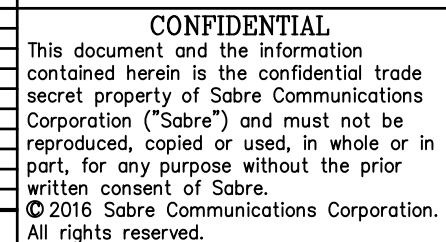


Patent Pending

UNLESS OTHERWISE SPECIFIED
ALL DIMENSIONS INCLUDE
FINISHES AND ARE IN INCHES

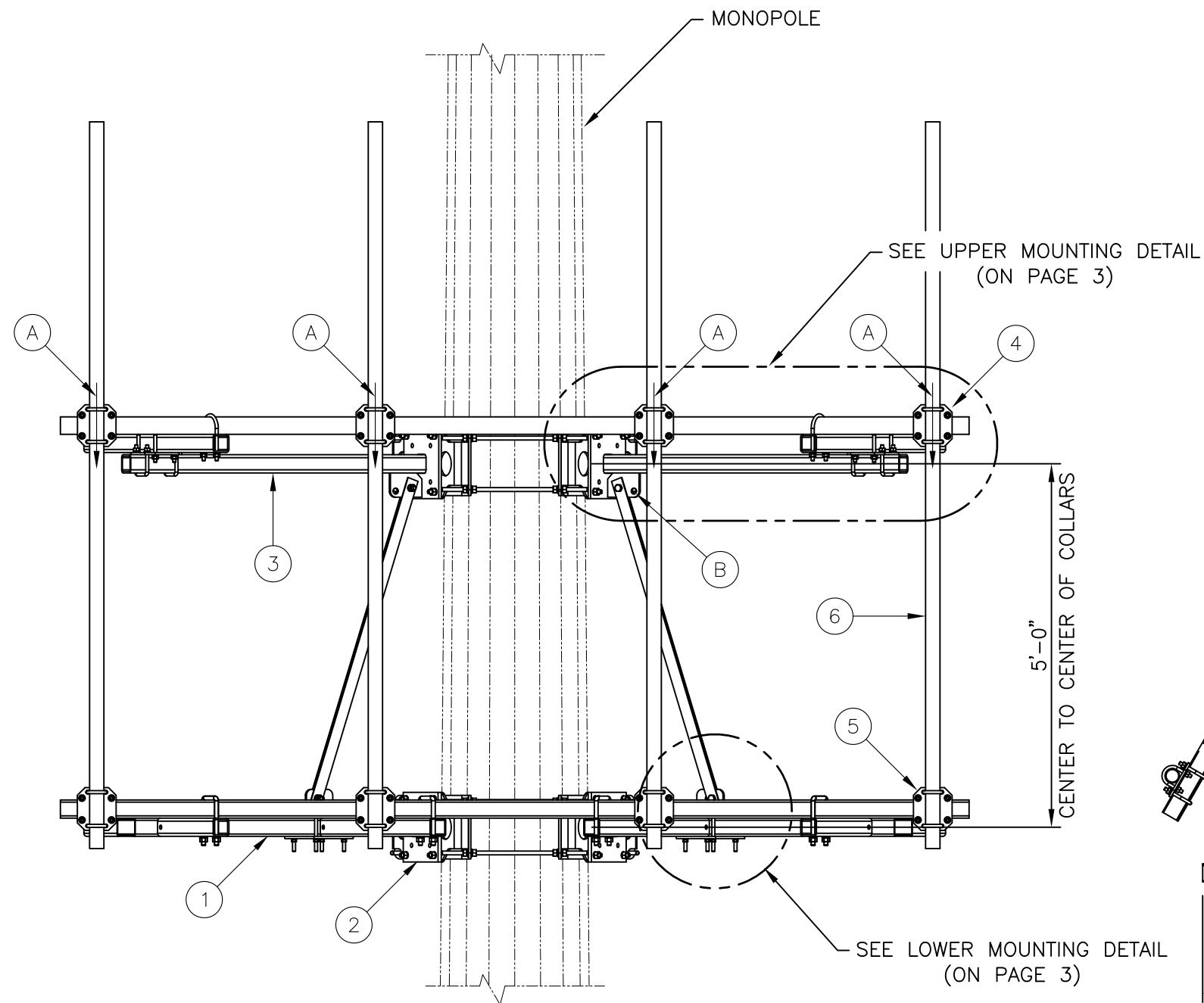
TOLERANCES: FRACTIONS $\pm 1/16"$
ANGLES $\pm 1/2$ DEG.
DECIMALS $\pm .010"$

TOLERANCES DO NOT APPLY
TO RAW MATERIAL

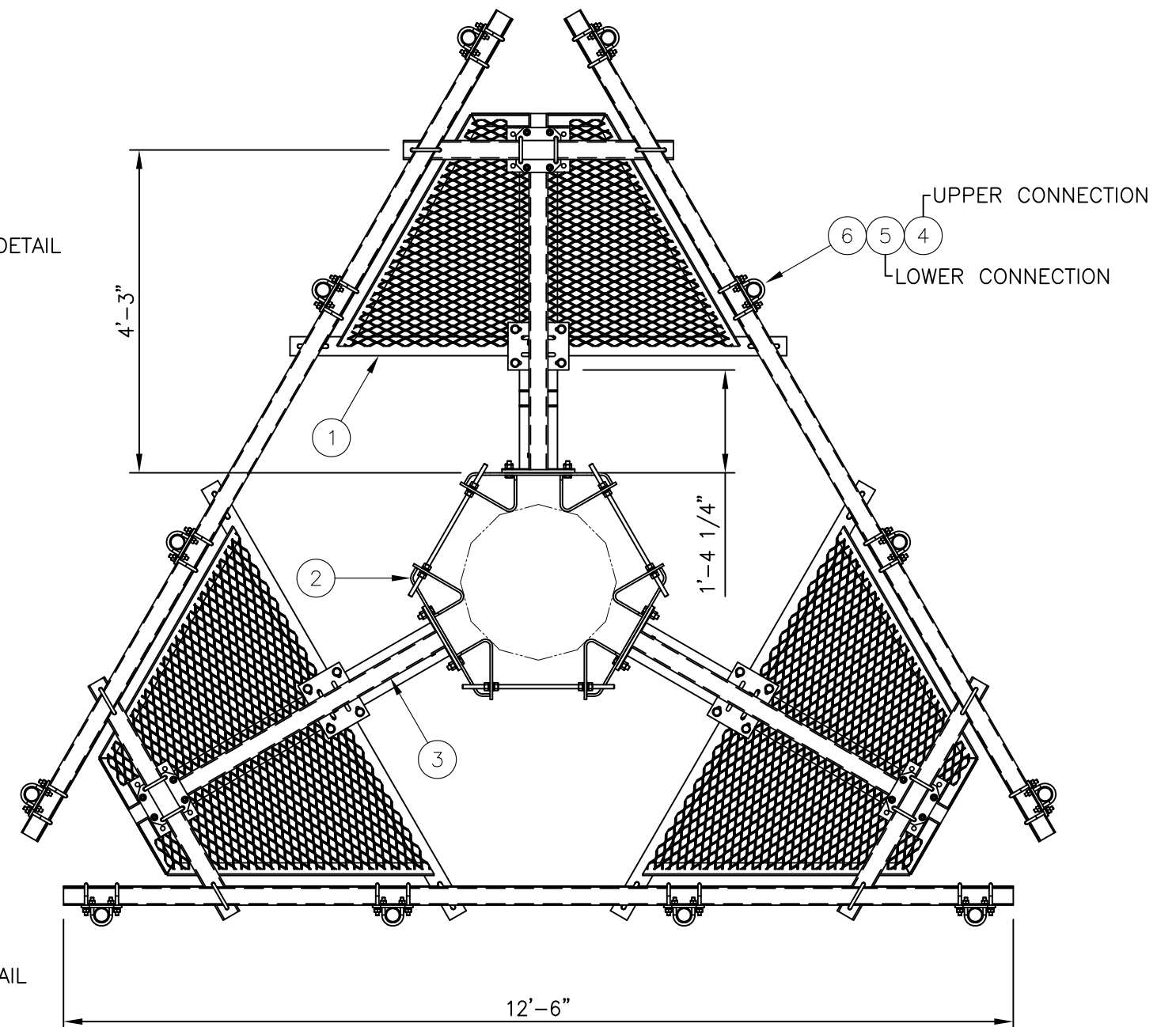


	12' HC M.O.V.E. PLATFORM
W/(12)	2 3/8" O.D. X 10' MOUNTING PIPES

		SIZE	DRAWING NO.		REV
DATE	10/18/17	B	C10855711C		0
DRAWN BY	WRF			SCALE	PAGE
CHECKED BY	WMN			None	1 OF 3




ELEVATION VIEW

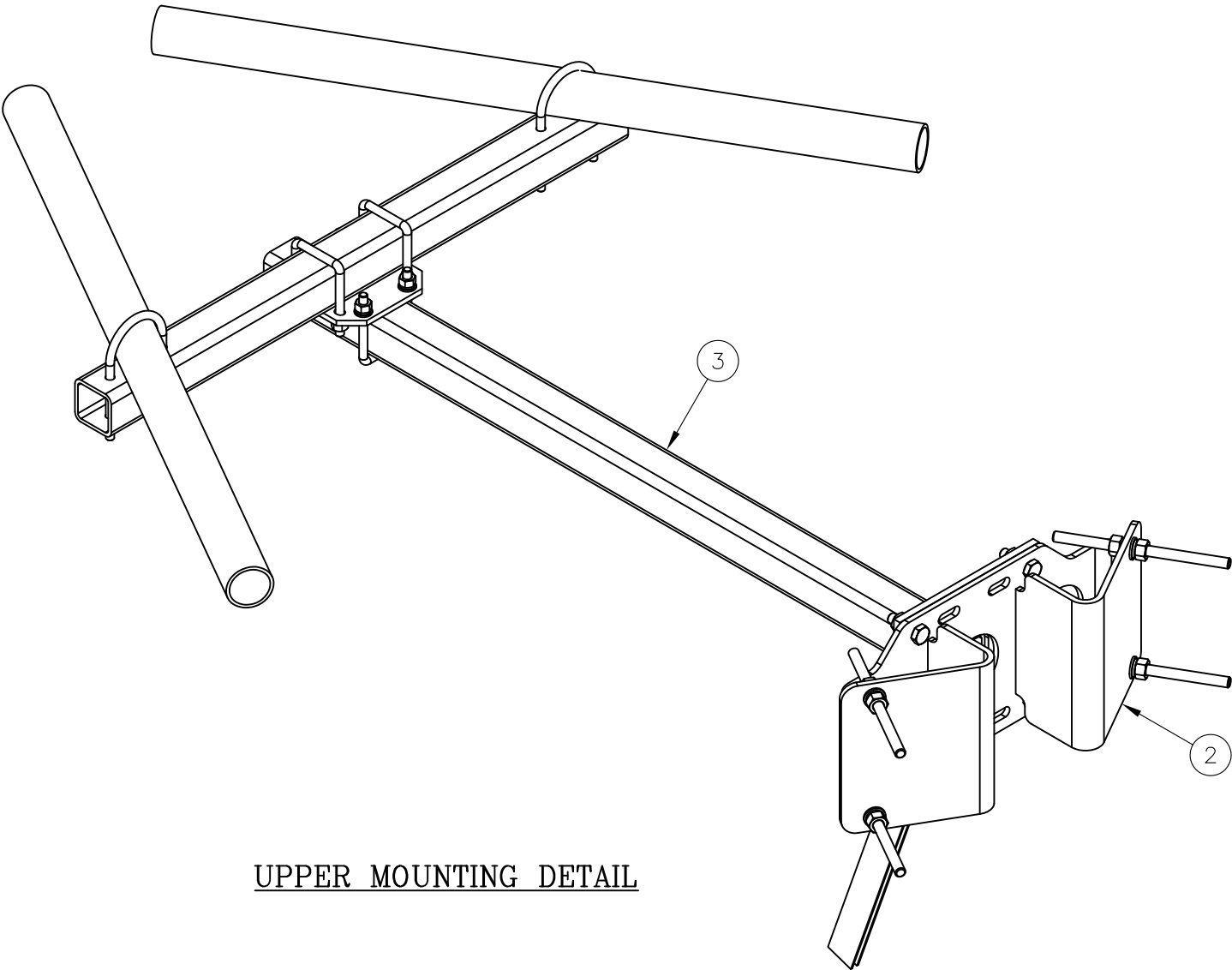


PLAN VIEW

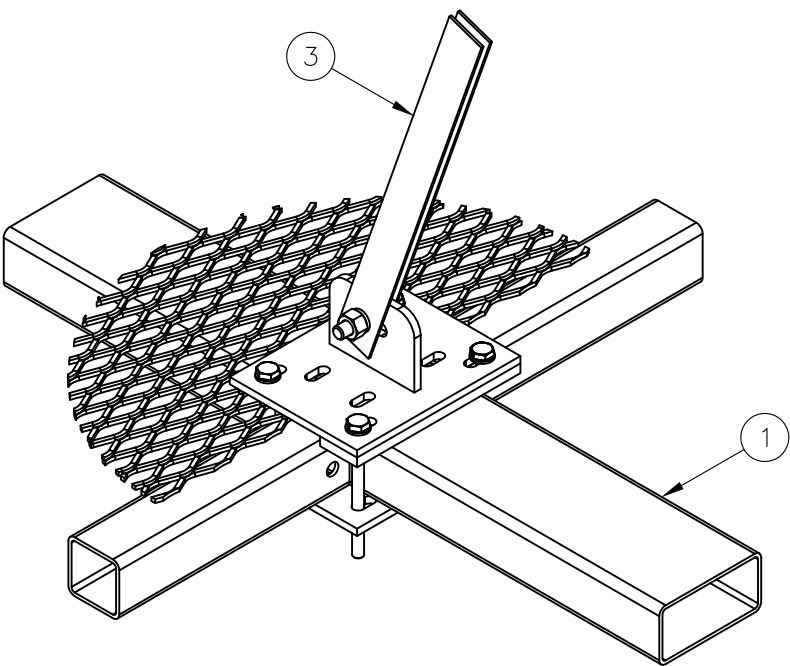
NOTES:

1. SABRE INDUSTRIES RECOMMENDS A FALL PROTECTION PLAN BE COMPLETED AND FOLLOWED BY A COMPETENT PERSON FOR EACH CLIMB.
2. ANY CONSTRUCTION OR MAINTENANCE MUST BE PERFORMED IN ACCORDANCE WITH THE REQUIREMENTS OF ANSI/TIA-222, ANSI/TIA-322 AND ANSI/TIA-1019A.
3. LOCATIONS LABELED "A" HAVE BEEN DESIGNED FOR A 500 LB. VERTICAL LIVE LOAD CONSIDERED WITH A 30 MPH 3-SECOND GUST WIND SPEED. THIS LOAD CAN ONLY BE APPLIED AT ONE LOCATION AT A TIME. ARROW SHOWN REPRESENTS THE VERTICAL LOAD. CONNECTION AND RIGGING TO BE DETERMINED BY A COMPETENT RIGGER IN ACCORDANCE WITH ANSI/TIA-1019A.
4. LOCATIONS LABELED "B" HAVE BEEN DESIGNED FOR A 3600 LB. VERTICAL FACTORED LOAD IN ACCORDANCE WITH TIA-222 SECTION 12.

UNLESS OTHERWISE SPECIFIED ALL DIMENSIONS INCLUDE FINISHES AND ARE IN INCHES				MATERIAL:				12' HC M.O.V.E. PLATFORM W/(12) 2 3/8" O.D. X 10' MOUNTING PIPES						
TOLERANCES: FRACTIONS ± 1/16" ANGLES ± 1/2 DEG. DECIMALS ± .010"				TOLERANCES DO NOT APPLY TO RAW MATERIAL										
						CONFIDENTIAL This document and the information contained herein is the confidential trade secret property of Sabre Communications Corporation ("Sabre") and must not be reproduced, copied or used, in whole or in part, for any purpose without the prior written consent of Sabre. © 2016 Sabre Communications Corporation. All rights reserved.				SIZE	DRAWING NO.		REV	
								DATE	10/18/17	B	C10855711C		0	
								DRAWN BY		WRF				
								CHECKED BY		WMN				
												SCALE	PAGE	
												None	2 OF 3	
REV	DATE	DRW	CHK	DESCRIPTION										




UPPER MOUNTING DETAIL



LOWER MOUNTING DETAIL

Distributed By
Rosenberger
Rosenberger Site Solutions, LLC
visit www.RosenbergerOnline.us

UNLESS OTHERWISE SPECIFIED ALL DIMENSIONS INCLUDE FINISHES AND ARE IN INCHES				MATERIAL:			12' HC M.O.V.E. PLATFORM W/(12) 2 3/8" O.D. X 10' MOUNTING PIPES									
TOLERANCES: FRACTIONS ± 1/16" ANGLES ± 1/2 DEG. DECIMALS ± .010"				TOLERANCES DO NOT APPLY TO RAW MATERIAL												
						<div>CONFIDENTIAL</div> <div>This document and the information contained herein is the confidential trade secret property of Sabre Communications Corporation ("Sabre") and must not be reproduced, copied or used, in whole or in part, for any purpose without the prior written consent of Sabre.</div> <div>© 2016 Sabre Communications Corporation. All rights reserved.</div>					SIZE		DRAWING NO.		REV	
							DATE		10/18/17		B		C10855711C		0	
							DRAWN BY		WRF				SCALE		PAGE	
							CHECKED BY		WMN				None		3 OF 3	
REV	DATE	DRW	CHK	DESCRIPTION												