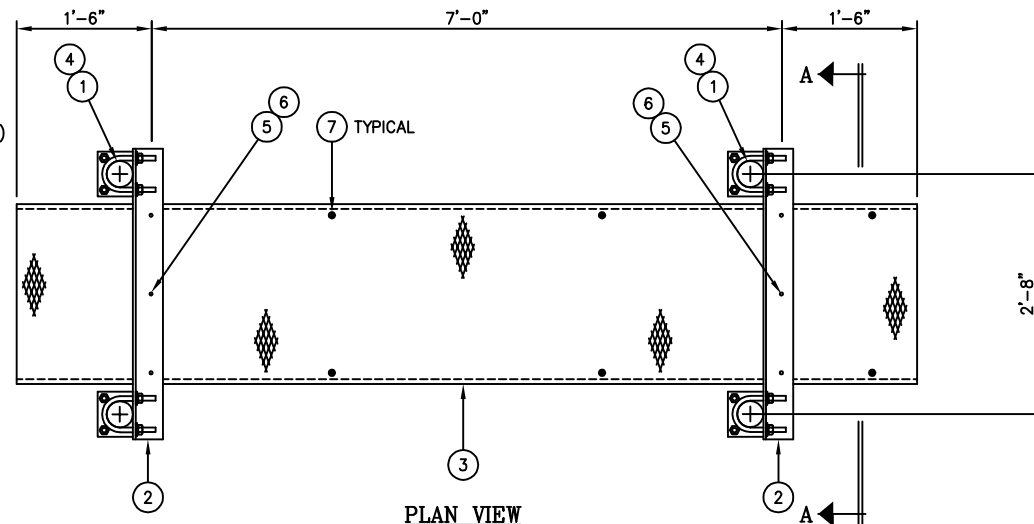


SECTION A-A



PLAN VIEW

NOTE:

THIS WAVEGUIDE BRIDGE ASSEMBLY IS NOT DESIGNED TO SUPPORT PERSONNEL OR EQUIPMENT.

C20136024 GRIP STRUT WAVEGUIDE BRIDGE KIT

| ITEM | QTY. | PART. NO. | DESCRIPTION | WEIGHT |
|--------------|------|-----------|--|--------|
| 1. | 4 | C20139003 | WAVEGUIDE BRIDGE POST W/PIPE CAP & ANCHORS | 357.6# |
| 2. | 2 | CS00053 | WAVEGUIDE BRIDGE SUPPORT ANGLE | 82.6# |
| 3. | 1 | C20137002 | GRIP STRUT WAVEGUIDE BRIDGE, 24" X 10'-0 | 74.0# |
| 4. | 8 | C40034028 | U-BOLT ASSEMBLY, 5/8" X 4 3/16" C/C | 15.4# |
| 5. | 6 | C40012017 | STAINLESS STEEL BOLT ASSY, 3/8 X 2 | 0.6# |
| 6. | 12 | C40046001 | FENDER WASHER, 7/16 I.D. X 1 1/2 O.D. | 0.6# |
| 7. | 3 | C20145002 | SINGLE LEVEL TRAPEZE KIT | 15.3# |
| TOTAL WEIGHT | | | | 546.1# |

UNLESS OTHERWISE SPECIFIED
ALL DIMENSIONS INCLUDE
FINISHES AND ARE IN INCHES

TOLERANCES: FRACTIONS $\pm 1/16"$
ANGLES $\pm 1/2$ DEG.
DECIMALS $\pm .010"$

MATERIAL:

TOLERANCES DO NOT APPLY
TO RAW MATERIAL



CONFIDENTIAL

This document and the information contained herein is the confidential trade secret property of Sabre Communications Corporation ("Sabre") and must not be reproduced, copied or used, in whole or in part, for any purpose without the prior written consent of Sabre.

© 2006 Sabre Communications Corporation. All rights reserved.

**GRIP STRUT WAVEGUIDE BRIDGE
WITH 10'-6" BASE PLATE COLUMNS
(24" WIDE X 10'-0")
SINGLE LEVEL TRAPEZE**

| REV | DATE | DRW/CHK | DESCRIPTION |
|-----|------|---------|-------------|
| | | | |
| | | | |
| | | | |
| | | | |
| | | | |
| | | | |
| | | | |
| | | | |
| | | | |
| | | | |
| | | | |

| DATE | 6/10/03 | SIZE | B | DRAWING NO. | C20136024 | REV | 0 |
|------------|---------|------|---|-------------|-----------|------|--------|
| DRAWN BY | KLE | | | SCALE | None | PAGE | 1 OF 1 |
| CHECKED BY | PSB | | | | | | |