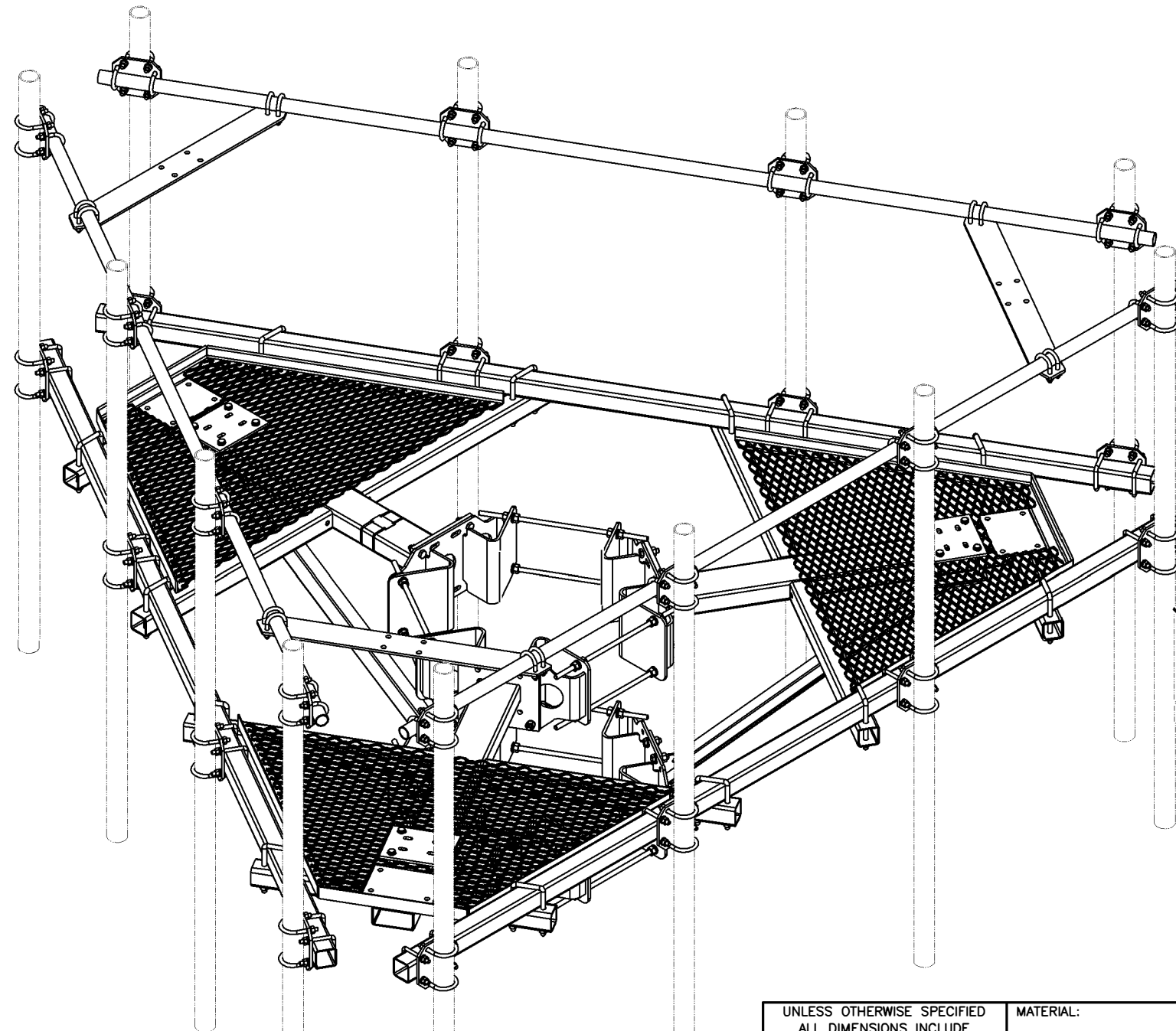




C10855557C 12' HD PLATFORM W/COLLARS, CROSSOVERS & SUPPORT RAIL

ITEM	QTY.	PART NO.	DESCRIPTION	WEIGHT
1.	2	C10112377	TRI-COLLAR BRACKET ASSEMBLY (10"-40" MONOPOLE)	416
2.	3	CW01320	WELDMENT, PLATFORM CORNER	612
3.	3	CS03348	SQUARE TUBE, 3 X 3 X 3/16 X 12'-6	268
4.	3	CS03354	PLATE, UPPER CONNECTION	22
5.	3	CW01322	WELDMENT, KICKER SUPPORT	31
6.	3	CW01291	WELDMENT, KICKER SUPPORT	32
7.	6	CS03372	ANGLE, KICKER	82
8.	3	CS03349	PLATE, CONNECTION 3/8 X 4 3/8 X 3'-6 1/16	56
9.	3	CS02229	PIPE, 1.9 O.D. X .145 X 12'-6	106
10.	12	CS03351	CROSSOVER PLATE	58
11.	12	CS03336	CROSSOVER PLATE	48
12.	18	C40026024	BOLT ASSEMBLY, 5/8 Ø X 2 1/4 A325	9
13.	12	C40026023	BOLT ASSEMBLY, 5/8 Ø X 2 A325	6
14.	12	C40024106	BOLT ASSEMBLY, 1/2 Ø X 6 1/2 GR5 FULL THD	5
15.	12	C40031003	FLATWASHER, 5/8 Ø HARDENED ASTM F436	1
16.	24	C40031002	FLATWASHER, 1/2 Ø HARDENED ASTM F436	1
17.	12	C40035017	SQ. U-BOLT ASSEMBLY, 5/8 Ø X 4 1/4 C-C	25
18.	36	C40034060	U-BOLT ASSEMBLY, 1/2 Ø X 2 9/16 C-C	26
19.	24	C40035106	SQ. U-BOLT ASSEMBLY, 1/2 Ø X 3 5/8 C-C	23
20.	48	C40034140	U-BOLT ASSEMBLY, 1/2 Ø X 3 7/16 C-C	43
21.	1	Z30992015	MOUNT CLASSIFICATION TAG C10855555C	1
22.	2	C40062104	STAINLESS STEEL SELF-LOCKING CABLE TIE	1
TOTAL WEIGHT				1872

2 7/8"Ø MOUNTING PIPES
MUST BE PURCHASED SEPARATELY



ISOMETRIC VIEW

SEE PAGES 2 & 3 FOR ADDITIONAL DETAILS

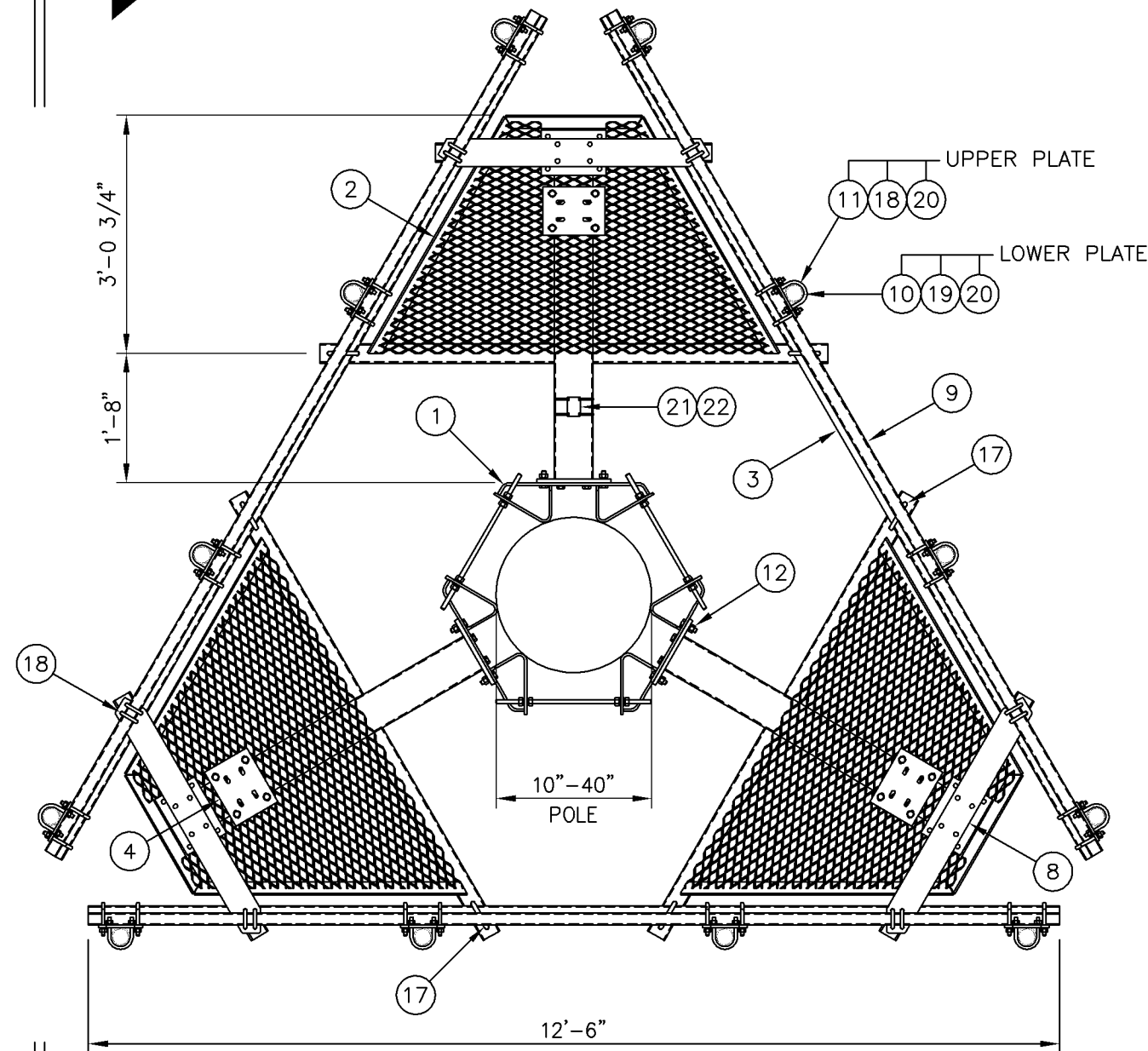
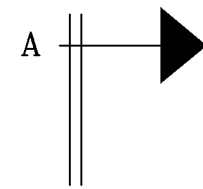
UNLESS OTHERWISE SPECIFIED ALL DIMENSIONS INCLUDE FINISHES AND ARE IN INCHES		MATERIAL:	
TOLERANCES: FRACTIONS ± 1/16" ANGLES ± 1/2 DEG. DECIMALS ± .010"		TOLERANCES DO NOT APPLY TO RAW MATERIAL	
REV	DATE	DRW	CHK
1	04/18/16	WRF	KLE
DESIGN UPDATE			

CONFIDENTIAL

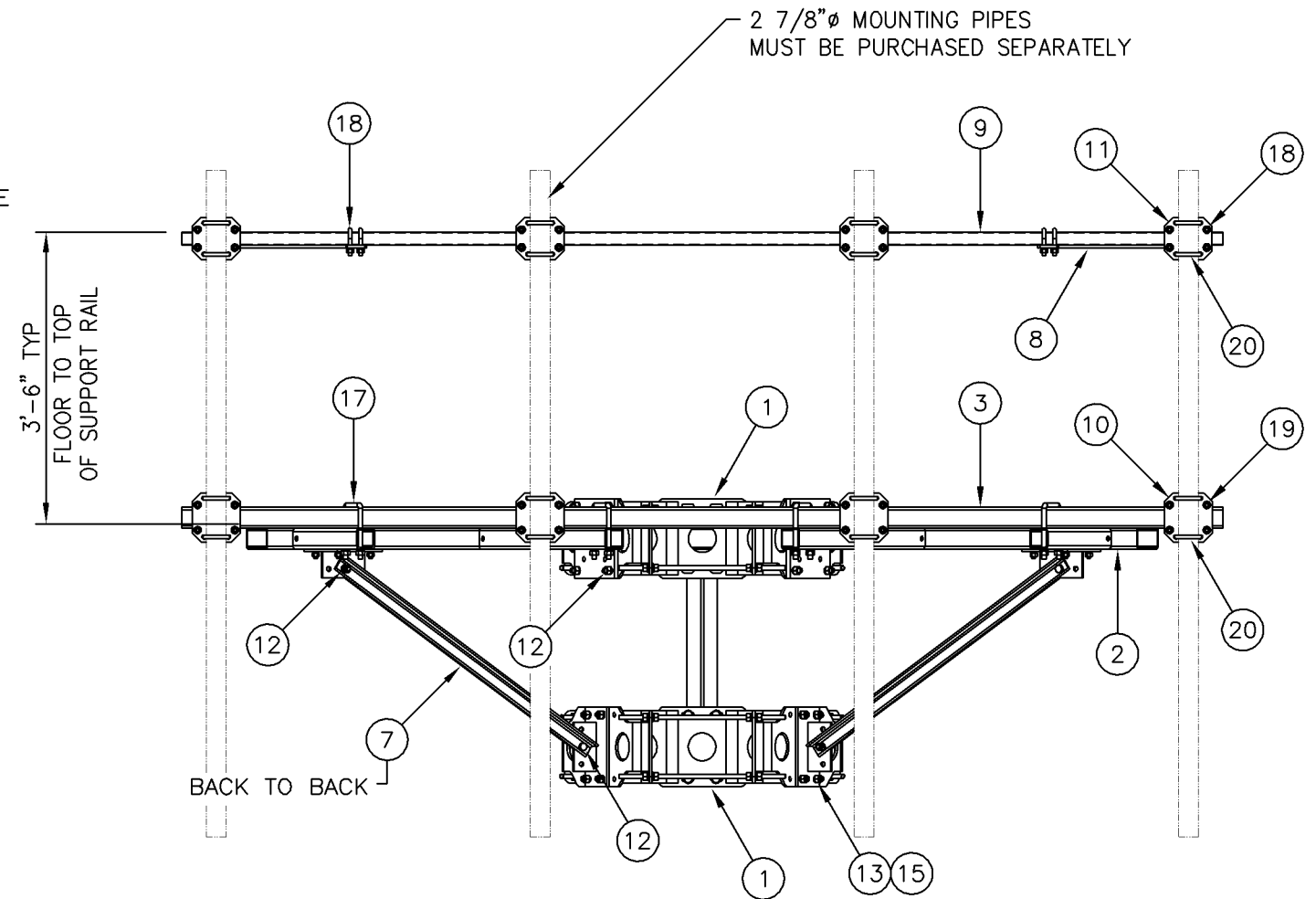
This document and the information contained herein is the confidential trade secret property of Sabre Communications Corporation ("Sabre") and must not be reproduced, copied or used, in whole or in part, for any purpose without the prior written consent of Sabre.

© 2016 Sabre Communications Corporation. All rights reserved.


12' HD PLATFORM WITH COLLARS & SUPPORT RAIL 1.9"Ø - 2 7/8"Ø CROSSOVERS 2 7/8"Ø - 3" SQUARE CROSSOVERS FITS 10"Ø TO 40"Ø MONOPOLES			
DATE		02/16/16	SIZE
DRAWN BY		WRF	B
CHECKED BY		KLE	DRAWING NO.
			C10855557C
		SCALE	PAGE
		None	1 OF 3
			REV
			1



PLAN VIEW



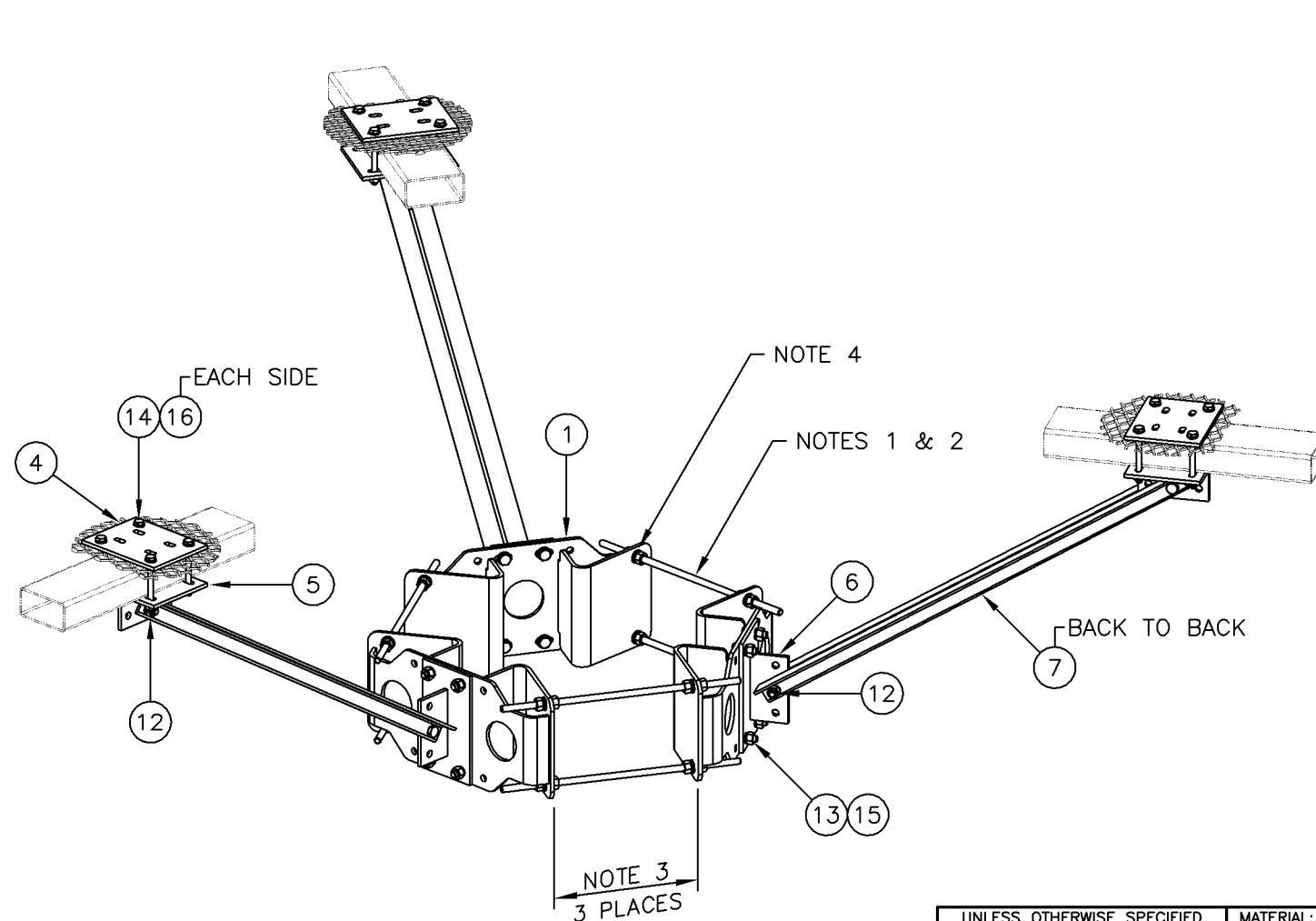
FRONT VIEW

UNLESS OTHERWISE SPECIFIED ALL DIMENSIONS INCLUDE FINISHES AND ARE IN INCHES				MATERIAL:				12' HD PLATFORM WITH COLLARS & SUPPORT RAIL 1.9"Ø – 2 7/8"Ø CROSSOVERS 2 7/8"Ø – 3" SQUARE CROSSOVERS FITS 10"Ø TO 40"Ø MONOPOLES					
TOLERANCES: FRACTIONS ± 1/16" ANGLES ± 1/2 DEG. DECIMALS ± .010"				TOLERANCES DO NOT APPLY TO RAW MATERIAL									
						CONFIDENTIAL This document and the information contained herein is the confidential trade secret property of Sabre Communications Corporation ("Sabre") and must not be reproduced, copied or used, in whole or in part, for any purpose without the prior written consent of Sabre. © 2016 Sabre Communications Corporation. All rights reserved.				SIZE	DRAWING NO.		REV
								DATE	02/16/16	B	C10855557C	1	
								DRAWN BY	WRF				
								CHECKED BY	KLE			SCALE	PAGE
												None	2 OF 3
1	04/18/16	WRF	KLE	DESIGN UPDATE									
REV	DATE	DRW	CHK	DESCRIPTION									

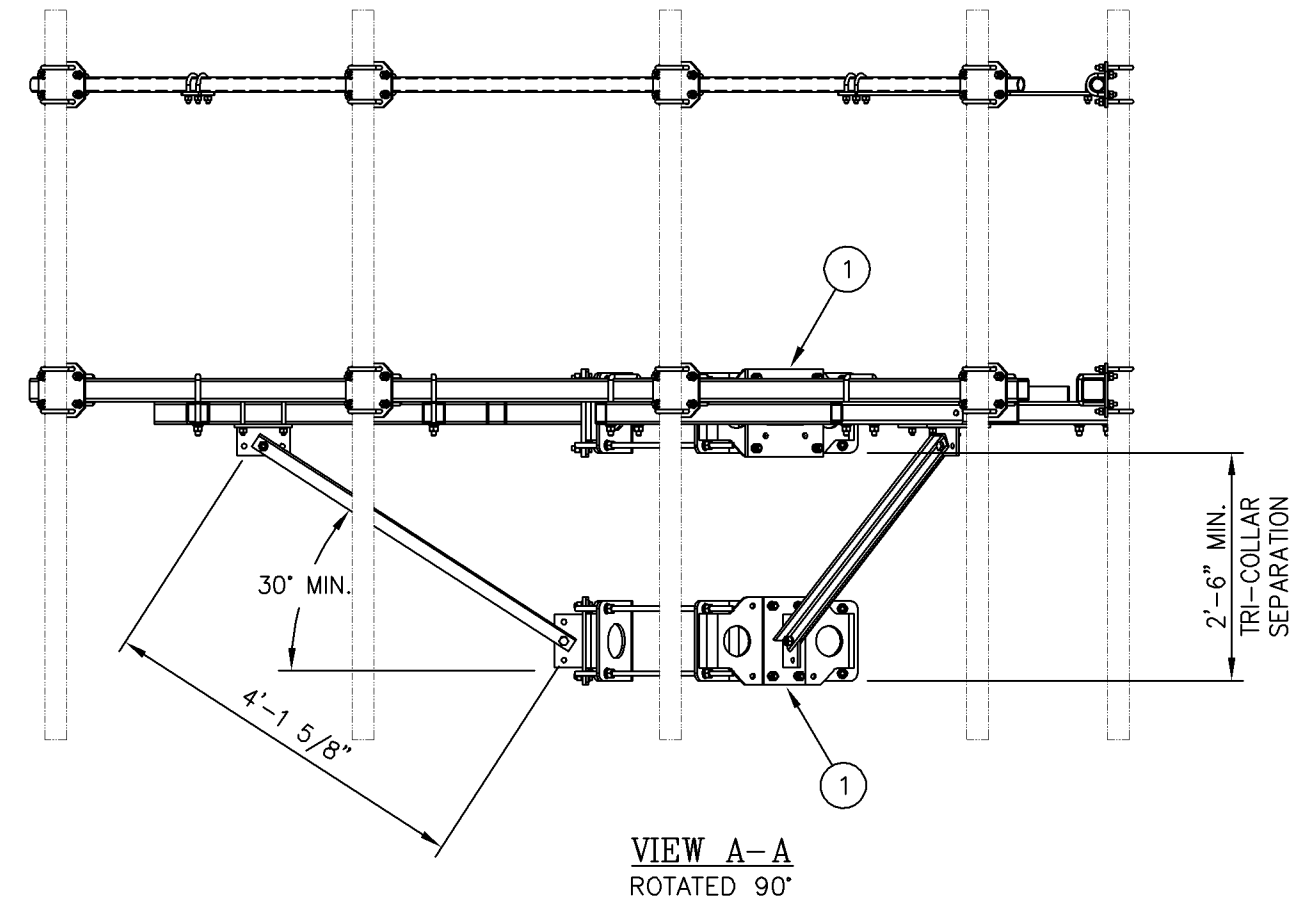



TRI-COLLAR NOTES:

1. THERE ARE (2) LENGTHS OF THREADED ROD SUPPLIED TO ACCOMMODATE DIAMETERS LISTED BELOW
USE 5/8 X 1'-6" THREADED ROD ASSEMBLY FOR 10"-24" MONOPOLE DIAMETERS
USE 5/8 X 2'-9" THREADED ROD ASSEMBLY FOR 24"-40" MONOPOLE DIAMETERS (SEE NOTE 2)
2. THREADED ROD MAY BE SHORTENED IF REQUIRED, FIELD CUT AND COLD GALV SPRAY TO SUIT.
3. THIS DISTANCE MUST BE EQUAL IN ALL (3) THREE LOCATIONS TO ENSURE THE STRUCTURAL INTEGRITY OF THE THREADED RODS AS WELL AS 120° SEPARATION.
4. FOR MONOPOLES 13" DIA. OR SMALLER, ONLY (1) ONE NUT AND (1) ONE LOCKWASHER ARE REQUIRED BETWEEN THE TRI-COLLAR BRACKETS.
FOR MONOPOLES LARGER THAN 13" DIA., (2) TWO NUTS AND (2) TWO LOCKWASHERS ARE REQUIRED BETWEEN THE TRI-COLLAR BRACKETS.



TRI-COLLAR & PLATFORM REINFORCEMENT DETAIL



UNLESS OTHERWISE SPECIFIED ALL DIMENSIONS INCLUDE FINISHES AND ARE IN INCHES				MATERIAL:		 Sabre Industries™ Towers and Poles	12' HD PLATFORM WITH COLLARS & SUPPORT RAIL 1.9"Ø – 2 7/8"Ø CROSSOVERS 2 7/8"Ø – 3" SQUARE CROSSOVERS FITS 10"Ø TO 40"Ø MONOPOLES					
TOLERANCES: FRACTIONS ± 1/16" ANGLES ± 1/2 DEG. DECIMALS ± .010"				TOLERANCES DO NOT APPLY TO RAW MATERIAL								
						CONFIDENTIAL This document and the information contained herein is the confidential trade secret property of Sabre Communications Corporation ("Sabre") and must not be reproduced, copied or used, in whole or in part, for any purpose without the prior written consent of Sabre. © 2016 Sabre Communications Corporation. All rights reserved.			SIZE	DRAWING NO.		REV
							DATE	02/16/16	B	C10855557C		1
							DRAWN BY		WRF			
							CHECKED BY		KLE			
											SCALE	PAGE
											None	3 OF 3
1	04/18/16	WRF	KLE	DESIGN UPDATE								
REV	DATE	DRW	CHK	DESCRIPTION								