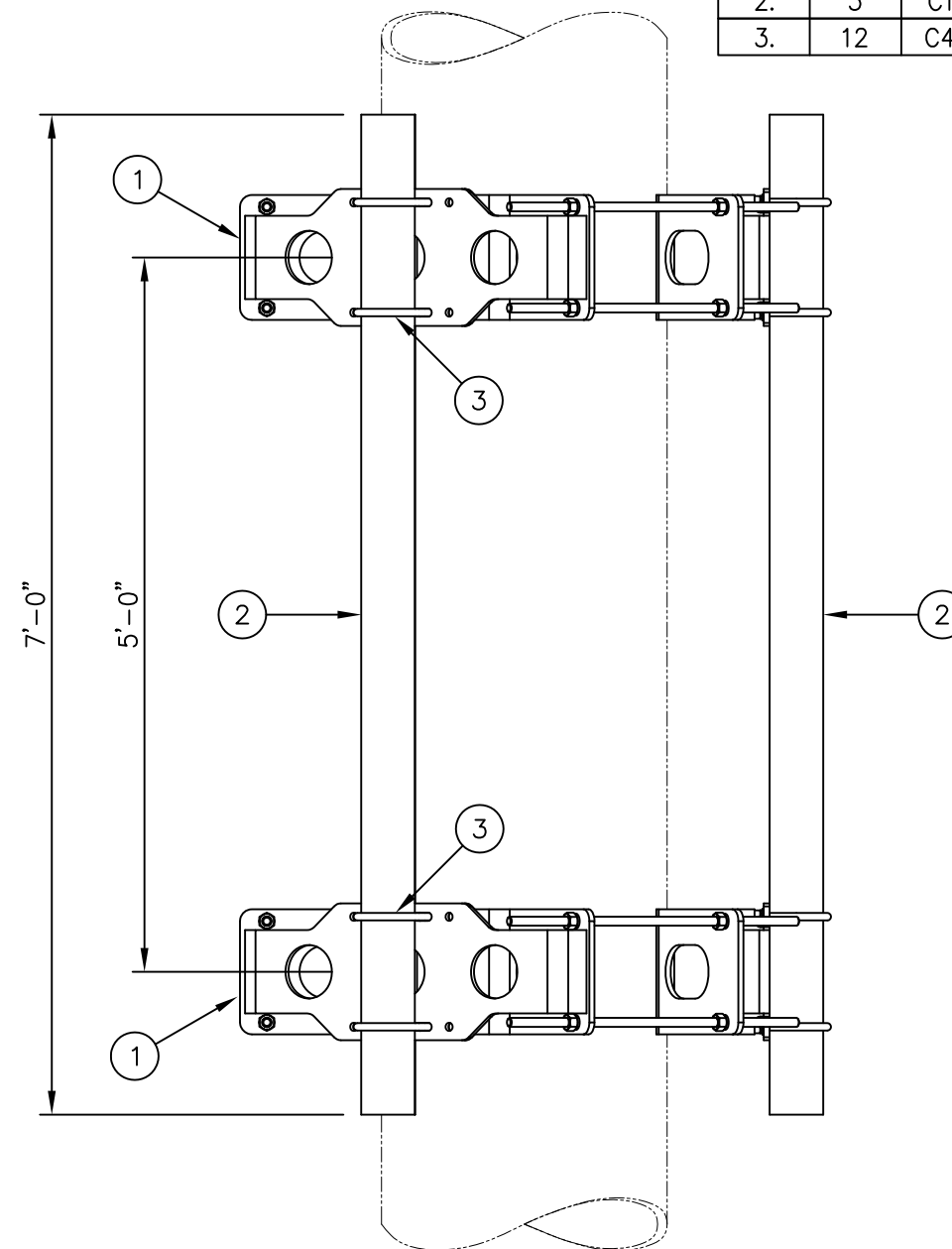




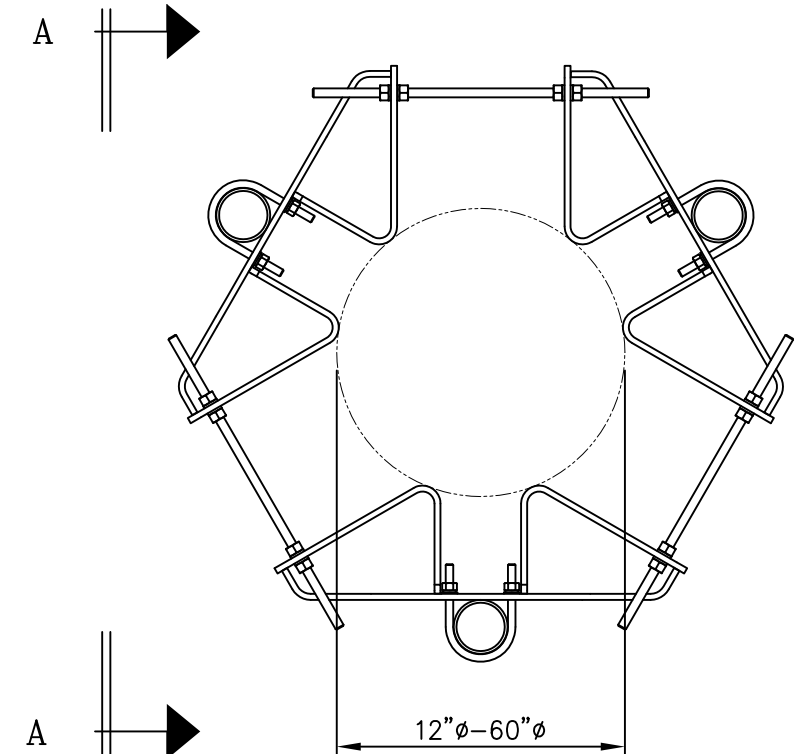
This diagram illustrates an exploded view of a mechanical assembly. It features two vertical shafts, one on the left and one on the right. Each shaft is equipped with a series of brackets or supports that are designed to hold a central component in place. The brackets are connected to the shafts via pins or bolts. The central component, which is the focus of the assembly, is shown in a position that allows it to be easily aligned and secured between the two shafts. The diagram uses a clean, technical line-drawing style to clearly show the components and their relative positions.

Distributed By
Rosenberger
 Rosenberger Site Solutions, LLC
 visit www.RosenbergerOnline.us

C10899055 4 1/2" O.D. PIPE MOUNT ASSEMBLY				
ITEM	QTY.	PART NO.	DESCRIPTION	WEIGHT
1.	2	C10112301	TRI-COLLAR BRACKET ASSEMBLY	660
2.	3	C10901407	PIPE, 4 1/2 O.D. X .237 X 7'-0	236
3.	12	C40034032	U-BOLT ASSEMBLY, 5/8 ø X 5 3/16 C-C	26
			TOTAL WEIGHT	922



VIEW A-A



PLAN VIEW

UNLESS OTHERWISE SPECIFIED
ALL DIMENSIONS INCLUDE
FINISHES AND ARE IN INCHES

TOLERANCES: FRACTIONS $\pm 1/16"$
ANGLES $\pm 1/2$ DEG.
DECIMALS $\pm .010"$

MATERIAL:

TOLERANCES DO NOT APPLY
TO RAW MATERIAL



CONFIDENTIAL

This document and the information contained herein is the confidential trade secret property of Sabre Communications Corporation ("Sabre") and must not be reproduced, copied or used, in whole or in part, for any purpose without the prior written consent of Sabre.
© 2016 Sabre Communications Corporation.
All rights reserved.

4 1/2" O.D. PIPE MOUNT ASSEMBLY
FOR MONOPOLES
(FITS 12" TO 60" DIAMETER)

		SIZE	DRAWING NO.		REV
DATE	01/26/16	B	C10899055		0
DRAWN BY	WRF			SCALE	PAGE
CHECKED BY	DLW			None	1 OF 1