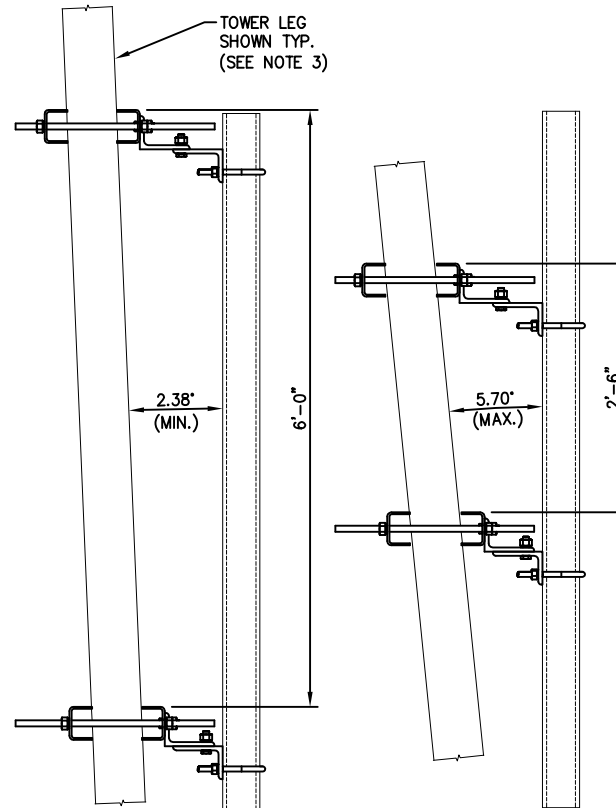


ISOMETRIC VIEW
(STRAIGHT TOWER LEG CONFIGURATION SHOWN)



TAPERED TOWER LEG OPTIONS
VARIOUS TOWER LEG TAPERS CAN BE ACCOMMODATED BY SPREADING THE MOUNTS OUT FROM 2'-6" TO 6'-0".

C10172102 ANTENNA PIPE MOUNTING KIT

ITEM	QTY.	PART NO.	DESCRIPTION	WEIGHT
1.	2	CS01427	ANGLE, PIPE MOUNT	25#
2.	2	CS01428	ANGLE, PIPE MOUNT	25#
3.	4	CS01360	PLATE, MOUNTING BRACKET (FORMED CHANNEL)	35#
4.	4	C40026043	BOLT ASSEMBLY, 3/4 X 2 A325	3#
5.	4	C40026045	BOLT ASSEMBLY, 3/4 X 2 1/2 A325	3#
6.	4	C40094104	THREADED ROD ASSEMBLY, 3/4 Ø X 24 A36	12#
TOTAL WEIGHT				103#

NOTES:

- QUANTITIES SHOWN IN THE LIST OF MATERIAL ARE FOR ONE ANTENNA PIPE MOUNTING KIT ONLY.
- THE ANTENNA MOUNTING PIPE KIT MUST BE PURCHASED SEPARATELY. THIS MOUNT WILL ACCEPT A 2 3/8"Ø TO 4 1/2"Ø MOUNTING PIPE.
- THIS ANTENNA PIPE MOUNTING KIT WILL MOUNT TO THE FOLLOWING TOWER LEG SIZES:
 - 5 3/4"Ø TO 10 3/4"Ø ROUND LEG
 - L 5 X 5 TO L 8 X 8 ANGLE LEG

Distributed By
Rosenberger
 Rosenberger Site Solutions, LLC
 Call 1.866.598.5250 or visit www.RLSS.us

UNLESS OTHERWISE SPECIFIED ALL DIMENSIONS INCLUDE FINISHES AND ARE IN INCHES		MATERIAL:	
TOLERANCES: FRACTIONS ± 1/16" ANGLES ± 1/2 DEG. DECIMALS ± .010"		TOLERANCES DO NOT APPLY TO RAW MATERIAL	
1	2/21/07	MLC/MLC	REVISED WEIGHT ON ITEMS 1 & 2
REV	DATE	DRW/CHK	DESCRIPTION



CONFIDENTIAL
Information contained herein is the sole property of Sabre Communications Corporation, constitutes a trade secret as defined by Iowa Code Ch. 550 and shall not be reproduced, copied or used in whole or in part for any purpose whatsoever without prior written consent of Sabre Communications Corporation.

ANTENNA PIPE MOUNTING KIT
(5 3/4"Ø TO 10 3/4"Ø ROUND LEG)
(5" TO 8" ANGLE LEG)

DATE	2/15/07	SIZE	DRAWING NO.	REV
DRAWN BY	MLC	B	C10172102	1
CHECKED BY	MC		SCALE	PAGE
			None	1 OF 1