



Distributed By

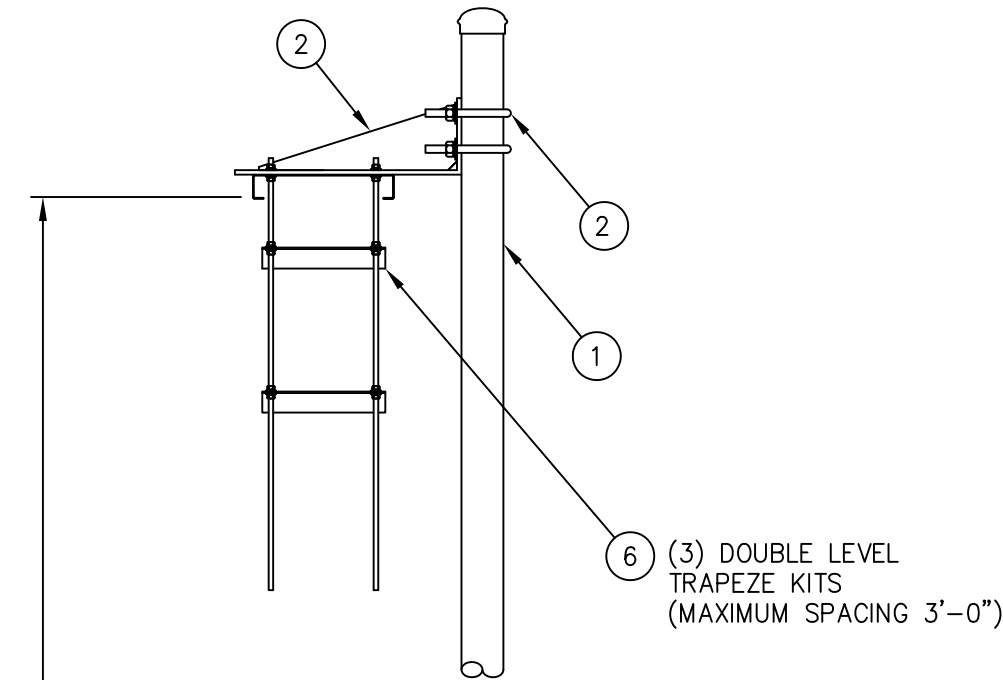
**Rosenberger**

Rosenberger Site Solutions, LLC

visit [www.RosenbergerOnline.us](http://www.RosenbergerOnline.us)

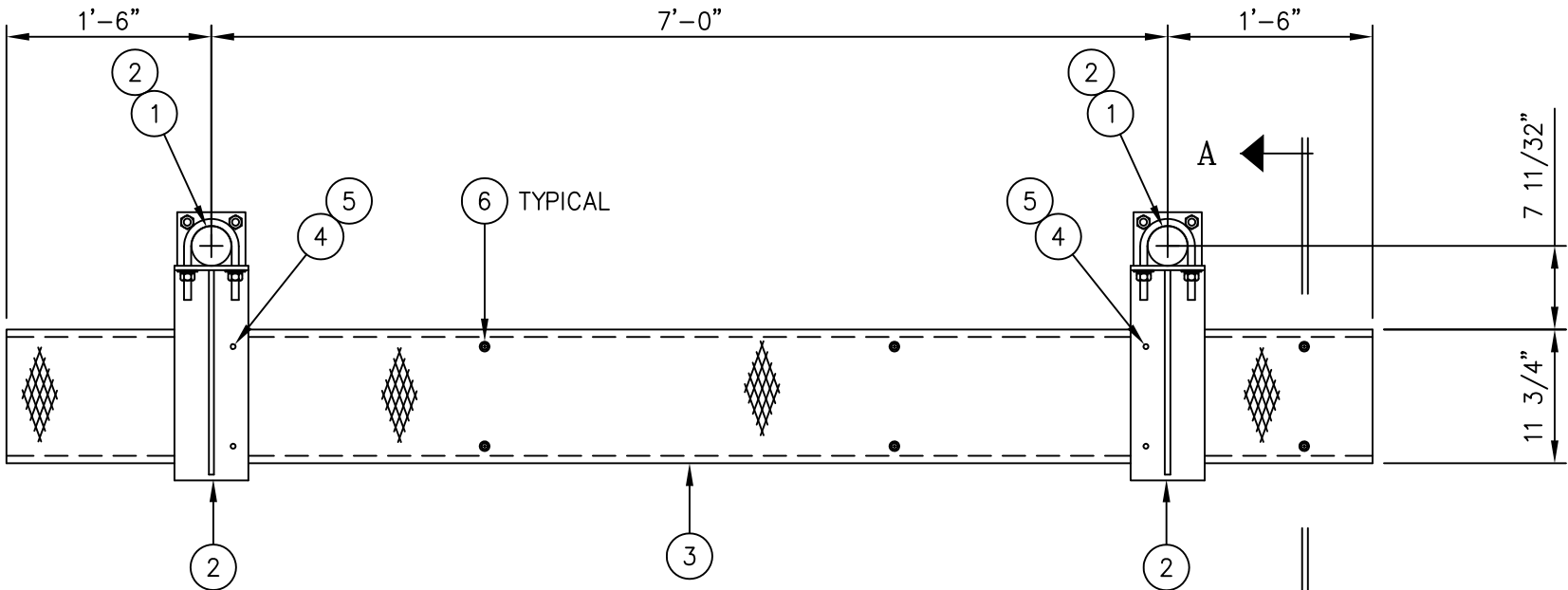
C20136065 GRIP STRUT WAVEGUIDE BRIDGE KIT

| ITEM         | QTY. | PART. NO. | DESCRIPTION                                  | WEIGHT |
|--------------|------|-----------|--|--------|
| 1.           | 2    | C20139005 | WAVEGUIDE BRIDGE POST W/PIPE CAP & ANCHORS   | 233.8# |
| 2.           | 2    | C20140010 | WAVEGUIDE BRIDGE SUPPORT ARM W/U-BOLTS       | 20.8#  |
| 3.           | 1    | C20137001 | GRIP STRUT WAVEGUIDE BRIDGE, 11 3/4" X 10'-0 | 44.0#  |
| 4.           | 4    | C40012017 | STAINLESS STEEL BOLT ASSY, 3/8 X 2           | 0.4#   |
| 5.           | 8    | C40046001 | FENDER WASHER, 7/16 I.D. X 1 1/2 O.D.        | 0.4#   |
| 6.           | 3    | C20145003 | DOUBLE LEVEL TRAPEZE KIT                     | 17.7#  |
| TOTAL WEIGHT |      |           |  | 317.1# |



13'-0" (MAX.)

(3) DOUBLE LEVEL  
TRAPEZE KITS  
(MAXIMUM SPACING 3'-0")



PLAN VEIW

A

NOTE:

THIS WAVEGUIDE BRIDGE ASSEMBLY IS NOT DESIGNED TO  
SUPPORT PERSONNEL OR EQUIPMENT.

1/2"Ø EXPANSION ANCHORS  
ARE SUPPLIED WITH KIT  
C20139005

SECTION A-A

UNLESS OTHERWISE SPECIFIED  
ALL DIMENSIONS INCLUDE  
FINISHES AND ARE IN INCHES  
  
TOLERANCES: FRACTIONS ± 1/16"  
ANGLES ± 1/2 DEG.  
DECIMALS ± .010"

MATERIAL:

TOLERANCES DO NOT APPLY  
TO RAW MATERIAL



CONFIDENTIAL

This document and the information  
contained herein is the confidential trade  
secret property of Sabre Communications  
Corporation ("Sabre") and must not be  
reproduced, copied or used, in whole or in  
part, for any purpose without the prior  
written consent of Sabre.  
© 2006 Sabre Communications Corporation.  
All rights reserved.

GRIP STRUT WAVEGUIDE BRIDGE  
WITH 14'-0" BASE PLATE COLUMNS  
(11 3/4" WIDE X 10'-0")  
DOUBLE LEVEL TRAPEZE

| REV | DATE | DRW | CHK | DESCRIPTION |
|-----|------|-----|-----|-------------|
|     |      |     |     |             |
|     |      |     |     |             |
|     |      |     |     |             |
|     |      |     |     |             |
|     |      |     |     |             |
|     |      |     |     |             |
|     |      |     |     |             |
|     |      |     |     |             |
|     |      |     |     |             |

|            |        | SIZE | DRAWING NO.   |                | REV |
|------------|--------|------|---------------|----------------|-----|
| DATE       | 6/6/03 | B    | C20136065     |                | 0   |
| DRAWN BY   | KLE    |      |               |                |     |
| CHECKED BY | PSB    |      |               |                |     |
|            |        |      | SCALE<br>None | PAGE<br>1 OF 1 |     |