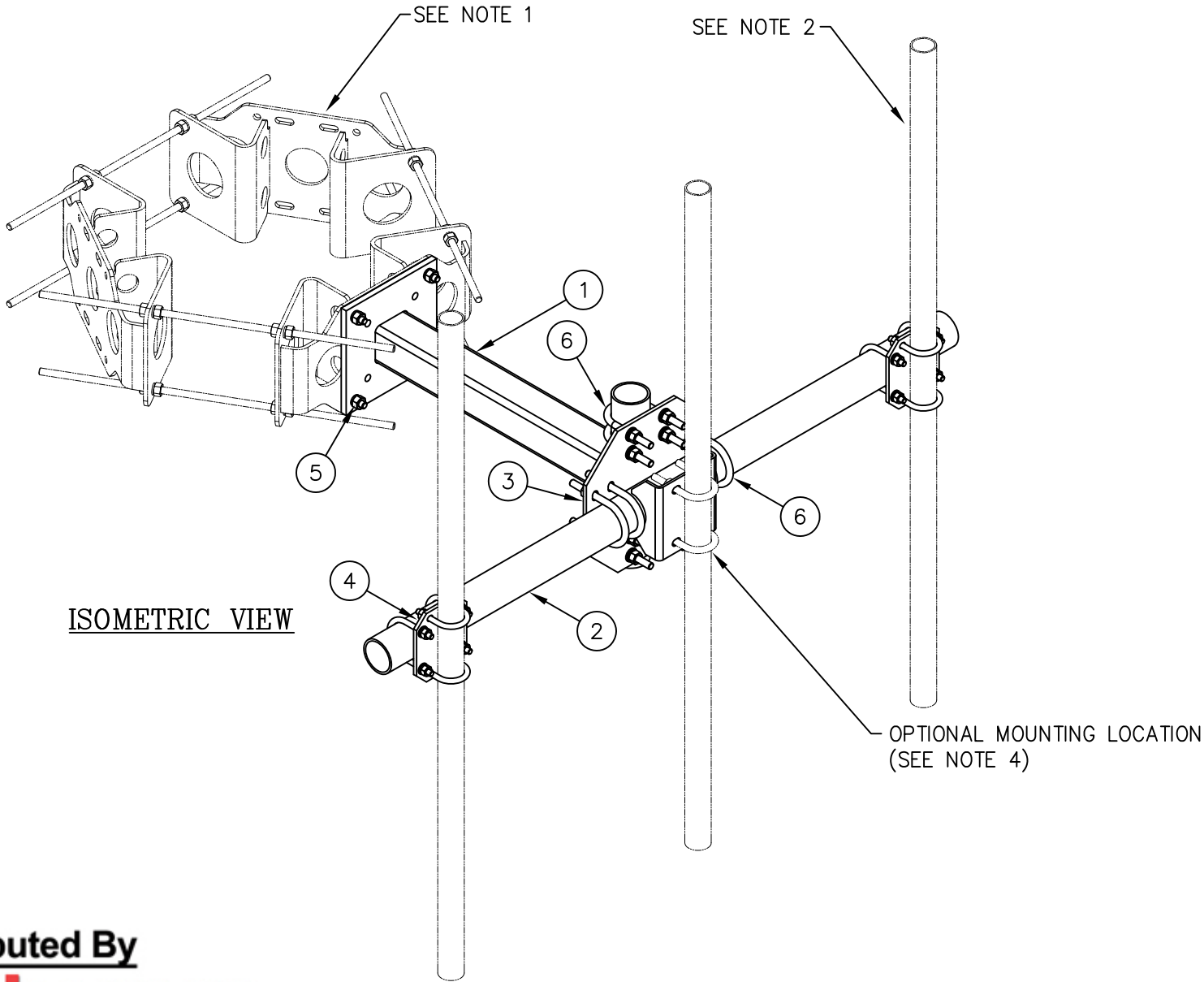


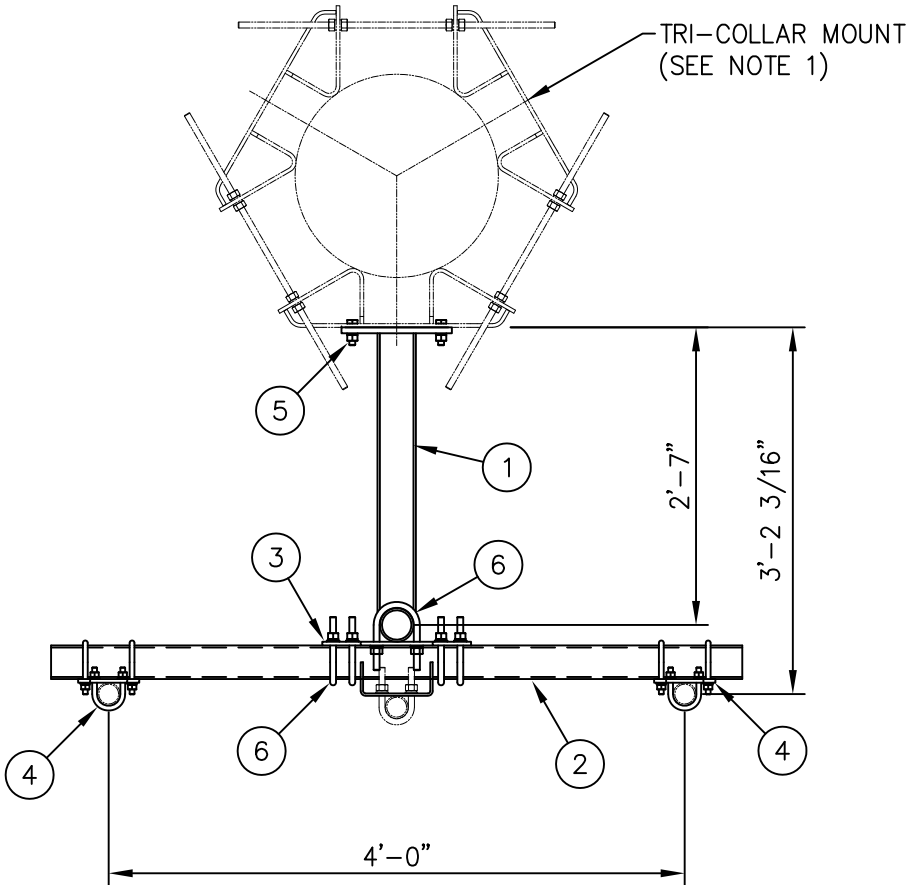


- \* EACH C10902013 CROSSOVER PLATE KIT CONSISTS OF . . .
- (1) CS03123 CROSSOVER PLATE
  - (2) C40034139 U-BOLT ASSEMBLY, 1/2 Ø X 2 15/16 C-C
  - (2) C40034143 U-BOLT ASSEMBLY, 1/2 Ø X 4 1/16 C-C



ISOMETRIC VIEW

C10166304 T-ARM ASSEMBLY				
ITEM	QTY.	PART NO.	DESCRIPTION	WEIGHT
1.	1	CW00144	T-ARM WELDMENT	65
2.	1	CW00076	SUPPORT PIPE WELDMENT	46
3.	1	CS00038	T-ARM CROSSOVER PLATE	22
* 4.	2	C10902013	PIPE CROSSOVER PLATE KIT	18
5.	4	C40026025	BOLT ASSEMBLY 5/8 Ø X 2 1/2 A325	2
6.	8	C40034028	U-BOLT ASSEMBLY 5/8 Ø X 4 3/16 C-C	15
TOTAL WEIGHT				168




PLAN VIEW

**Distributed By**  
**Rosenberger**  
Rosenberger Site Solutions, LLC  
visit [www.RosenbergerOnline.us](http://www.RosenbergerOnline.us)

NOTES:

- 1. TRI-COLLAR MOUNT IS SHOWN TYPICAL AND MUST BE PURCHASED SEPARATELY.
- 2. 2 3/8" O.D. MOUNTING PIPES MUST BE PURCHASED SEPARATELY.
- 3. QUANTITIES SHOWN IN LIST OF MATERIAL ARE FOR ONE (1) T-ARM ASSEMBLY ONLY.
- 4. OPTIONAL MOUNTING LOCATION  
(2) C40034023 U-BOLTS 5/8 Ø X 3 1/16" C/C AND (1) 2 3/8 O.D. MOUNTING PIPE MUST BE PURCHASED SEPARATELY.

UNLESS OTHERWISE SPECIFIED ALL DIMENSIONS INCLUDE FINISHES AND ARE IN INCHES					MATERIAL:										T-ARM ASSEMBLY 3'-0 ARM WITH 4'-0 FACE. NO ANTENNA MOUNTING PIPES									
TOLERANCES: FRACTIONS ± 1/16" ANGLES ± 1/2 DEG. DECIMALS ± .010"					TOLERANCES DO NOT APPLY TO RAW MATERIAL																			
										<div>CONFIDENTIAL</div> <div>This document and the information contained herein is the confidential trade secret property of Sabre Communications Corporation ("Sabre") and must not be reproduced, copied or used, in whole or in part, for any purpose without the prior written consent of Sabre.</div> <div>© 2014 Sabre Communications Corporation. All rights reserved.</div>														
REV	DATE	DRW	CHK	DESCRIPTION					DATE		11/20/14		SIZE B	DRAWING NO. C10166304				REV 0						
									DRAWN BY		WRF							PAGE 1 OF 1						
									CHECKED BY		KLE													