



Distributed By

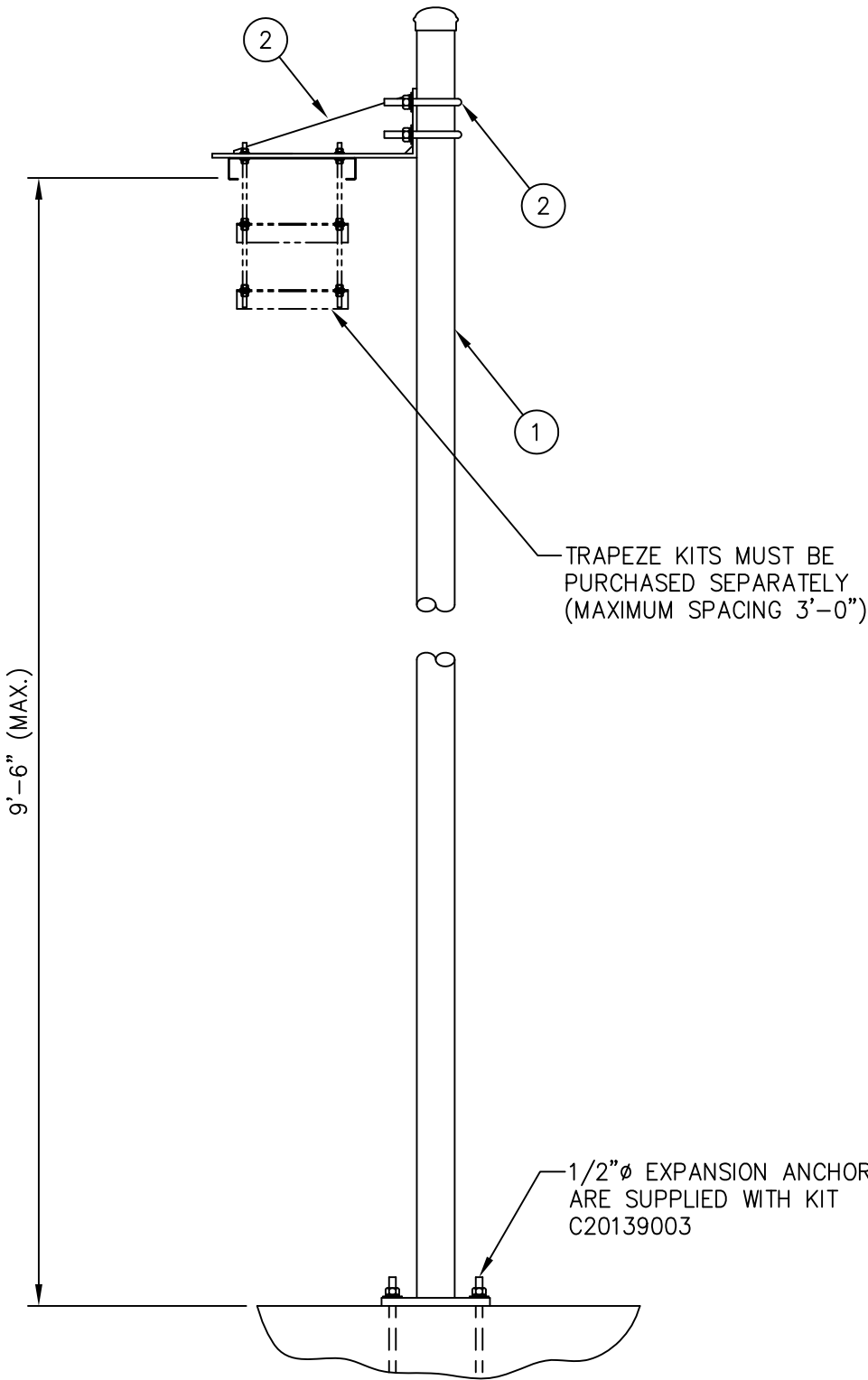
Rosenberger

Rosenberger Site Solutions, LLC

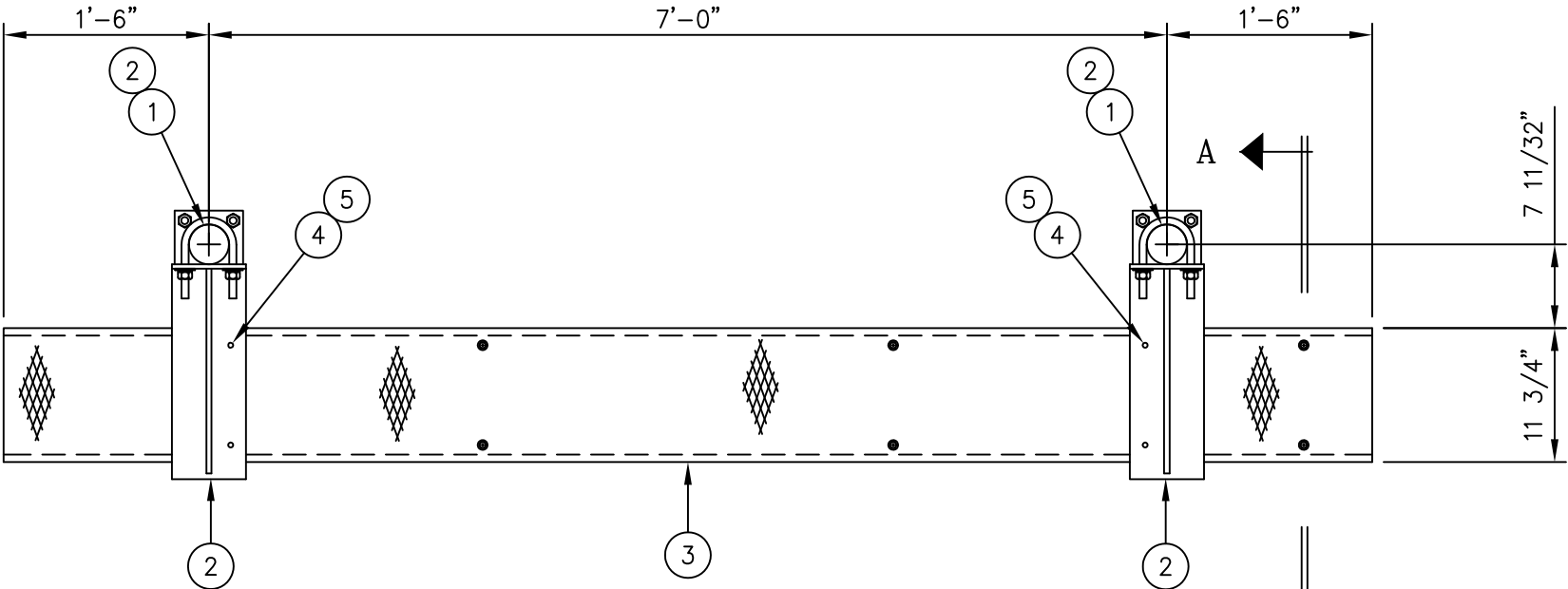
visit www.RosenbergerOnline.us

C20136021 GRIP STRUT WAVEGUIDE BRIDGE KIT

ITEM	QTY.	PART. NO.	DESCRIPTION	WEIGHT
1.	2	C20139003	WAVEGUIDE BRIDGE POST W/PIPE CAP & ANCHORS	178.8#
2.	2	C20140010	WAVEGUIDE BRIDGE SUPPORT ARM W/U-BOLTS	20.8#
3.	1	C20137001	GRIP STRUT WAVEGUIDE BRIDGE, 11 3/4" X 10'-0	44.0#
4.	4	C40012017	STAINLESS STEEL BOLT ASSY, 3/8 X 2	0.4#
5.	8	C40046001	FENDER WASHER, 7/16 I.D. X 1 1/2 O.D.	0.4#
TOTAL WEIGHT				244.4#




SECTION A-A



PLAN VEIW

NOTE:

THIS WAVEGUIDE BRIDGE ASSEMBLY IS NOT DESIGNED TO SUPPORT PERSONNEL OR EQUIPMENT.

UNLESS OTHERWISE SPECIFIED ALL DIMENSIONS INCLUDE FINISHES AND ARE IN INCHES				MATERIAL:			GRIP STRUT WAVEGUIDE BRIDGE WITH 10'-6" BASE PLATE COLUMNS (11 3/4" WIDE X 10'-0") NO TRAPEZE					
TOLERANCES: FRACTIONS ± 1/16" ANGLES ± 1/2 DEG. DECIMALS ± .010"				TOLERANCES DO NOT APPLY TO RAW MATERIAL								
						<div>CONFIDENTIAL</div> <div>This document and the information contained herein is the confidential trade secret property of Sabre Communications Corporation ("Sabre") and must not be reproduced, copied or used, in whole or in part, for any purpose without the prior written consent of Sabre. © 2006 Sabre Communications Corporation. All rights reserved.</div>			SIZE	DRAWING NO.		REV
							DATE	6/5/03	B	C20136021		0
							DRAWN BY		KLE			
							CHECKED BY		PSB			
											SCALE	PAGE
											None	1 OF 1
REV	DATE	DRW	CHK	DESCRIPTION								