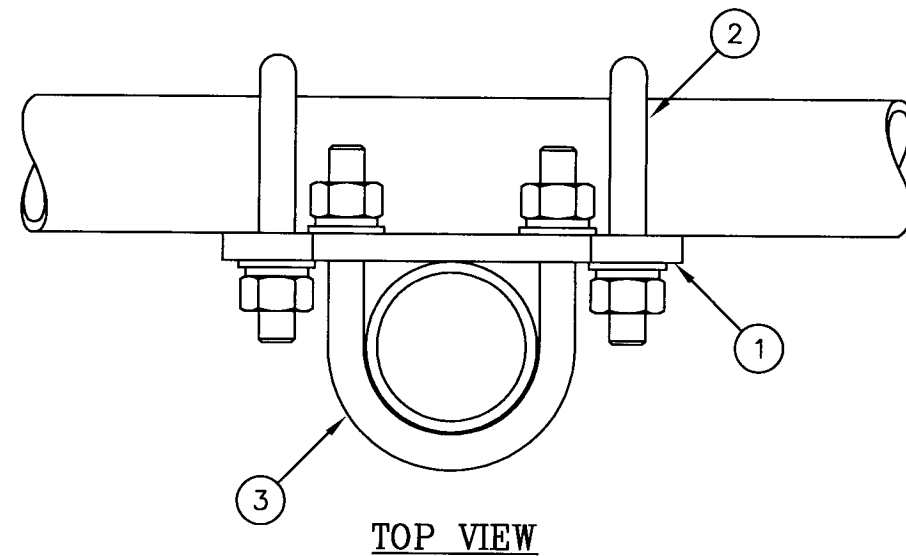


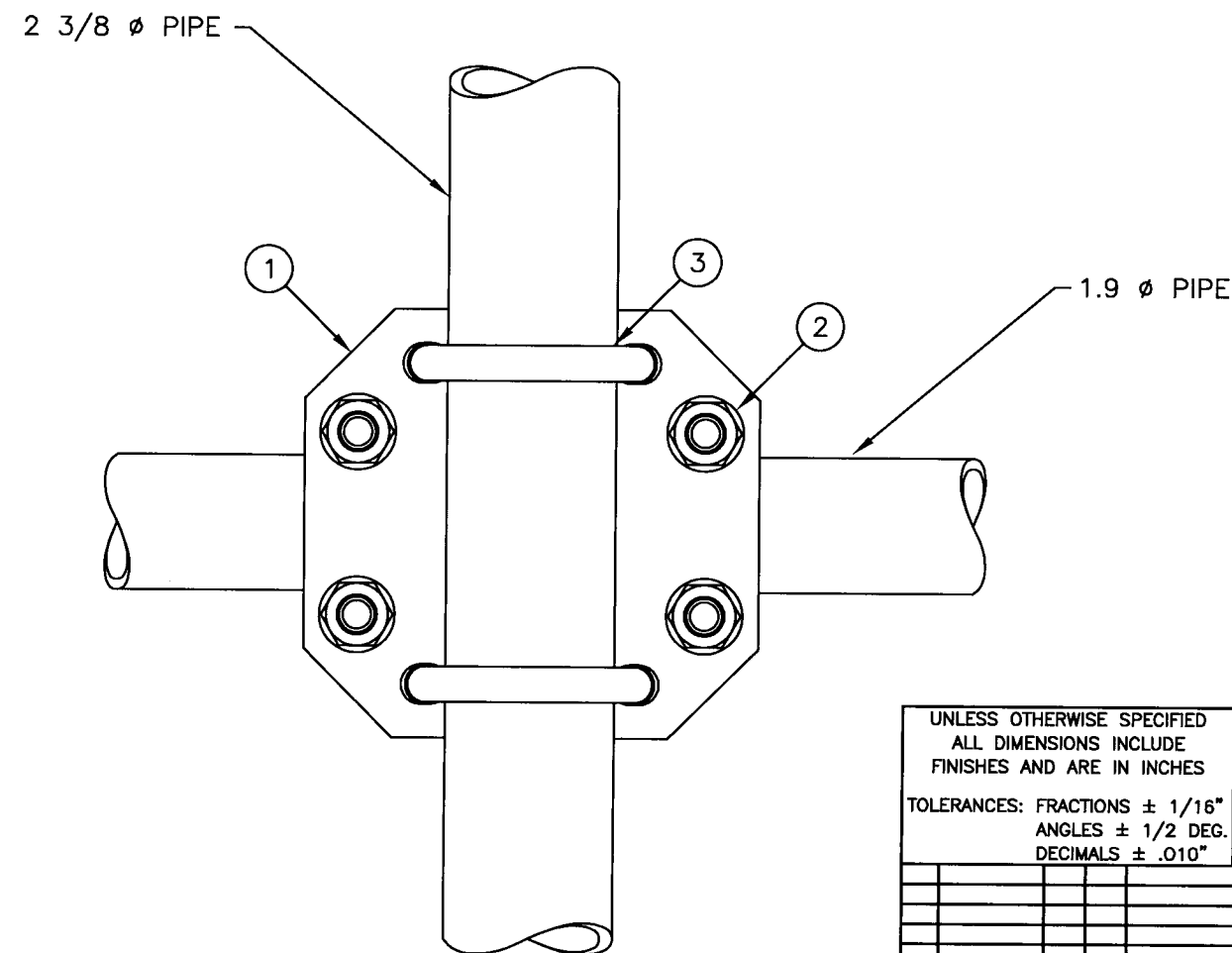


C10902020 CROSSOVER PLATE KIT

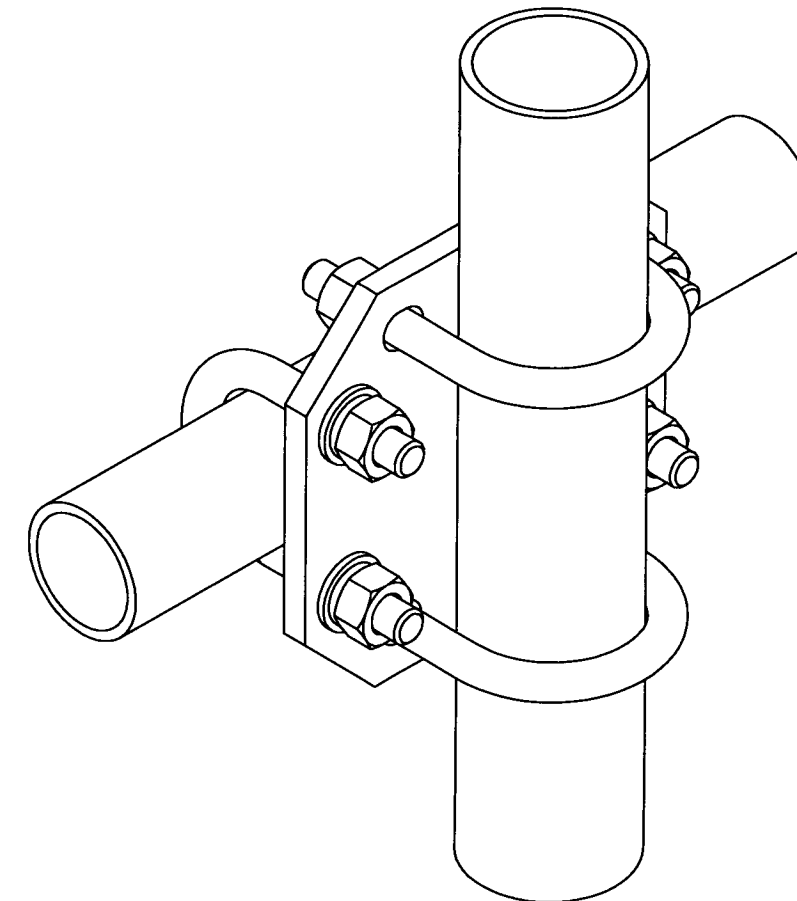
ITEM	QTY.	PART NO.	DESCRIPTION	WEIGHT
1.	1	CS03335	CROSSOVER PLATE	4
2.	2	C40034060	U-BOLT ASSEMBLY, 1/2" Ø X 2 9/16" C-C	1
3.	2	C40034139	U-BOLT ASSEMBLY, 1/2" Ø X 2 15/16" C-C	2
TOTAL WEIGHT				7



TOP VIEW



FRONT VIEW



ISOMETRIC VIEW

Distributed By
Rosenberger
Rosenberger Site Solutions, LLC
visit www.RosenbergerOnline.us

UNLESS OTHERWISE SPECIFIED
ALL DIMENSIONS INCLUDE
FINISHES AND ARE IN INCHES
TOLERANCES: FRACTIONS $\pm 1/16"$
ANGLES $\pm 1/2$ DEG.
DECIMALS $\pm .010"$

MATERIAL:

TOLERANCES DO NOT APPLY
TO RAW MATERIAL

Sabre Industries™
Towers and Poles

CONFIDENTIAL

This document and the information
contained herein is the confidential trade
secret property of Sabre Communications
Corporation ("Sabre") and must not be
reproduced, copied or used, in whole or in
part, for any purpose without the prior
written consent of Sabre.
© 2016 Sabre Communications Corporation.
All rights reserved.

CROSSOVER PLATE KIT
1.9" Ø TO 2 3/8" Ø PIPES
(1/2" Ø U-BOLTS)

REV	DATE	DRW/CHK	DESCRIPTION
-----	------	---------	-------------

		SIZE B	DRAWING NO. C10902020		REV 0
DATE	01/11/16				
DRAWN BY	WRF		SCALE None	PAGE 1 OF 1	
CHECKED BY	KLE				