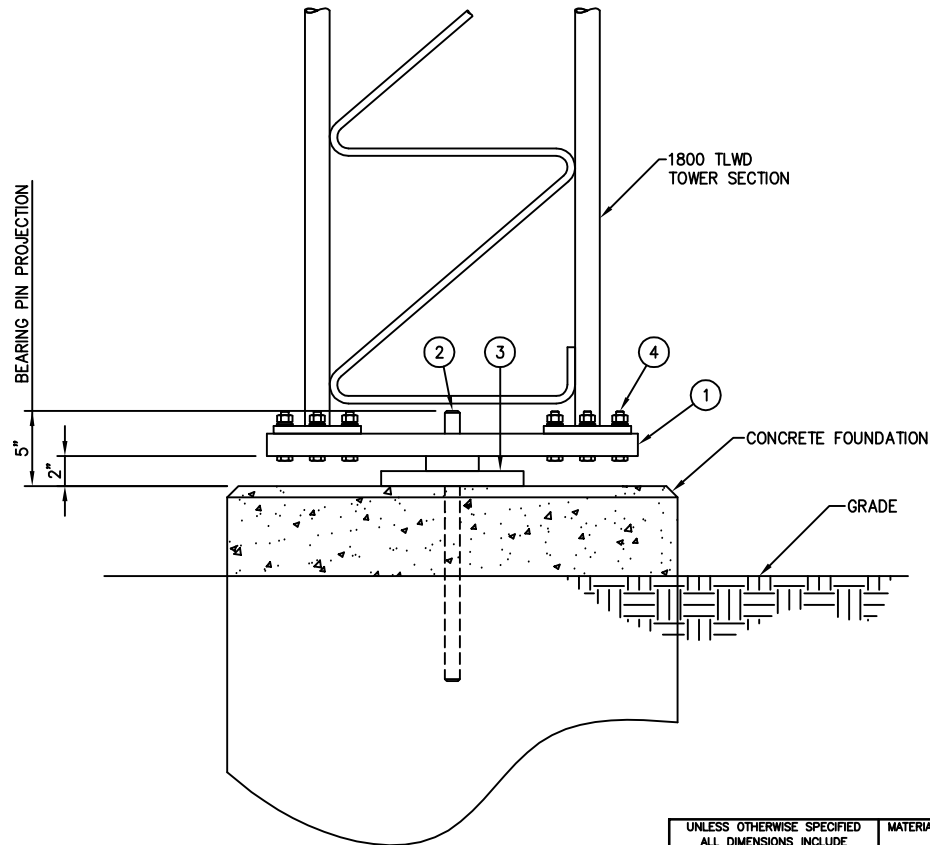


# C30904064 GUYED TOWER BASE INSTALLATION (MODEL 1800 TLWD)

ITEM	QTY.	PART NO.	DESCRIPTION	WEIGHT
1.	1	CW00230	WELDMENT, BASE PLATE	157.4#
2.	1	C30901010	BEARING PIN, 1"Ø	4.2#
3.	1	C30902010	BEARING PLATE	20.6#
4.	9	C40026009	BOLT ASSEMBLY, 1/2 X 3 A325	2.7#
			TOTAL WEIGHT	184.9#

## NOTE:

TOP OF BEARING PLATE TO BE LEVEL WITHIN  $\pm 1/16"$ .



ELEVATION VIEW

UNLESS OTHERWISE SPECIFIED  
ALL DIMENSIONS INCLUDE  
FINISHES AND ARE IN INCHES  
  
TOLERANCES: FRACTIONS  $\pm 1/16"$   
ANGLES  $\pm 1/2$  DEG.  
DECIMALS  $\pm .010"$

MATERIAL:  
  
TOLERANCES DO NOT APPLY  
TO RAW MATERIAL



**CONFIDENTIAL**  
This document and the information  
contained herein is the confidential trade  
secret property of Sabre Communications  
Corporation ("Sabre") and must not be  
reproduced, copied or used, in whole or in  
part, for any purpose without the prior  
written consent of Sabre.  
© 2006 Sabre Communications Corporation.  
All rights reserved.

## GUYED TOWER BASE INSTALLATION (MODEL 1800 TLWD)

REV	DATE	DRW	CHK	DESCRIPTION

DATE		SIZE	DRAWING NO.		REV
05/21/04		B	C30904064		0
DRAWN BY		SCALE		PAGE	
WRF		None		1 OF 1	
CHECKED BY					
DLW					