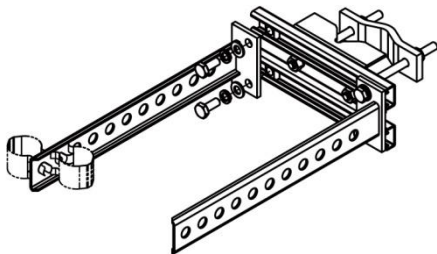


WAVEGUIDE MOUNT
C20-130-002R

ADJUSTABLE (FLAT) WAVEGUIDE MOUNT FOR 1-1/4" THROUGH 3-1/2" OD TOWER
LEG - 24-LINE SUPPORT.



Dimensions

Height	120.65 mm 4-3/4 in
Length	546.10 mm 21-1/2 in
Width	311.15 mm 12-1/4 in
Weight	6.35 kg 14.0 lb

General Specifications

Snap-ins Per Assembly	24
Hole Size	3/4 in
Hole, quantity	24
Includes	Brackets
Material Type	Steel
Finish	Hot Dip Galvanized

Mounting

Mounting Type	Round Member
Mounting Range	1-1/4 in to 3-1/2 in OD
Torque	25 ft-lbs

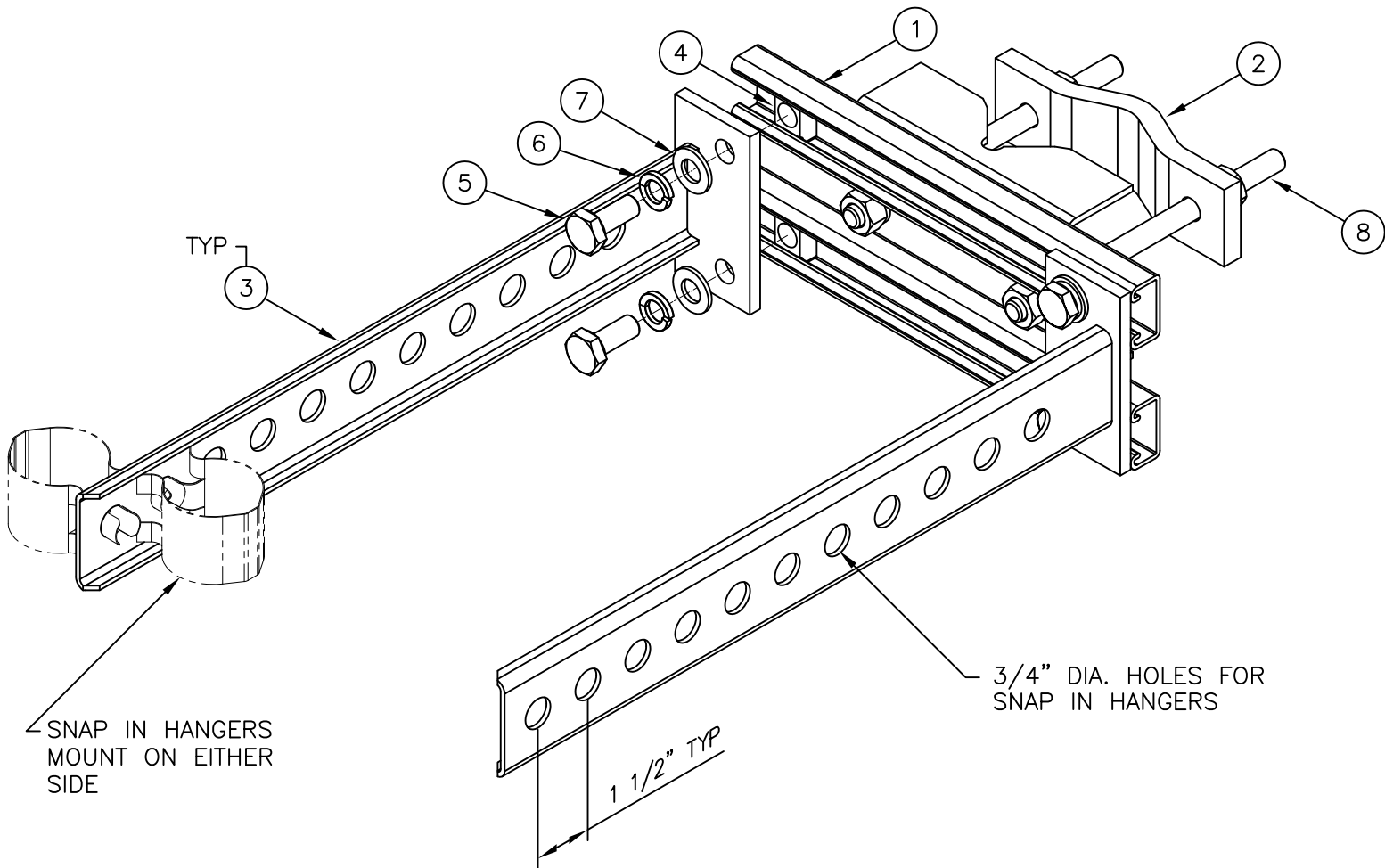
Packaging

Package Quantity	1 Kit
------------------	-------



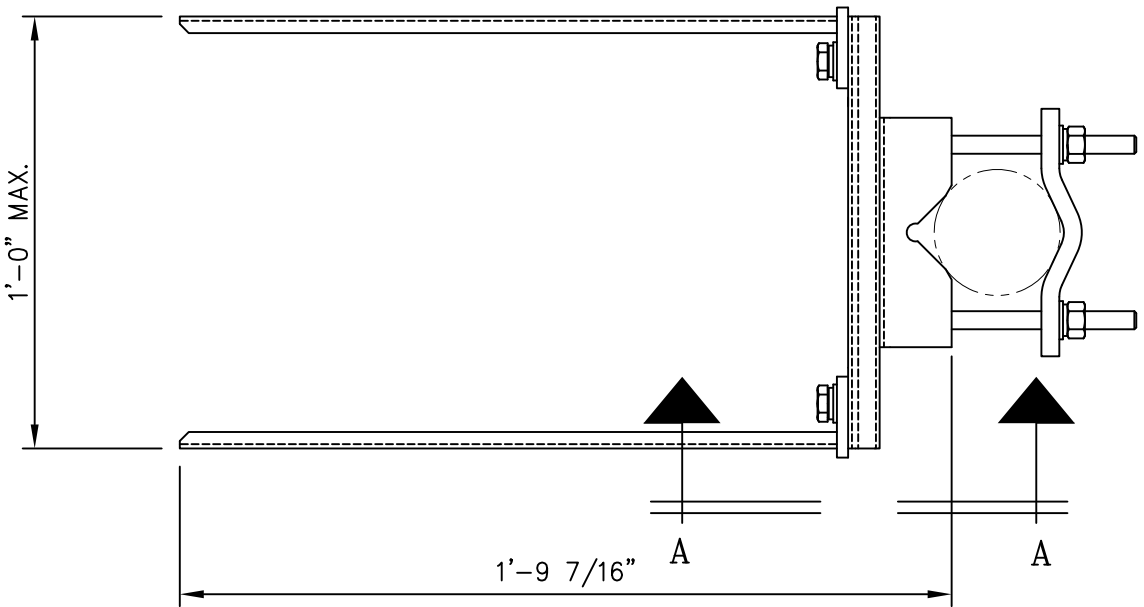
TORQUE SPECIFICATIONS

*ALL BOLTS TO BE TORQUED TO 25 FT-LBS

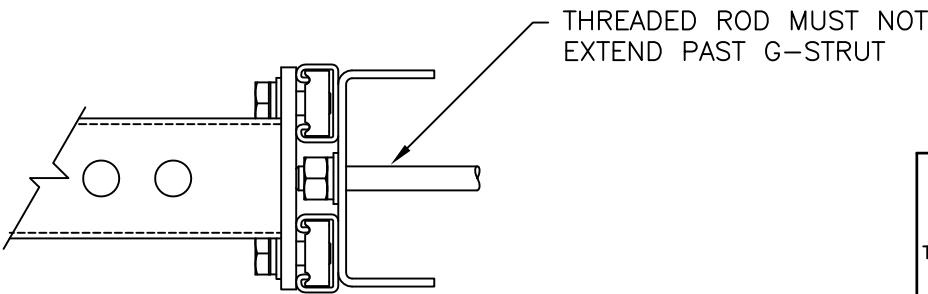


ISOMETRIC VIEW

C20130002R ADJUSTABLE (FLAT) WAVEGUIDE MOUNT				
ITEM	QTY.		DESCRIPTION	
1.	1	CW01315	WELDMENT, WAVEGUIDE PIPE MOUNT	5
2.	1	CS03286	SADDLE CLAMP	2
3.	2	CW01314	WELDMENT, SUPPORT RUNG	5
4.	4	C40998382	G-STRUT SPRING NUT GN-812 1/2"-13 OR EQUAL	1
5.	4	C40112028	BOLT, 1/2 Ø X 1 1/4 S.S.	1
6.	4	C40018003	1/2 Ø LOCK WASHER S.S.	1
7.	4	C40020012	1/2 Ø FLAT WASHER S.S.	1
8.	2	C40032025	THREADED ROD ASSEMBLY, 1/2 Ø X 0'-8"	2
TOTAL WEIGHT				18



TOP VIEW

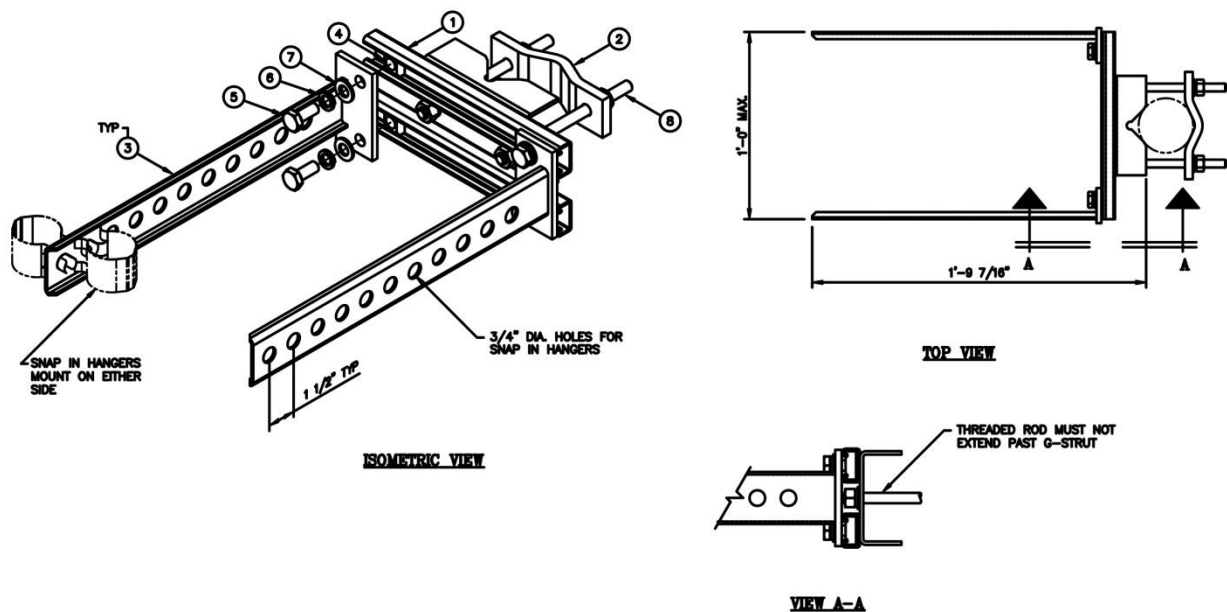


VIEW A-A

Distributed By
Rosenberger
Rosenberger Site Solutions, LLC
visit www.RosenbergerOnline.us

UNLESS OTHERWISE SPECIFIED ALL DIMENSIONS INCLUDE FINISHES AND ARE IN INCHES					MATERIAL:					MANUFACTURED BY Sabre Industries™ Towers and Poles					ADJUSTABLE (FLAT) WAVEGUIDE MOUNT ROSENBERGER SITE SOLUTIONS FITS 1 1/4" THROUGH 3 1/2" PIPES																																																																																																																																																																																																																																																																																																																																																																																																																																																																
TOLERANCES: FRACTIONS ± 1/16" ANGLES ± 1/2 DEG. DECIMALS ± .010"					TOLERANCES DO NOT APPLY TO RAW MATERIAL					CONFIDENTIAL This document and the information contained herein is the confidential trade secret property of Sabre Communications Corporation ("Sabre") and must not be reproduced, copied or used, in whole or in part, for any purpose without the prior written consent of Sabre. © 2015 Sabre Communications Corporation. All rights reserved.					DATE		12/15/15		SIZE B		DRAWING NO. C20130002R				REV 0																																																																																																																																																																																																																																																																																																																																																																																																																																																						
															DRAWN BY		WRF																																																																																																																																																																																																																																																																																																																																																																																																																																																														
															CHECKED BY		EK						SCALE None		PAGE 1 OF 1																																																																																																																																																																																																																																																																																																																																																																																																																																																						
REV	DATE	DRW	CHK																																																																																																																																																																																																																																																																																																																																																																																																																																																																												

Outline Drawing



ITEM	Description	QTY
1	Weldment, Waveguide Pipe Mount	5
2	Saddle Clamp	2
3	Weldment, Support Rung	5
4	G-Strut Sprint Nut GN-812 1/2"-13 or Equal	1
5	Bolt, 1/2 Ø x 1 1/4 S.S.	1
6	1/2 Ø Lock Washer S.S.	1
7	1/2 Ø Flat Washer S.S.	1
8	Threaded Rod Assembly, 1/2 Ø x 0' - 8"	2