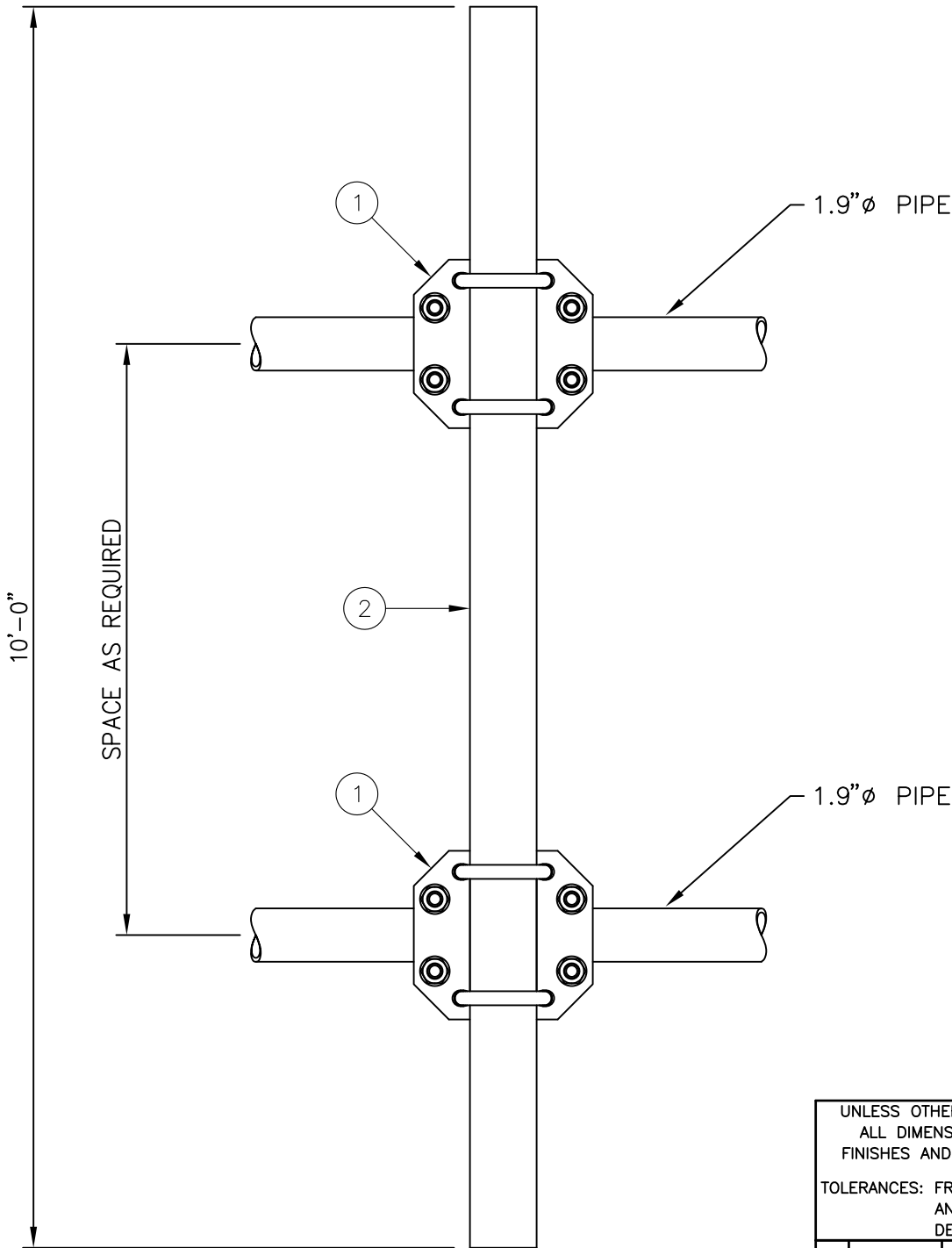
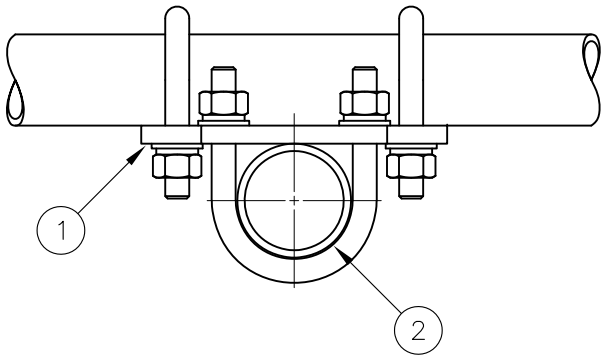


* EACH C10902020 CROSSOVER PLATE KIT CONSISTS OF . . .
(1) CS03335 CROSSOVER PLATE
(2) C40034060 U-BOLT ASSEMBLY, 1/2"Ø X 2 9/16 C-C
(2) C40034139 U-BOLT ASSEMBLY, 1/2"Ø X 2 15/16 C-C

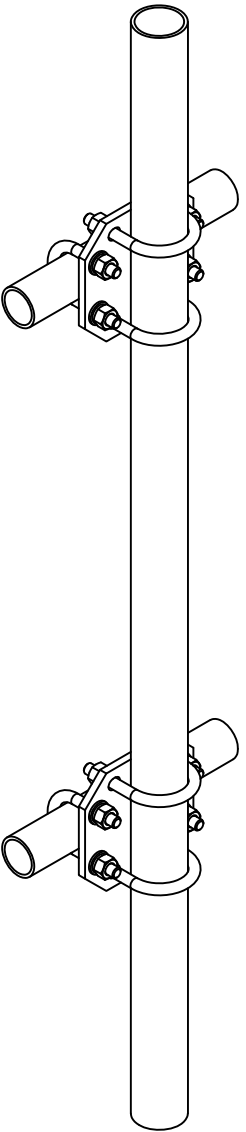
C10900801 DUAL CROSSOVER PLATE KIT W/MTG PIPE				
ITEM	QTY.	PART NO.	DESCRIPTION	WEIGHT
1.	2	C10902020	CROSSOVER PLATE KIT	14
2.	1	C10901224	PIPE, 2 3/8"Ø X .154 X 10'-0"	38
TOTAL WEIGHT				52




FRONT VIEW



TOP VIEW



ISOMETRIC VIEW

UNLESS OTHERWISE SPECIFIED ALL DIMENSIONS INCLUDE FINISHES AND ARE IN INCHES				MATERIAL:			DUAL CROSSOVER PLATE KIT FOR 1.9"ø TO 2 3/8"ø PIPES W/ 2 3/8"ø X .154 X 10'-0" MOUNTING PIPE (1/2"ø U-BOLTS)					
TOLERANCES: FRACTIONS ± 1/16" ANGLES ± 1/2 DEG. DECIMALS ± .010"				TOLERANCES DO NOT APPLY TO RAW MATERIAL								
						<p align="center">CONFIDENTIAL</p> <p>This document and the information contained herein is the confidential trade secret property of Sabre Communications Corporation ("Sabre") and must not be reproduced, copied or used, in whole or in part, for any purpose without the prior written consent of Sabre.</p> <p>© 2019 Sabre Communications Corporation. All rights reserved.</p>			SIZE B	DRAWING NO. C10900801	REV 0	
							DATE	09/20/19				
							DRAWN BY	WRF			SCALE None	PAGE 1 OF 1
							CHECKED BY	DLW				
REV	DATE	DRW	CHK	DESCRIPTION								