

### TIEBACK ANGLE RANGE DETAIL

+/- 15 DEGREES VERTICAL  
+/- 25 DEGREES HORIZONTAL

+15 DEGREES

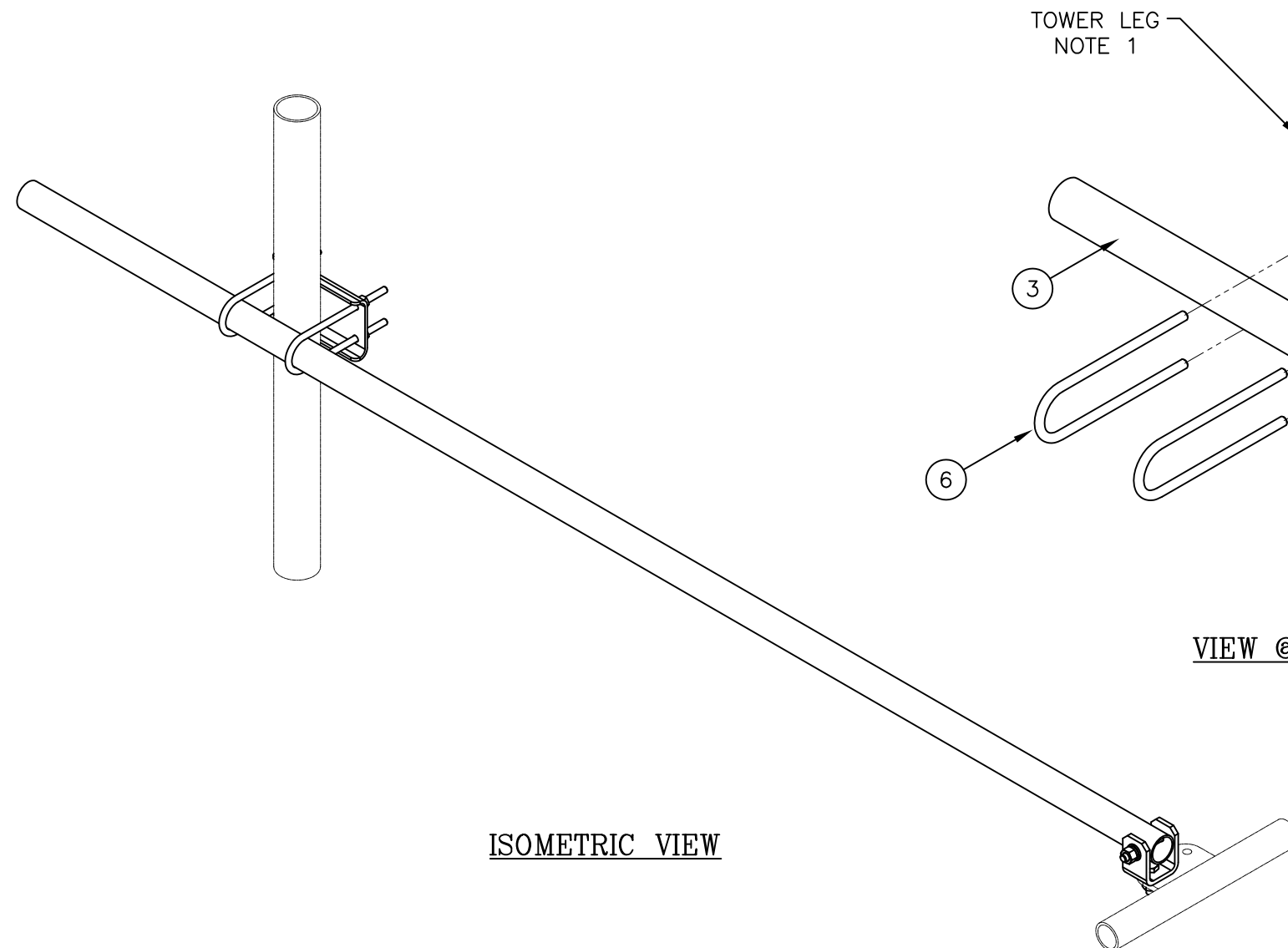
-25 DEGREES      +25 DEGREES  
-15 DEGREES

**Distributed By**

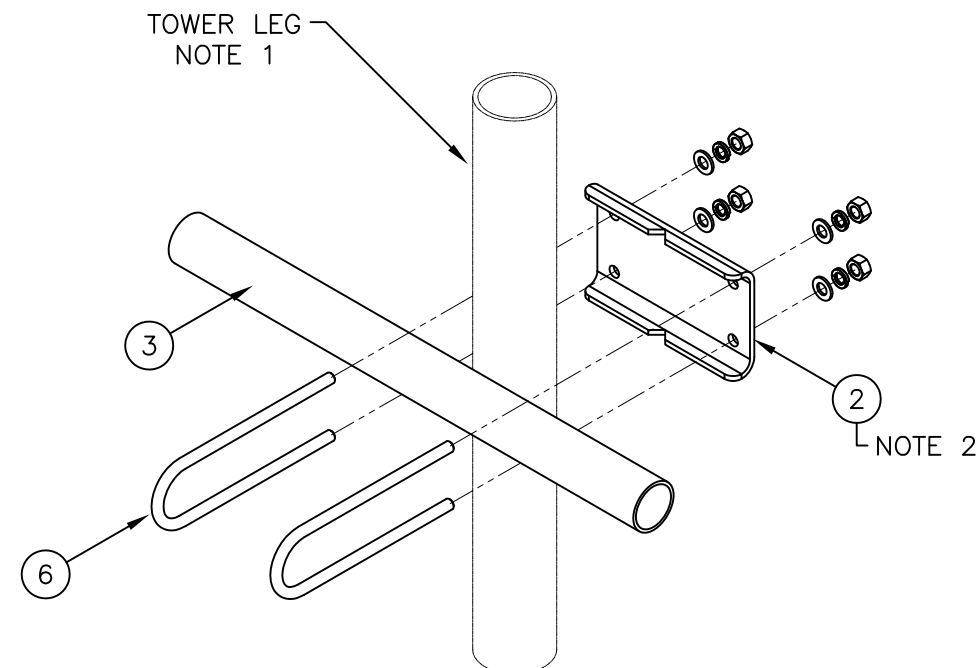
**Rosenberger**  
Rosenberger Site Solutions, LLC  
visit [www.RosenbergerOnline.us](http://www.RosenbergerOnline.us)

## C10175100 TIEBACK ASSEMBLY

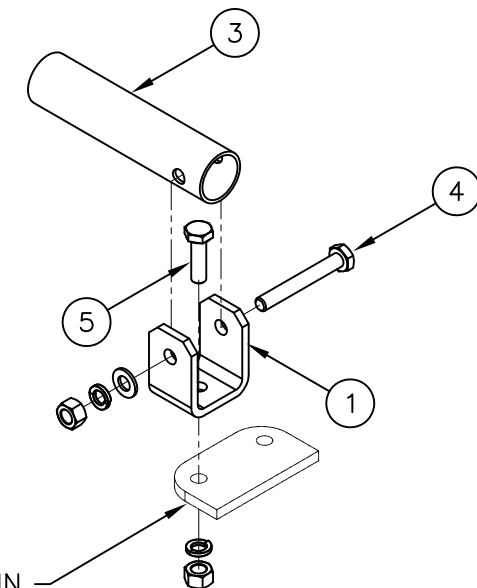
ITEM	QTY.	PART NO.	DESCRIPTION	WEIGHT
1.	1	CS00098	PLATE, TIE BACK SWIVEL	3
2.	1	CS03285	PLATE, TIE BACK CLAMP	4
3.	1	CS03333	PIPE, TIE BACK	38
4.	1	C40026033	BOLT ASSEMBLY, 5/8 Ø X 4 1/2 A325	1
5.	1	C40026024	BOLT ASSEMBLY, 5/8 Ø X 2 1/4 A325	1
6.	2	C40034183	U-BOLT ASSEMBLY, 1/2 Ø X 2 9/16 C-C	3
			TOTAL WEIGHT	50



ISOMETRIC VIEW



VIEW @ TOWER LEG




TIEBACK POINT IN  
MOUNTING FRAME  
(SHOWN TYPICAL)

VIEW @ MOUNTING FRAME

NOTES:

1. THIS TIEBACK WILL MOUNT TO THE FOLLOWING: 1 1/2"Ø TO 6 1/4"Ø ROUND LEG.
2. TIEBACK MUST BE CONNECTED TO A RIGID MEMBER THAT PROVIDES ADEQUATE SUPPORT WITHIN THE LIMITS NOTED ABOVE IN THE TIEBACK ANGLE RANGE DETAIL UNLESS APPROVED BY THE ENGINEER OF RECORD.

UNLESS OTHERWISE SPECIFIED ALL DIMENSIONS INCLUDE FINISHES AND ARE IN INCHES				MATERIAL:				TIEBACK ASSEMBLY							
TOLERANCES: FRACTIONS ± 1/16" ANGLES ± 1/2 DEG. DECIMALS ± .010"				TOLERANCES DO NOT APPLY TO RAW MATERIAL											
						<p><b>CONFIDENTIAL</b></p> <p>This document and the information contained herein is the confidential trade secret property of Sabre Communications Corporation ("Sabre") and must not be reproduced, copied or used, in whole or in part, for any purpose without the prior written consent of Sabre.</p> <p>© 2016 Sabre Communications Corporation. All rights reserved.</p>									
REV	DATE	DRW	CHK	DESCRIPTION				DATE	05/09/16	SIZE	B	DRAWING NO.	C10175100	REV	0
								DRAWN BY	WRF			SCALE	None	PAGE 1 OF 1	
								CHECKED BY	DLW						