


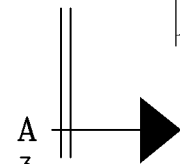
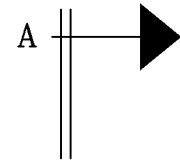
ISOMETRIC VIEW
SEE PAGES 2 & 3 FOR ADDITIONAL DETAILS


C10814555C 14' HD PLATFORM W/COLLARS & SUPPORT RAIL				
ITEM	QTY.	PART NO.	DESCRIPTION	WEIGHT
1.	2	C10112377	TRI-COLLAR BRACKET ASSEMBLY (10"-40" MONOPOLE)	416
2.	3	CW01336	WELDMENT, EXTENSION	161
3.	3	CW01320	WELDMENT, PLATFORM CORNER	612
4.	3	CS03440	SQUARE TUBE, 3 X 3 X 3/16 X 14'-6	311
5.	3	CS03354	PLATE, UPPER CONNECTION	22
6.	3	CW01322	WELDMENT, KICKER SUPPORT	31
7.	3	CW01291	WELDMENT, KICKER SUPPORT	32
8.	6	CS03441	ANGLE, KICKER	115
9.	3	CS03349	PLATE, CONNECTION 3/8 X 4 3/8 X 3'-6 1/16	56
10.	3	C10931028	PIPE, 1.9 O.D. X .145 X 14'-6	123
11.	12	C40026025	BOLT ASSEMBLY, 5/8 Ø X 2 1/2 A325	6
12.	21	C40026024	BOLT ASSEMBLY, 5/8 Ø X 2 1/4 A325	11
13.	12	C40026023	BOLT ASSEMBLY, 5/8 Ø X 2 A325	6
14.	12	C40024106	BOLT ASSEMBLY, 1/2 Ø X 6 1/2 GR5 FULL THD	5
15.	12	C40031003	FLATWASHER, 5/8 Ø HARDENED ASTM F436	1
16.	24	C40031002	FLATWASHER, 1/2 Ø HARDENED ASTM F436	1
17.	3	C40047003	RINGFILL, 3/8 THICK - 5/8 Ø BOLT	1
18.	12	C40035017	SQ. U-BOLT ASSEMBLY, 5/8 Ø X 4 1/4 C-C	25
19.	12	C40034060	U-BOLT ASSEMBLY, 1/2 Ø X 2 9/16 C-C	9
20.	1	Z30992031	MOUNT CLASSIFICATION TAG C10814555C	1
21.	2	C40062104	STAINLESS STEEL SELF-LOCKING CABLE TIE	1
TOTAL WEIGHT				1946

MOUNTING PIPES & CROSSOVER PLATE KITS
MUST BE PURCHASED SEPARATELY

Distributed By
Rosenberger
Rosenberger Site Solutions, LLC
Call 1.866.598.5250 or visit www.RLSS.us

UNLESS OTHERWISE SPECIFIED ALL DIMENSIONS INCLUDE FINISHES AND ARE IN INCHES				MATERIAL:				14' HD PLATFORM WITH COLLARS & SUPPORT RAIL FITS 10"Ø TO 40"Ø MONOPOLES									
TOLERANCES: FRACTIONS ± 1/16" ANGLES ± 1/2 DEG. DECIMALS ± .010"				TOLERANCES DO NOT APPLY TO RAW MATERIAL													
						CONFIDENTIAL This document and the information contained herein is the confidential trade secret property of Sabre Communications Corporation ("Sabre") and must not be reproduced, copied or used, in whole or in part, for any purpose without the prior written consent of Sabre. © 2017 Sabre Communications Corporation. All rights reserved.				SIZE		DRAWING NO.		REV			
								DATE		02/13/17		B		C10814555C		0	
								DRAWN BY		WRF							
								CHECKED BY		KLE							
														SCALE		PAGE	
														None		1 OF 3	
REV	DATE	DRW	CHK	DESCRIPTION													

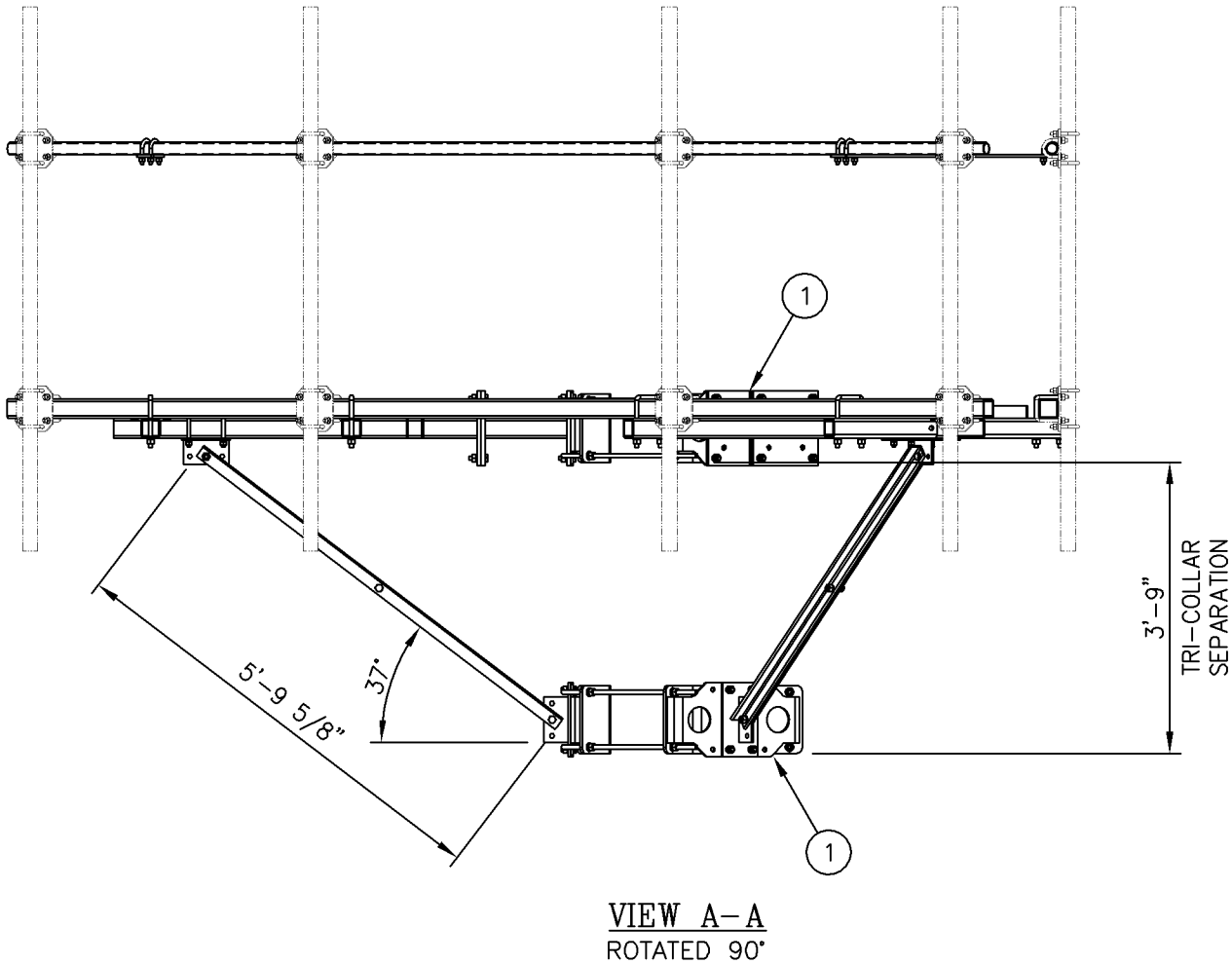
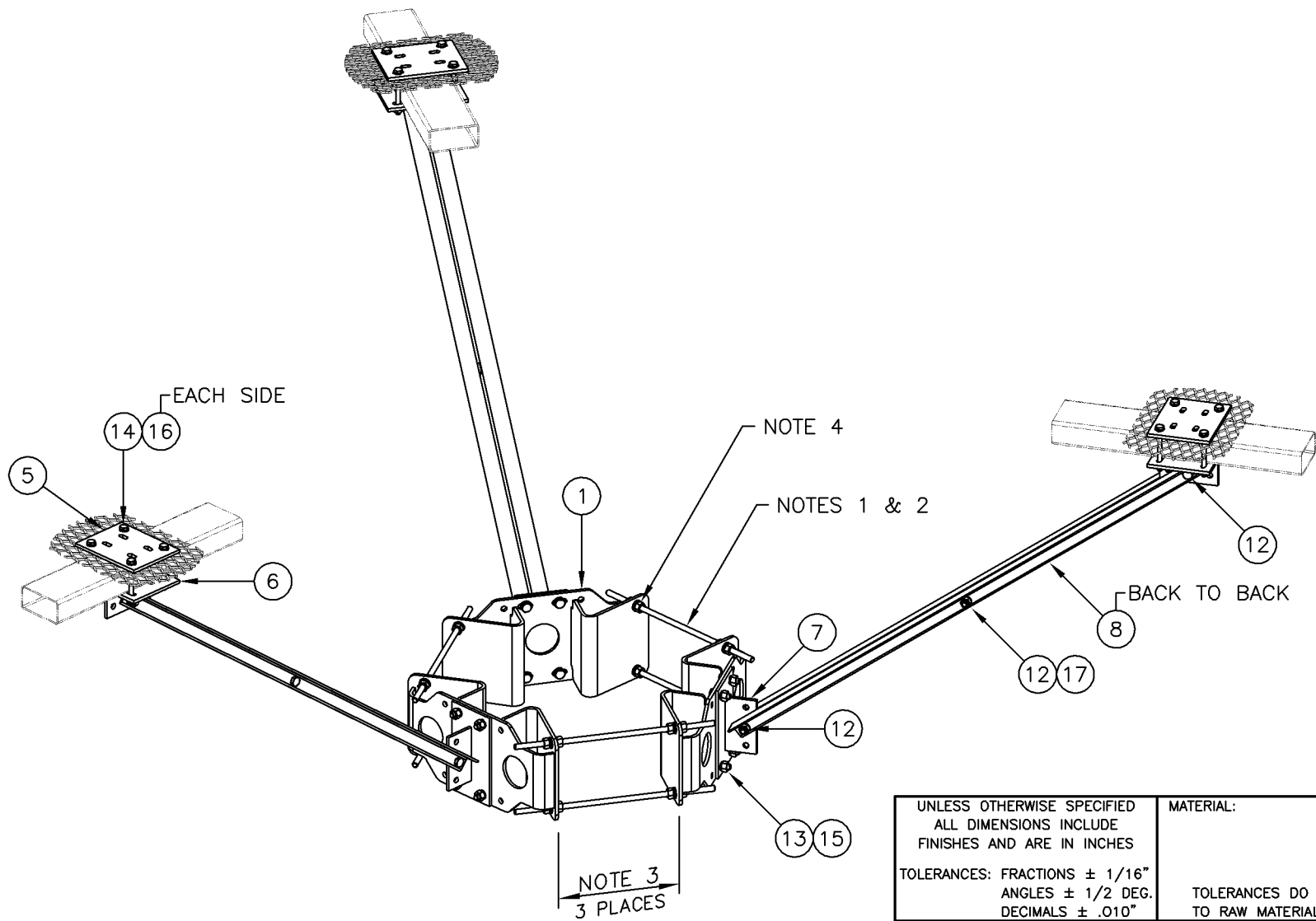


UNLESS OTHERWISE SPECIFIED ALL DIMENSIONS INCLUDE FINISHES AND ARE IN INCHES				MATERIAL:				14' HD PLATFORM WITH COLLARS & SUPPORT RAIL FITS 10"Ø TO 40"Ø MONOPOLES																																																																			
TOLERANCES: FRACTIONS ± 1/16" ANGLES ± 1/2 DEG. DECIMALS ± .010"				TOLERANCES DO NOT APPLY TO RAW MATERIAL																																																																							
<table border="1"> <tr><td></td><td></td><td></td><td></td><td></td><td></td></tr> <tr><td></td><td></td><td></td><td></td><td></td><td></td></tr> <tr><td></td><td></td><td></td><td></td><td></td><td></td></tr> <tr><td></td><td></td><td></td><td></td><td></td><td></td></tr> <tr><td></td><td></td><td></td><td></td><td></td><td></td></tr> <tr><td></td><td></td><td></td><td></td><td></td><td></td></tr> <tr><td></td><td></td><td></td><td></td><td></td><td></td></tr> <tr><td></td><td></td><td></td><td></td><td></td><td></td></tr> <tr><td></td><td></td><td></td><td></td><td></td><td></td></tr> <tr><td></td><td></td><td></td><td></td><td></td><td></td></tr> </table>																																																																		<p align="center">CONFIDENTIAL</p> <p>This document and the information contained herein is the confidential trade secret property of Sabre Communications Corporation ("Sabre") and must not be reproduced, copied or used, in whole or in part, for any purpose without the prior written consent of Sabre.</p> <p>© 2017 Sabre Communications Corporation. All rights reserved.</p>				SIZE B		DRAWING NO. C10814555C		REV 0	
DATE		02/13/17																																																																									
DRAWN BY		WRF						SCALE None		PAGE 2 OF 3																																																																	
CHECKED BY		KLE																																																																									
REV	DATE	DRW/CHK	DESCRIPTION																																																																								



TRI-COLLAR NOTES:

1. THERE ARE (2) LENGTHS OF THREADED ROD SUPPLIED TO ACCOMMODATE DIAMETERS LISTED BELOW.
USE 5/8 X 1'-6" THREADED ROD ASSEMBLY FOR 10"-24" MONOPOLE DIAMETERS.
USE 5/8 X 2'-9" THREADED ROD ASSEMBLY FOR 24"-40" MONOPOLE DIAMETERS (SEE NOTE 2).
2. THREADED ROD MAY BE SHORTENED IF REQUIRED, FIELD CUT AND COLD GALV SPRAY TO SUIT.
3. THIS DISTANCE MUST BE EQUAL IN ALL (3) THREE LOCATIONS TO ENSURE THE STRUCTURAL INTEGRITY OF THE THREADED RODS AS WELL AS 120° SEPARATION.
4. FOR MONOPOLES 13" DIA. OR SMALLER, ONLY (1) ONE NUT AND (1) ONE LOCKWASHER ARE REQUIRED BETWEEN THE TRI-COLLAR BRACKETS.
FOR MONOPOLES LARGER THAN 13" DIA., (2) TWO NUTS AND (2) TWO LOCKWASHERS ARE REQUIRED BETWEEN THE TRI-COLLAR BRACKETS.



TRI-COLLAR & PLATFORM REINFORCEMENT DETAIL

UNLESS OTHERWISE SPECIFIED ALL DIMENSIONS INCLUDE FINISHES AND ARE IN INCHES				MATERIAL:		<div>Sabre Industries™ Towers and Poles</div>		14' HD PLATFORM WITH COLLARS & SUPPORT RAIL FITS 10"Ø TO 40"Ø MONOPOLES			
TOLERANCES: FRACTIONS ± 1/16" ANGLES ± 1/2 DEG. DECIMALS ± .010"				TOLERANCES DO NOT APPLY TO RAW MATERIAL							
CONFIDENTIAL											
This document and the information contained herein is the confidential trade secret property of Sabre Communications Corporation ("Sabre") and must not be reproduced, copied or used, in whole or in part, for any purpose without the prior written consent of Sabre. © 2017 Sabre Communications Corporation. All rights reserved.											
	</										