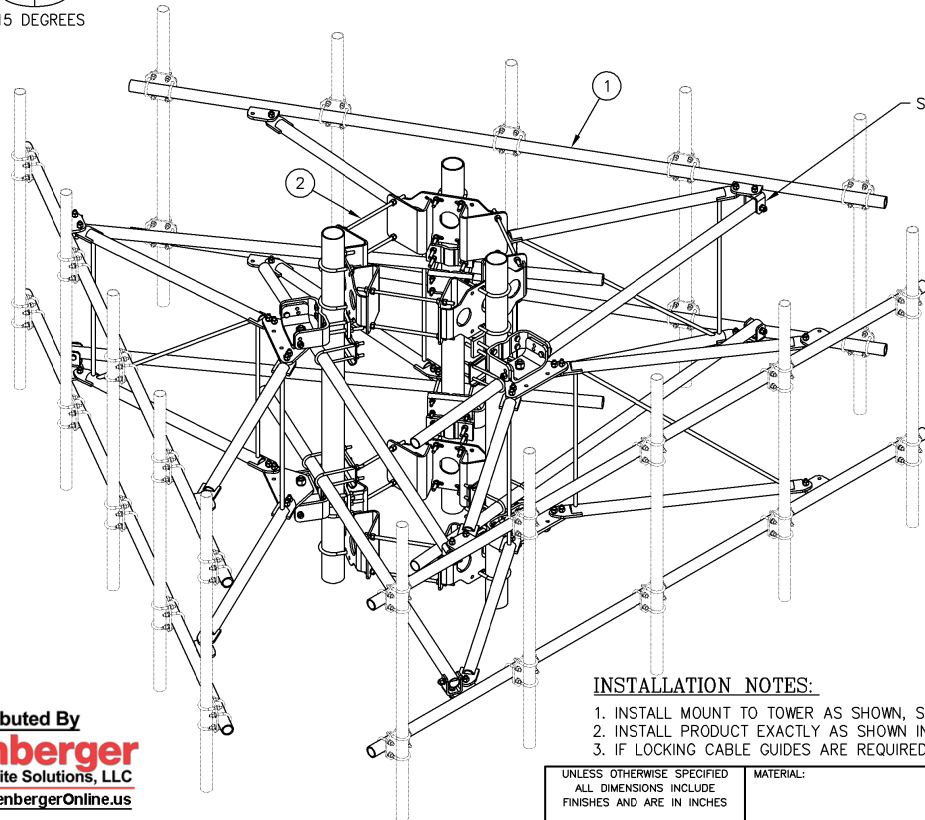


+/- 15 DEGREES VERTICAL  
+/- 25 DEGREES HORIZONTAL

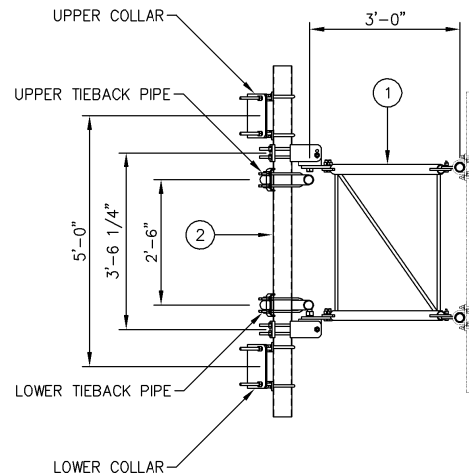
+15 DEGREES

-25 DEGREES      +25 DEGREES  
-15 DEGREES   



ISOMETRIC VIEW

C10857803 12' EHD V-BOOM ASSEMBLIES W/TIEBACKS				
ITEM	QTY.	PART NO.	DESCRIPTION	WEIGHT
1.	3	C10857007C	12' EHD V-BOOM ASSEMBLY W/TIE BACKS	1533
2.	1	C10899050	4 1/2" O.D. MONOPOLE PIPE MOUNT ASSEMBLY	678
			TOTAL WEIGHT	2211



VIEW A-A  
FROM PAGE 2

### INSTALLATION NOTES:

1. INSTALL MOUNT TO TOWER AS SHOWN, SO THAT WELDED STANDOFF DIAGONAL IS SLOPING DOWNWARD FROM TOWER END TO FACE PIPE END.
2. INSTALL PRODUCT EXACTLY AS SHOWN IN DRAWING, WITH ALL BOLTS FACING UPWARDS.
3. IF LOCKING CABLE GUIDES ARE REQUIRED THEY MUST BE PURCHASED SEPARATELY (SEE PAGE 3).

NOTES:

1. SEE DRAWING C10899050 FOR INSTALLATION OF 4 1/2" O.D. MONOPOLE PIPE MOUNT ASSEMBLY.
2. SEE DRAWING C10857007C FOR INSTALLATION OF 12' V-BOOM ASSEMBLY W/TIEBACK.
3. MOUNTING PIPES & CROSSLAYER PLATE KITS MUST BE PURCHASED SEPARATELY.
4. QUANTITIES SHOWN IN LIST OF MATERIAL ARE FOR A COMPLETE (3) SECTOR INSTALLATION.
5. THE TIEBACK IS SHOWN IN THIS POSITION AS A DEFAULT. THIS TIEBACK CAN BE CONNECTED AT ANY (2) OF THE (4) POSITIONS ON THE TABS ON THE FACE PIPE.

[illegible]

**Sabre Industries™**  
Towers and Poles

CONFIDENTIAL

This document and the information contained herein is the confidential trade secret property of Sabre Communications Corporation ("Sabre") and must not be reproduced, copied or used, in whole or in part, for any purpose without the prior written consent of Sabre.  
© 2018 Sabre Communications Corporation.  
All rights reserved.

12' EHD V-BOOM ASSEMBLY W/TIEBACK  
(3' STANDOFF)  
ON MONOPOLE PIPE MOUNT ASSEMBLY  
W/NO ANTENNA MOUNTING PIPES

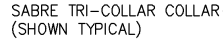
		SIZE	DRAWING NO.		REV
DATE	09/24/18	B	C10857803		1
DRAWN BY	WRF			SCALE	PAGE
CHECKED BY	WMN			None	1 OF 3



IF REQUIRED PLEASE ORDER THE APPROPRIATE KIT BELOW TO FIT YOUR INDIVIDUAL FIELD NEEDS.



- SABRE V-BOOM  
(SHOWN TYPICAL)

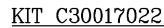


~ SABRE TRI-COLLAR COLLAR  
(SHOWN TYPICAL)

KIT C30017031

KIT C30017032

## OPTIONAL CABLE GUIDE MOUNTING OPTIONS



- 5/8 Ø BOLT ASSEMBLY  
ON V-BOOM BRACKET

- SAFETY CABLE

**Rosenberger**  
Rosenberger Site Solutions, LLC  
visit [www.RosenbergerOnline.us](http://www.RosenbergerOnline.us)

OTHER ADDITIONAL CABLE GUIDE SUPPORTS MAY BE REQUIRED ABOVE AND BELOW V-BOOM SO THAT CABLE ALIGNMENT IS WITHIN REQUIRED LIMITS.

**Sabre Industries™**  
Towers and Poles

This document and the information contained herein is the confidential trade secret property of Sabre Communications Corporation ("Sabre") and must not be reproduced, copied or used, in whole or in part, for any purpose without the prior written consent of Sabre.

© 2018 Sabre Communications Corporation.  
All rights reserved.

12' EHD V-BOOM ASSEMBLY W/TIEBACK  
(3' STANDOFF)  
ON MONOPOLE PIPE MOUNT ASSEMBLY  
W/NO ANTENNA MOUNTING PIPES

		SIZE B	DRAWING NO. C10857803		REV 1
DATE	09/24/18				
DRAWN BY	WRF		SCALE None	PAGE 3 OF 3	
CHECKED BY	WMN				