
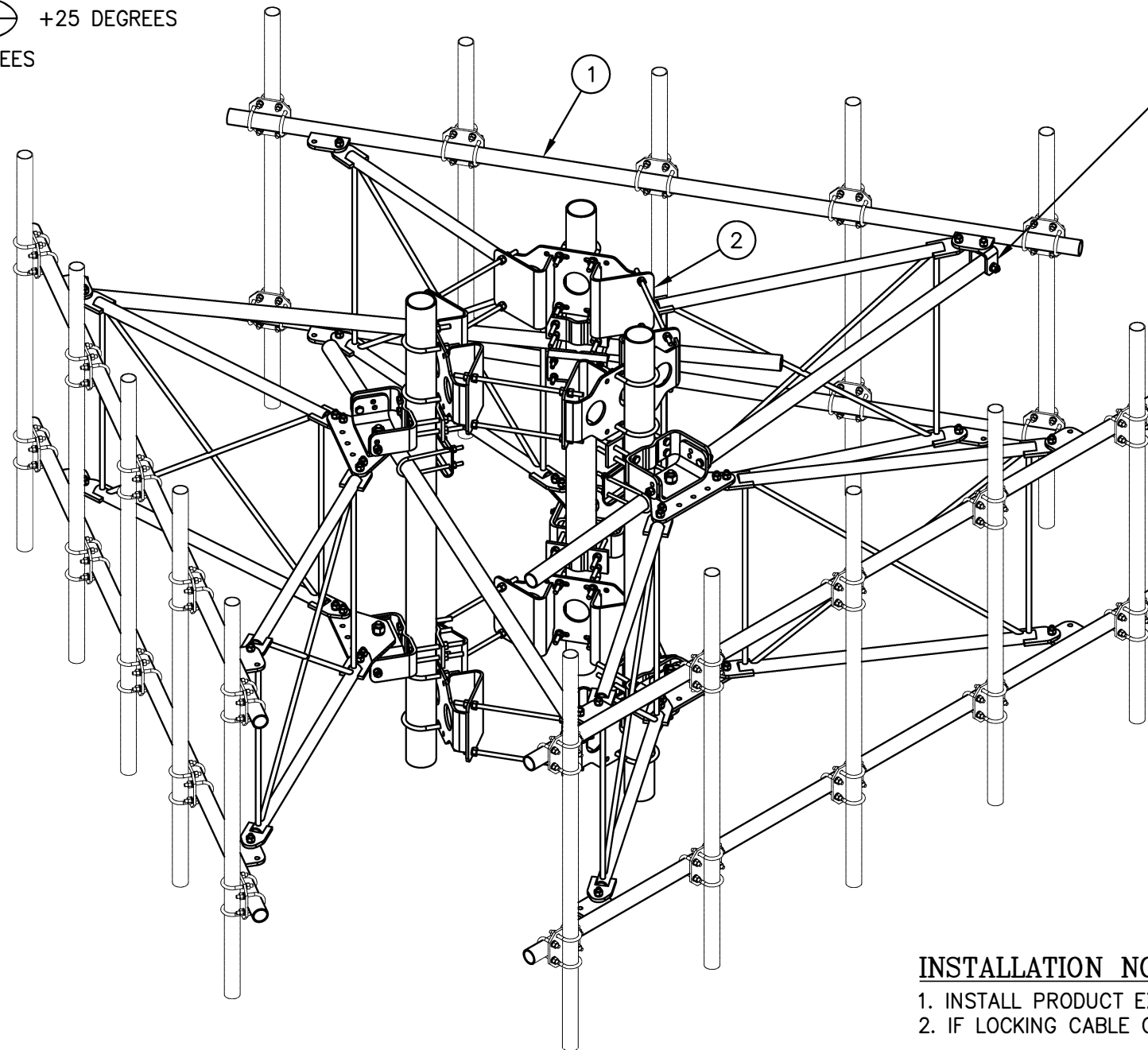


+/- 15 DEGREES VERTICAL
+/- 25 DEGREES HORIZONTAL

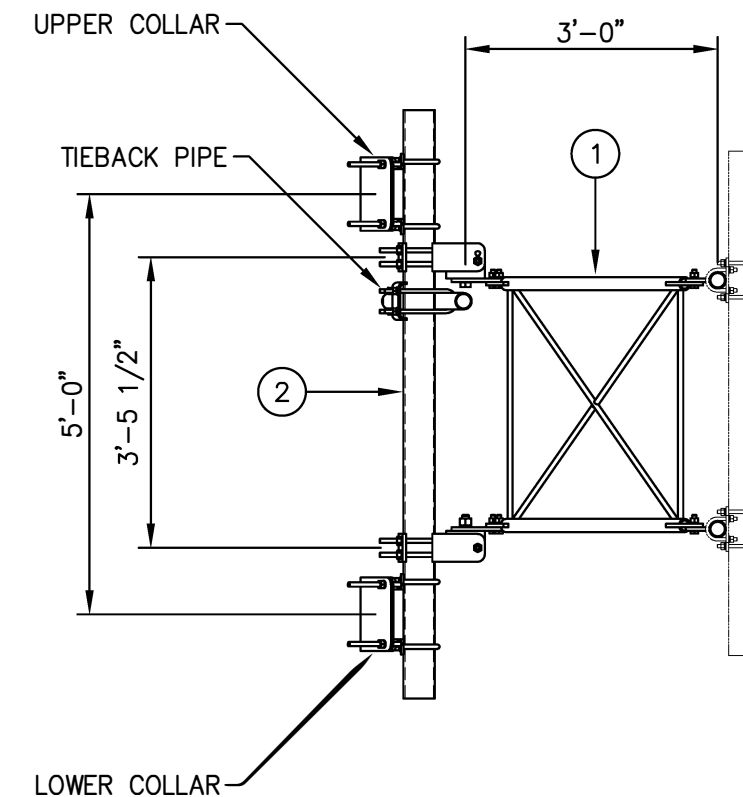
+15 DEGREES

-25 DEGREES  +25 DEGREES

-15 DEGREES



✓ SEE NOTE 5



VIEW A-A
FROM PAGE 2

INSTALLATION NOTES:

1. INSTALL PRODUCT EXACTLY AS SHOWN IN DRAWING, WITH ALL BOLTS FACING UPWARDS.
2. IF LOCKING CABLE GUIDES ARE REQUIRED THEY MUST BE PURCHASED SEPARATELY (SEE PAGE 3).

Distributed By

Rosenberger
Rosenberger Site Solutions, LLC
visit www.RosenbergerOnline.us

ISOMETRIC VIEW

NOTES:

1. SEE DRAWING C10899050 FOR INSTALLATION OF 4 1/2" O.D. MONOPOLE PIPE MOUNT ASSEMBLY.
2. SEE DRAWING C10837002C FOR INSTALLATION OF 10' V-BOOM ASSEMBLY W/TIEBACK.
3. MOUNTING PIPES & CROSSOVER PLATE KITS MUST BE PURCHASED SEPARATELY.
4. QUANTITIES SHOWN IN LIST OF MATERIAL ARE FOR A COMPLETE (3) SECTOR INSTALLATION.
5. THE TIEBACK IS SHOWN IN THIS POSITION AS A DEFAULT. THIS TIEBACK CAN BE CONNECTED AT ANY (1) OF THE (4) POSITIONS ON THE TABS ON THE FACE PIPE.

UNLESS OTHERWISE SPECIFIED ALL DIMENSIONS INCLUDE FINISHES AND ARE IN INCHES				MATERIAL:			
TOLERANCES: FRACTIONS ± 1/16" ANGLES ± 1/2 DEG. DECIMALS ± .010"				TOLERANCES DO NOT APPLY TO RAW MATERIAL			
1	07/28/20	WRF	EK	REVISED FACE PIPES			
REV	DATE	DRW	CHK	DESCRIPTION			

Sabre Industries™
Towers and Poles

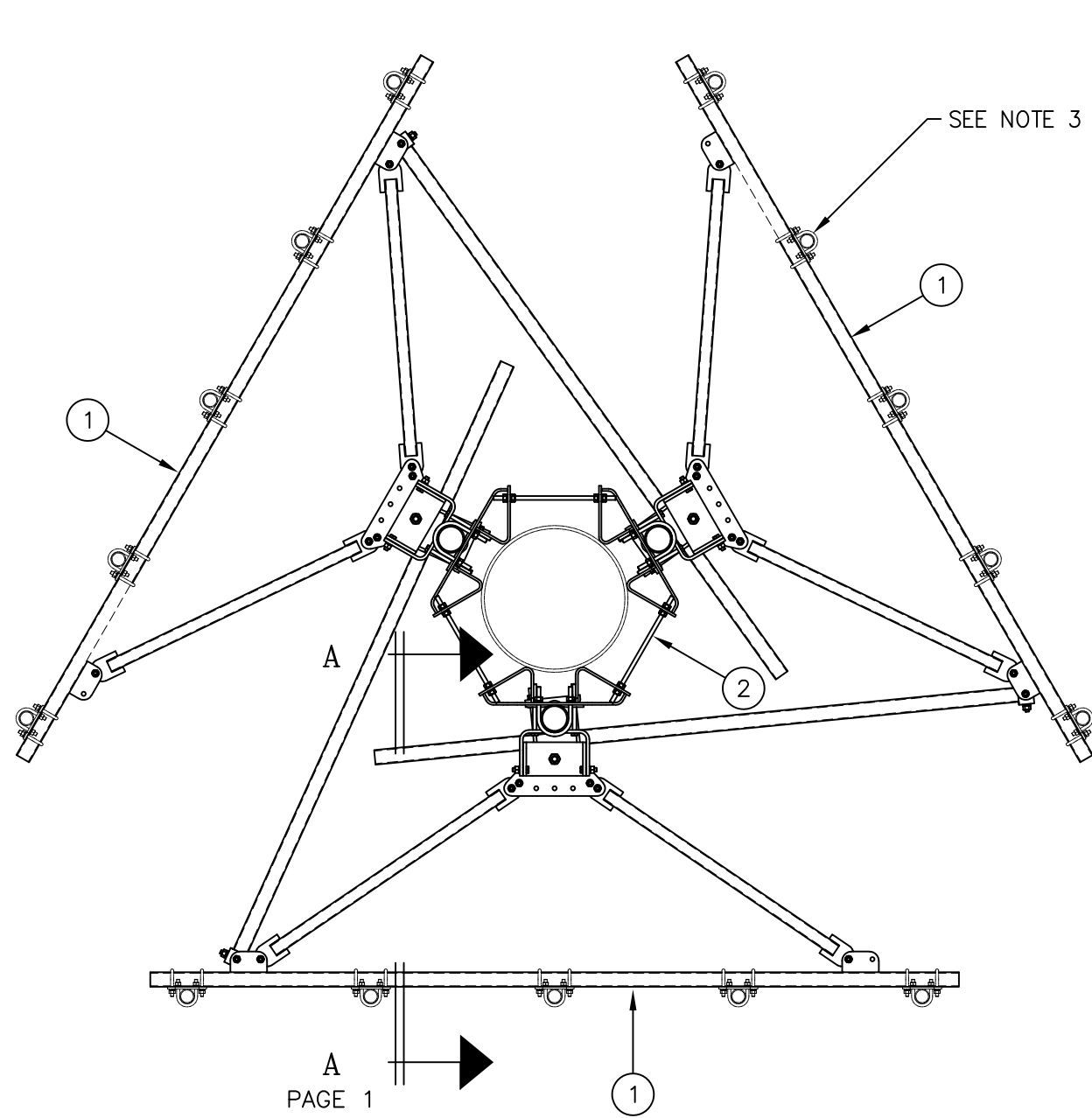
CONFIDENTIAL

This document and the information contained herein is the confidential trade secret property of Sabre Communications Corporation ("Sabre") and must not be reproduced, copied or used, in whole or in part, for any purpose without the prior written consent of Sabre.

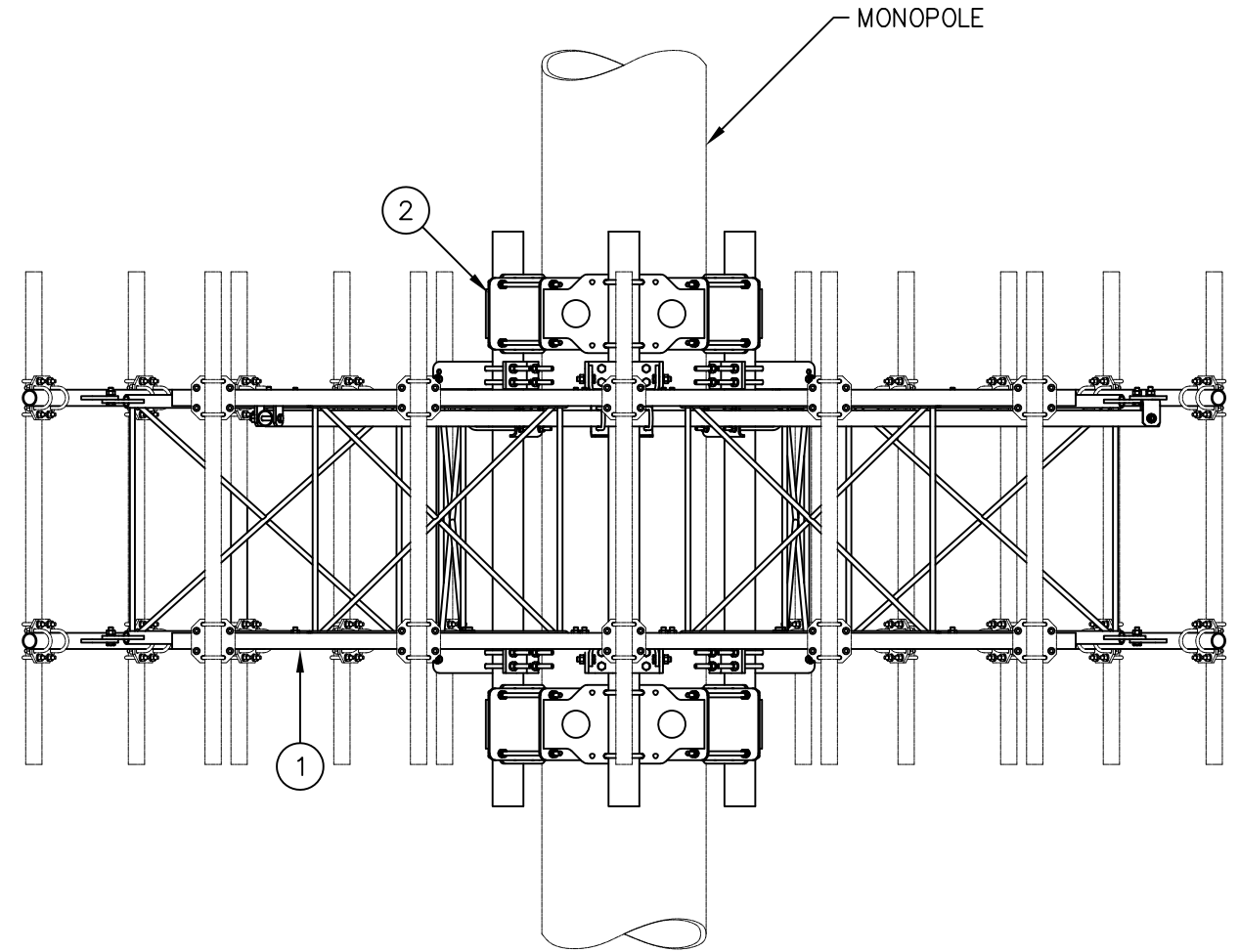
© 2020 Sabre Communications Corporation. All rights reserved.

(3) 10' THD V-BOOM ASSEMBLY W/TIEBACK (3' STANDOFF) ON MONOPOLE PIPE MOUNT ASSEMBLY W/NO ANTENNA MOUNTING PIPES
--


		SIZE B	DRAWING NO. C10837803		REV 1
DATE	07/13/20				
DRAWN BY	WRF		SCALE None	PAGE 1 OF 3	
CHECKED BY	EK				

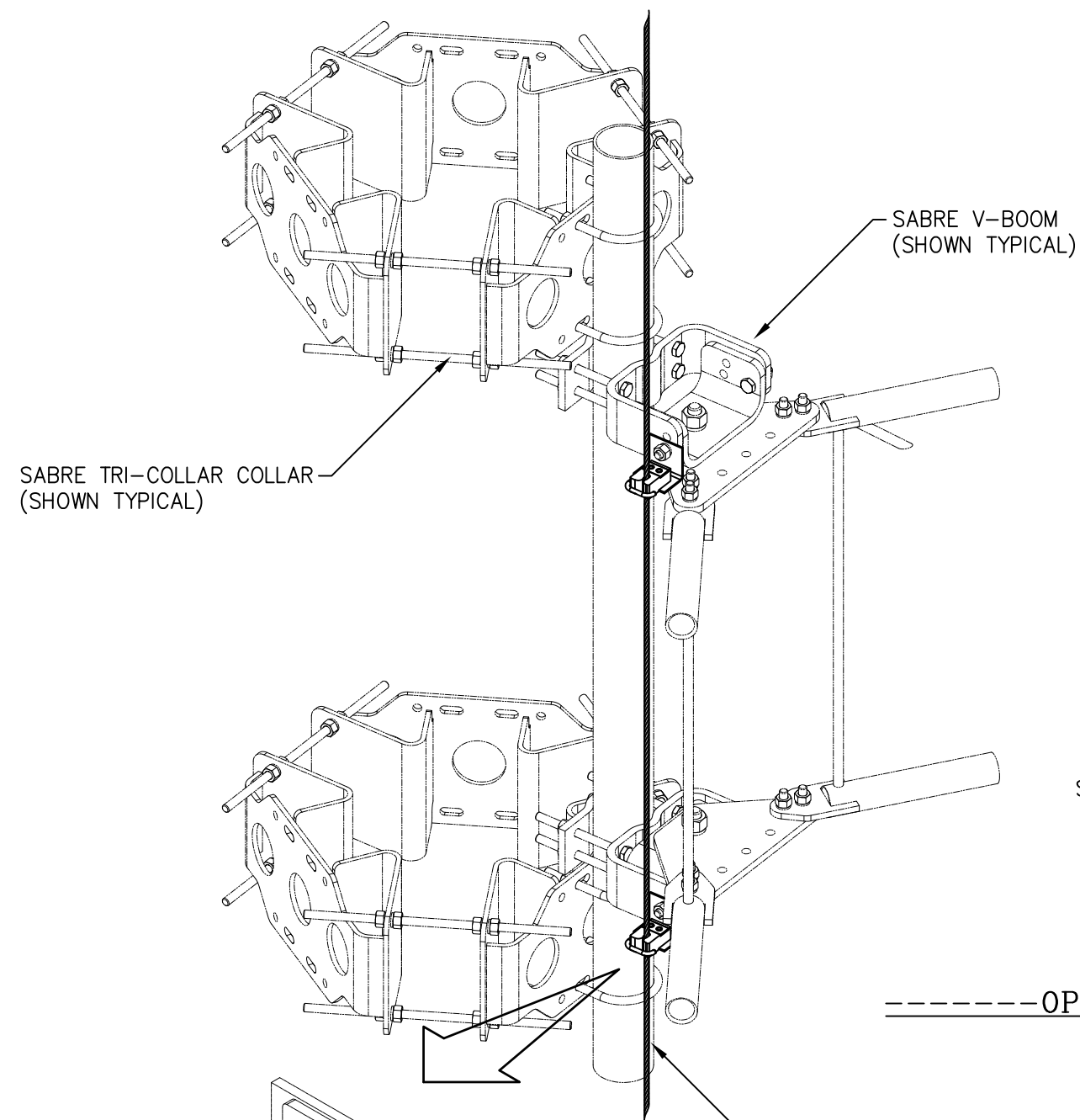


PLAN VIEW



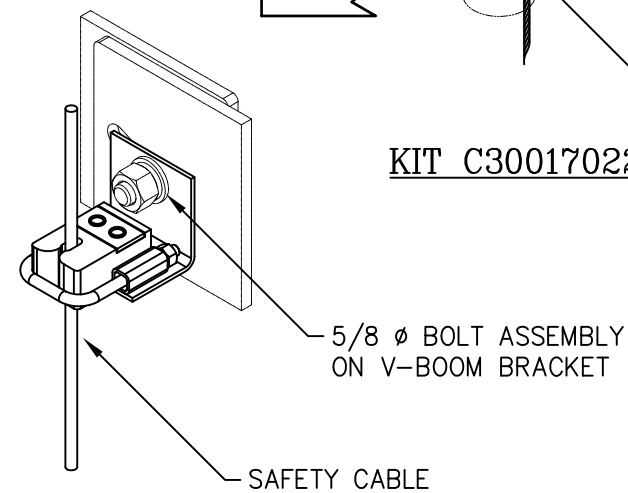
ELEVATION VIEW

UNLESS OTHERWISE SPECIFIED ALL DIMENSIONS INCLUDE FINISHES AND ARE IN INCHES				MATERIAL:			10' THD V-BOOM ASSEMBLY W/TIEBACK (3' STANDOFF) ON MONOPOLE PIPE MOUNT ASSEMBLY W/NO ANTENNA MOUNTING PIPES					
TOLERANCES: FRACTIONS ± 1/16" ANGLES ± 1/2 DEG. DECIMALS ± .010"				TOLERANCES DO NOT APPLY TO RAW MATERIAL								
						<p>CONFIDENTIAL</p> <p>This document and the information contained herein is the confidential trade secret property of Sabre Communications Corporation ("Sabre") and must not be reproduced, copied or used, in whole or in part, for any purpose without the prior written consent of Sabre.</p> <p>© 2020 Sabre Communications Corporation. All rights reserved.</p>			SIZE	DRAWING NO.		REV
							DATE	07/13/20	B	C10837803		1
							DRAWN BY	WRF				
							CHECKED BY	EK			SCALE	PAGE
											None	2 OF 3
1	07/28/20	WRF	EK	REVISED FACE PIPES								
REV	DATE	DRW	CHK	DESCRIPTION								



- SAFETY CABLE

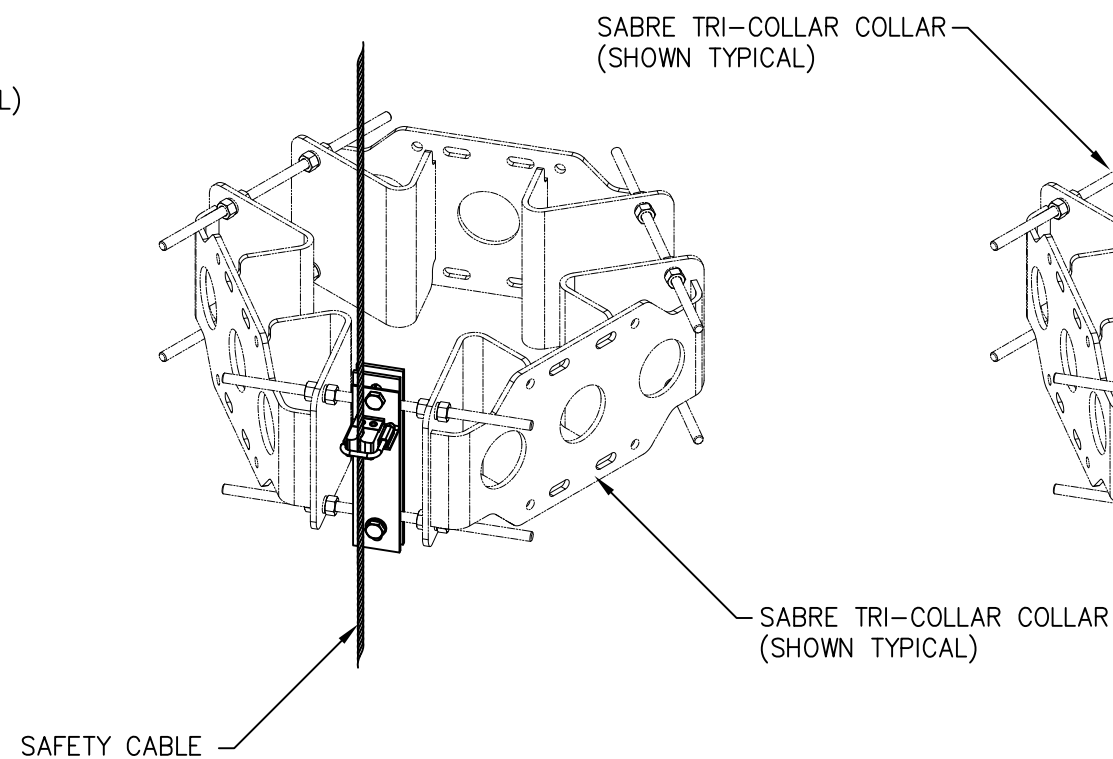
KIT C30017022



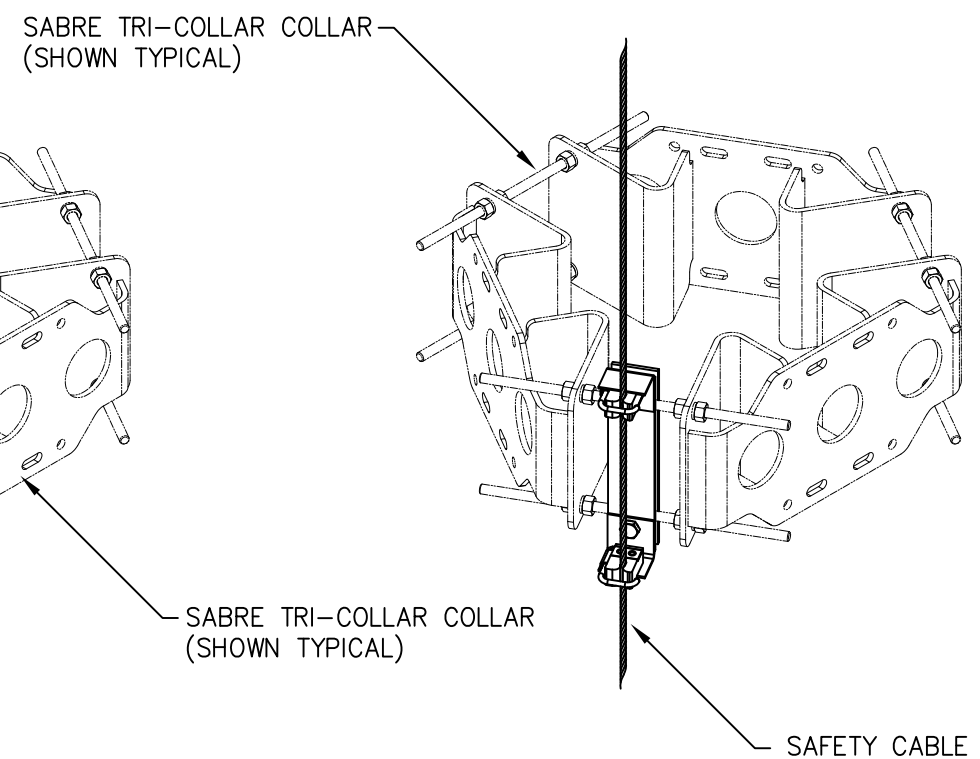
— SAFETY CABLE

— 5/8 Ø BOLT ASSEMBLY
ON V-BOOM BRACKET

-----OPTIONAL CABLE GUIDE MOUNTING OPTIONS -----



KIT C30017031




KIT C30017032

OPTIONAL LOCKING CABLE GUIDE

IF REQUIRED PLEASE ORDER THE APPROPRIATE KIT BELOW TO FIT YOUR INDIVIDUAL FIELD NEEDS.

NOTE

OTHER ADDITIONAL CABLE GUIDE SUPPORTS MAY BE REQUIRED ABOVE AND BELOW V-BOOM SO THAT CABLE ALIGNMENT IS WITHIN REQUIRED LIMITS.

UNLESS OTHERWISE SPECIFIED ALL DIMENSIONS INCLUDE FINISHES AND ARE IN INCHES				MATERIAL:				10' THD V-BOOM ASSEMBLY W/TIEBACK (3' STANDOFF) ON MONOPOLE PIPE MOUNT ASSEMBLY W/NO ANTENNA MOUNTING PIPES					
TOLERANCES: FRACTIONS ± 1/16" ANGLES ± 1/2 DEG. DECIMALS ± .010"				TOLERANCES DO NOT APPLY TO RAW MATERIAL									
						<p>CONFIDENTIAL</p> <p>This document and the information contained herein is the confidential trade secret property of Sabre Communications Corporation ("Sabre") and must not be reproduced, copied or used, in whole or in part, for any purpose without the prior written consent of Sabre.</p> <p>© 2020 Sabre Communications Corporation. All rights reserved.</p>				SIZE	DRAWING NO.	REV	
								DATE	07/13/20	B	C10837803	1	
								DRAWN BY	WRF			SCALE	PAGE
								CHECKED BY	EK			None	3 OF 3
1	07/28/20	WRF	EK	REVISED FACE PIPES									
REV	DATE	DRW	CHK	DESCRIPTION									