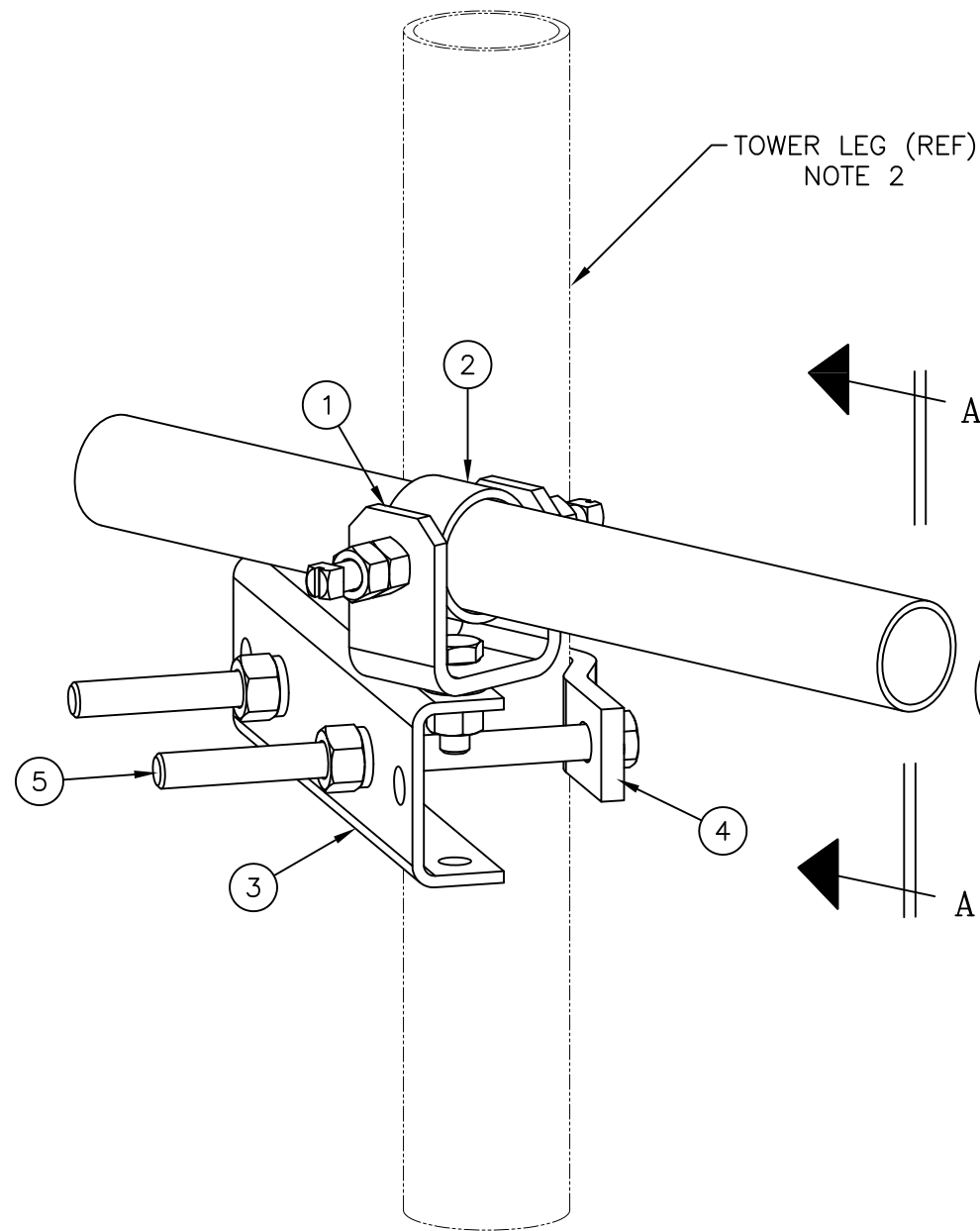


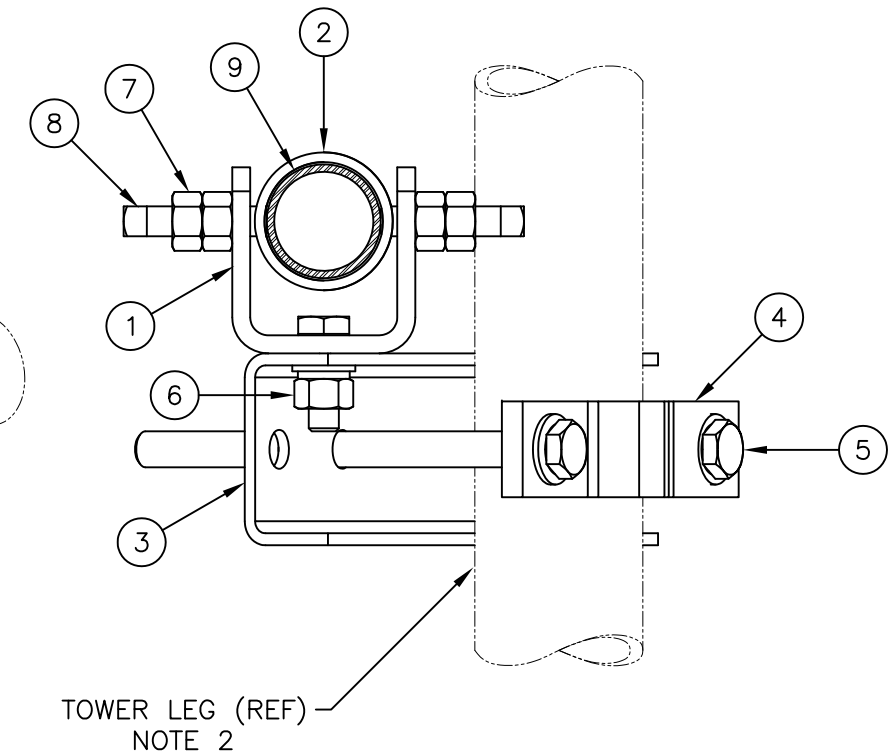
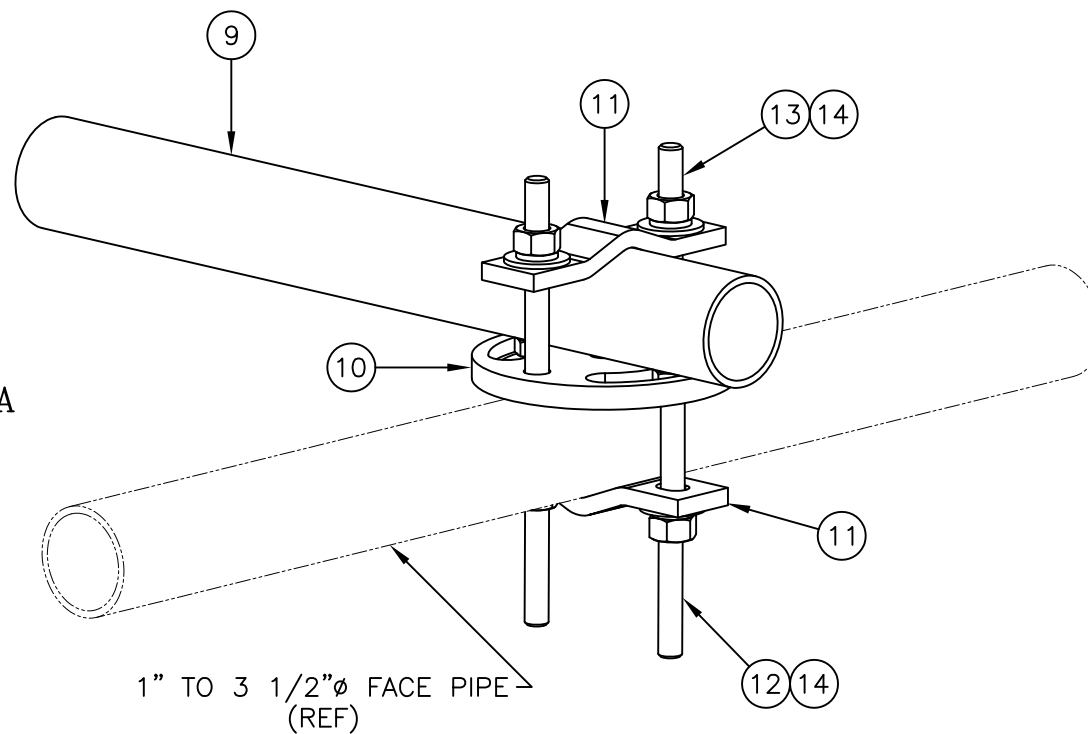


NOTES:

1. QUANTITIES SHOWN IN LISTS OF MATERIAL ARE FOR ONE (1) UNIVERSAL TIBACK ONLY.
2. THIS SWIVEL KNUCKLE TIEBACK KIT WILL MOUNT TO THE FOLLOWING:
  - 1 1/2"Ø TO 5 9/16"Ø ROUND LEG
  - L 2 1/2 X 2 1/2 TO L 4 X 4 ANGLE LEG



ISOMETRIC VIEW



SECTION A-A

C10179250 12'-6" UNIVERSAL TIEBACK (DISC)				
ITEM	QTY.	PART NO.	DESCRIPTION	WEIGHT LBS
1.	1	CW00013	SWIVEL PLATE WELDMENT	3
2.	1	CS00097	PIPE, SLEEVE 2 7/8 O.D. X .203 X 0'-1 3/4	1
3.	1	CS01360	PLATE, MOUNTING BRACKET (FORMED CHANNEL)	9
4.	1	CS01361	PLATE, 2 HOLE ADAPTER CLAMP	3
5.	2	C40140001	BOLT ASSEMBLY, 3/4 Ø X 10 A307	4
6.	1	C40026023	BOLT ASSEMBLY, 5/8 Ø X 2 A325	1
7.	2	C40042007	HEX NUT, 5/8 A194 GRADE 2H	1
8.	2	C40998007	SQ. HEAD SET SCREW, 5/8 X 2 1/2	1
9.	1	C10901229	PIPE, 2 3/8 O.D. X .154 X 12'-6	47
10.	1	CS03391	PLATE, CLAMP (DISC)	2
11.	2	CS02648	PLATE, BACKUP	2
12.	2	C40024106	BOLT ASSEMBLY, 1/2 Ø X 6 1/2 GR 5 (FULL THREAD)	1
13.	2	C40024113	BOLT ASSEMBLY, 1/2 Ø X 4 GR 5 (FULL THREAD)	1
14.	4	C40031002	FLATWASHER, 1/2 Ø HARDENED ASTM F436	1
TOTAL WEIGHT				77

UNLESS OTHERWISE SPECIFIED  
ALL DIMENSIONS INCLUDE  
FINISHES AND ARE IN INCHES  
TOLERANCES: FRACTIONS  $\pm 1/16"$   
ANGLES  $\pm 1/2$  DEG.  
DECIMALS  $\pm .010"$

MATERIAL:  
TOLERANCES DO NOT APPLY  
TO RAW MATERIAL

**Sabre Industries™**  
Towers and Poles

**CONFIDENTIAL**  
This document and the information  
contained herein is the confidential trade  
secret property of Sabre Communications  
Corporation ("Sabre") and must not be  
reproduced, copied or used, in whole or in  
part, for any purpose without the prior  
written consent of Sabre.  
© 2017 Sabre Communications Corporation.  
All rights reserved.

UNIVERSAL TIEBACK  
2 3/8" O.D. X 12'-6" PIPE  
(DISC)

REV	DATE	DRW/CHK	DESCRIPTION

DATE		03/13/17	SIZE	DRAWING NO.	REV
DRAWN BY		WRF	B	C10179250	0
CHECKED BY		KLE		SCALE None	PAGE 1 OF 1