

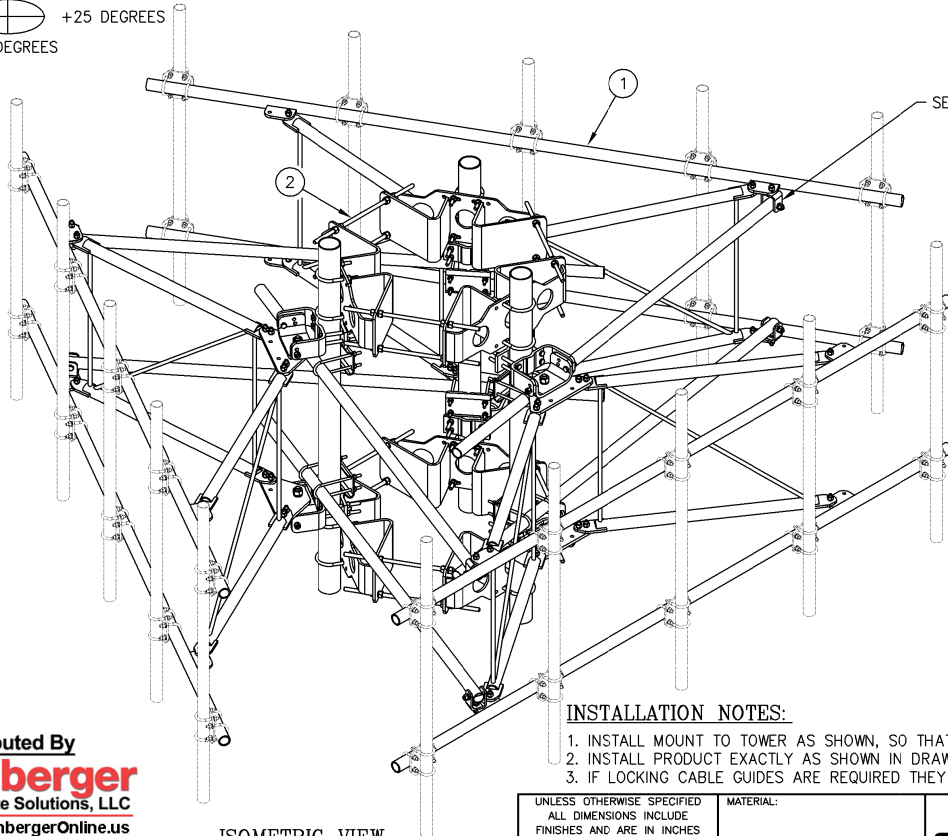
# TIEBACK ANGLE RANGE DETAIL

+/- 15 DEGREES VERTICAL  
+/- 25 DEGREES HORIZONTAL

+15 DEGREES

-25 DEGREES

-15 DEGREES

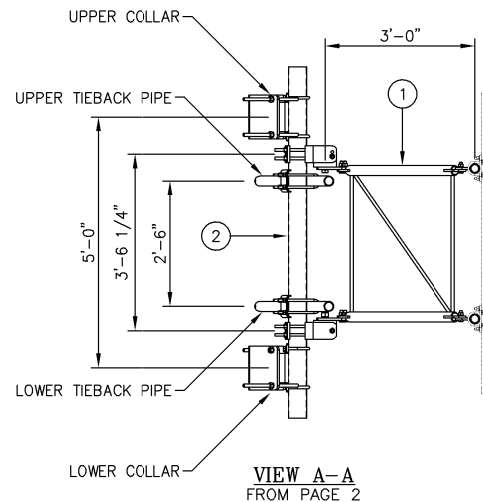


ISOMETRIC VIEW

## INSTALLATION NOTES:

1. INSTALL MOUNT TO TOWER AS SHOWN, SO THAT WELDED STANDOFF DIAGONAL IS SLOPING DOWNWARD FROM TOWER END TO FACE PIPE END.
2. INSTALL PRODUCT EXACTLY AS SHOWN IN DRAWING, WITH ALL BOLTS FACING UPWARDS.
3. IF LOCKING CABLE GUIDES ARE REQUIRED THEY MUST BE PURCHASED SEPARATELY (SEE PAGE 3).

C10857804 12' EHD V-BOOM ASSEMBLIES W/TIEBACKS				
ITEM	QTY.	PART NO.	DESCRIPTION	WEIGHT
1.	3	C10857007C	12' EHD V-BOOM ASSEMBLY W/TIE BACKS	1533
2.	1	C10899055	4 1/2" O.D. MONOPOLE PIPE MOUNT ASSEMBLY	994
TOTAL WEIGHT				2527



VIEW A-A  
FROM PAGE 2

Distributed By

**Rosenberger**  
Rosenberger Site Solutions, LLC  
visit [www.RosenbergerOnline.us](http://www.RosenbergerOnline.us)

## NOTES:

1. SEE DRAWING C10899055 FOR INSTALLATION OF 4 1/2" O.D. MONOPOLE PIPE MOUNT ASSEMBLY.
2. SEE DRAWING C10857007C FOR INSTALLATION OF 12' V-BOOM ASSEMBLY W/TIEBACK.
3. MOUNTING PIPES & CROSSOVER PLATE KITS MUST BE PURCHASED SEPARATELY.
4. QUANTITIES SHOWN IN LIST OF MATERIAL ARE FOR A COMPLETE (3) SECTOR INSTALLATION.
5. THE TIEBACK IS SHOWN IN THIS POSITION AS A DEFAULT. THIS TIEBACK CAN BE CONNECTED AT ANY (2) OF THE (4) POSITIONS ON THE TABS ON THE FACE PIPE.

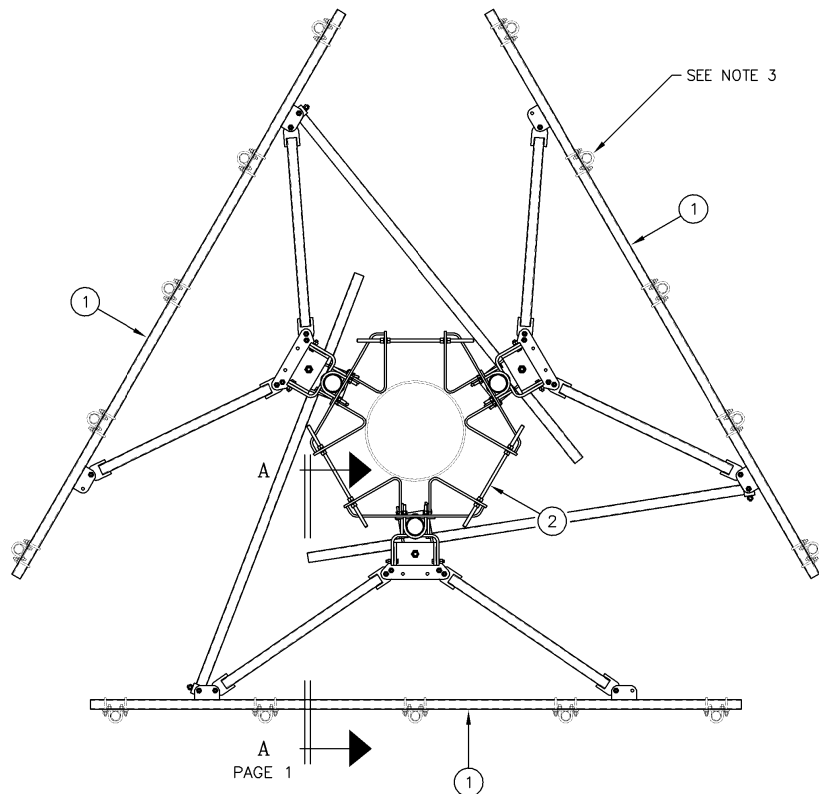
UNLESS OTHERWISE SPECIFIED ALL DIMENSIONS INCLUDE FINISHES AND ARE IN INCHES				MATERIAL:	
TOLERANCES: FRACTIONS $\pm 1/16"$ ANGLES $\pm 1/2$ DEG. DECIMALS $\pm .010"$				TOLERANCES DO NOT APPLY TO RAW MATERIAL	
REV	DATE	DRW/CHK	DESCRIPTION		
1	05/04/20	WRF/EK	UPDATED TO CURRENT STANDARDS ADDED INSTALLATION NOTES AND ADDED PAGE 3		

**Sabre Industries**  
Towers and Poles

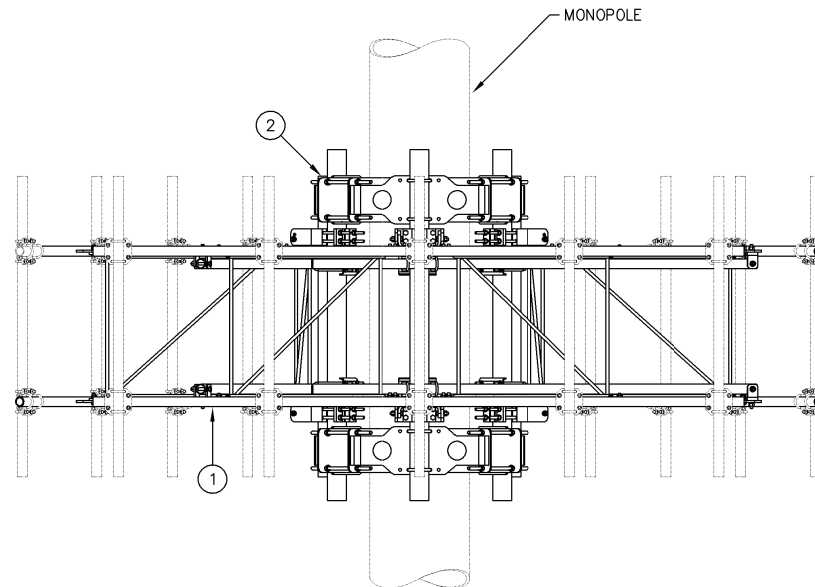
**CONFIDENTIAL**  
This document and the information contained herein is the confidential trade secret property of Sabre Communications Corporation ("Sabre") and must not be reproduced, copied or used, in whole or in part, for any purpose without the prior written consent of Sabre.  
© 2018 Sabre Communications Corporation. All rights reserved.

12' EHD V-BOOM ASSEMBLIES W/TIEBACKS  
(3' STANDOFF)  
ON MONOPOLE PIPE MOUNT ASSEMBLY  
W/NO ANTENNA MOUNTING PIPES

DATE		SIZE	DRAWING NO.	REV
9/24/18		B	C10857804	1
DRAWN BY		SCALE		PAGE
WRF		None		1 OF 3
CHECKED BY				
WMN				



PLAN VIEW



ELEVATION VIEW

Distributed By  
**Rosenberger**  
 Rosenberger Site Solutions, LLC  
 visit [www.RosenbergerOnline.us](http://www.RosenbergerOnline.us)

UNLESS OTHERWISE SPECIFIED  
 ALL DIMENSIONS INCLUDE  
 FINISHES AND ARE IN INCHES

TOLERANCES: FRACTIONS  $\pm 1/16"$   
 ANGLES  $\pm 1/2$  DEG.  
 DECIMALS  $\pm .010"$

MATERIAL:

TOLERANCES DO NOT APPLY  
 TO RAW MATERIAL

REV	DATE	DRW	CHK	DESCRIPTION
1	05/04/20	WRF	EK	UPDATED TO CURRENT STANDARDS ADDED INSTALLATION NOTES AND ADDED PAGE 3

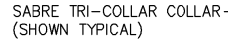
**Sabre Industries™**  
 Towers and Poles

**CONFIDENTIAL**  
 This document and the information  
 contained herein is the confidential trade  
 secret property of Sabre Communications  
 Corporation ("Sabre") and must not be  
 reproduced, copied or used, in whole or in  
 part, for any purpose without the prior  
 written consent of Sabre.  
 © 2018 Sabre Communications Corporation.  
 All rights reserved.

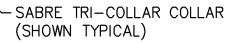
12' EHD V-BOOM ASSEMBLIES W/TIEBACKS  
 (3' STANDOFF)  
 ON MONOPOLE PIPE MOUNT ASSEMBLY  
 W/NO ANTENNA MOUNTING PIPES

DATE	09/24/18	SIZE	B	DRAWING NO.	C10857804	REV	1
DRAWN BY	WRF	SCALE	None	PAGE	2	OF	3
CHECKED BY	WMN						

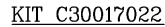
IF REQUIRED PLEASE ORDER THE APPROPRIATE KIT BELOW TO FIT YOUR INDIVIDUAL FIELD NEEDS.



— SABRE V-BOOM  
(SHOWN TYPICAL)

KIT C30017031KIT C30017032

## -OPTIONAL CABLE GUIDE MOUNTING OPTIONS




— 5/8  $\phi$  BOLT ASSEMBLY  
ON V-BOOM BRACKET

– SAFETY CABLE

**Rosenberger**  
Rosenberger Site Solutions, LLC  
visit [www.RosenbergerOnline.us](http://www.RosenbergerOnline.us)

OTHER ADDITIONAL CABLE GUIDE SUPPORTS MAY  
BE REQUIRED ABOVE AND BELOW V-BOOM SO  
THAT CABLE ALIGNMENT IS WITHIN REQUIRED LIMITS.

UNLESS OTHERWISE SPECIFIED ALL DIMENSIONS INCLUDE FINISHES AND ARE IN INCHES				MATERIAL:		<div> Towers and Poles</div>	12' EHD V-BOOM ASSEMBLIES W/TIEBACKS (3' STANDOFF) ON MONOPOLE PIPE MOUNT ASSEMBLY W/NO ANTENNA MOUNTING PIPES			
TOLERANCES: FRACTIONS ± 1/16"				TOLERANCES DO NOT APPLY TO RAW MATERIAL						
ANGLES ± 1/2 DEG.										
DECIMALS ± .010"										
						CONFIDENTIAL				
						This document and the information contained herein is the confidential trade secret property of Sabre Communications Corporation ("Sabre") and must not be reproduced, copied or used, in whole or in part, without the prior written consent of Sabre.				
						© 2018 Sabre Communications Corporation. All rights reserved.				
1	05/04/20	WRF	EK	UPDATED TO CURRENT STANDARDS						
				ADDED INSTALLATION NOTES AND ADDED PAGE 3						
REV	DATE	DRW	CHK	DESCRIPTION						
						<div><div>DATE09/24/18</div><div>DRAWN BYWRF</div><div>CHECKED BYWMN</div></div> <div><div>SIZEB</div><div>DRAWING NO.C10857804</div><div>PAGE3 OF 3</div></div> <div><div>SCALENone</div></div>				