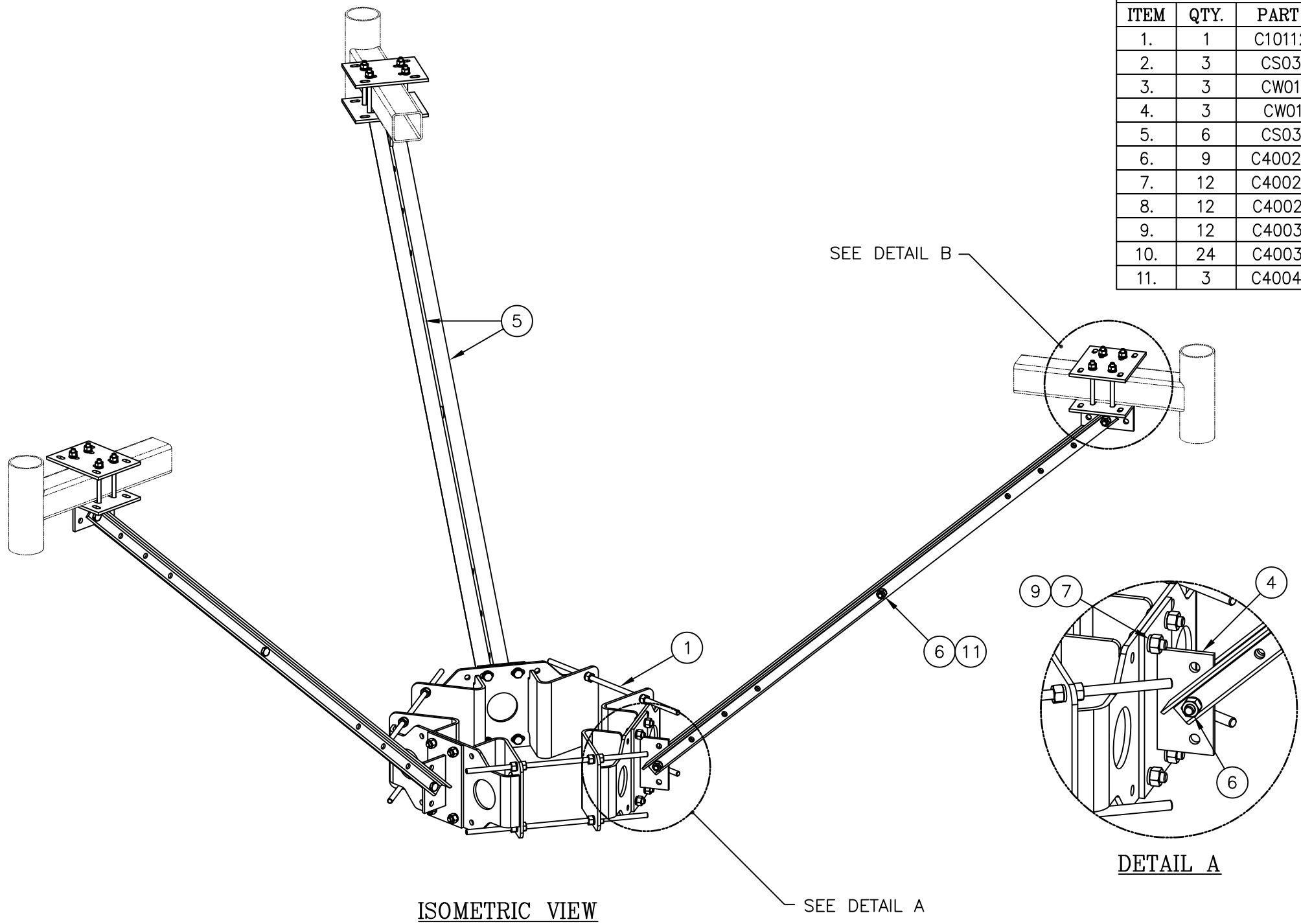


C10851202 PLATFORM REINFORCEMENT KIT				
ITEM	QTY.	PART NO.	DESCRIPTION	WEIGHT
1.	1	C10112377	TRI COLLAR BRACKET ASSEMBLY	208
2.	3	CS03354	PLATE, UPPER CONNECTION	22
3.	3	CW01322	WELDMENT, KICKER SUPPORT	31
4.	3	CW01291	WELDMENT, KICKER SUPPORT	32
5.	6	CS03278	ANGLE, KICKER	139
6.	9	C40026024	BOLT ASSEMBLY, 5/8 ø X 2 1/4 A325	5
7.	12	C40026023	BOLT ASSEMBLY, 5/8 ø X 2 A325	6
8.	12	C40024106	BOLT ASSEMBLY, 1/2 ø X 6 1/2 GR5 FULL THD	5
9.	12	C40031003	FLATWASHER, 5/8 ø HARDENED ASTM F436	1
10.	24	C40031002	FLATWASHER, 1/2 ø HARDENED ASTM F436	1
11.	3	C40047003	RINGFILL, 3/8 THICK – 5/8 ø BOLT	1
TOTAL WEIGHT				451




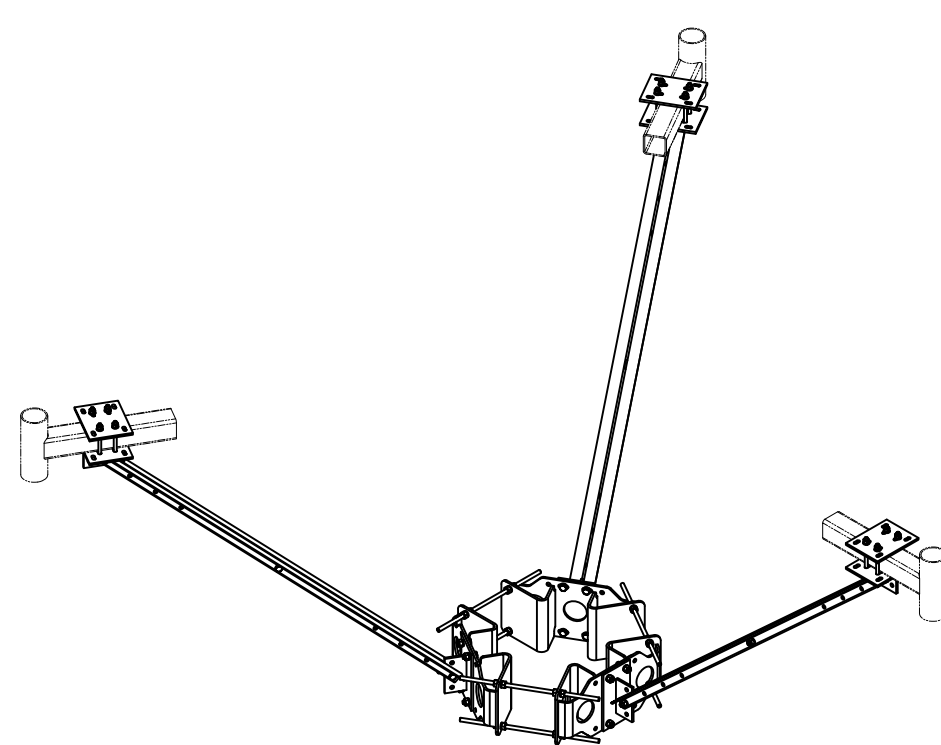
ISOMETRIC VIEW

DETAIL A

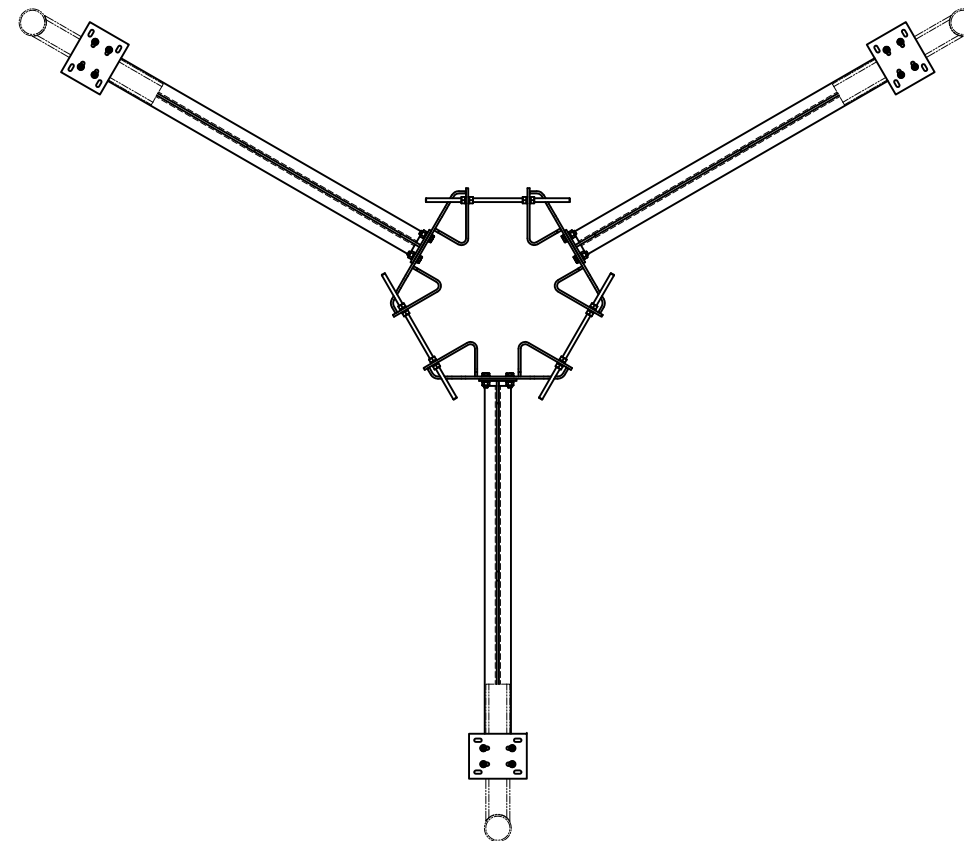
DETAIL B

Distributed By
Rosenberger
Rosenberger Site Solutions, LLC
visit www.RosenbergerOnline.us

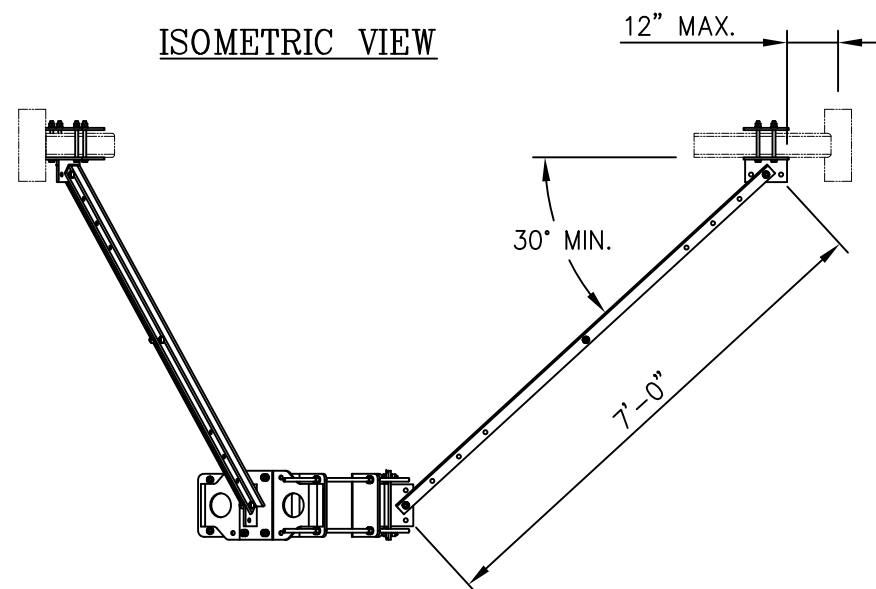
UNLESS OTHERWISE SPECIFIED ALL DIMENSIONS INCLUDE FINISHES AND ARE IN INCHES				MATERIAL:			PLATFORM REINFORCEMENT KIT (LONG) FOR 10" TO 40" DIA. POLES					
TOLERANCES: FRACTIONS ± 1/16" ANGLES ± 1/2 DEG. DECIMALS ± .010"				TOLERANCES DO NOT APPLY TO RAW MATERIAL								
						<p>CONFIDENTIAL</p> <p>This document and the information contained herein is the confidential trade secret property of Sabre Communications Corporation ("Sabre") and must not be reproduced, copied or used, in whole or in part, for any purpose without the prior written consent of Sabre.</p> <p>© 2015 Sabre Communications Corporation. All rights reserved.</p>			SIZE	DRAWING NO.		REV
							DATE	07/23/15	B	C10851202	2	
							DRAWN BY	WRF				
							CHECKED BY	KLE			SCALE	PAGE
											None	1 OF 2
2	02/13/17	KLE	EK	ADDED STITCH BOLTS AND RINGFILLS CHANGED COLLAR (WAS C10112300)								
1	02/18/16	WRF	KLE	CHANGED ITEMS 2 AND 3								
REV	DATE	DRW	CHK	DESCRIPTION								



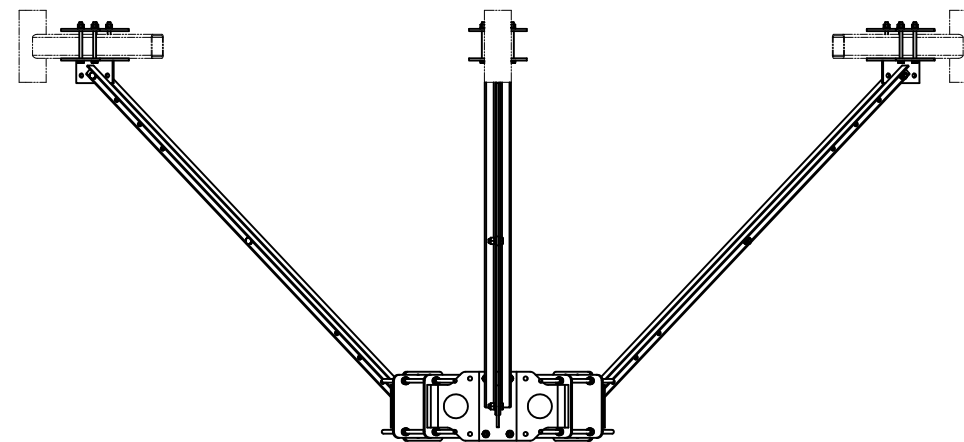
ISOMETRIC VIEW



TOP VIEW



SIDE VIEW



FRONT VIEW

UNLESS OTHERWISE SPECIFIED
ALL DIMENSIONS INCLUDE
FINISHES AND ARE IN INCHES
TOLERANCES: FRACTIONS $\pm 1/16"$
ANGLES $\pm 1/2$ DEG.
DECIMALS $\pm .010"$

MATERIAL:
TOLERANCES DO NOT APPLY
TO RAW MATERIAL



CONFIDENTIAL
This document and the information
contained herein is the confidential trade
secret property of Sabre Communications
Corporation ("Sabre") and must not be
reproduced, copied or used, in whole or in
part, for any purpose without the prior
written consent of Sabre.
© 2015 Sabre Communications Corporation.
All rights reserved.

PLATFORM REINFORCEMENT KIT (LONG)
FOR 10" TO 40" DIA. POLES

REV	DATE	DRW	CHK	DESCRIPTION
2	02/13/17	KLE	EK	ADDED STITCH BOLTS AND RINGFILLS CHANGED COLLAR (WASC10112300)
1	02/18/16	WRF	KLE	CHANGED ITEMS 2 AND 3

		SIZE B	DRAWING NO.		REV 2
DATE	07/23/15		C10851202		
DRAWN BY	WRF				
CHECKED BY	KLE		SCALE	PAGE	
			None	2 OF 2	