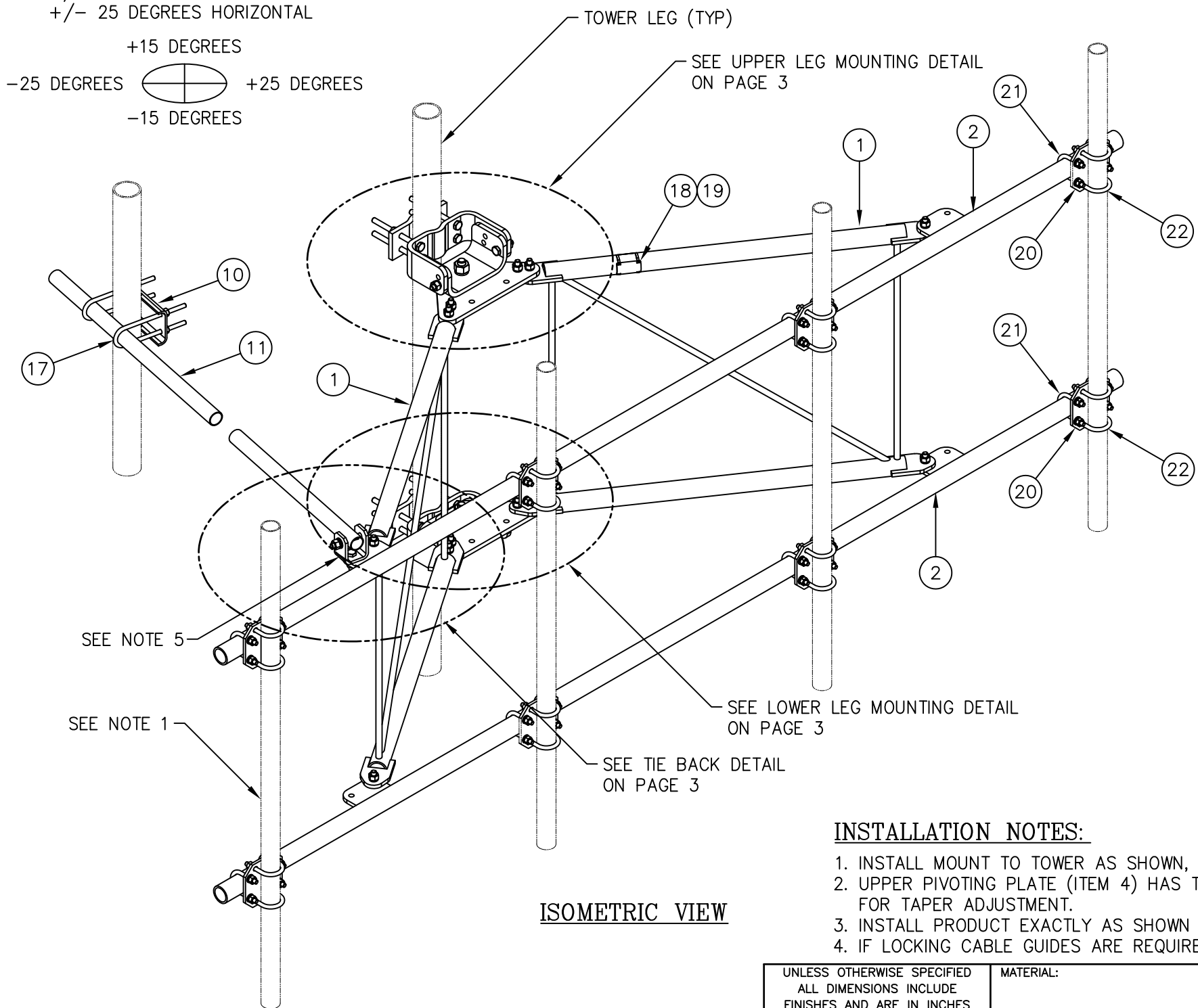
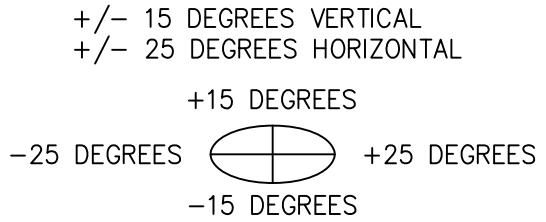


TIEBACK ANGLE RANGE DETAIL



ISOMETRIC VIEW

NOTES:

1. 2 7/8" O.D. MOUNTING PIPES MUST BE PURCHASED SEPARATELY.
2. QUANTITIES SHOWN IN LISTS OF MATERIAL ARE FOR ONE (1) V-BOOM ONLY.
3. THIS V-BOOM WILL MOUNT TO THE FOLLOWING: 1 1/2"Ø TO 5 9/16"Ø ROUND LEG.
4. TIEBACK MUST BE CONNECTED TO A RIGID MEMBER THAT PROVIDES ADEQUATE SUPPORT WITHIN THE LIMITS NOTED ABOVE IN THE TIEBACK ANGLE RANGE DETAIL UNLESS APPROVED BY THE ENGINEER OF RECORD.
5. THE TIEBACK IS SHOWN IN THIS POSITION AS A DEFAULT. THIS TIEBACK CAN BE CONNECTED AT ANY (1) OF THE (4) POSITIONS ON THE TABS ON THE FACE PIPE.

C10857333C 14' HD V-BOOM ASSEMBLY W/TIEBACK

ITEM	QTY.	PART NO.	DESCRIPTION	WEIGHT
1.	2	CW01222	WELDMENT, STANDOFF ARM	126
2.	2	CW01249	WELDMENT, FACE PIPE	168
3.	2	CS03109	PLATE, ROTATING	34
4.	1	CS03110	PLATE, PIVOTING (UPPER)	16
5.	1	CS03111	PLATE, LEG CLAMP (UPPER)	17
6.	1	CS03112	PLATE, PIVOTING (LOWER)	14
7.	1	CS03113	PLATE, LEG CLAMP (LOWER)	17
8.	2	CS03114	PLATE, LEG CLAMP (BACK)	14
9.	1	CS00098	PLATE, TIE BACK SWIVEL	3
10.	1	CS03285	PLATE, TIE BACK CLAMP	4
11.	1	CS03333	PIPE, TIE BACK	38
12.	2	C40026073	BOLT ASSEMBLY, 1 Ø X 3 A325	4
13.	8	C40140004	BOLT ASSEMBLY, 5/8 Ø X 8 A307	13
14.	1	C40026033	BOLT ASSEMBLY, 5/8 Ø X 4 1/2 A325	1
15.	12	C40026025	BOLT ASSEMBLY, 5/8 Ø X 2 1/2 A325	6
16.	5	C40026024	BOLT ASSEMBLY, 5/8 Ø X 2 1/4 A325	3
17.	2	C40034183	U-BOLT ASSEMBLY, 1/2 Ø X 2 15/16 C-C	3
18.	1	Z30992020	MOUNT CLASSIFICATION TAG C10857003C	1
19.	2	C40062103	STAINLESS STEEL SELF-LOCKING CABLE TIE	1
20.	8	CS03116	CROSSOVER PLATE (2 3/8-2 7/8 PIPE)	34
21.	16	C40034139	U-BOLT ASSEMBLY, 1/2 Ø X 2 15/16 C-C	13
22.	16	C40034140	U-BOLT ASSEMBLY, 1/2 Ø X 3 7/16 C-C	14
TOTAL WEIGHT				544

PACKAGING NOTE

CK00386 INCLUDES ITEMS 1, 3, 4, 5, 6, 7, 12 & 15 (8 QTY)
CK00404-HDW INCLUDES ITEMS 8, 9, 10, 13, 14, 15 (4 QTY), 16, 17, 18 & 19
CK00404-STL INCLUDES ITEMS 2 & 11

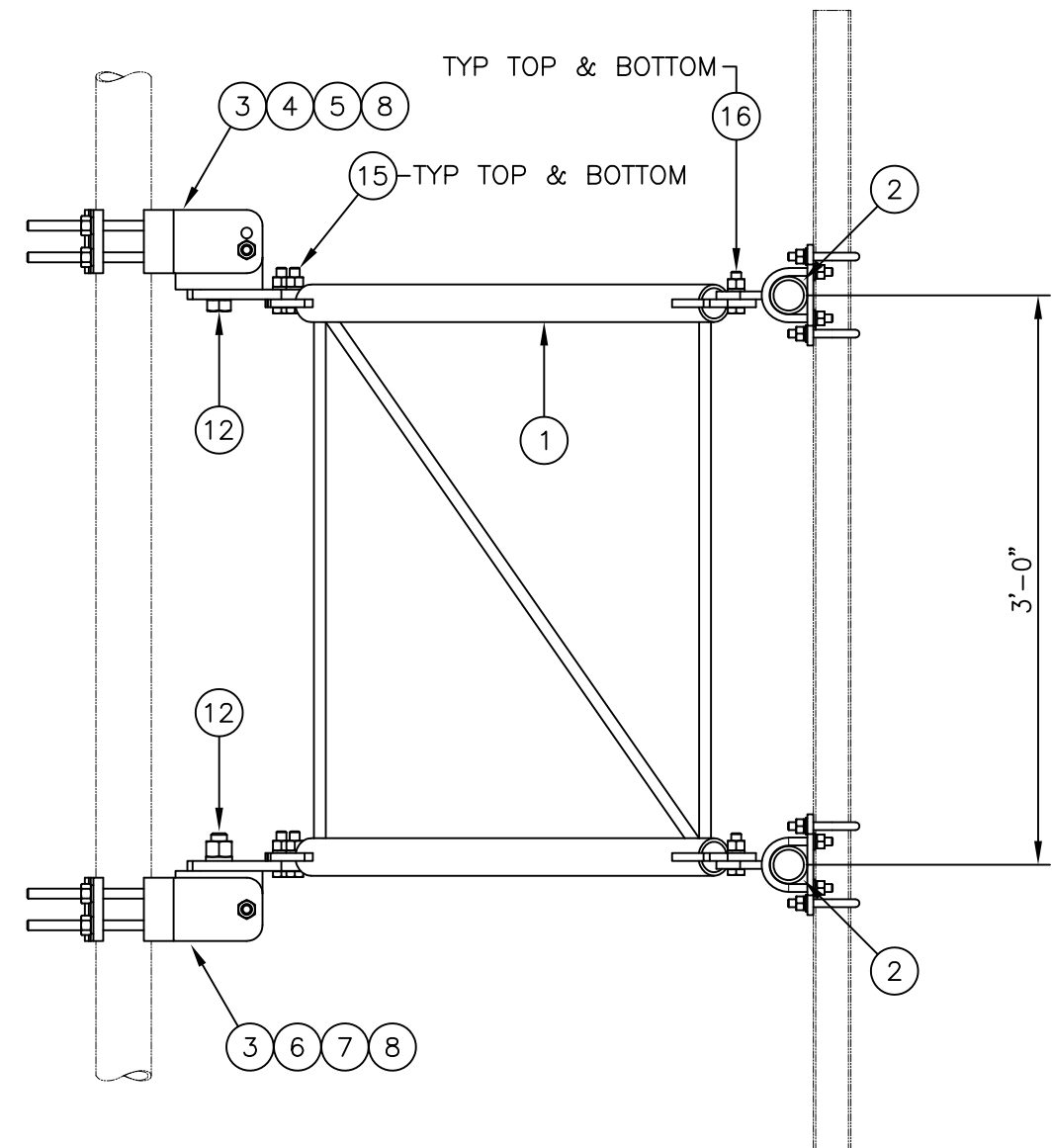
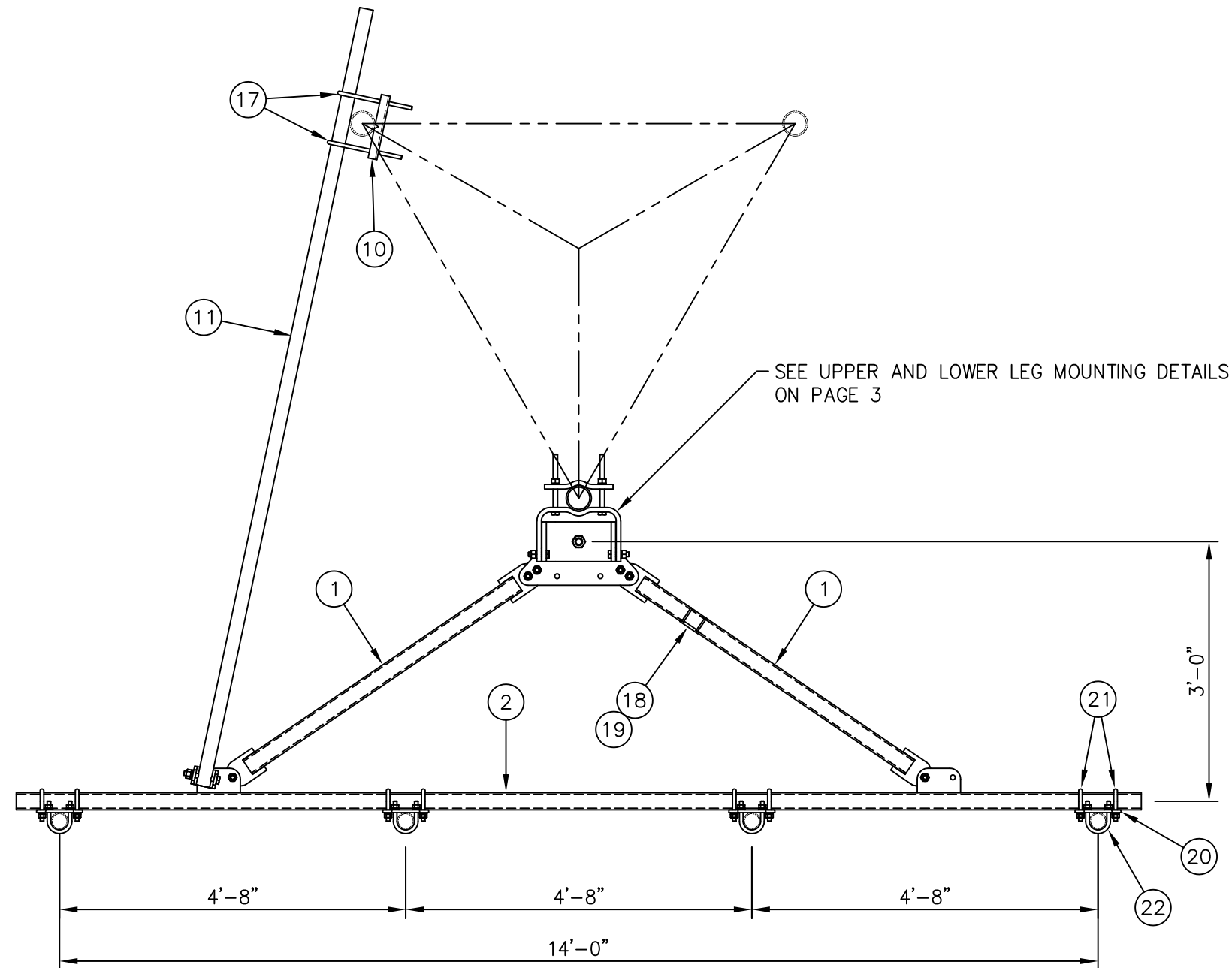
Distributed By
Rosenberger
Rosenberger Site Solutions, LLC
visit www.RosenbergerOnline.us

INSTALLATION NOTES:

1. INSTALL MOUNT TO TOWER AS SHOWN, SO THAT WELDED STANDOFF DIAGONAL IS SLOPING DOWNWARD FROM TOWER END TO FACE PIPE END.
2. UPPER PIVOTING PLATE (ITEM 4) HAS THREE HOLES ON EACH SIDE AND UPPER LEG CLAMP PLATE (ITEM 5) HAS TWO HOLES ON EACH SIDE FOR TAPER ADJUSTMENT.
3. INSTALL PRODUCT EXACTLY AS SHOWN IN DRAWING, WITH ALL BOLTS FACING UPWARDS.
4. IF LOCKING CABLE GUIDES ARE REQUIRED THEY MUST BE PURCHASED SEPARATELY (SEE PAGE 4).

UNLESS OTHERWISE SPECIFIED ALL DIMENSIONS INCLUDE FINISHES AND ARE IN INCHES		TOLERANCES: FRACTIONS ± 1/16" ANGLES ± 1/2 DEG. DECIMALS ± .010"		MATERIAL:	
				TOLERANCES DO NOT APPLY TO RAW MATERIAL	
CONFIDENTIAL This document and the information contained herein is the confidential trade secret property of Sabre Communications Corporation ("Sabre") and must not be reproduced, copied or used, in whole or in part, for any purpose without the prior written consent of Sabre. © 2014 Sabre Communications Corporation. All rights reserved.					
14' HD V-BOOM ASSEMBLY W/TIEBACK (3' STANDOFF) W/CROSSOVER PLATE KITS (2 3/8-2 7/8)				SIZE B	DRAWING NO. C10857333C
DATE	11/05/18			REV 1	
DRAWN BY	KLE			SCALE	PAGE
CHECKED BY	EK			None	1 OF 4

REV	DATE	DRW	CHK	DESCRIPTION
1	04/29/20	WRF	EK	ADDED NOTE 5 TO GENERAL NOTES. ADDED NOTE 4 TO INSTALLATION NOTES AND ADDED PAGE 4



SIDE VIEW

MOUNTING OPTIONS
SHOWING MOUNTING PIPE PLACEMENTS

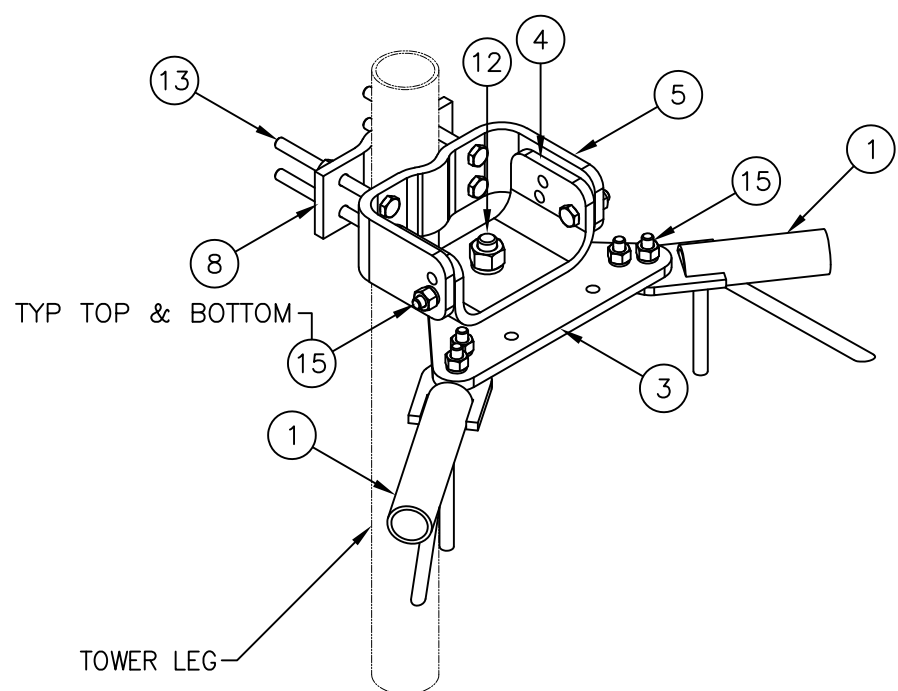
UNLESS OTHERWISE SPECIFIED ALL DIMENSIONS INCLUDE FINISHES AND ARE IN INCHES				MATERIAL:	
TOLERANCES: FRACTIONS ± 1/16" ANGLES ± 1/2 DEG. DECIMALS ± .010"				TOLERANCES DO NOT APPLY TO RAW MATERIAL	
1	04/29/20	WRF	EK	ADDED NOTE 5 TO GENERAL NOTES, ADDED NOTE 4 TO INSTALLATION NOTES AND ADDED PAGE 4	
REV	DATE	DRW	CHK	DESCRIPTION	

CONFIDENTIAL

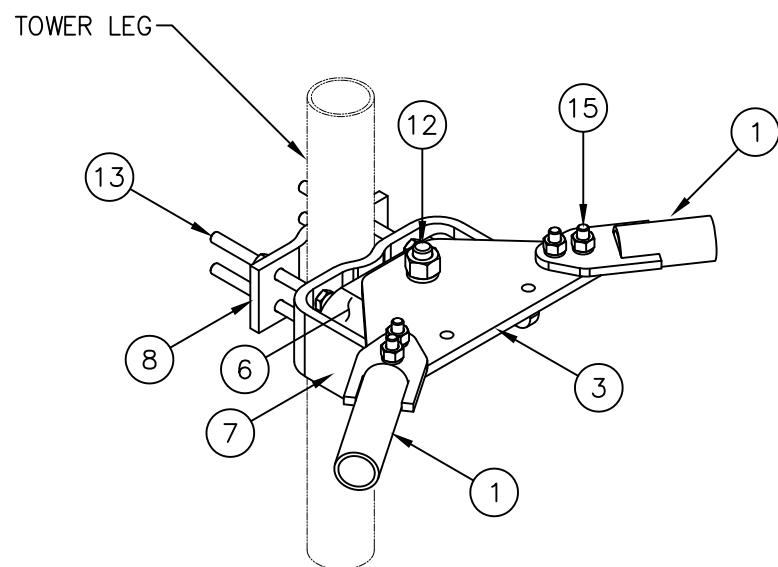
This document and the information contained herein is the confidential trade secret property of Sabre Communications Corporation ("Sabre") and must not be reproduced, copied or used, in whole or in part, for any purpose without the prior written consent of Sabre.

© 2014 Sabre Communications Corporation. All rights reserved.

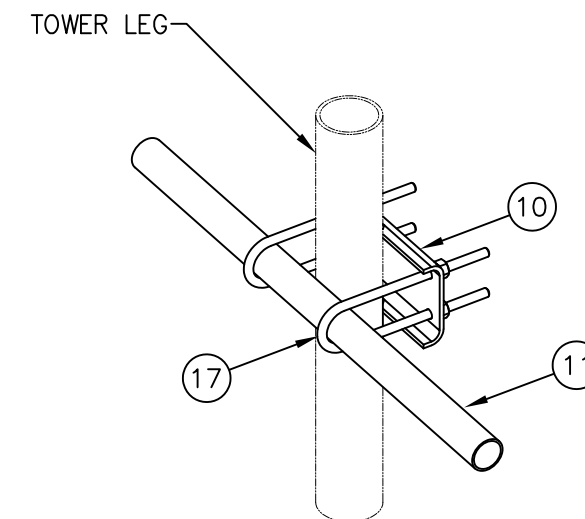
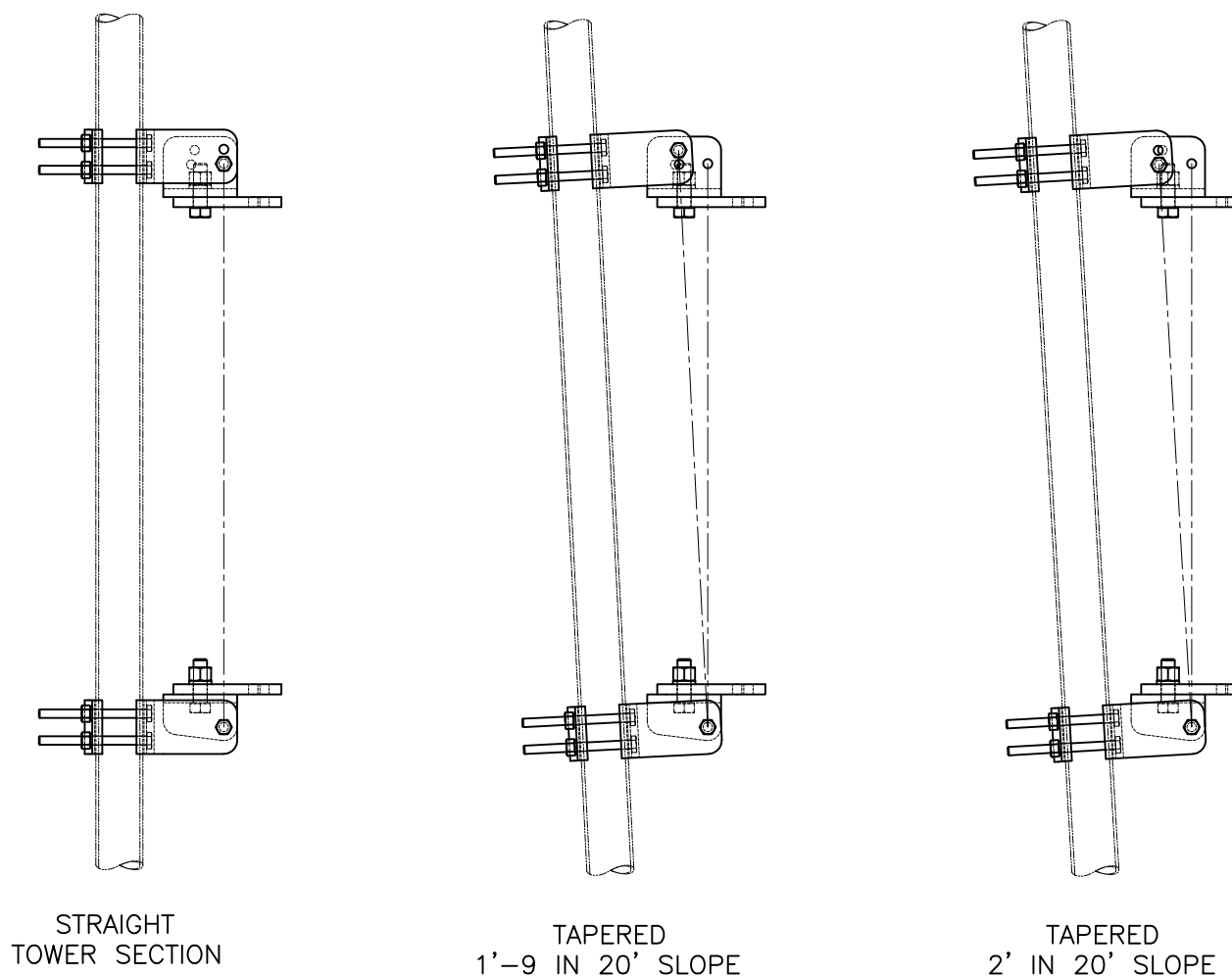
14' HD V-BOOM ASSEMBLY W/TIEBACK (3' STANDOFF) W/CROSSOVER PLATE KITS (2 3/8-2 7/8)					
DATE		11/05/18	SIZE	DRAWING NO.	REV
DRAWN BY		KLE	B	C10857333C	1
CHECKED BY		EK		SCALE	PAGE
				None	2 OF 4



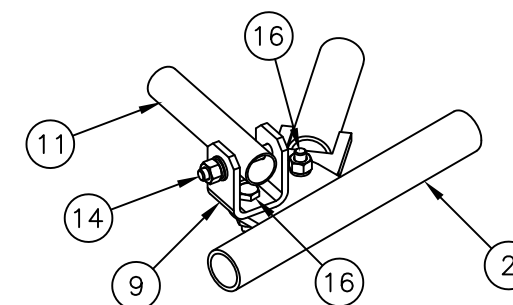
UPPER LEG MOUNTING DETAIL



LOWER LEG MOUNTING DETAIL



TIE BACK DETAIL
AT TOWER LEG

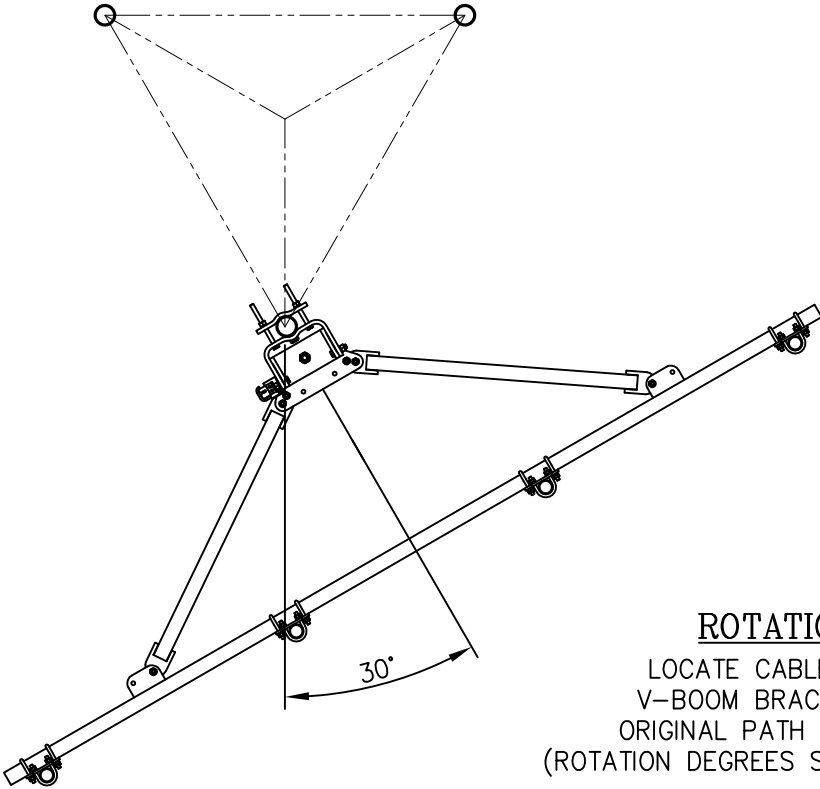


TIE BACK DETAIL
AT ANTENNA MOUNTING FRAME

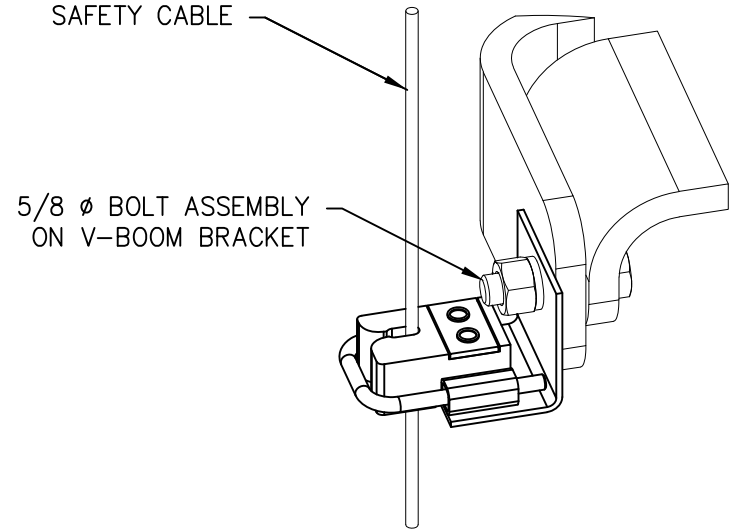
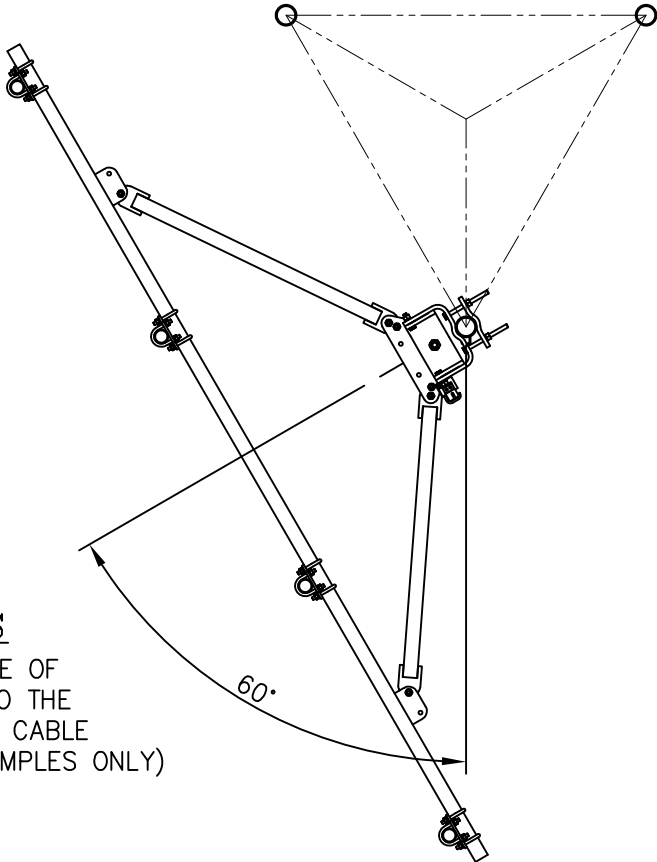
UNLESS OTHERWISE SPECIFIED ALL DIMENSIONS INCLUDE FINISHES AND ARE IN INCHES				MATERIAL:		<div>Sabre Industries™ Towers and Poles</div>		14' HD V-BOOM ASSEMBLY W/TIEBACK (3' STANDOFF) W/CROSSOVER PLATE KITS (2 3/8-2 7/8)					
TOLERANCES: FRACTIONS ± 1/16" ANGLES ± 1/2 DEG. DECIMALS ± .010"				TOLERANCES DO NOT APPLY TO RAW MATERIAL									
						<div>CONFIDENTIAL</div> <div>This document and the information contained herein is the confidential trade secret property of Sabre Communications Corporation ("Sabre") and must not be reproduced, copied or used, in whole or in part, for any purpose without the prior written consent of Sabre.</div> <div>© 2014 Sabre Communications Corporation. All rights reserved.</div>				SIZE	DRAWING NO.		REV
								DATE	11/05/18	B	C10857333C		1
								DRAWN BY		KLE			
								CHECKED BY		EK			
												SCALE	PAGE
												None	3 OF 4
1	04/29/20	WRF	EK	ADDED NOTE 5 TO GENERAL NOTES.									
				ADDED NOTE 4 TO INSTALLATION NOTES AND ADDED PAGE 4									
REV	DATE	DRW	CHK	DESCRIPTION									

OPTIONAL LOCKING CABLE GUIDE

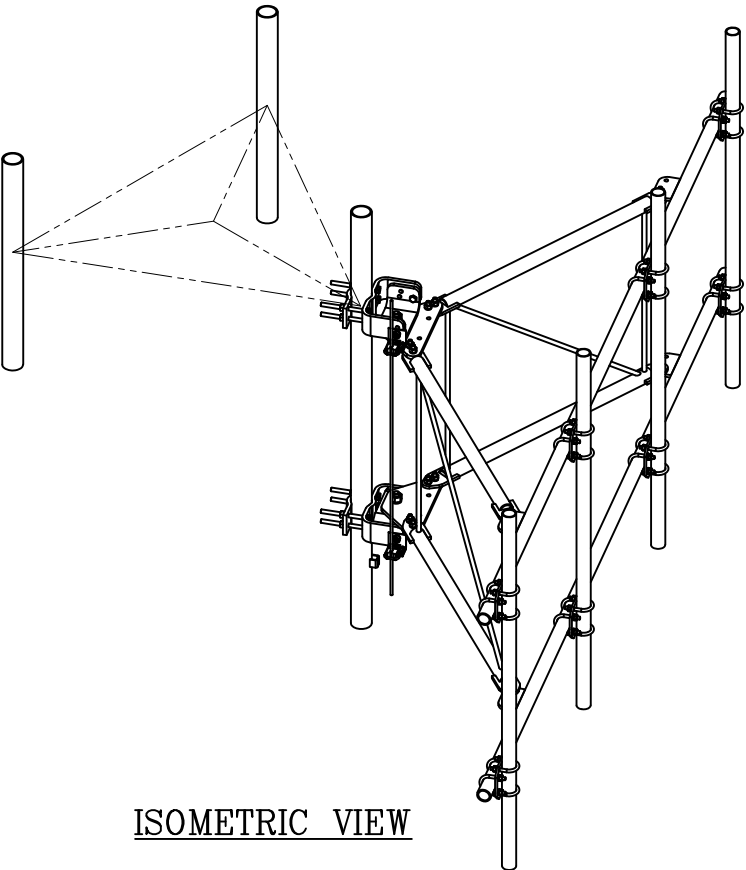
IF REQUIRED PLEASE ORDER PART NUMBER C30017022. THIS KIT WILL COME WITH (2) LOCKING CABLE GUIDES FOR TOP & BOTTOM V-BOOM BRACKETS.



ROTATION OPTIONS
LOCATE CABLE GUIDE ON SIDE OF V-BOOM BRACKET CLOSEST TO THE ORIGINAL PATH OF THE SAFETY CABLE (ROTATION DEGREES SHOWN ARE EXAMPLES ONLY)




CABLE GUIDE DETAIL



ISOMETRIC VIEW

NOTE

OTHER ADDITIONAL CABLE GUIDE SUPPORTS MAY BE REQUIRED ABOVE AND BELOW V-BOOM SO THAT CABLE ALIGNMENT IS WITHIN REQUIRED LIMITS.

UNLESS OTHERWISE SPECIFIED ALL DIMENSIONS INCLUDE FINISHES AND ARE IN INCHES					MATERIAL:					<div></div>					14' HD V-BOOM ASSEMBLY W/TIEBACK (3' STANDOFF) W/CROSSOVER PLATE KITS (2 3/8-2 7/8)									
TOLERANCES: FRACTIONS ± 1/16" ANGLES ± 1/2 DEG. DECIMALS ± .010"					TOLERANCES DO NOT APPLY TO RAW MATERIAL																			
										CONFIDENTIAL														
										This document and the information contained herein is the confidential trade secret property of Sabre Communications Corporation ("Sabre") and must not be reproduced, copied or used, in whole or in part, for any purpose without the prior written consent of Sabre.														
										© 2014 Sabre Communications Corporation. All rights reserved.														