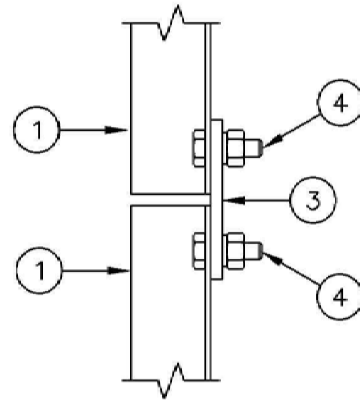


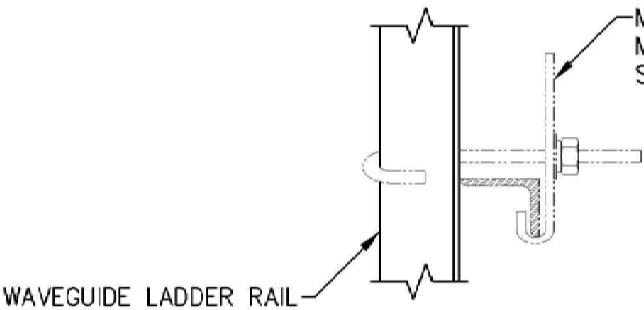
Distributed By
Rosenberger
Rosenberger Site Solutions, LLC
visit www.RosenbergerOnline.us



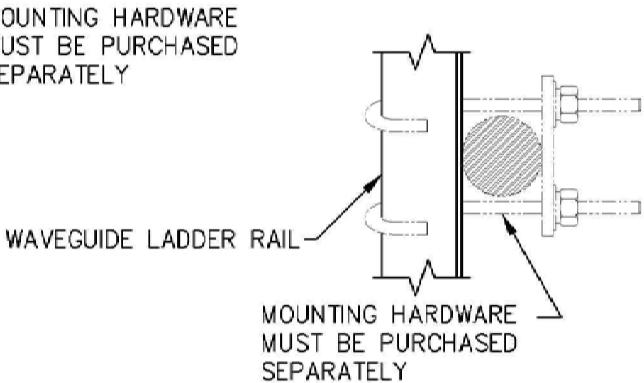
SPLICE DETAIL

C20128031 6 HOLE WAVEGUIDE LADDER ASSEMBLY				
ITEM	QTY.	PART NO.	DESCRIPTION	WEIGHT
1.	2	CS00331	WAVEGUIDE LADDER RAIL, 20'-0	60
2.	7	CS01619	WAVEGUIDE LADDER RUNG, 6 HOLE	15
3.	2	CS00037	SPLICE PLATE	1
4.	18	C40024004	BOLT ASSEMBLY, 3/8 X 1 1/2 GRADE 5	2
TOTAL WEIGHT				78

NOTE:
MAXIMUM SPACING OF LADDER CLIPS UP THE TOWER TO BE 10'-0".




SECTION A-A
(MOUNTING OPTION 1)
(FOR ANGLE BRACES 1 1/2" TO 6")



SECTION A-A
(MOUNTING OPTION 2)
(FOR ROUND BRACES 3/4" TO 1 1/2" O.D.)

FIELD NOTE:
WAVEGUIDE LADDERS SHOULD NEVER BE USED AS A CLIMBING OR RIGGING DEVICE.

UNLESS OTHERWISE SPECIFIED ALL DIMENSIONS INCLUDE FINISHES AND ARE IN INCHES				MATERIAL:		 Towers and Poles		20'-0" WAVEGUIDE LADDER 6 HOLE RUNG					
TOLERANCES: FRACTIONS ± 1/16" ANGLES ± 1/2 DEG. DECIMALS ± .010"				TOLERANCES DO NOT APPLY TO RAW MATERIAL									
						CONFIDENTIAL							
						This document and the information contained herein is the confidential trade secret property of Sabre Communications Corporation ("Sabre") and must not be reproduced, copied or used, in whole or in part, for any purpose without the prior written consent of Sabre.							
						© 2015 Sabre Communications Corporation. All rights reserved.							
1	6/12/19	FJM	DLW	ADDED FIELD NOTE									
REV	DATE	DRW	CHK	DESCRIPTION				SIZE		DRAWING NO.		REV	
								B		C20128031		1	
								DATE		1/26/15			
								DRAWN BY		CHH			
								CHECKED BY		HHC			
										SCALE		PAGE	
										None		1 OF 1	