
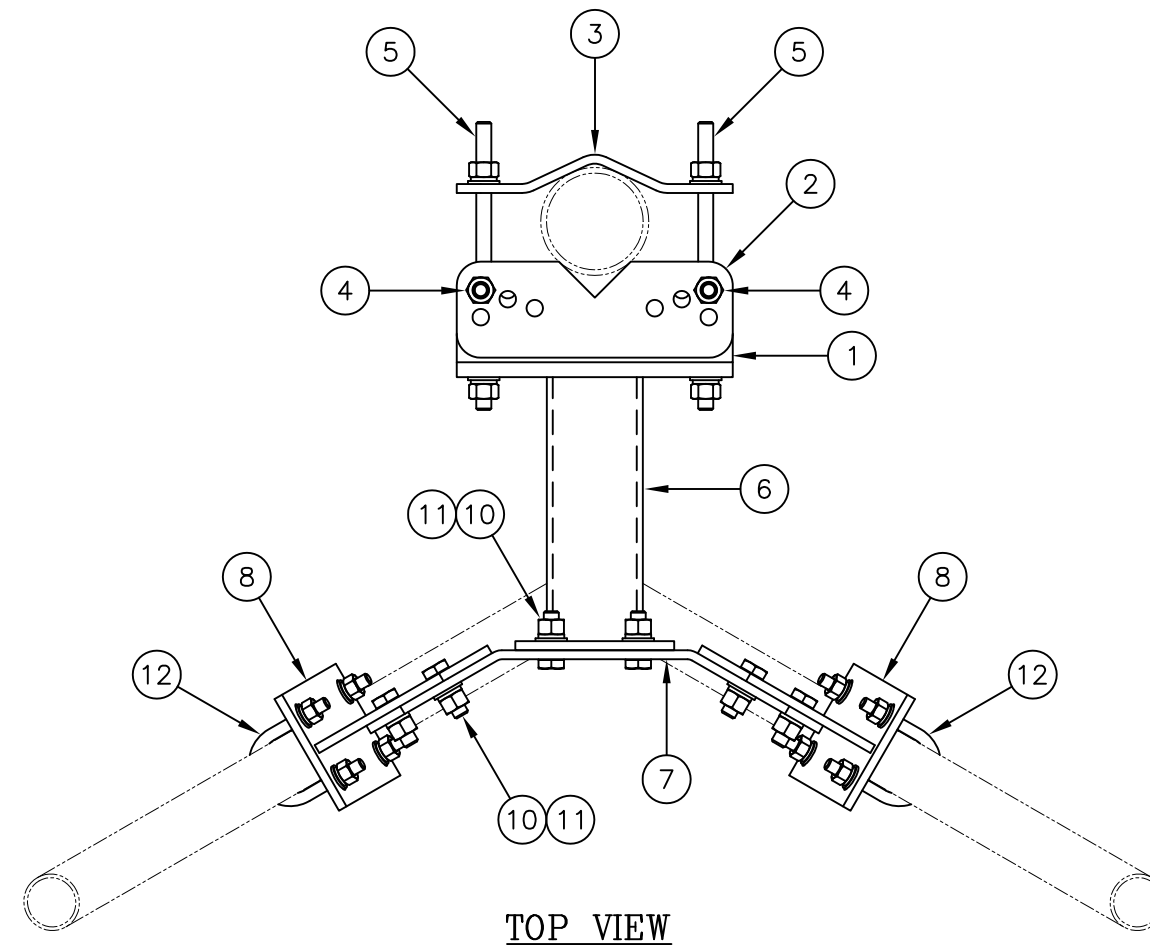



UNLESS OTHERWISE SPECIFIED ALL DIMENSIONS INCLUDE FINISHES AND ARE IN INCHES				MATERIAL:				COMPACT DUAL RRU MOUNT WITH TILT FEATURE (FOR TOWERS) 1' STANDOFF WITH 2' SEPARATION NO MOUNTING PIPES 1 1/2" - 5 9/16" O.D. LEGS					
TOLERANCES: FRACTIONS $\pm 1/16"$ ANGLES $\pm 1/2$ DEG. DECIMALS $\pm .010"$				TOLERANCES DO NOT APPLY TO RAW MATERIAL									
						CONFIDENTIAL This document and the information contained herein is the confidential trade secret property of Sabre Communications Corporation ("Sabre") and must not be reproduced, copied or used, in whole or in part, for any purpose without the prior written consent of Sabre. © 2017 Sabre Communications Corporation. All rights reserved.		SIZE B		DRAWING NO. C10114225		REV 1	
1	06/14/17	KLE	EK	RESTRUCTURED LIST OF MATERIAL PER CATALOG				DATE	03/30/17	SCALE None		PAGE 1 OF 2	
REV	DATE	DRW	CHK	DESCRIPTION		DRAWN BY	WRF						
						CHECKED BY	KLE						



UNLESS OTHERWISE SPECIFIED ALL DIMENSIONS INCLUDE FINISHES AND ARE IN INCHES					MATERIAL:					<div> Sabre Industries™ Towers and Poles</div>					COMPACT DUAL RRU MOUNT WITH TILT FEATURE (FOR TOWERS) 1' STANDOFF WITH 2' SEPARATION NO MOUNTING PIPES 1 1/2" – 5 9/16" O.D. LEGS									
TOLERANCES: FRACTIONS ± 1/16" ANGLES ± 1/2 DEG. DECIMALS ± .010"					TOLERANCES DO NOT APPLY TO RAW MATERIAL																			
										<div>CONFIDENTIAL</div> <p>This document and the information contained herein is the confidential trade secret property of Sabre Communications Corporation ("Sabre") and must not be reproduced, copied or used, in whole or in part, for any purpose without the prior written consent of Sabre.</p> <p>© 2017 Sabre Communications Corporation. All rights reserved.</p>														
1	06/14/17	KLE	EK	RESTRUCTURED LIST OF MATERIAL PER CATALOG																				
REV	DATE	DRW	CHK	DESCRIPTION																				