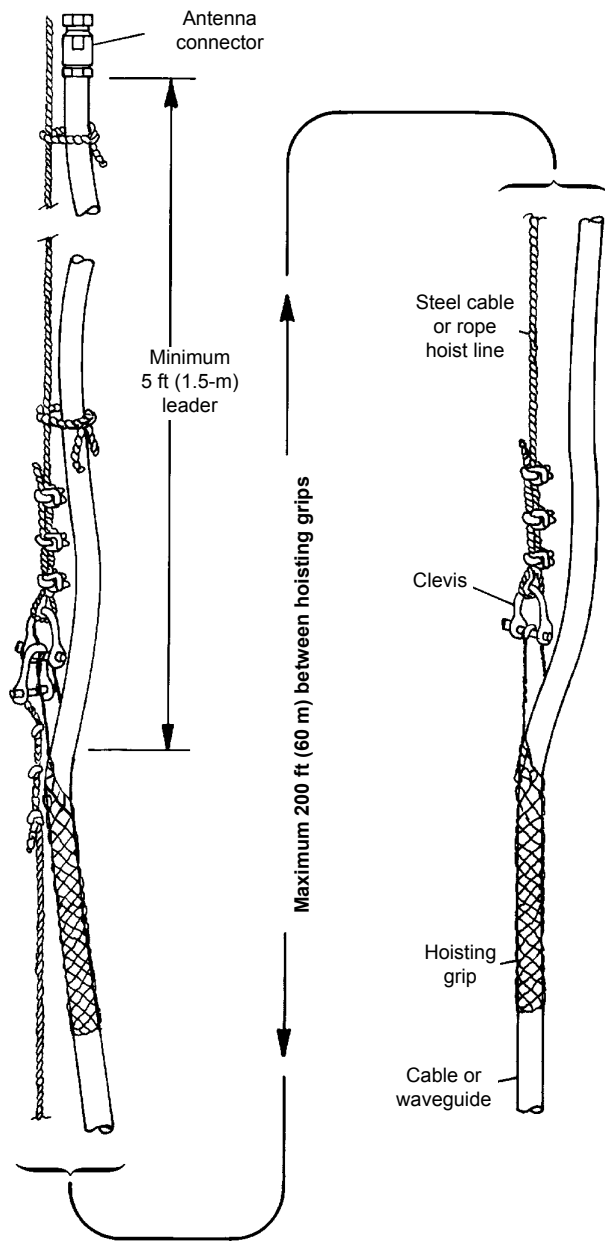


## CX Series Lace Up Hoisting Grips

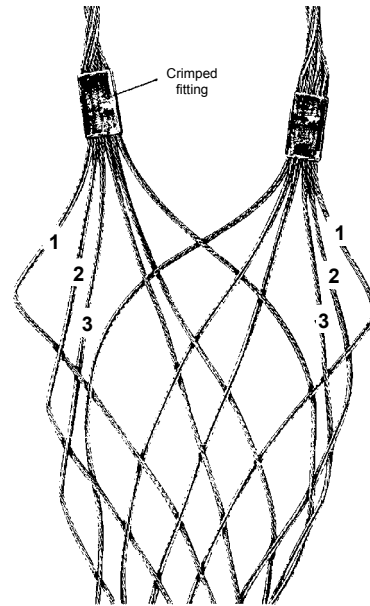
### Installation Instructions

**Note:** This instruction sheet applies to 7/8", 1-1/4" and 1-5/8" Corrugated Coaxial Cables.

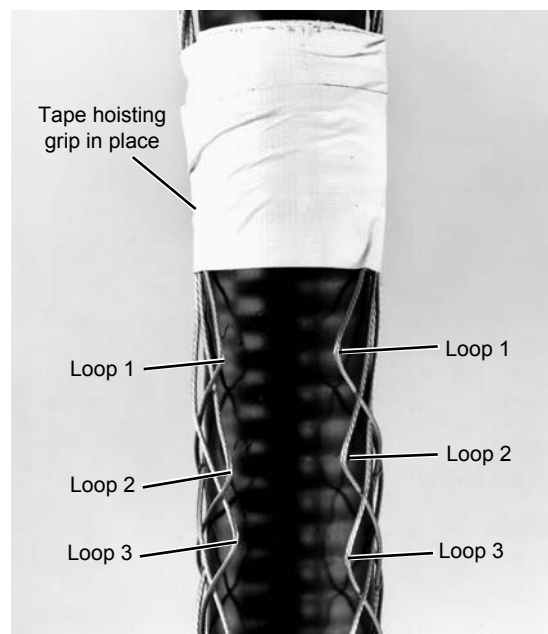
1. Place the Hoisting Grip(s) at the proper location on the cable before attaching the connector. Allow a sufficient length of cable to reach the antenna input when cable hoisting is completed.



2. Identify the first three loop pairs to be laced at the crimped fittings as shown in **Figure 2A**. Make sure the loops are not tangled. It is important that the loop pairs are correctly matched to ensure maximum gripping strength. Then tape both crimped fittings to the cable as shown in **Figure 2B**. This will align the loop pairs of the hoisting grip and aid in lacing.



**Figure 2A**



**Figure 2B**

## CX Series Lace Up Hoisting Grips - Page 2

3. Fold the lace in half to form a crease at the center. Starting at the top, pass the lace through the first loop pair so that the crease is between them as shown in **Figure 3A**. Cross the lace ends and pass them through the second loop pair from the underside and pull at right angles in the same way as lacing a shoe (see **Figure 3B**).

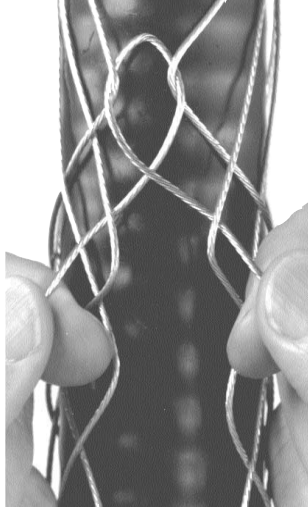


Figure 3A



Figure 3B

4. Continue lacing so that the seam is straight and the lace is pulled so that the space between both sides of the seam is no greater than the spaces of the mesh next to the loop. **See Figure 4. Do not skip any loop pairs of the grip when lacing;** this will weaken the hoisting grip. The grip can be compressed from bottom to top to simplify lacing.

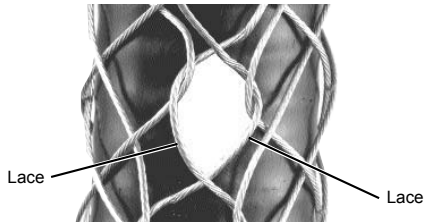


Figure 4

5. Tightly twist the lacing together several times at the end of the seam as shown in **Figure 5A**. Wrap the lace around the hoisting grip, twist it together, and thread the remainder of lace through grip as shown in **Figure 5B**. **Do not tie knots with the lace because they will not hold!**



Figure 5A



Figure 5B

**6. IMPORTANT: First, remove the tape from the tip of the hoisting grip.** Then, place both hands firmly around the bottom of the grip and slide them upward to the top as shown in **Figure 6**. This pulling action removes slack throughout the grip. Repeat this twice.



Figure 6

7. Attach the hoist line to the grip. **See Figure 7.** Tie the cable leader to the hoist line so that the leader does not dangle. Apply tension slowly to the hoist line to allow the hoisting grip to tighten uniformly on the cable.

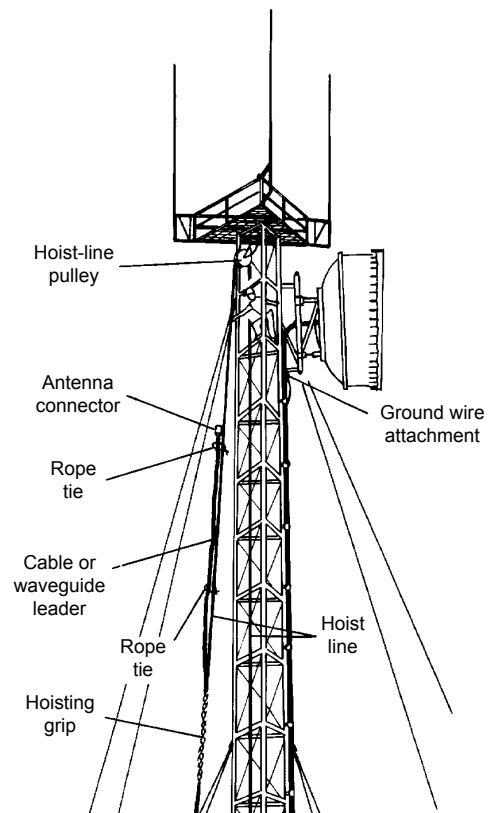


Figure 7