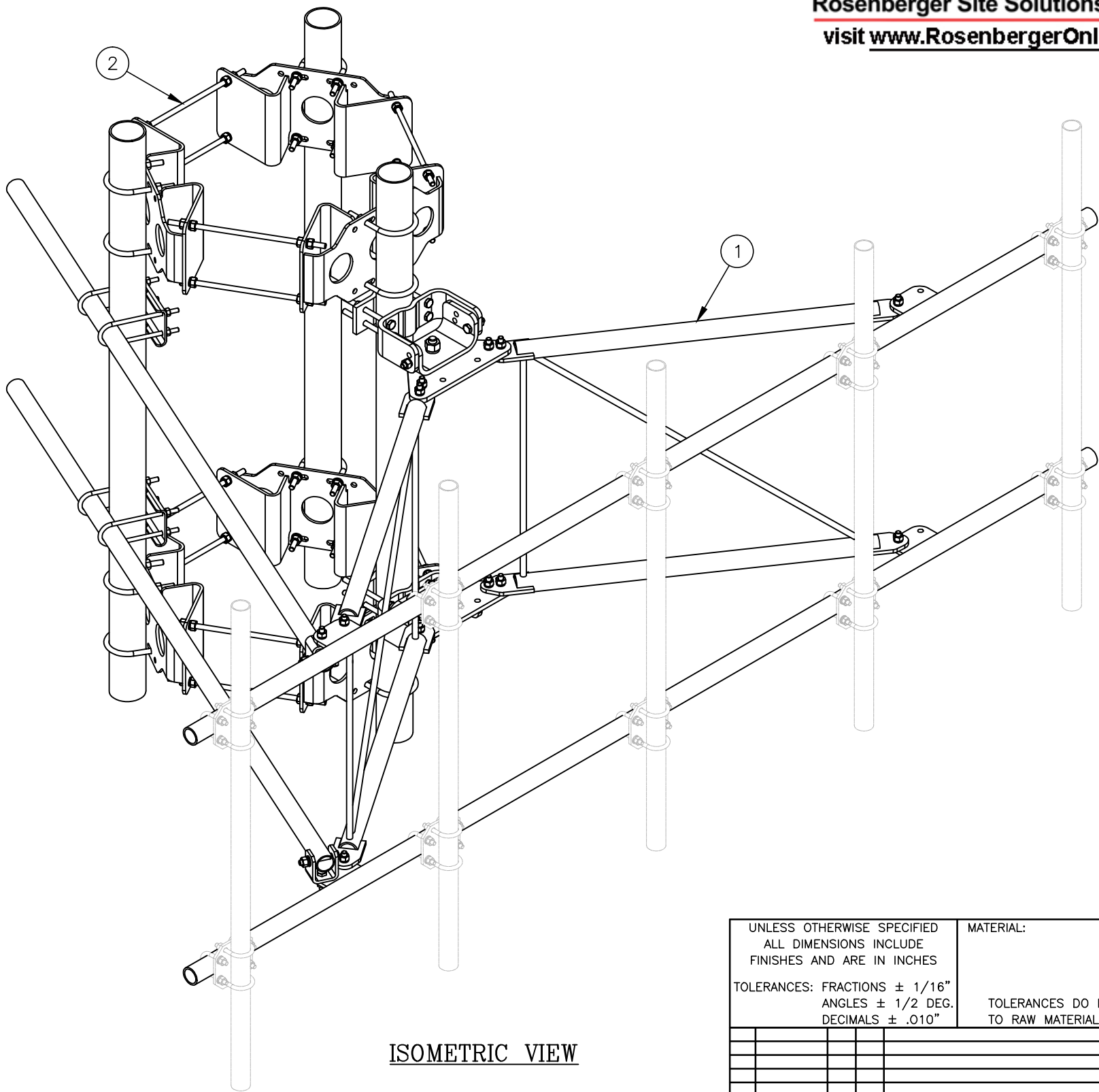


Distributed By
Rosenberger
Rosenberger Site Solutions, LLC
visit www.RosenbergerOnline.us

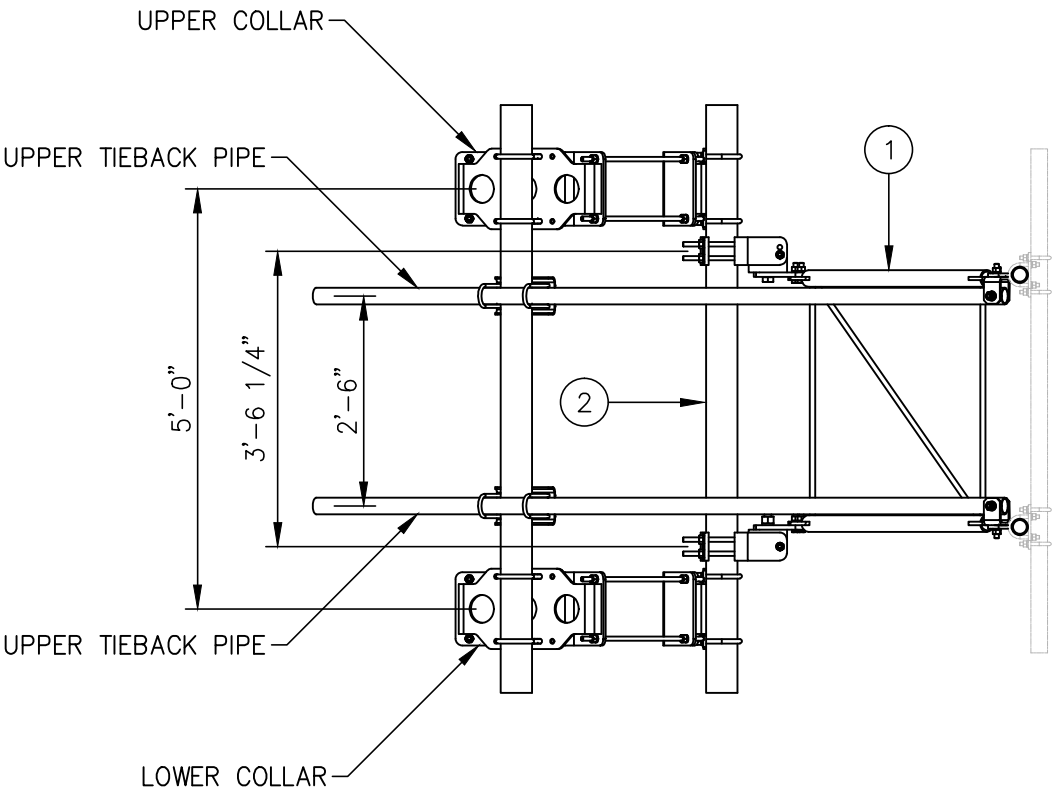


ISOMETRIC VIEW


C10857808 12' EHD V-BOOM ASSEMBLY W/TIEBACK				
ITEM	QTY.	PART NO.	DESCRIPTION	WEIGHT
1.	1	C10857007C	12' EHD V-BOOM ASSEMBLY W/TIE BACK	511
2.	1	C10899050	4 1/2" O.D. MONOPOLE PIPE MOUNT ASSEMBLY	678
			TOTAL WEIGHT	1189

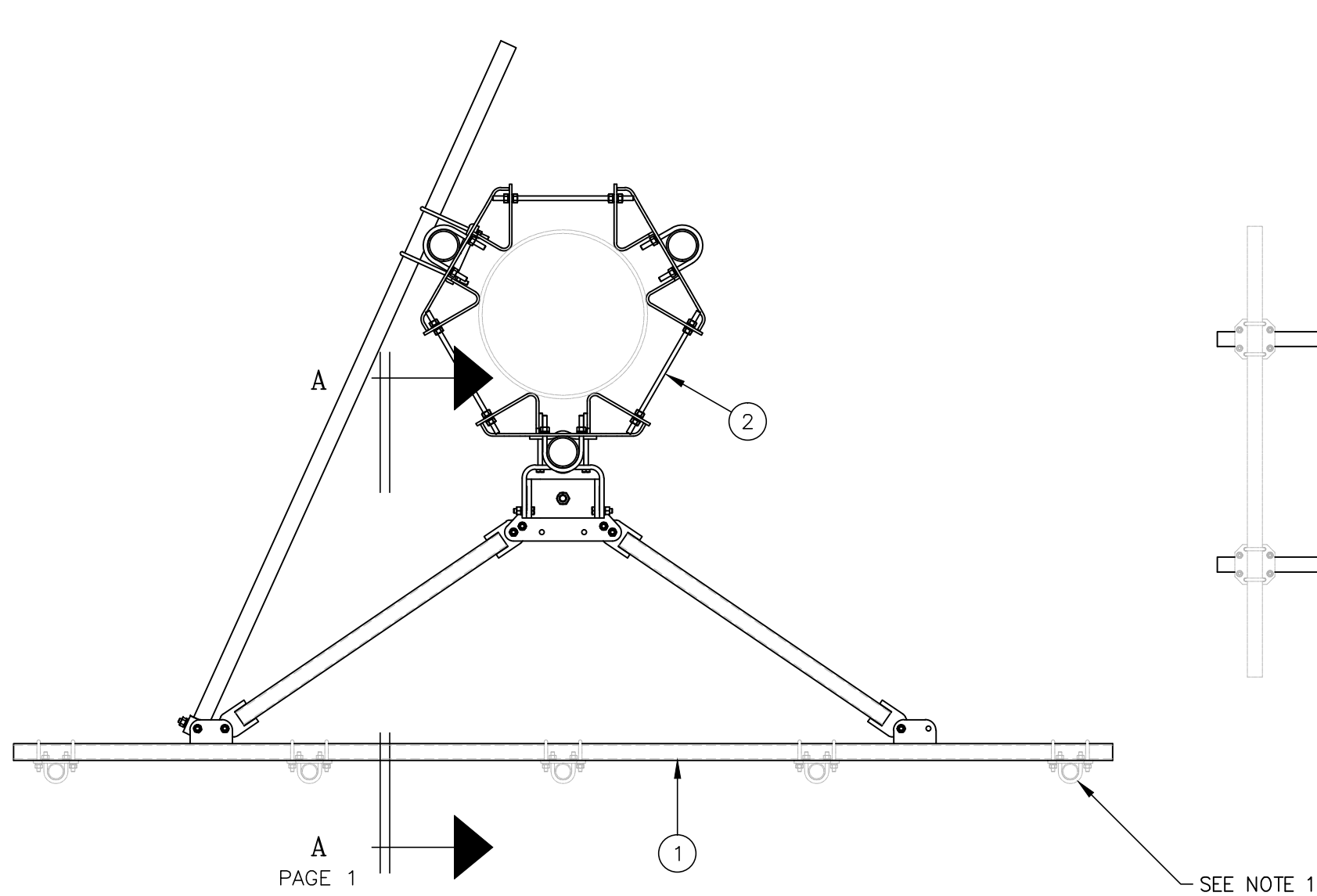
NOTES:

- 1. MOUNTING PIPES & CROSSOVER PLATE KITS MUST BE PURCHASED SEPARATELY.
- 2. SEE DRAWING C10857007C FOR 12' V-BOOM ASSEMBLY.
- 3. SEE DRAWING C10899050 FOR 4 1/2" O.D. MONOPOLE PIPE MOUNT ASSEMBLY.

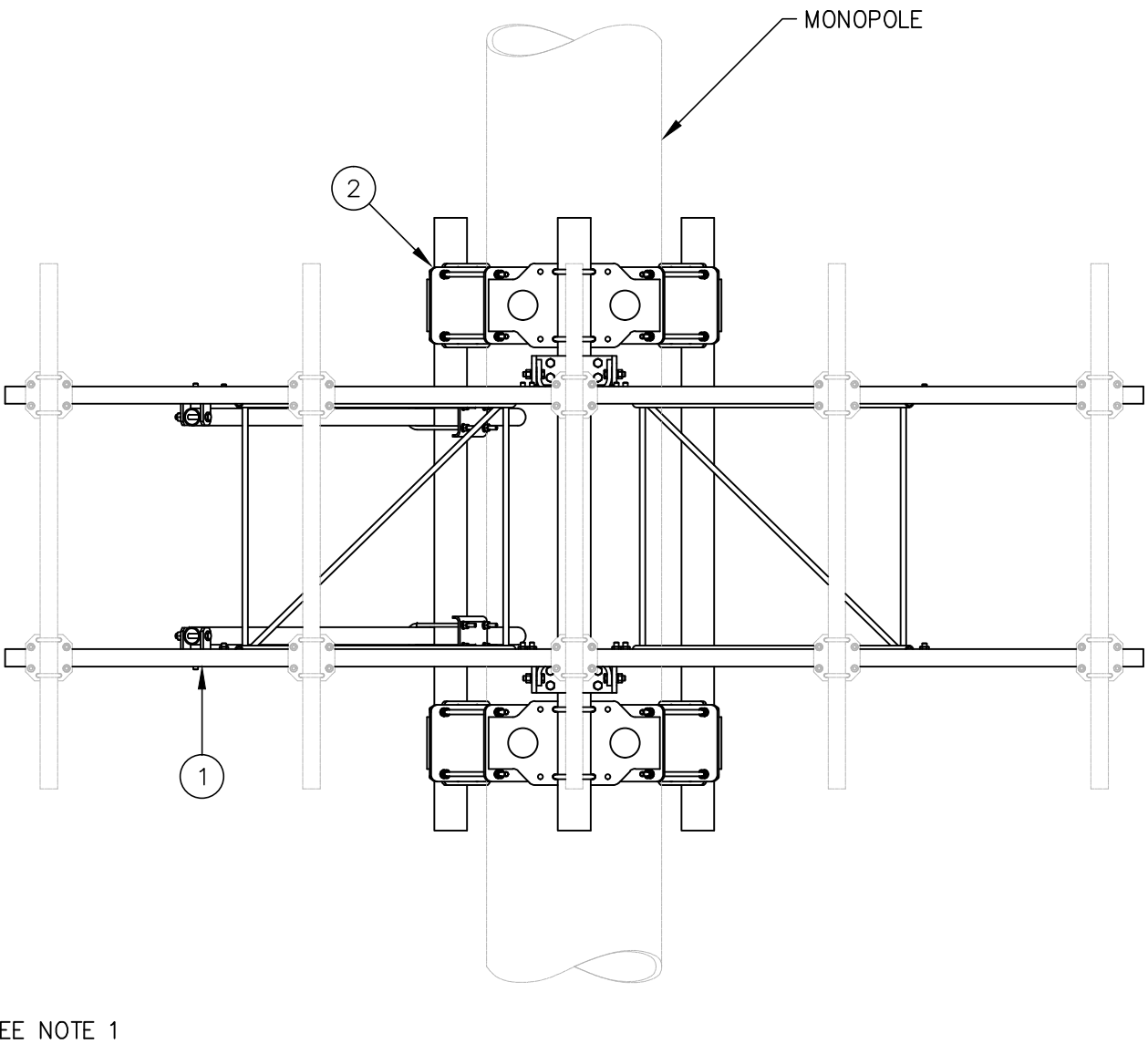


VIEW A-A
FROM PAGE 2


UNLESS OTHERWISE SPECIFIED ALL DIMENSIONS INCLUDE FINISHES AND ARE IN INCHES					MATERIAL:										12' EHD V-BOOM ASSEMBLY W/TIEBACK (3' STANDOFF) ON MONOPOLE PIPE MOUNT ASSEMBLY W/NO ANTENNA MOUNTING PIPES									
TOLERANCES: FRACTIONS ± 1/16" ANGLES ± 1/2 DEG. DECIMALS ± .010"					TOLERANCES DO NOT APPLY TO RAW MATERIAL																			
					<div>CONFIDENTIAL</div> <div>This document and the information contained herein is the confidential trade secret property of Sabre Communications Corporation ("Sabre") and must not be reproduced, copied or used, in whole or in part, for any purpose without the prior written consent of Sabre.</div> <div>© 2018 Sabre Communications Corporation. All rights reserved.</div>													SIZE			DRAWING NO.			REV
															DATE		09/24/18		B		C10857808			0
															DRAWN BY		WRF					SCALE		PAGE
															CHECKED BY		WMN					None		1 OF 2
REV	DATE	DRW	CHK	DESCRIPTION																				



PLAN VIEW



ELEVATION VIEW

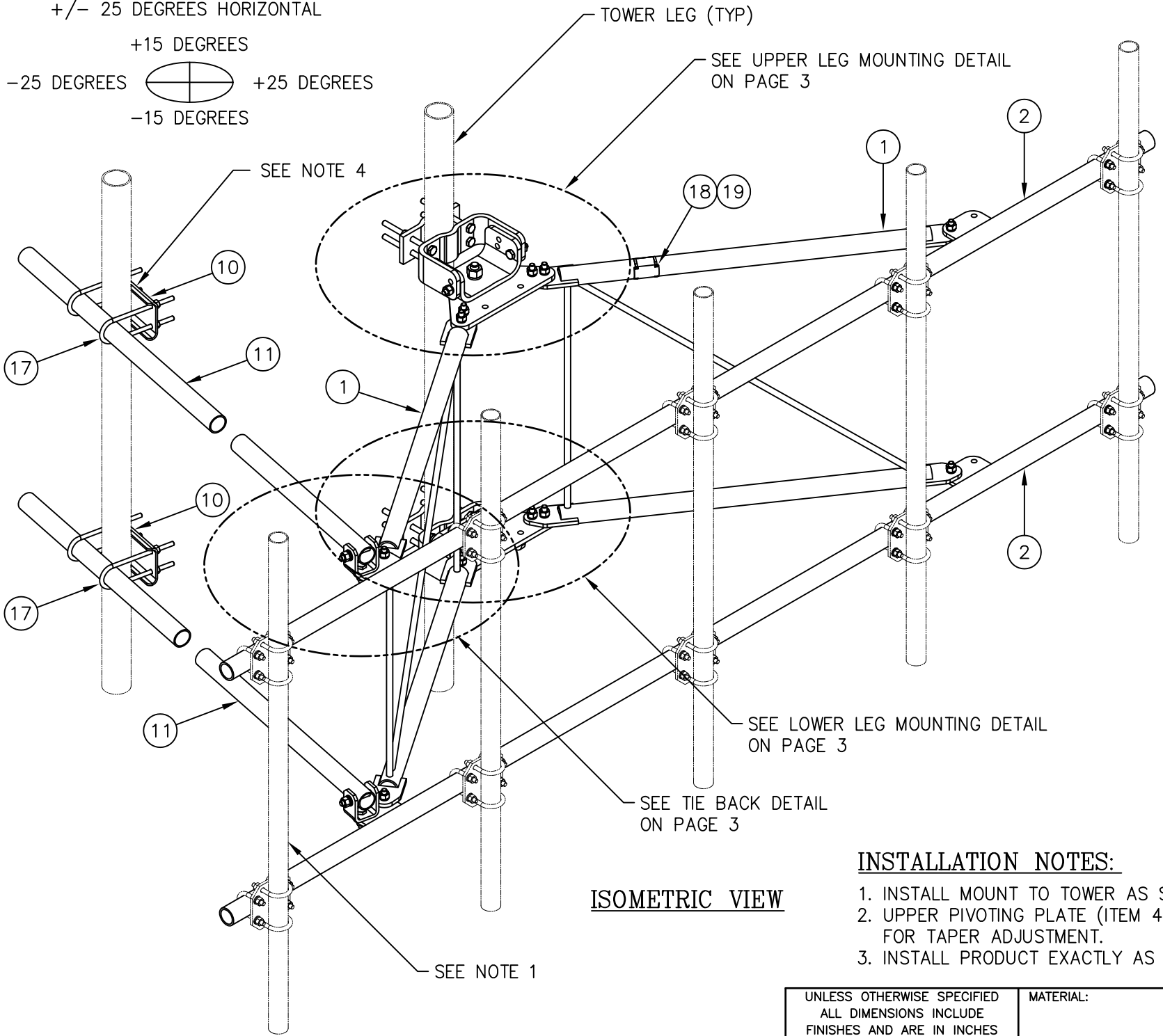
UNLESS OTHERWISE SPECIFIED ALL DIMENSIONS INCLUDE FINISHES AND ARE IN INCHES				MATERIAL:			12' EHD V-BOOM ASSEMBLY W/TIEBACK (3' STANDOFF) ON MONOPOLE PIPE MOUNT ASSEMBLY W/NO ANTENNA MOUNTING PIPES					
TOLERANCES: FRACTIONS ± 1/16" ANGLES ± 1/2 DEG. DECIMALS ± .010"				TOLERANCES DO NOT APPLY TO RAW MATERIAL								
						<p>CONFIDENTIAL</p> <p>This document and the information contained herein is the confidential trade secret property of Sabre Communications Corporation ("Sabre") and must not be reproduced, copied or used, in whole or in part, for any purpose without the prior written consent of Sabre.</p> <p>© 2018 Sabre Communications Corporation. All rights reserved.</p>			SIZE	DRAWING NO.		REV
							DATE	09/24/18	B	C10857808		0
							DRAWN BY		WRF			
							CHECKED BY		WMN			
REV	DATE	DRW	CHK	DESCRIPTION								



TIEBACK ANGLE RANGE DETAIL

+/- 15 DEGREES VERTICAL
+/- 25 DEGREES HORIZONTAL

+15 DEGREES
-25 DEGREES +25 DEGREES
-15 DEGREES



NOTES:

- 1. MOUNTING PIPES & CROSSOVER PLATE KITS MUST BE PURCHASED SEPARATELY.
- 2. QUANTITIES SHOWN IN LISTS OF MATERIAL ARE FOR ONE (1) V-BOOM ONLY.
- 3. THIS V-BOOM WILL MOUNT TO THE FOLLOWING: 1 1/2"Ø TO 5 9/16"Ø ROUND LEG.
- 4. TIEBACKS MUST BE CONNECTED TO A RIGID MEMBER THAT PROVIDES ADEQUATE SUPPORT WITHIN THE LIMITS NOTED ABOVE IN THE TIEBACK ANGLE RANGE DETAIL UNLESS APPROVED BY THE ENGINEER OF RECORD.

C10857007C 12' EHD V-BOOM ASSEMBLY W/TIEBACKS


ITEM	QTY.	PART NO.	DESCRIPTION	WEIGHT
1.	2	CW01222	WELDMENT, STANDOFF ARM	126
2.	2	CW01223	WELDMENT, FACE PIPE	147
3.	2	CS03109	PLATE, ROTATING	34
4.	1	CS03110	PLATE, PIVOTING (UPPER)	16
5.	1	CS03111	PLATE, LEG CLAMP (UPPER)	17
6.	1	CS03112	PLATE, PIVOTING (LOWER)	14
7.	1	CS03113	PLATE, LEG CLAMP (LOWER)	17
8.	2	CS03114	PLATE, LEG CLAMP (BACK)	14
9.	2	CS00098	PLATE, TIE BACK SWIVEL	5
10.	2	CS03285	PLATE, TIE BACK CLAMP	9
11.	2	CS03333	PIPE, TIE BACK	76
12.	2	C40026073	BOLT ASSEMBLY, 1 Ø X 3 A325	4
13.	8	C40140004	BOLT ASSEMBLY, 5/8 Ø X 8 A307	13
14.	2	C40026033	BOLT ASSEMBLY, 5/8 Ø X 4 1/2 A325	2
15.	12	C40026025	BOLT ASSEMBLY, 5/8 Ø X 2 1/2 A325	6
16.	6	C40026024	BOLT ASSEMBLY, 5/8 Ø X 2 1/4 A325	3
17.	4	C40034183	U-BOLT ASSEMBLY, 1/2 Ø X 2 9/16 C-C	6
18.	1	Z30992017	MOUNT CLASSIFICATION TAG C10857007C	1
19.	2	C40062103	STAINLESS STEEL SELF-LOCKING CABLE TIE	1
TOTAL WEIGHT				511

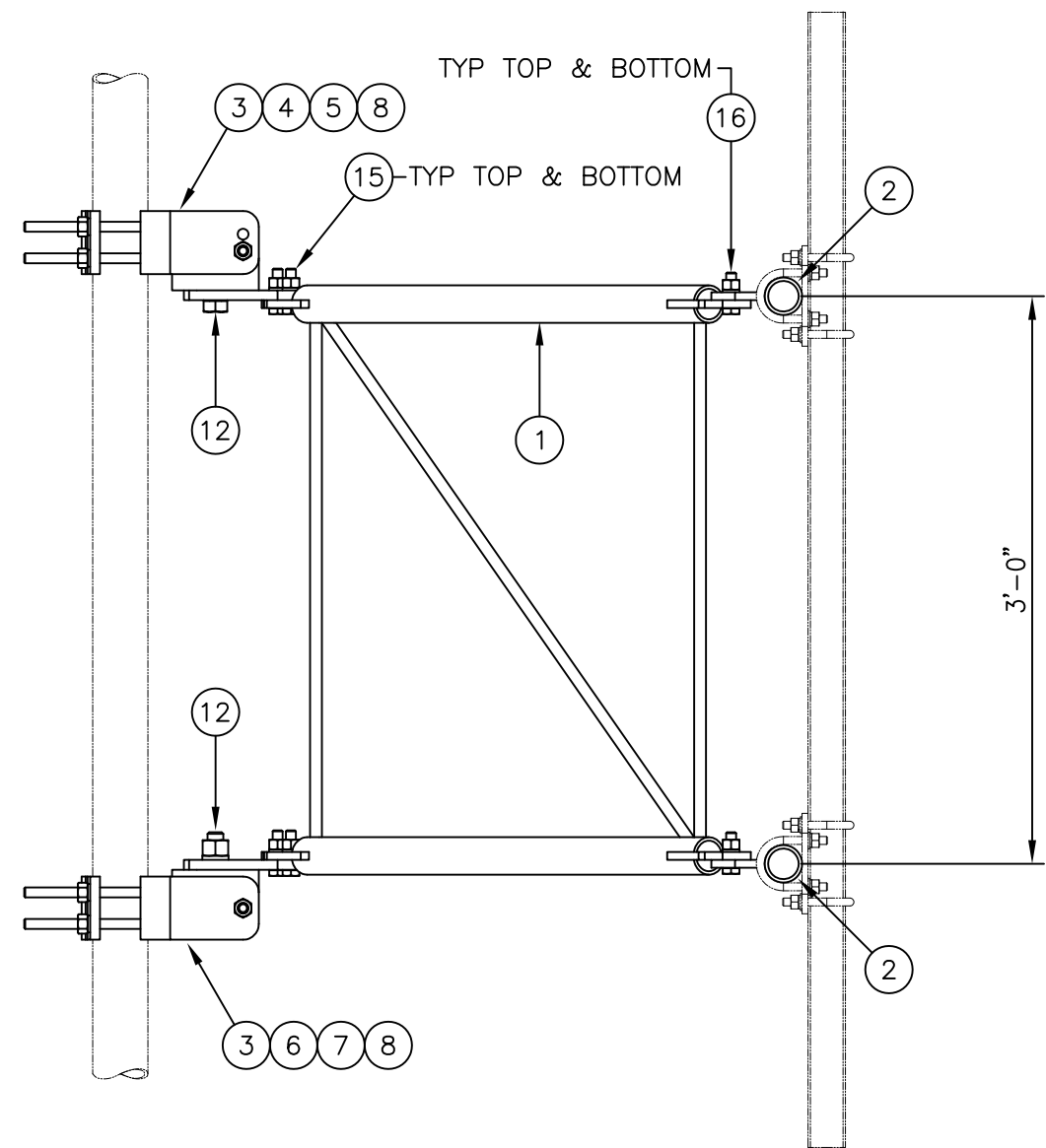
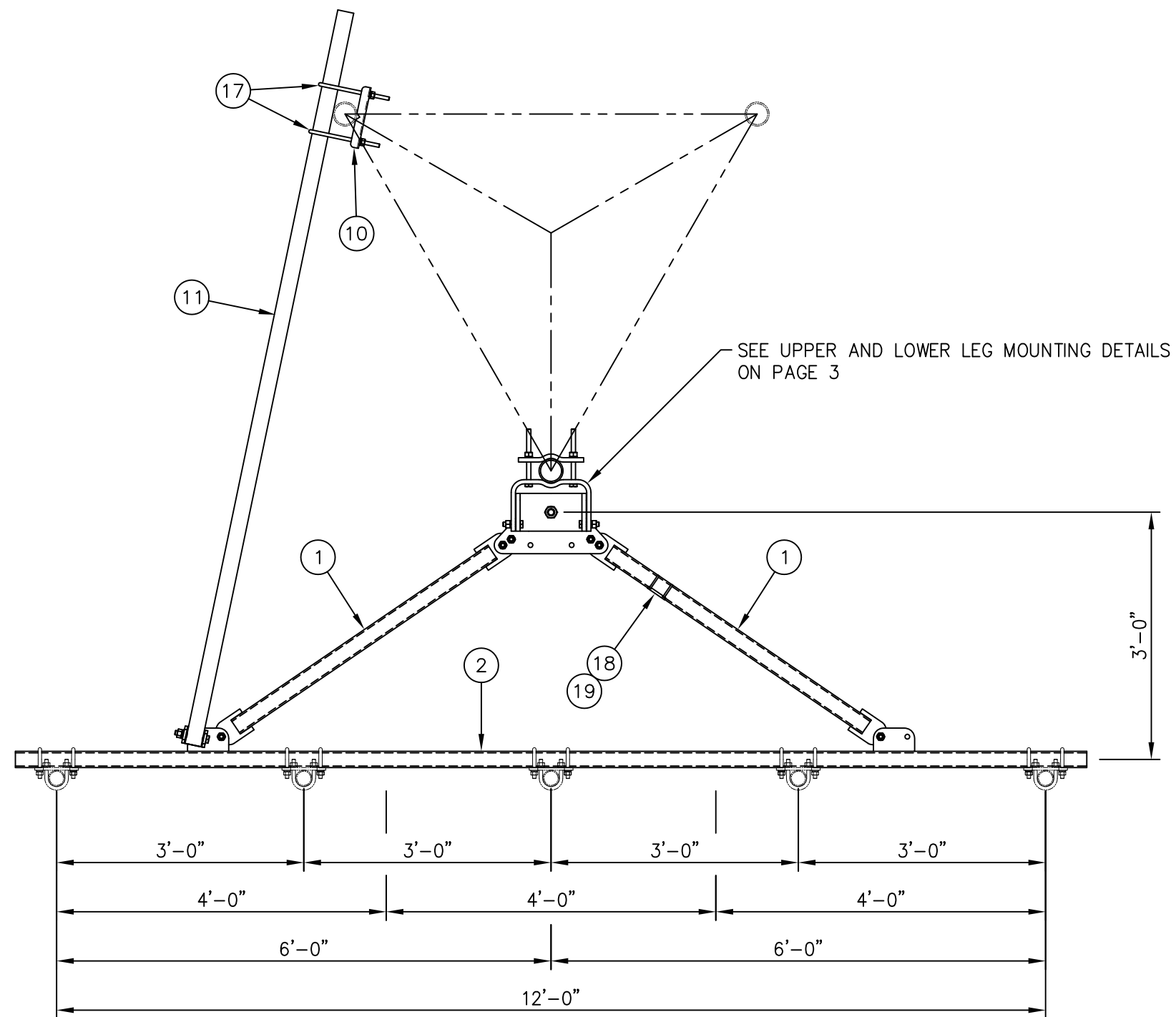
PACKAGING NOTE

CK00386 INCLUDES ITEMS 1, 3, 4, 5, 6, 7, 12 & 15 (8 QTY)
CK00392 INCLUDES ITEMS 2, 8, 9, 10, 11, 13, 14, 15 (4 QTY), 16, 17, 18 & 19

INSTALLATION NOTES:


- 1. INSTALL MOUNT TO TOWER AS SHOWN, SO THAT WELDED STANDOFF DIAGONAL IS SLOPING DOWNWARD FROM TOWER END TO FACE PIPE END.
- 2. UPPER PIVOTING PLATE (ITEM 4) HAS THREE HOLES ON EACH SIDE AND UPPER LEG CLAMP PLATE (ITEM 5) HAS TWO HOLES ON EACH SIDE FOR TAPER ADJUSTMENT.
- 3. INSTALL PRODUCT EXACTLY AS SHOWN IN DRAWING, WITH ALL BOLTS FACING UPWARDS.

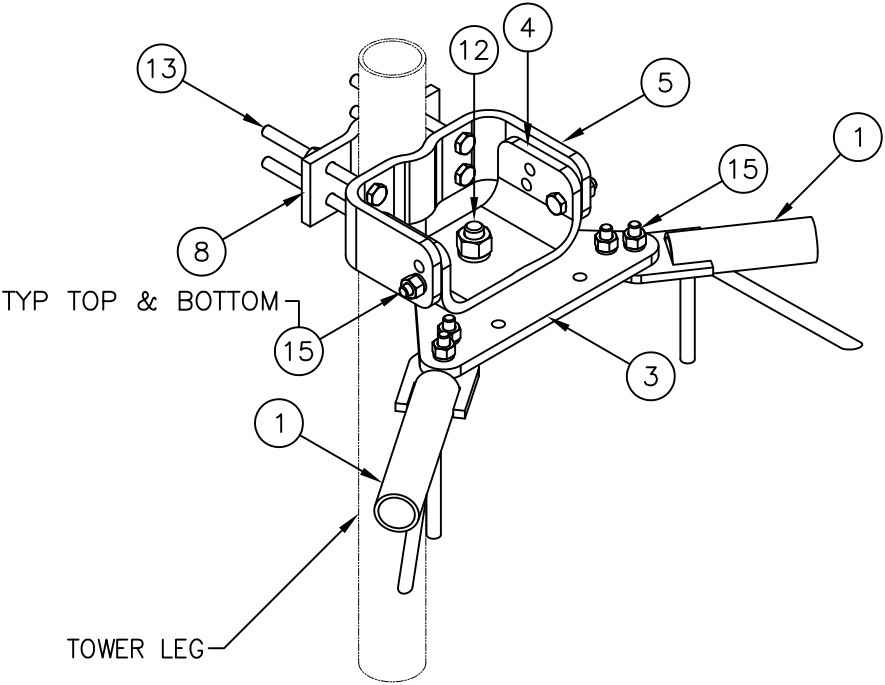
UNLESS OTHERWISE SPECIFIED ALL DIMENSIONS INCLUDE FINISHES AND ARE IN INCHES					MATERIAL:										12' EHD V-BOOM ASSEMBLY W/TIEBACKS (3' STANDOFF) W/NO ANTENNA MOUNTING PIPES									
TOLERANCES: FRACTIONS ± 1/16" ANGLES ± 1/2 DEG. DECIMALS ± .010"					TOLERANCES DO NOT APPLY TO RAW MATERIAL																			
										<div>CONFIDENTIAL</div> <p>This document and the information contained herein is the confidential trade secret property of Sabre Communications Corporation ("Sabre") and must not be reproduced, copied or used, in whole or in part, for any purpose without the prior written consent of Sabre.</p> <p>© 2016 Sabre Communications Corporation. All rights reserved.</p>														
1	10/19/16	KLE	DEL	ADDED INSTALLATION NOTES																				
REV	DATE	DRW	CHK	DESCRIPTION																				



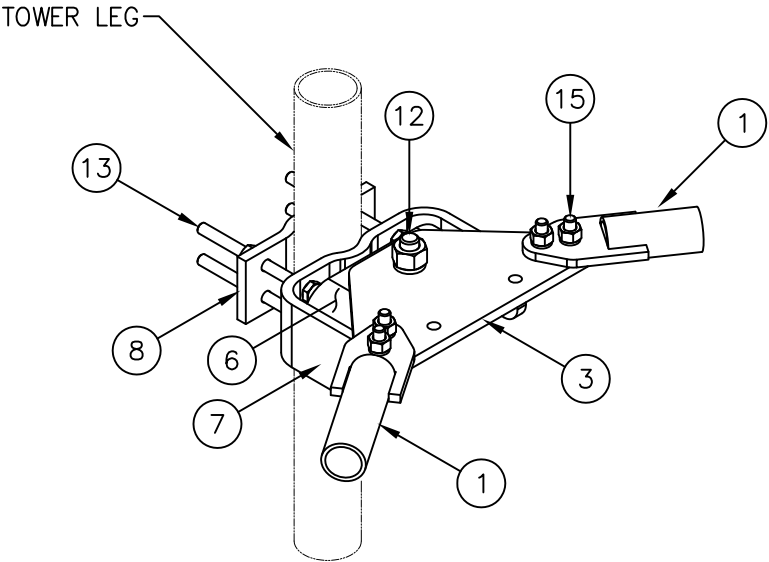
SIDE VIEW

MOUNTING OPTIONS
SHOWING MOUNTING PIPE PLACEMENTS

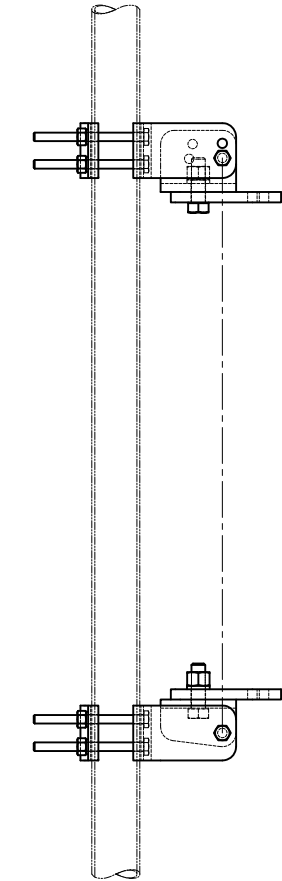
UNLESS OTHERWISE SPECIFIED ALL DIMENSIONS INCLUDE FINISHES AND ARE IN INCHES					MATERIAL:										12' EHD V-BOOM ASSEMBLY W/TIEBACKS (3' STANDOFF) W/NO ANTENNA MOUNTING PIPES									
TOLERANCES: FRACTIONS ± 1/16" ANGLES ± 1/2 DEG. DECIMALS ± .010"					TOLERANCES DO NOT APPLY TO RAW MATERIAL																			
										<div>CONFIDENTIAL</div> <p>This document and the information contained herein is the confidential trade secret property of Sabre Communications Corporation ("Sabre") and must not be reproduced, copied or used, in whole or in part, for any purpose without the prior written consent of Sabre.</p> <p>© 2016 Sabre Communications Corporation. All rights reserved.</p>														
1	10/19/16	KLE	DEL	ADDED INSTALLATION NOTES																				
REV	DATE	DRW	CHK	DESCRIPTION						DATE		02/29/16		SIZE	DRAWING NO. C10857007C		REV	1						
										DRAWN BY		WRF												
												CHECKED BY		KLE				SCALE		PAGE				
																		None		2 OF 3				



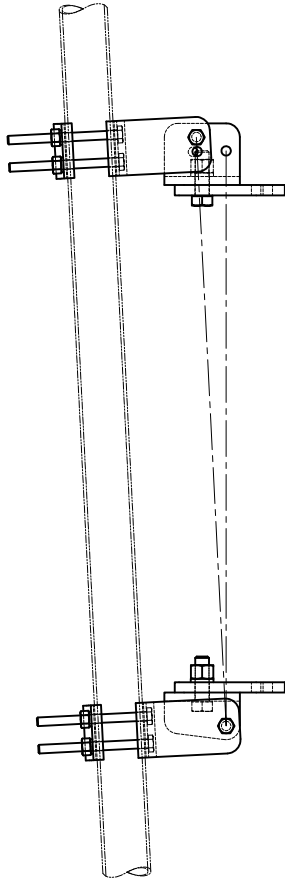
UPPER LEG MOUNTING DETAIL



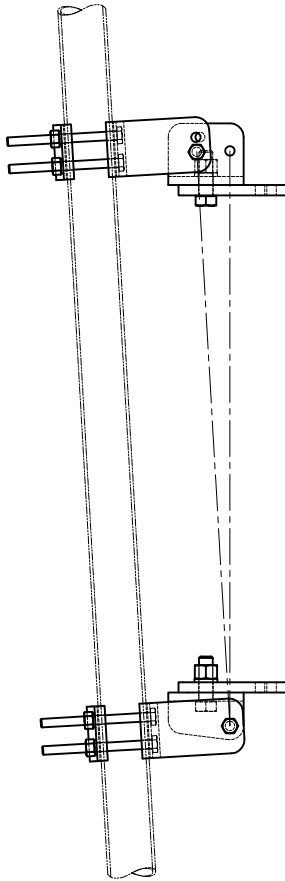
LOWER LEG MOUNTING DETAIL



STRAIGHT
TOWER SECTION

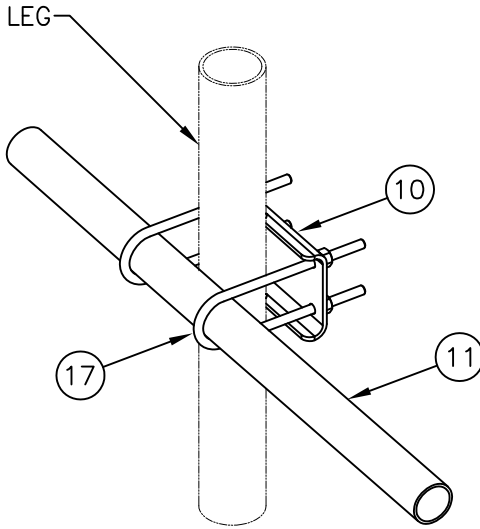


TAPERED
1'-9 IN 20' SLOPE

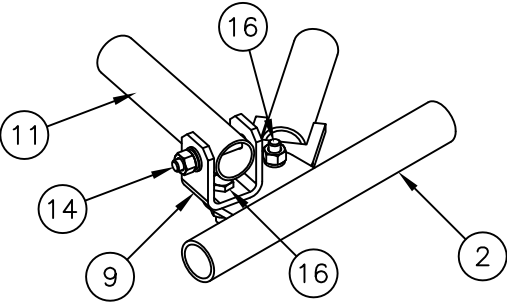


TAPERED
2' IN 20' SLOPE

-----PIVOTING OPTIONS-----



TIE BACK DETAIL
AT TOWER LEG



TIE BACK DETAIL
AT ANTENNA MOUNTING FRAME

UNLESS OTHERWISE SPECIFIED
ALL DIMENSIONS INCLUDE
FINISHES AND ARE IN INCHES
TOLERANCES: FRACTIONS $\pm 1/16"$
ANGLES $\pm 1/2$ DEG.
DECIMALS $\pm .010"$

MATERIAL:

TOLERANCES DO NOT APPLY
TO RAW MATERIAL

Sabre Industries™
Towers and Poles

CONFIDENTIAL


This document and the information
contained herein is the confidential trade
secret property of Sabre Communications
Corporation ("Sabre") and must not be
reproduced, copied or used, in whole or in
part, for any purpose without the prior
written consent of Sabre.
© 2016 Sabre Communications Corporation.
All rights reserved.

12' EHD V-BOOM ASSEMBLY W/TIEBACKS
(3' STANDOFF)
W/NO ANTENNA MOUNTING PIPES

REV	DATE	DRW	CHK	DESCRIPTION
1	10/19/16	KLE	DEL	ADDED INSTALLATION NOTES

		SIZE B	DRAWING NO. C10857007C		REV 1
DATE	02/29/16				
DRAWN BY	WRF		SCALE None	PAGE 3 OF 3	
CHECKED BY	KLE				

ISOMETRIC VIEW

UNLESS OTHERWISE SPECIFIED ALL DIMENSIONS INCLUDE FINISHES AND ARE IN INCHES				MATERIAL:		<div></div>		4 1/2" O.D. PIPE MOUNT ASSEMBLY FOR MONOPOLES (FITS 10" TO 40" DIAMETER)									
TOLERANCES: FRACTIONS ± 1/16" ANGLES ± 1/2 DEG. DECIMALS ± .010"				TOLERANCES DO NOT APPLY TO RAW MATERIAL													
						<div>CONFIDENTIAL</div> <p>This document and the information contained herein is the confidential trade secret property of Sabre Communications Corporation ("Sabre") and must not be reproduced, copied or used, in whole or in part, for any purpose without the prior written consent of Sabre.</p> <p>© 2016 Sabre Communications Corporation. All rights reserved.</p>				SIZE		DRAWING NO.		REV			
								DATE		01/26/16		B		C10899050		1	
								DRAWN BY		WRF							
								CHECKED BY		DLW							
1	02/03/17	WRF	KLE	COLLAR WAS C10112300													
REV	DATE	DRW	CHK	DESCRIPTION													