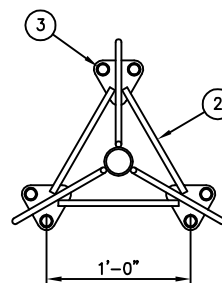


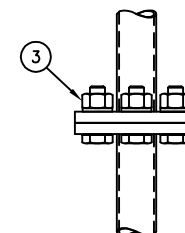
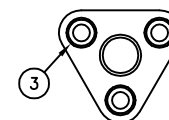
**ELEVATION VIEW**

**NOTES:**

1. THE PART NUMBER OF THE TOWER SECTION IS LOCATED AT THE TOP OF EACH SECTION.
2. IT IS IMPORTANT TO ALIGN THESE PART NUMBERS ON THE SAME LEG FOR THE ENTIRE HEIGHT OF THE TOWER.



**PLAN VIEW**



**SECTION BASE  
SPLICE DETAIL**

**C30904023 TAPERED TOP SECTION (MODEL 1200 TLWD)**

ITEM	QTY.	PART NO.	DESCRIPTION	WEIGHT
1.	1	T1200004	7'-3 TOWER SECTION (MODEL 1200 TLWD)	59.3#
2.	1	CW00212	WELDMENT, TAPERED TOP STUB	21.0#
3.	15	C40026004	BOLT ASSEMBLY, 1/2"Ø X 1 3/4 A325	3.5#
TOTAL WEIGHT				83.8#

UNLESS OTHERWISE SPECIFIED ALL DIMENSIONS INCLUDE FINISHES AND ARE IN INCHES		MATERIAL:	
TOLERANCES: FRACTIONS ± 1/16" ANGLES ± 1/2 DEG. DECIMALS ± .010"		TOLERANCES DO NOT APPLY TO RAW MATERIAL	
REV	DATE	DRW/CHK	DESCRIPTION
1	03/30/07	ESB/BSP	ADDED NOTES.



**CONFIDENTIAL**  
This document and the information contained herein is the confidential trade secret property of Sabre Communications Corporation ("Sabre") and must not be reproduced, copied or used, in whole or in part, for any purpose without the prior written consent of Sabre.  
© 2006 Sabre Communications Corporation. All rights reserved.

**10 FT TAPERED TOP TOWER SECTION  
(1.315" O.D. LEG - 3/8"Ø BRACING)  
MODEL 1200 TLWD**

DATE		04/07/04	SIZE	B	DRAWING NO.	C30904023	REV	1
DRAWN BY		WRF	SCALE		None		PAGE	
CHECKED BY		RWM					1 OF 1	