

**\*\* C10852501 \*\***

**C10852501 8' ULTRA-BOOM ASSEMBLY (3' STANDOFF)**

(1)	C10014001	3' STANDOFF KIT, ULTRA-BOOM	183
(1)	CK00090	ULTRA-BOOM KIT	75
(1)		MISCELLANEOUS MATERIAL	70
<b>TOTAL WEIGHT</b>			<b>328</b>

**C10014001 KIT LIST OF MATERIAL (3' STANDOFF)**

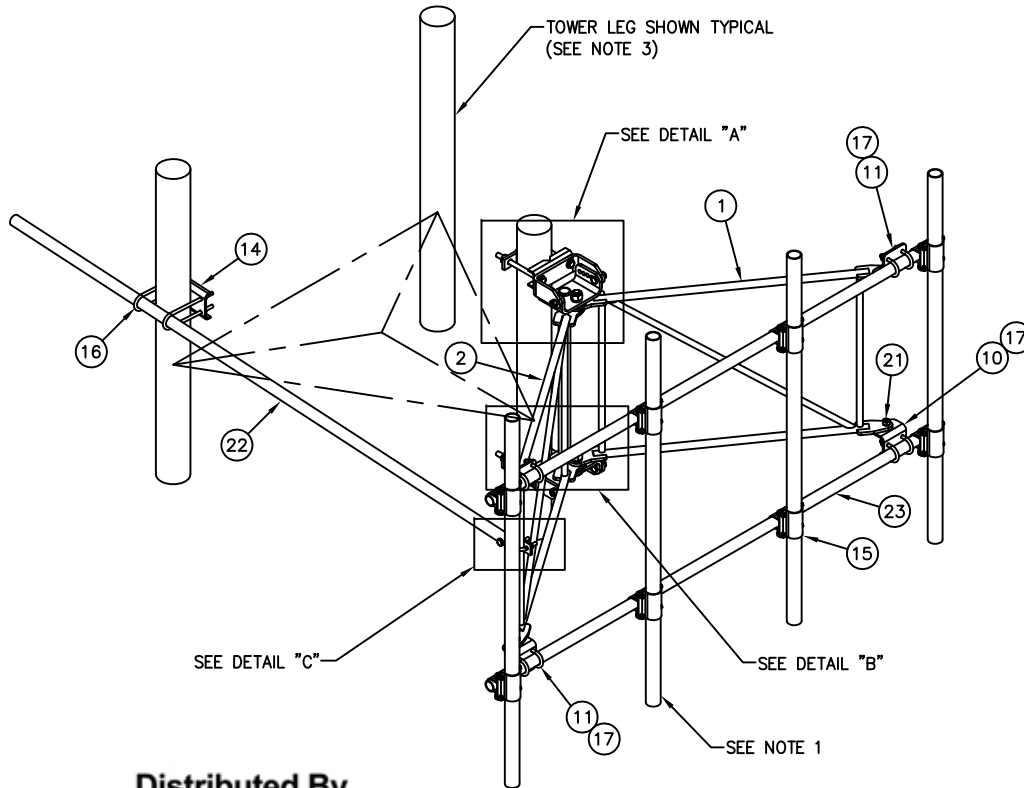
ITEM	QTY.	PART NO.	DESCRIPTION	WEIGHT
1.	1	CW00872	WELDMENT, 3' STANDOFF	65
2.	1	CW00874	WELDMENT, 3' STANDOFF	65
3.	1	CW00873	WELDMENT, T-BOOM PIVOT	28
4.	2	CS01565	PLATE, T-BOOM CONNECTION	17
5.	2	CS02233	PLATE, SPACER	2
6.	2	C40026076	BOLT ASSEMBLY, 1 $\phi$ X 3 3/4 A325	4
7.	4	C40026024	BOLT ASSEMBLY, 5/8 $\phi$ X 2 1/4 A325	2
<b>TOTAL WEIGHT</b>				<b>183</b>

**CK00090 KIT LIST OF MATERIAL (ULTRA-BOOM)**

ITEM	QTY.	PART NO.	DESCRIPTION	WEIGHT
8.	2	CS01998	PLATE, MOUNTING BRACKET	6
9.	2	CS01361	PLATE, 2 HOLE ADAPTER CLAMP	5
10.	2	CS02234	ANGLE, FACE (FORMED)	6
11.	2	CS02235	ANGLE, FACE (FORMED)	6
12.	1	CS02236	FLAT, TIEBACK	1
13.	1	CS02237	PIPE, SPACER	1
14.	1	CS01909	PLATE, TIEBACK SUPPORT	4
15.	8	C40204100	CROSSOVER CLAMP, 1.9 $\phi$ TO 2 3/8 $\phi$	32
16.	2	C40034081	U-BOLT ASSEMBLY, 1/2 $\phi$ X 2 9/16 C-C	3
17.	8	C40034060	U-BOLT ASSEMBLY, 1/2 $\phi$ X 2 9/16 C-C	6
18.	1	C40034063	U-BOLT ASSEMBLY, 1/2 $\phi$ X 1 13/16 C-C	1
19.	4	C40140001	BOLT ASSEMBLY, 3/4 X 10 A307 W/NUT, LKW, FLW	1
20.	1	C40026029	BOLT ASSEMBLY, 5/8 X 3 1/2 A325	1
21.	4	C40026023	BOLT ASSEMBLY, 5/8 X 2 A325	2
<b>TOTAL WEIGHT</b>				<b>75</b>

**LIST OF MISCELLANEOUS MATERIAL**

ITEM	QTY.	PART NO.	DESCRIPTION	WEIGHT
22.	1	CS01910	PIPE, TIEBACK	23
23.	2	CS02231	PIPE, 1.90 $\phi$ X 0.148 X 8'-6	47
<b>TOTAL WEIGHT</b>				<b>70</b>



**Distributed By**  
**Rosenberger**  
 Rosenberger Site Solutions, LLC  
 Call 1.866.598.5250 or visit [www.RLSS.us](http://www.RLSS.us)

**ISOMETRIC VIEW**

**NOTES:**

- 2 3/8" O.D. MOUNTING PIPES MUST BE PURCHASED SEPARATELY. CROSSOVER CLAMPS FOR MOUNTING THE PIPES ARE INCLUDED ABOVE
- QUANTITIES SHOWN IN LISTS OF MATERIAL ARE FOR ONE (1) ULTRA-BOOM ONLY.
- THIS ULTRA-BOOM WILL MOUNT TO THE FOLLOWING:
  - 1 1/2 $\phi$  TO 5 9/16 $\phi$  ROUND LEG
  - 2 1/2" X 2 1/2" TO 4" X 4" 60° ANGLE LEG

UNLESS OTHERWISE SPECIFIED ALL DIMENSIONS INCLUDE FINISHES AND ARE IN INCHES				MATERIAL:			
TOLERANCES: FRACTIONS $\pm 1/16"$ ANGLES $\pm 1/2$ DEG. DECIMALS $\pm .010"$				TOLERANCES DO NOT APPLY TO RAW MATERIAL			
REV	DATE	DRW/CHK	DESCRIPTION				
1	1/13/10	MLC/MC	REDRAWN IN AUTODAD				



**Sabre**  
Towers & Poles

**CONFIDENTIAL**

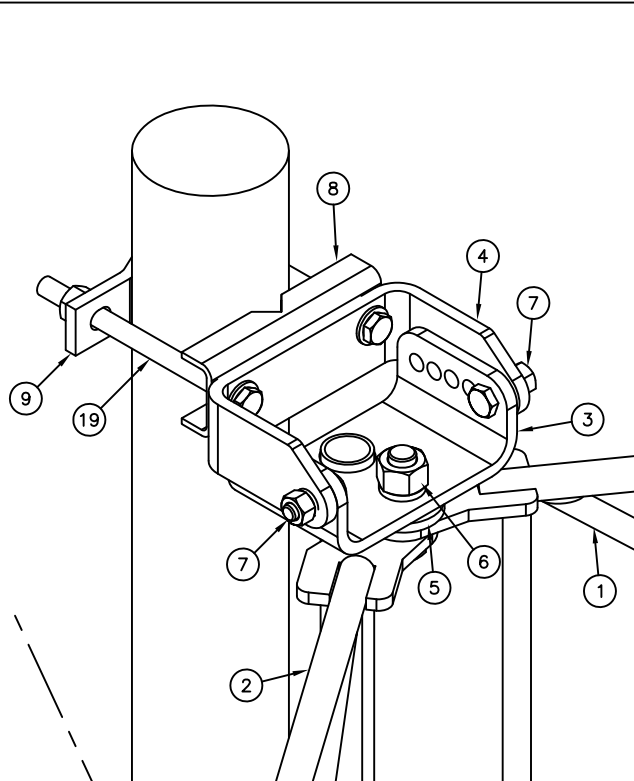
This document and the information contained herein is the confidential trade secret property of Sabre Communications Corporation ("Sabre") and must not be reproduced, copied or used, in whole or in part, for any purpose without the prior written consent of Sabre.

© 2010 Sabre Communications Corporation. All rights reserved.

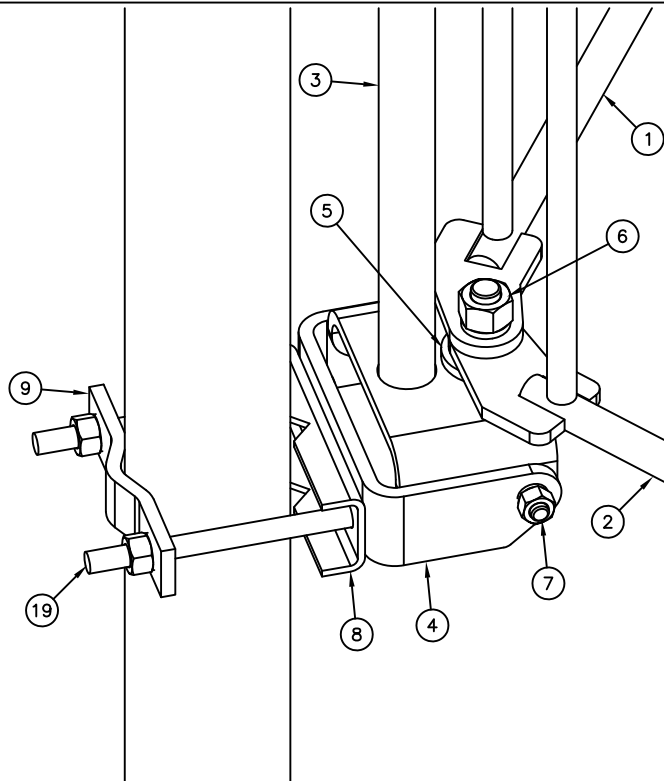
**8' ULTRA-BOOM W/TIEBACK  
 (3' STANDOFF)  
 ANTENNA MOUNTING HARDWARE  
 W/NO ANTENNA MOUNTING PIPES**

DATE		SIZE	DRAWING NO.	REV
10/16/09		B	C10852501	1
DRAWN BY		SCALE		PAGE
JV		None		1 OF 2
CHECKED BY				
WMN				

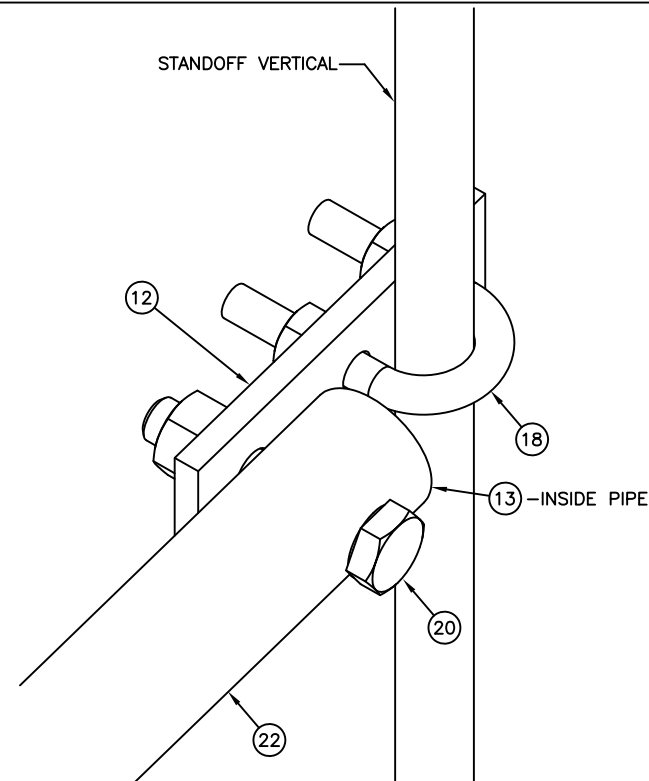
\*\* C10852501 \*



DETAIL "A"



DETAIL "B"



DETAIL "C"

UNLESS OTHERWISE SPECIFIED ALL DIMENSIONS INCLUDE FINISHES AND ARE IN INCHES				MATERIAL:			
TOLERANCES: FRACTIONS $\pm 1/16"$ ANGLES $\pm 1/2$ DEG. DECIMALS $\pm .010"$				TOLERANCES DO NOT APPLY TO RAW MATERIAL			
REV	DATE	DRW	CHK	DESCRIPTION			
1	1/13/10	MLC	MC	REDRAWN IN AUTODAD			



**CONFIDENTIAL**  
This document and the information contained herein is the confidential trade secret property of Sabre Communications Corporation ("Sabre") and must not be reproduced, copied or used, in whole or in part, for any purpose without the prior written consent of Sabre.  
© 2010 Sabre Communications Corporation. All rights reserved.

8' ULTRA-BOOM W/TIEBACK  
(3' STANDOFF)  
ANTENNA MOUNTING HARDWARE  
W/NO ANTENNA MOUNTING PIPES

		SIZE	DRAWING NO.		REV
DATE	10/16/09	B	C10852501		1
DRAWN BY	JV			SCALE	PAGE
CHECKED BY	WMN			None	2 OF 2