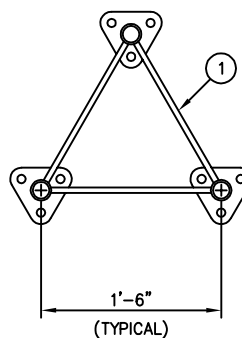


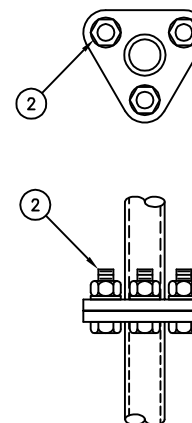
ELEVATION VIEW

NOTES:

1. THE PART NUMBER OF THE TOWER SECTION IS LOCATED AT THE TOP OF EACH SECTION.
2. IT IS IMPORTANT TO ALIGN THESE PART NUMBERS ON THE SAME LEG FOR THE ENTIRE HEIGHT OF THE TOWER.



PLAN VIEW



SPLICE DETAIL

C30904026 10 FT. TOWER SECTION (MODEL 1800 TLWD)

ITEM	QTY.	PART NO.	DESCRIPTION	WEIGHT
1.	1	T1800001	10 FT. TOWER SECTION (MODEL 1800 TLWD)	135.7#
2.	9	C40026005	BOLT ASSEMBLY, 1/2 X 2 A325	2.2#
TOTAL WEIGHT				137.9#

UNLESS OTHERWISE SPECIFIED ALL DIMENSIONS INCLUDE FINISHES AND ARE IN INCHES			MATERIAL:		
TOLERANCES: FRACTIONS $\pm 1/16"$ ANGLES $\pm 1/2$ DEG. DECIMALS $\pm .010"$			TOLERANCES DO NOT APPLY TO RAW MATERIAL		
REV	DATE	DRW/CHK	DESCRIPTION		
1	03/30/07	ESB/SP	ADDED NOTES.		



CONFIDENTIAL
This document and the information contained herein is the confidential trade secret property of Sabre Communications Corporation ("Sabre") and must not be reproduced, copied or used, in whole or in part, for any purpose without the prior written consent of Sabre.
© 2006 Sabre Communications Corporation. All rights reserved.

**10 FT. TOWER SECTION
(1.660" O.D. LEG - 1/2"Ø BRACING)
MODEL 1800 TLWD**

		SIZE B	DRAWING NO. C30904026		REV 1
DATE	11/6/03				
DRAWN BY	KLE				
CHECKED BY	DLW			SCALE None	PAGE 1 OF 1