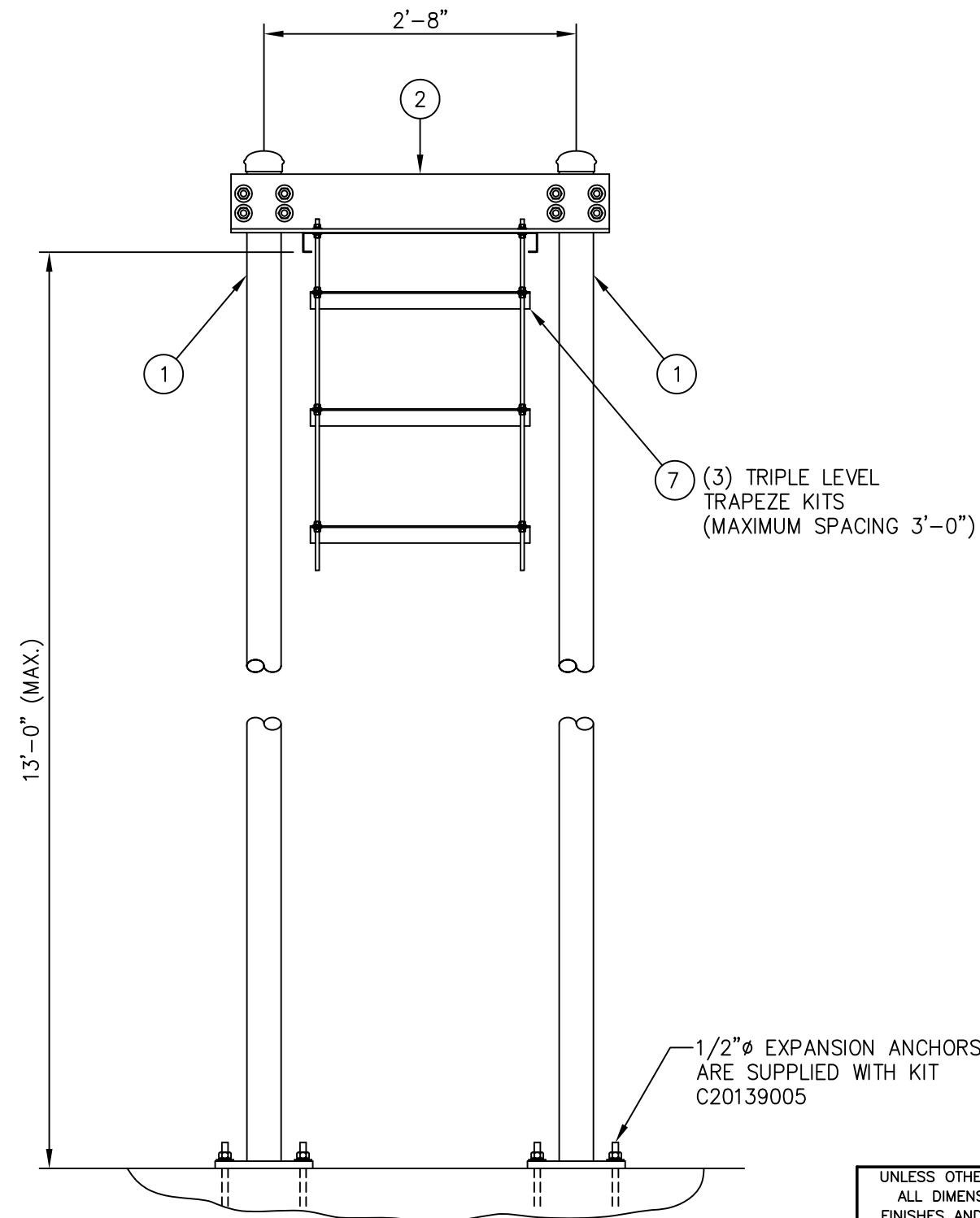


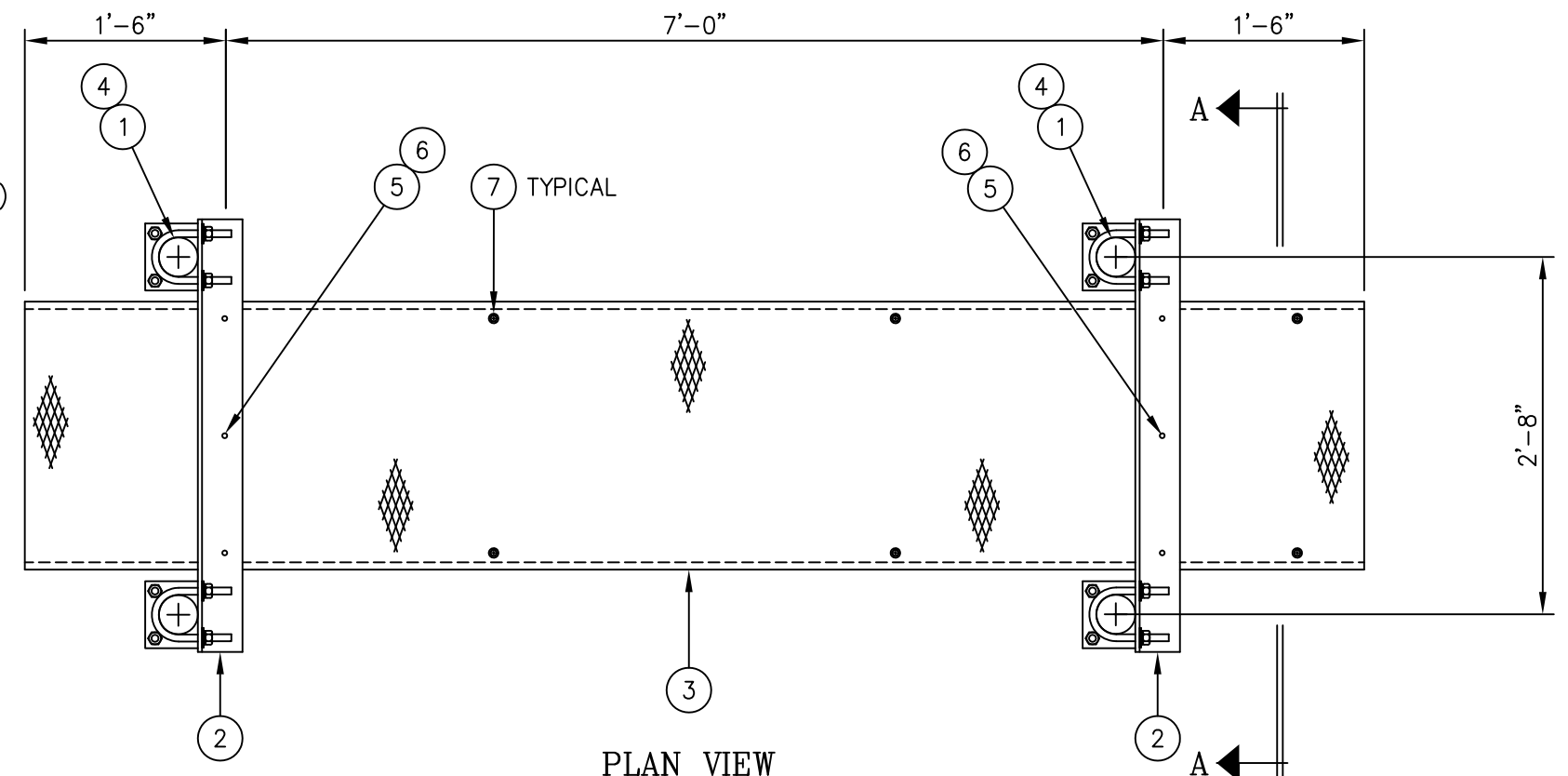


Distributed By
Rosenberger
Rosenberger Site Solutions, LLC
visit www.RosenbergerOnline.us


C20136068 GRIP STRUT WAVEGUIDE BRIDGE KIT				
ITEM	QTY.	PART. NO.	DESCRIPTION	WEIGHT
1.	4	C20139005	WAVEGUIDE BRIDGE POST W/PIPE CAP & ANCHORS	467.6#
2.	2	CS00053	WAVEGUIDE BRIDGE SUPPORT ANGLE	82.6#
3.	1	C20137002	GRIP STRUT WAVEGUIDE BRIDGE, 24" X 10'-0	74.0#
4.	8	C40034028	U-BOLT ASSEMBLY, 5/8" X 4 3/16" C/C	15.4#
5.	6	C40012017	STAINLESS STEEL BOLT ASSY, 3/8 X 2	0.6#
6.	12	C40046001	FENDER WASHER, 7/16 I.D. X 1 1/2 O.D.	0.6#
7.	3	C20145006	TRIPLE LEVEL TRAPEZE KIT	42.9#
TOTAL WEIGHT				683.7#



SECTION A-A



NOTE:
THIS WAVEGUIDE BRIDGE ASSEMBLY IS NOT DESIGNED TO
SUPPORT PERSONNEL OR EQUIPMENT.

UNLESS OTHERWISE SPECIFIED ALL DIMENSIONS INCLUDE FINISHES AND ARE IN INCHES				MATERIAL:			GRIP STRUT WAVEGUIDE BRIDGE WITH 14'-0" BASE PLATE COLUMNS (24" WIDE X 10'-0") TRIPLE LEVEL TRAPEZE				
TOLERANCES: FRACTIONS ± 1/16" ANGLES ± 1/2 DEG. DECIMALS ± .010"				TOLERANCES DO NOT APPLY TO RAW MATERIAL							
						CONFIDENTIAL This document and the information contained herein is the confidential trade secret property of Sabre Communications Corporation ("Sabre") and must not be reproduced, copied or used, in whole or in part, for any purpose without the prior written consent of Sabre. © 2006 Sabre Communications Corporation. All rights reserved.			SIZE	DRAWING NO.	REV
							DATE	6/10/03	B	C20136068	0
							DRAWN BY	KLE			
							CHECKED BY	PSB			
REV	DATE	DRW	CHK	DESCRIPTION							