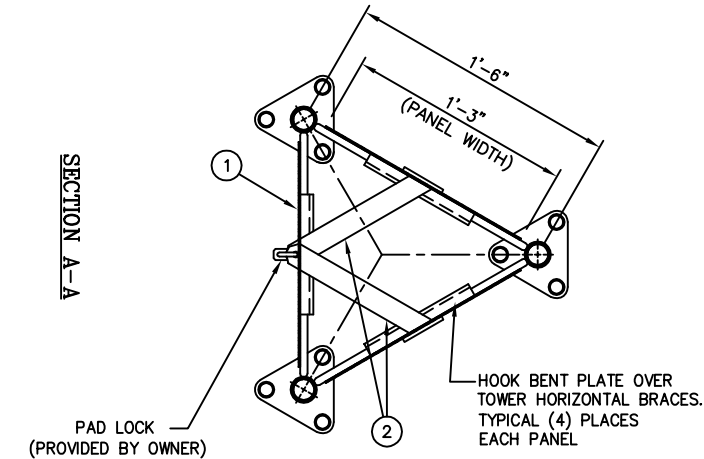
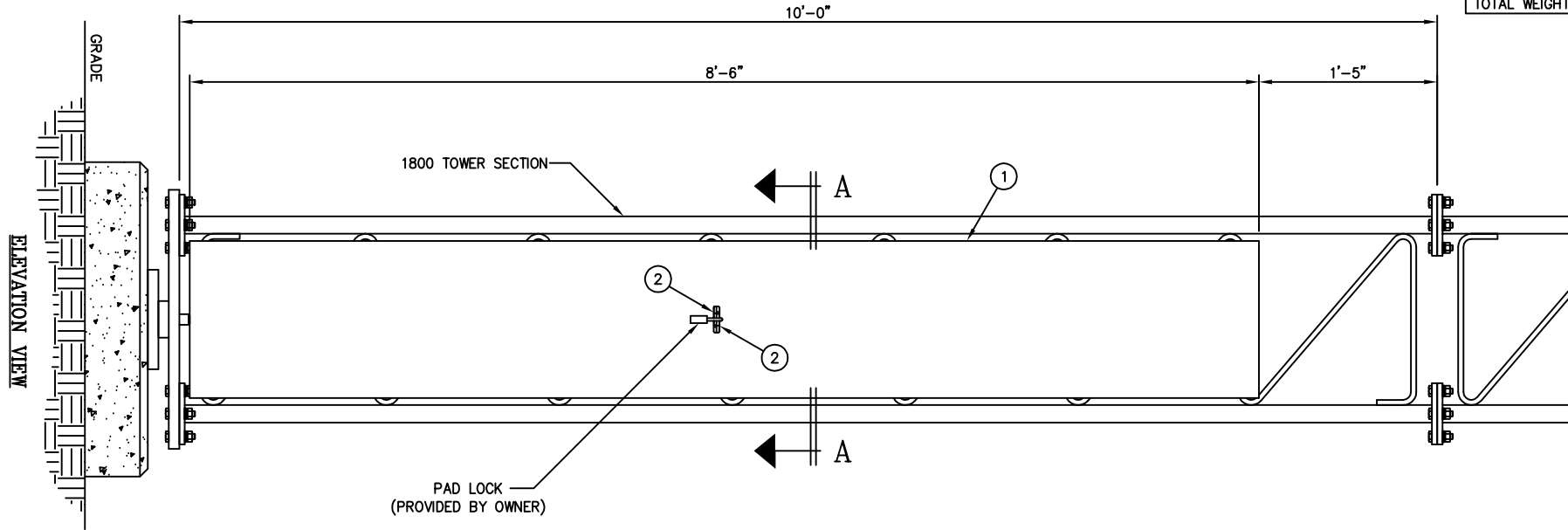


# C30904276 BOLT-ON ANTI-CLIMB INSTALLATION FOR 1800 TOWER

ITEM	QTY.	PART NO.	DESCRIPTION	WEIGHT
1.	3	CW00221	WELDMNT, 1800 ANTI-CLIMB PANEL	156
2.	2	CW00219	WELDMNT, 1800 LOCKING BAR	3
TOTAL WEIGHT				159



## NOTE

ANTI-CLIMB PANELS ARE TYPICAL EACH TOWER FACE.

UNLESS OTHERWISE SPECIFIED ALL DIMENSIONS INCLUDE FINISHES AND ARE IN INCHES		MATERIAL:	
TOLERANCES: FRACTIONS $\pm 1/16"$ ANGLES $\pm 1/2$ DEG. DECIMALS $\pm .010"$		TOLERANCES DO NOT APPLY TO RAW MATERIAL	
REV	DATE	DRW/CHK	DESCRIPTION
1	11/14/08	WRF/MJC	UPDATED ITEM 2



**CONFIDENTIAL**  
This document and the information contained herein is the confidential trade secret property of Sabre Communications Corporation ("Sabre") and must not be reproduced, copied or used, in whole or in part, for any purpose without the prior written consent of Sabre.  
© 2008 Sabre Communications Corporation. All rights reserved.

## BOLT-ON ANTI-CLIMB INSTALLATION FOR ALL 1800 TOWERS

DATE	04/22/04	SIZE	B	DRAWING NO.	C30904276	REV	1
DRAWN BY	WRF			SCALE	None	PAGE	1 OF 1
CHECKED BY	CHH						