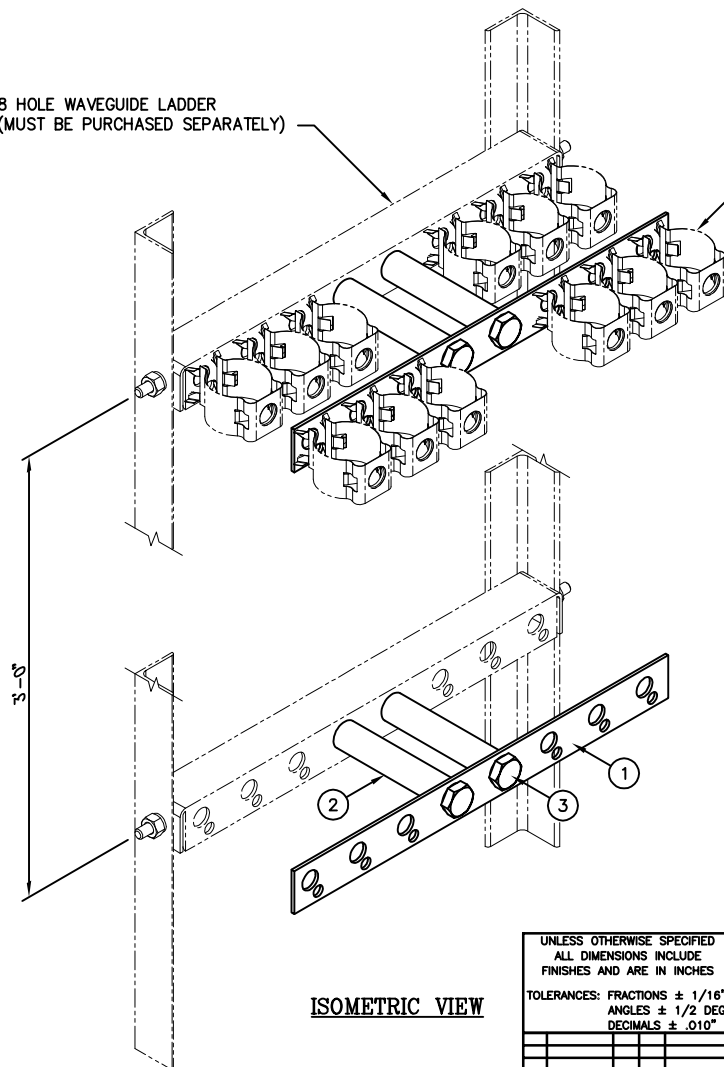
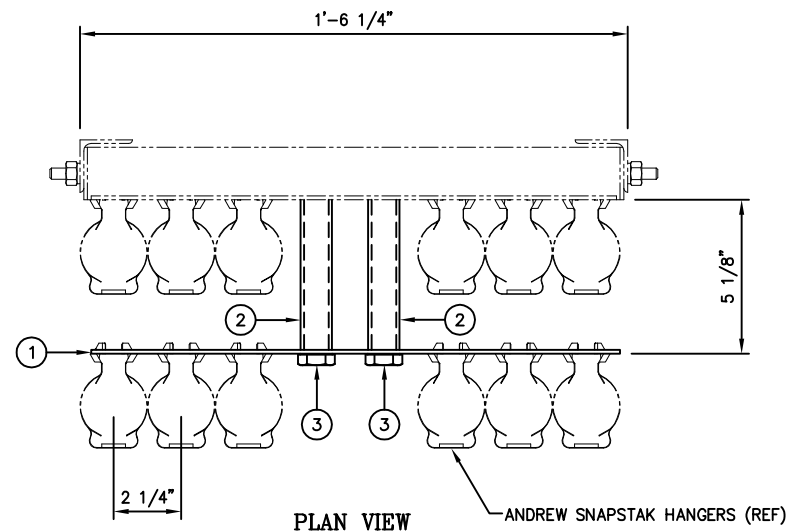


8 HOLE WAVEGUIDE LADDER
(MUST BE PURCHASED SEPARATELY)



STANDOFF CAN SUPPORT AN
ADDITIONAL SIX LINES PER LADDER

C20129010 6 ON 6 STACKER KIT (7 RUNGS)				
ITEM	QTY.	PART NO.	DESCRIPTION	WEIGHT
1.	7	CS00152	8 HOLE WAVEGUIDE LADDER STACKER PLATE	8
2.	14	CS00154	PIPE, SPACER 3/4" Ø NOM. (SCH. 40) X 0'-5"	7
3.	14	C40026038	BOLT ASSEMBLY, 5/8" Ø X 6 1/2" A325	15
TOTAL WEIGHT				30



FIELD NOTE:

THIS WAVEGUIDE STANDOFF ASSEMBLY IS NOT TO BE USED AS A CLIMBING APPARATUS.

UNLESS OTHERWISE SPECIFIED ALL DIMENSIONS INCLUDE FINISHES AND ARE IN INCHES		MATERIAL:	
TOLERANCES: FRACTIONS ± 1/16" ANGLES ± 1/2 DEG. DECIMALS ± .010"		TOLERANCES DO NOT APPLY TO RAW MATERIAL	
REV	DATE	DRW/CHK	DESCRIPTION
1	08/26/08	WRF/HMN	ADDED ISOMETRIC VIEW



CONFIDENTIAL
This document and the information
contained herein is the confidential trade
secret property of Sabre Communications
Corporation ("Sabre") and must not be
reproduced, copied or used, in whole or in
part, for any purpose without the prior
written consent of Sabre.
© 2006 Sabre Communications Corporation.
All rights reserved.

6 ON 6
20 FT. WAVEGUIDE LADDER
STACKER KIT (7 RUNGS)
(FOR 8 HOLE RUNG - 7/16" Ø & 3/4" Ø)

DATE		SIZE	DRAWING NO.	REV
08/20/03		B	C20129010	1
DRAWN BY		KLE		SCALE
CHECKED BY		DLW		PAGE
				None
				1 OF 1