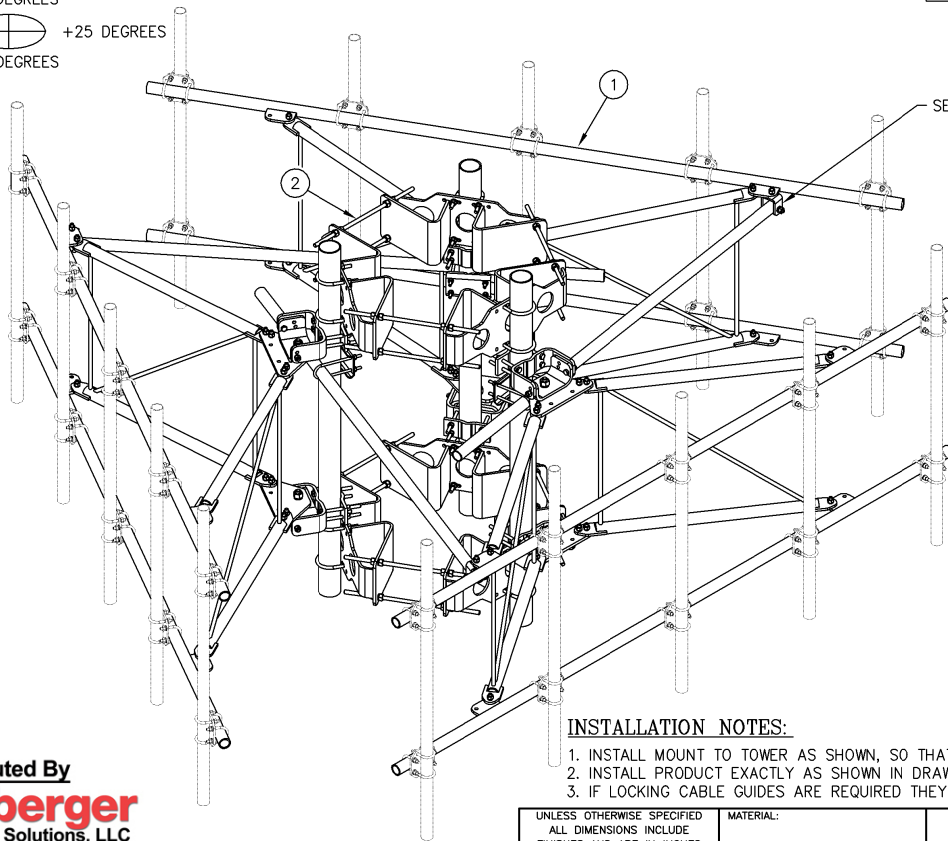


# TIEBACK ANGLE RANGE DETAIL

+/- 15 DEGREES VERTICAL  
+/- 25 DEGREES HORIZONTAL

+15 DEGREES

-25 DEGREES  
-15 DEGREES



ISOMETRIC VIEW

## INSTALLATION NOTES:

1. INSTALL MOUNT TO TOWER AS SHOWN, SO THAT WELDED STANDOFF DIAGONAL IS SLOPING DOWNWARD FROM TOWER END TO FACE PIPE END.
2. INSTALL PRODUCT EXACTLY AS SHOWN IN DRAWING, WITH ALL BOLTS FACING UPWARDS.
3. IF LOCKING CABLE GUIDES ARE REQUIRED THEY MUST BE PURCHASED SEPARATELY (SEE PAGE 3).

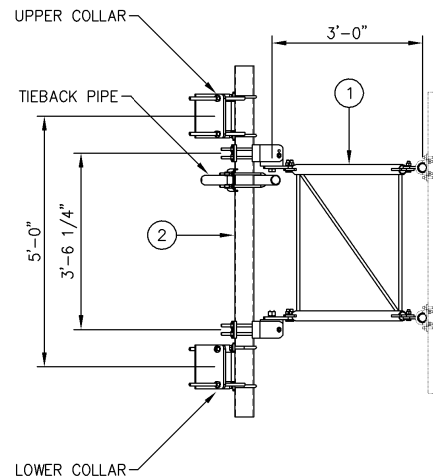
UNLESS OTHERWISE SPECIFIED ALL DIMENSIONS INCLUDE FINISHES AND ARE IN INCHES		MATERIAL:	
TOLERANCES: FRACTIONS $\pm 1/16"$ ANGLES $\pm 1/2$ DEG. DECIMALS $\pm .010"$		TOLERANCES DO NOT APPLY TO RAW MATERIAL	
REV	DATE	DRW/CHK	DESCRIPTION
1	05/04/20	WRF/EK	UPDATED TO CURRENT STANDARDS ADDED INSTALLATION NOTES AND ADDED PAGE 3

**Sabre Industries™**  
Towers and Poles

**CONFIDENTIAL**  
This document and the information contained herein is the confidential trade secret property of Sabre Communications Corporation ("Sabre") and must not be reproduced, copied or used, in whole or in part, for any purpose without the prior written consent of Sabre.  
© 2018 Sabre Communications Corporation. All rights reserved.

## C10857802 12' HD V-BOOM ASSEMBLIES W/TIEBACK

ITEM	QTY.	PART NO.	DESCRIPTION	WEIGHT
1.	3	C10857001C	12' HD V-BOOM ASSEMBLY W/TIE BACK	1386
2.	1	C10899055	4 1/2" O.D. MONOPOLE PIPE MOUNT ASSEMBLY	994
TOTAL WEIGHT				2380



VIEW A-A  
FROM PAGE 2

Distributed By

**Rosenberger**  
Rosenberger Site Solutions, LLC  
visit [www.RosenbergerOnline.us](http://www.RosenbergerOnline.us)

12' HD V-BOOM ASSEMBLIES W/TIEBACK  
(3' STANDOFF)  
ON MONOPOLE PIPE MOUNT ASSEMBLY  
W/NO ANTENNA MOUNTING PIPES

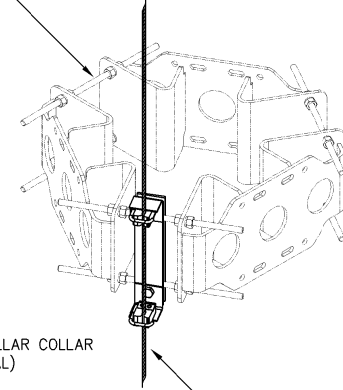
DATE		9/24/18	SIZE	B	DRAWING NO.	C10857802	REV	1
DRAWN BY		WRF	SCALE		None		PAGE	
CHECKED BY		WMN					1 OF 3	

## NOTES:

1. SEE DRAWING C10899055 FOR INSTALLATION OF 4 1/2" O.D. MONOPOLE PIPE MOUNT ASSEMBLY.
2. SEE DRAWING C10857001C FOR INSTALLATION OF 12' V-BOOM ASSEMBLY W/TIEBACK.
3. MOUNTING PIPES & CROSSOVER PLATE KITS MUST BE PURCHASED SEPARATELY.
4. QUANTITIES SHOWN IN LIST OF MATERIAL ARE FOR A COMPLETE (3) SECTOR INSTALLATION.
5. THE TIEBACK IS SHOWN IN THIS POSITION AS A DEFAULT. THIS TIEBACK CAN BE CONNECTED AT ANY (1) OF THE (4) POSITIONS ON THE TABS ON THE FACE PIPE.




IF REQUIRED PLEASE ORDER THE APPROPRIATE KIT BELOW TO FIT YOUR INDIVIDUAL FIELD NEEDS.



OTHER ADDITIONAL CABLE GUIDE SUPPORTS MAY  
BE REQUIRED ABOVE AND BELOW V-BOOM SO  
THAT CABLE ALIGNMENT IS WITHIN REQUIRED LIMITS.

**Rosenberger**  
Rosenberger Site Solutions, LLC  
visit [www.RosenbergerOnline.us](http://www.RosenbergerOnline.us)

UNLESS OTHERWISE SPECIFIED ALL DIMENSIONS INCLUDE FINISHES AND ARE IN INCHES				MATERIAL:			
TOLERANCES: FRACTIONS $\pm 1/16"$ ANGLES $\pm 1/2$ DEG. DECIMALS $\pm .010"$				TOLERANCES DO NOT APPLY TO RAW MATERIAL			
						<p align="center"><b>CONFIDENTIAL</b></p> <p>This document and the information contained herein is the confidential trade secret property of Sabre Communications Corporation ("Sabre") and must not be reproduced, copied or used, in whole or in part, for any purpose without the prior written consent of Sabre.</p> <p>© 2018 Sabre Communications Corporation All rights reserved.</p>	
1	05/04/20	WRF	EK	UPDATED TO CURRENT STANDARDS			
				ADDED INSTALLATION NOTES AND ADDED PAGE 3			
REV	DATE	DRW	CHK	DESCRIPTION			

12' HD V-BOOM ASSEMBLIES W/TIEBACK  
(3' STANDOFF)  
ON MONOPOLE PIPE MOUNT ASSEMBLY  
W/NO ANTENNA MOUNTING PIPES

		SIZE B	DRAWING NO. C10857802		REV 1
DATE	09/24/18				
DRAWN BY	WRF		SCALE None	PAGE 3 OF 3	
CHECKED BY	WMN				