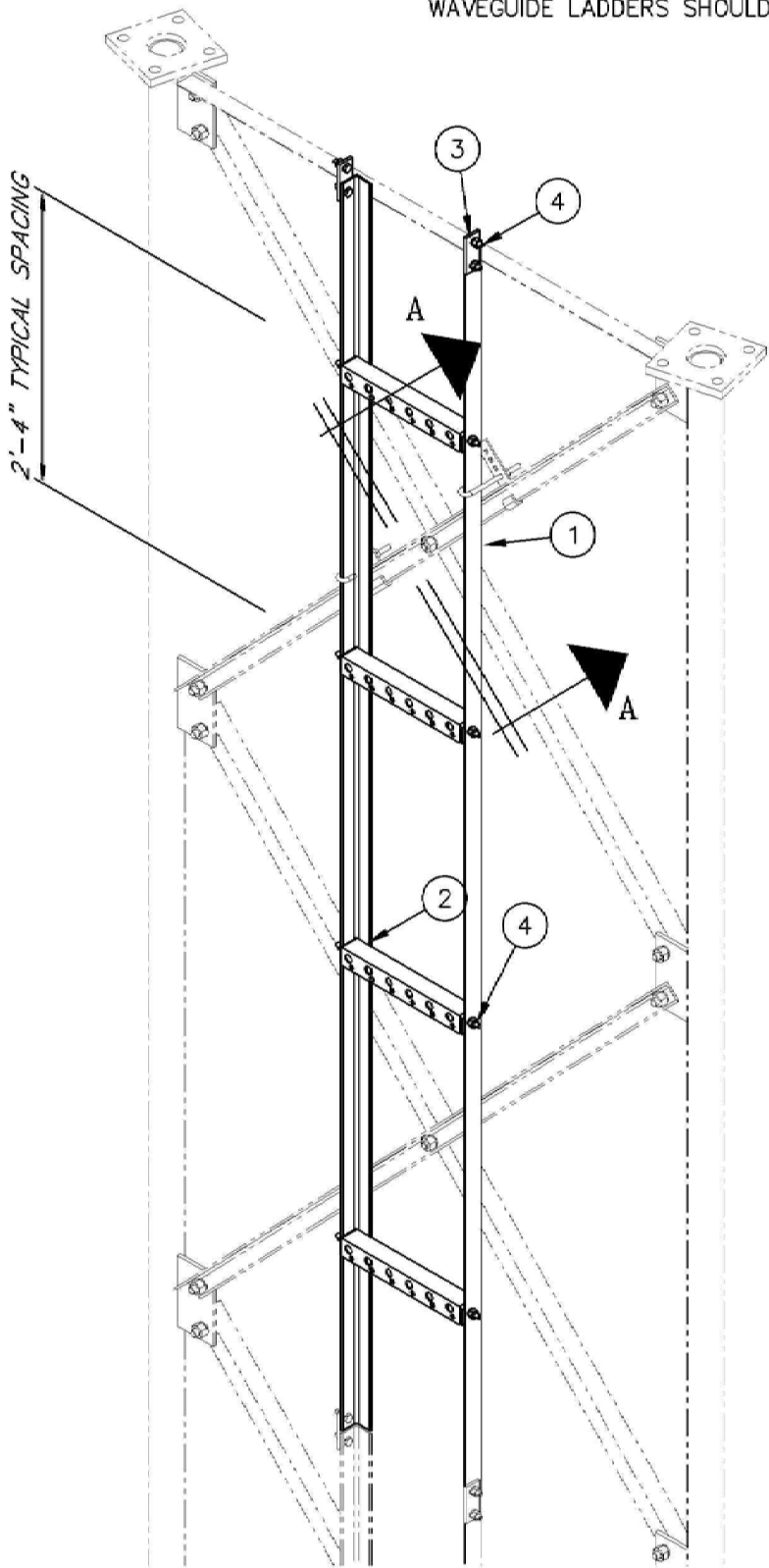


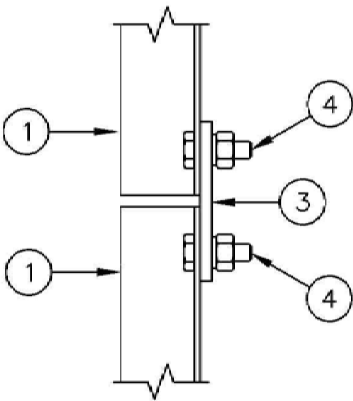


**FIELD NOTE:**

WAVEGUIDE LADDERS SHOULD NEVER BE USED AS A CLIMBING OR RIGGING DEVICE.



**ISOMETRIC VIEW**



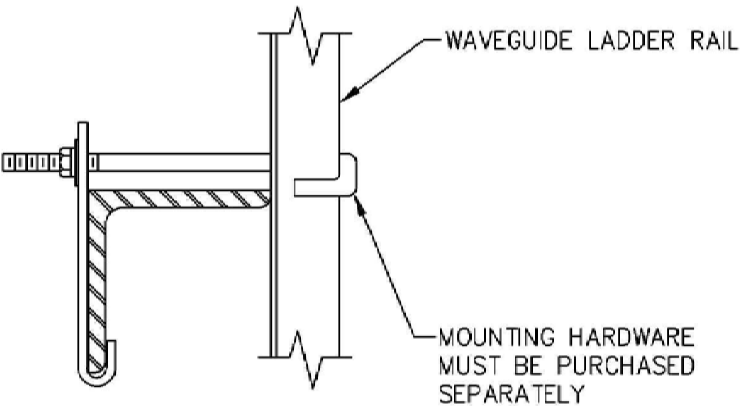
**SPLICE DETAIL**

C20128030 6 HOLE WAVEGUIDE LADDER KIT				
ITEM	QTY.	PART NO.	DESCRIPTION	WEIGHT
1.	2	CS00332	WAVEGUIDE LADDER RAIL, 10'-0"	30
2.	4	CS01619	WAVEGUIDE LADDER RUNG, 6 HOLE	8
3.	2	CS00037	SPLICE PLATE	1
4.	12	C40024004	BOLT ASSEMBLY, 3/8 X 1 1/2 GRADE 5	1
TOTAL WEIGHT				40

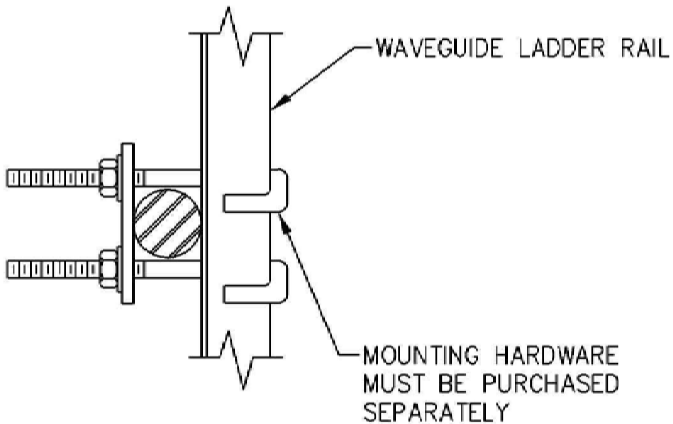
**NOTE:**

MAXIMUM SPACING OF LADDER CLIPS UP THE TOWER TO BE 10'-0".


**Distributed By**  
**Rosenberger**  
Rosenberger Site Solutions, LLC  
visit [www.RosenbergerOnline.us](http://www.RosenbergerOnline.us)



**SECTION A-A**  
(MOUNTING OPTION 1)  
(FOR ANGLE 1 1/2" TO 6")



**SECTION A-A**  
(MOUNTING OPTION 2)  
(FOR ROUNDS 3/4" TO 1 1/2")

UNLESS OTHERWISE SPECIFIED ALL DIMENSIONS INCLUDE FINISHES AND ARE IN INCHES				MATERIAL:		 <b>Sabre Industries™</b> Towers and Poles		10'-0" WAVEGUIDE LADDER 6 HOLE RUNG					
TOLERANCES: FRACTIONS ± 1/16" ANGLES ± 1/2 DEG. DECIMALS ± .010"				TOLERANCES DO NOT APPLY TO RAW MATERIAL									
<div>CONFIDENTIAL</div> <p>This document and the information contained herein is the confidential trade secret property of Sabre Communications Corporation ("Sabre") and must not be reproduced, copied or used, in whole or in part, for any purpose without the prior written consent of Sabre.</p> <p>© 2015 Sabre Communications Corporation. All rights reserved.</p>								SIZE		DRAWING NO.		REV	
								B		C20128030		1	
						DATE		1/26/15					
						DRAWN BY		CHH					
						CHECKED BY		HHC					