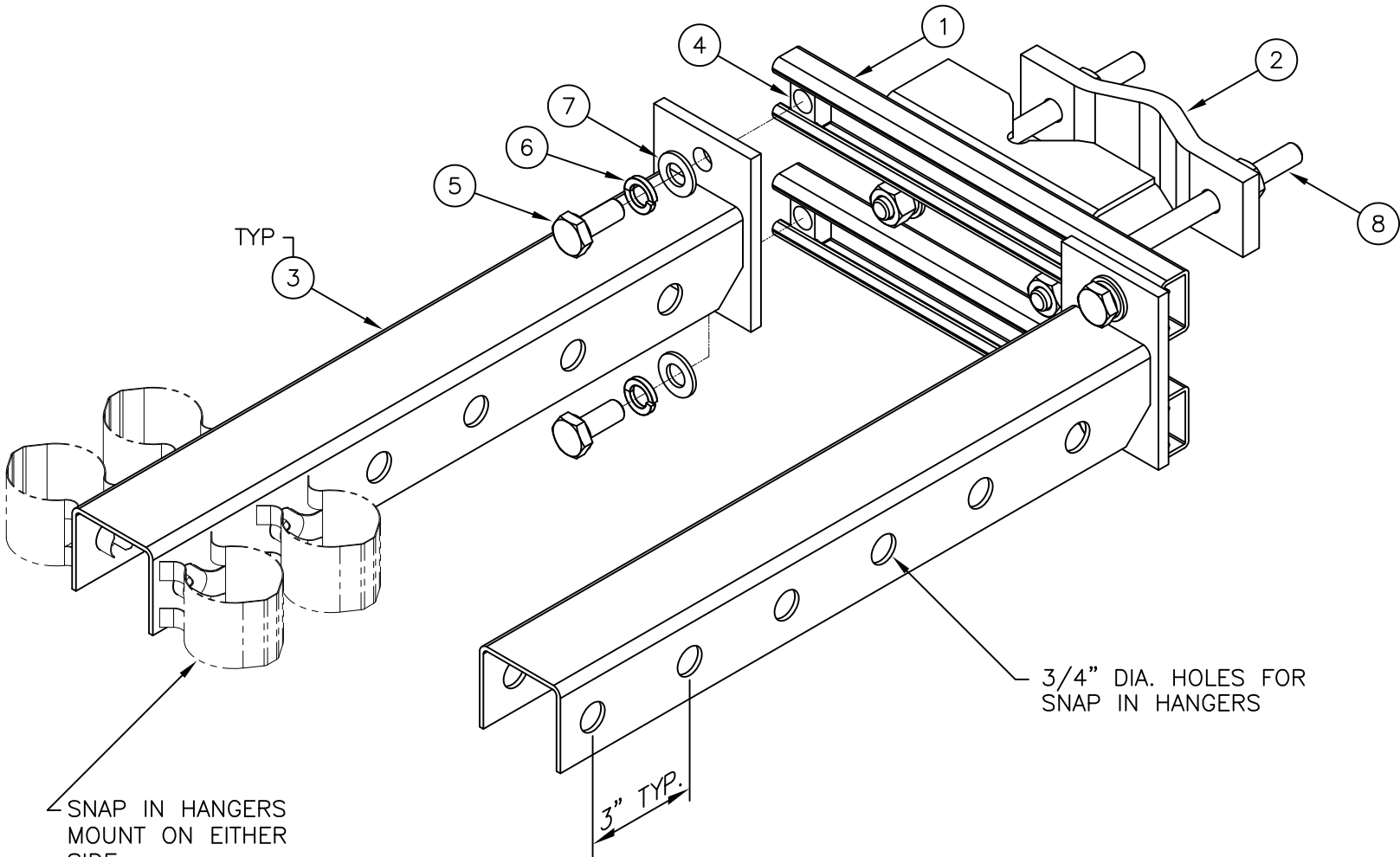


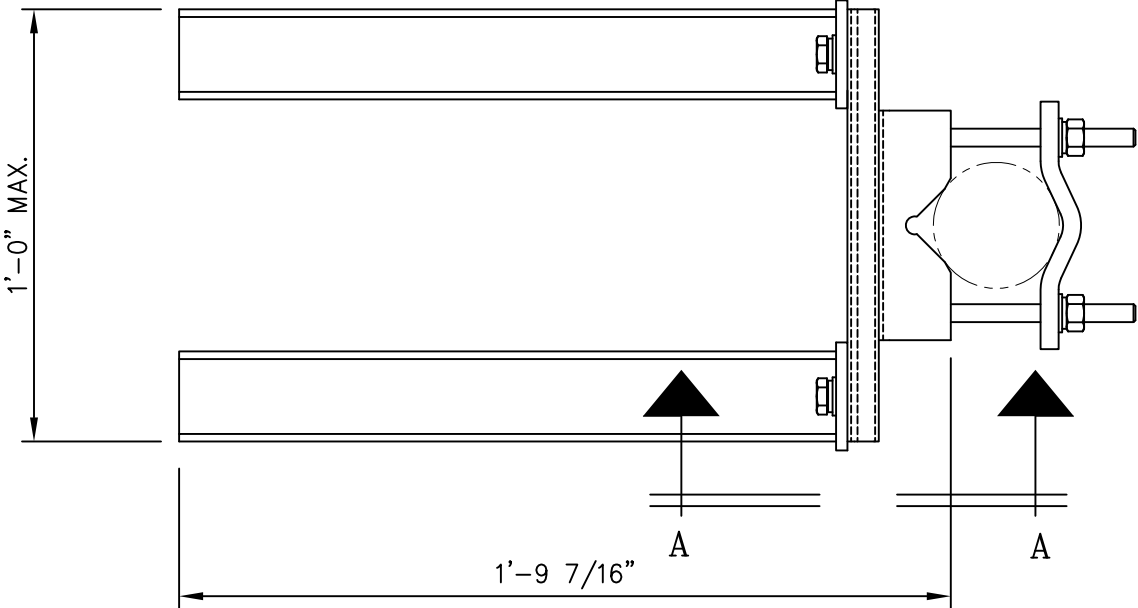


C20130005R ADJUSTABLE WAVEGUIDE MOUNT

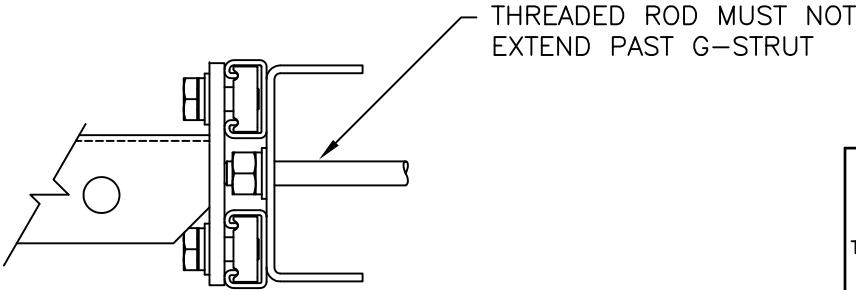
ITEM		QTY.	DESCRIPTION		
1.	1	CW01315	WELDMNT, WAVEGUIDE PIPE MOUNT	5	
2.	1	CS03286	SADDLE CLAMP	2	
3.	2	CW01316	WELDMNT, SUPPORT RUNG	11	
4.	4	C40998382	G-STRUT SPRING NUT GN-812 1/2"-13 OR EQUAL	1	
5.	4	C40112028	BOLT, 1/2 Ø X 1 1/4 S.S.	1	
6.	4	C40018003	1/2 Ø LOCK WASHER S.S.	1	
7.	4	C40020012	1/2 Ø FLAT WASHER S.S.	1	
8.	2	C40032025	THREADED ROD ASSEMBLY, 1/2 Ø X 0'-8"	2	
TOTAL WEIGHT				24	



ISOMETRIC VIEW




TOP VIEW



VIEW A-A

Distributed By
Rosenberger
Rosenberger Site Solutions, LLC
visit www.RosenbergerOnline.us

UNLESS OTHERWISE SPECIFIED ALL DIMENSIONS INCLUDE FINISHES AND ARE IN INCHES				MATERIAL:		MANUFACTURED BY		ADJUSTABLE WAVEGUIDE MOUNT ROSENBERGER SITE SOLUTIONS FITS 1 1/4" THROUGH 3 1/2" PIPES									
TOLERANCES: FRACTIONS ± 1/16" ANGLES ± 1/2 DEG. DECIMALS ± .010"				TOLERANCES DO NOT APPLY TO RAW MATERIAL													
						CONFIDENTIAL											
						This document and the information contained herein is the confidential trade secret property of Sabre Communications Corporation ("Sabre") and must not be reproduced, copied or used, in whole or in part, for any purpose without the prior written consent of Sabre. © 2015 Sabre Communications Corporation. All rights reserved.				SIZE		DRAWING NO.		REV			
								DATE		12/15/15		B		C20130005R		0	
								DRAWN BY		WRF				SCALE		PAGE	
								CHECKED BY		EK				None		1 OF 1	
REV	DATE	DRW	CHK			DESCRIPTION											