

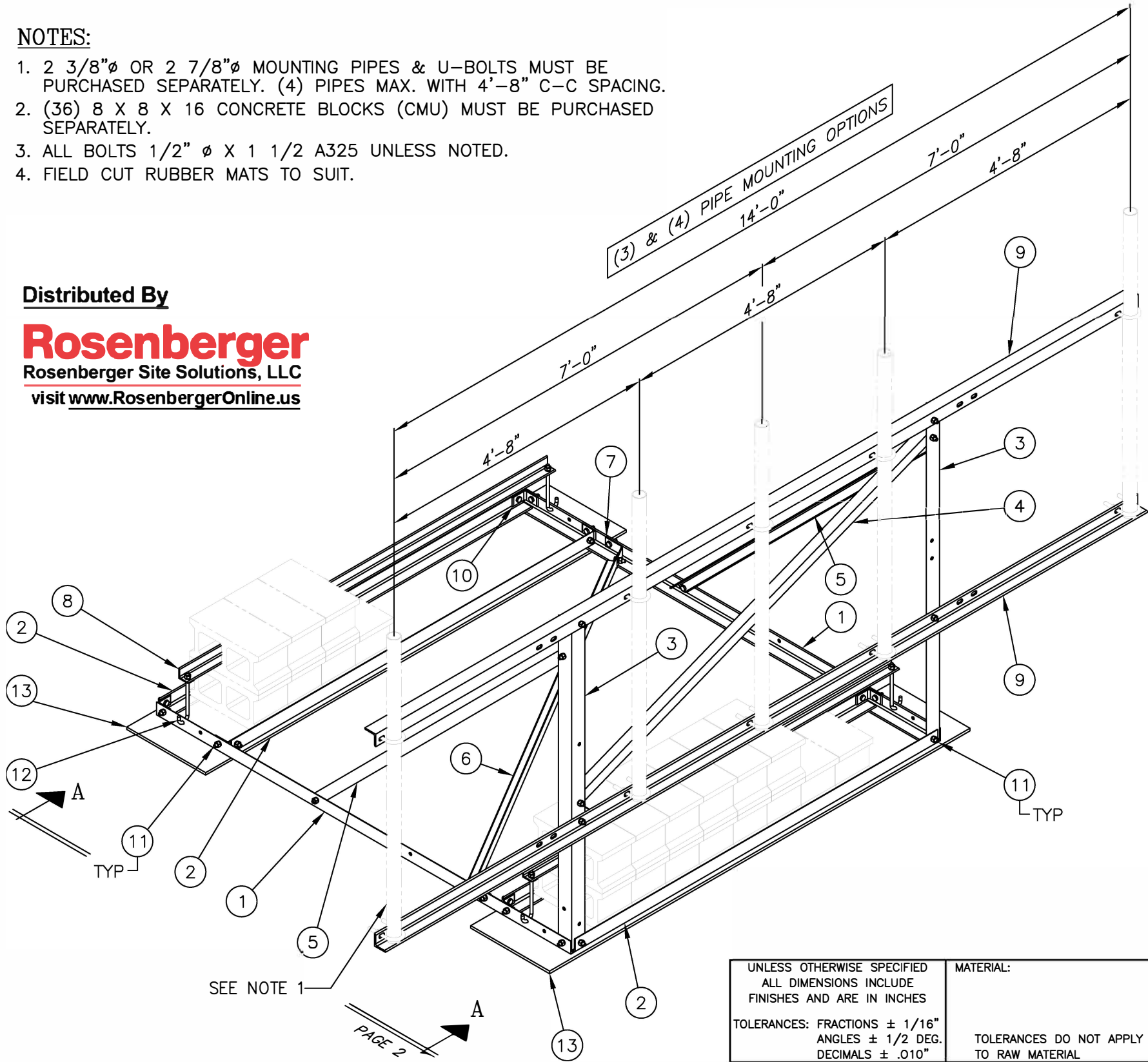


NOTES:

1. 2 3/8"Ø OR 2 7/8"Ø MOUNTING PIPES & U-BOLTS MUST BE PURCHASED SEPARATELY. (4) PIPES MAX. WITH 4'-8" C-C SPACING.
2. (36) 8 X 8 X 16 CONCRETE BLOCKS (CMU) MUST BE PURCHASED SEPARATELY.
3. ALL BOLTS 1/2" Ø X 1 1/2 A325 UNLESS NOTED.
4. FIELD CUT RUBBER MATS TO SUIT.

Distributed By

**Rosenberger**  
Rosenberger Site Solutions, LLC  
visit [www.RosenbergerOnline.us](http://www.RosenbergerOnline.us)



ISOMETRIC VIEW

C10223030 14 FT. FACE SECTOR ROOF MOUNT

(1)	CK00018	SECTOR ROOF MOUNT ANGLE KIT	291
(1)	CK00028	SECTOR ROOF MOUNT 14' FACE ANGLE KIT	124
(1)	CK00017	ROOF MOUNT ANGLE KIT	3
(1)	---	MISC. ITEMS AND HARDWARE LIST	87
TOTAL WEIGHT			505

CK00018 KIT LIST OF MATERIAL

ITEM	QTY.	PART. NO.	DESCRIPTION	WEIGHT
1.	2	CS00100	ANGLE, SIDE	50
2.	4	CS00101	ANGLE, BALLAST	88
3.	2	CS00102	ANGLE, FRONT	42
4.	1	CS00104	ANGLE, FRONT DIAGONAL	19
5.	2	CS00105	ANGLE, SIDE DIAGONAL	35
6.	1	CS00106	ANGLE, BOTTOM DIAGONAL	20
7.	2	CS00108	BENT PLATE	1
8.	2	CS00109	ANGLE, BALLAST TIE DOWN	36
TOTAL WEIGHT				291

CK00028 KIT LIST OF MATERIAL

ITEM	QTY.	PART. NO.	DESCRIPTION	WEIGHT
9.	2	CS00212	ANGLE, PIPE MOUNT	124
TOTAL WEIGHT				124

CK00017 KIT LIST OF MATERIAL

ITEM	QTY.	PART. NO.	DESCRIPTION	WEIGHT
10.	6	CS00107	ANGLE, CORNER	3
TOTAL WEIGHT				3

MISC. ITEMS AND HARDWARE

ITEM	QTY.	PART. NO.	DESCRIPTION	WEIGHT
11.	30	C40026003	BOLT ASSEMBLY, 1/2 X 1 1/2 A325	8
12.	4	C40039008	J-BOLT ASSEMBLY, 1/2 X 9	3
13.	4	C10226001	1/2" RUBBER MAT	76
TOTAL WEIGHT				87

UNLESS OTHERWISE SPECIFIED  
ALL DIMENSIONS INCLUDE  
FINISHES AND ARE IN INCHES  
  
TOLERANCES: FRACTIONS ± 1/16"  
ANGLES ± 1/2 DEG.  
DECIMALS ± .010"

MATERIAL:  
  
TOLERANCES DO NOT APPLY  
TO RAW MATERIAL

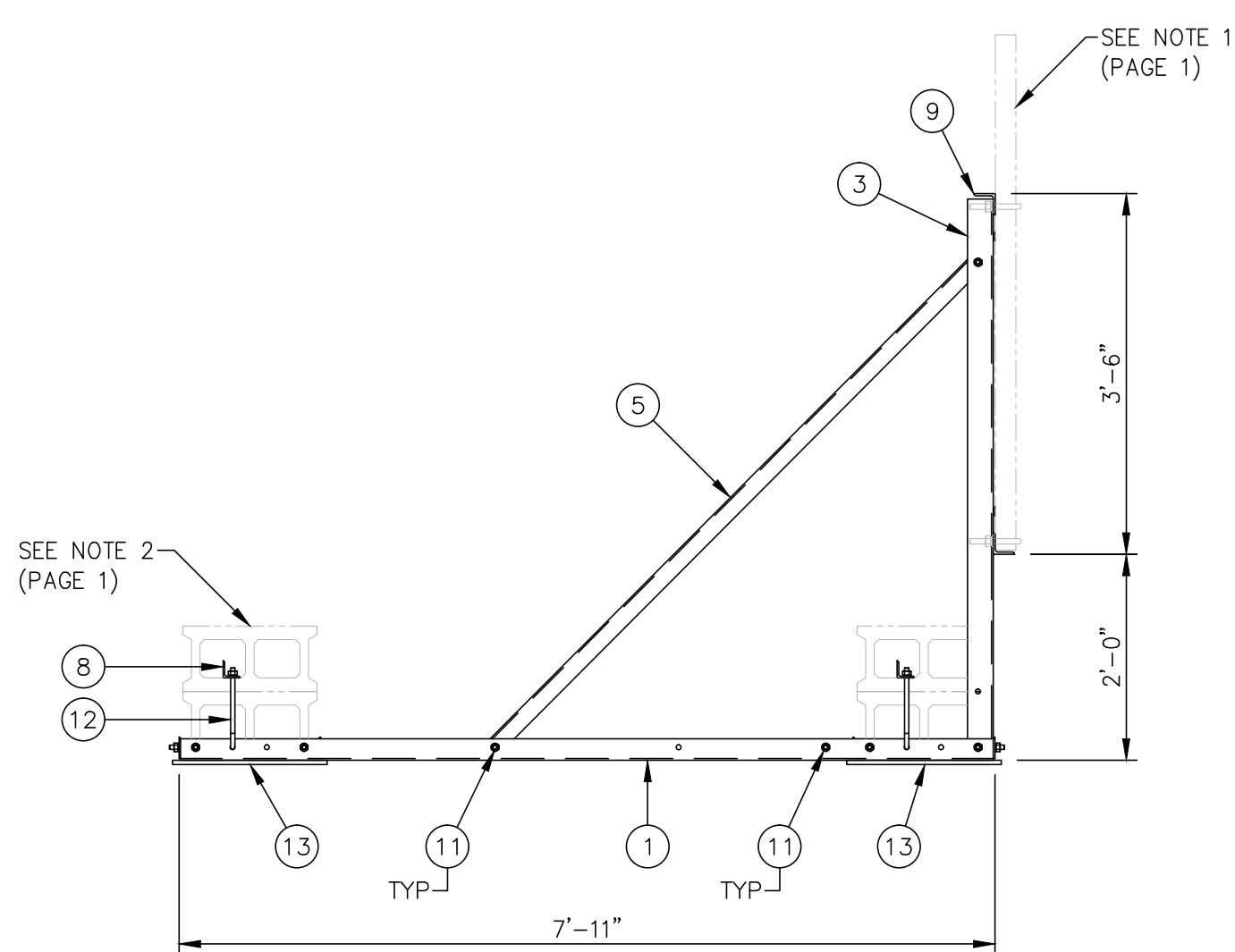


REV	DATE	DRW/CHK	DESCRIPTION
1	07/25/06	WMN/WRF	ADDED ISOMETRIC VIEW

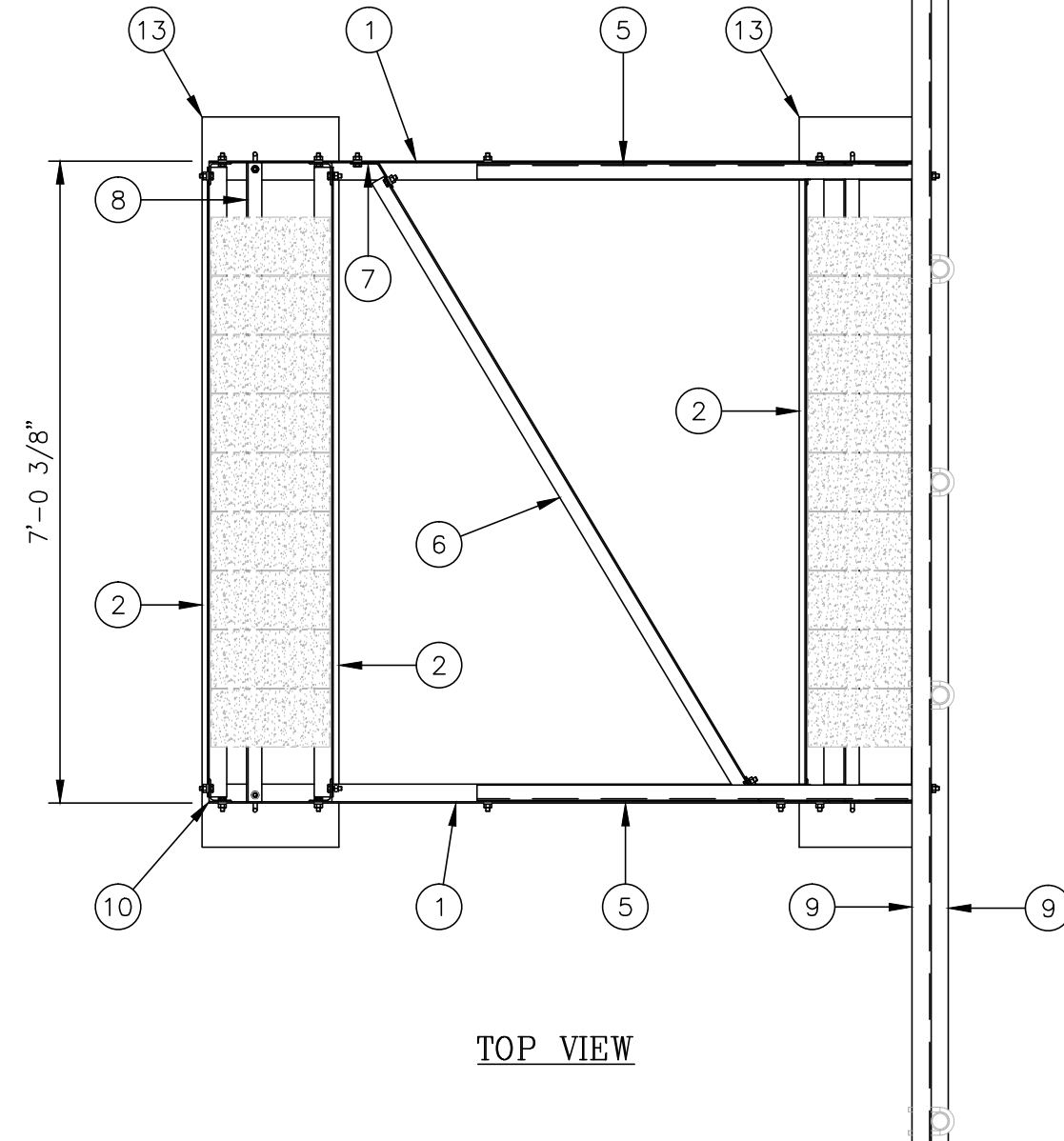
**CONFIDENTIAL**  
This document and the information contained herein is the confidential trade secret property of Sabre Communications Corporation ("Sabre") and must not be reproduced, copied or used, in whole or in part, for any purpose without the prior written consent of Sabre.  
© 2006 Sabre Communications Corporation. All rights reserved.

14 FT. FACE SECTOR ROOF MOUNT  
(NON-PENETRATING)  
NO ANTENNA MOUNTING PIPES

		SIZE	DRAWING NO.		REV
DATE	03/27/03	B	C10223030		1
DRAWN BY	KLE			SCALE	PAGE
CHECKED BY	CE			None	1 OF 2



VIEW A-A



TOP VIEW

UNLESS OTHERWISE SPECIFIED  
ALL DIMENSIONS INCLUDE  
FINISHES AND ARE IN INCHES  
TOLERANCES: FRACTIONS  $\pm 1/16"$   
ANGLES  $\pm 1/2$  DEG.  
DECIMALS  $\pm .010"$

MATERIAL:  
  
TOLERANCES DO NOT APPLY  
TO RAW MATERIAL



**CONFIDENTIAL**  
This document and the information  
contained herein is the confidential trade  
secret property of Sabre Communications  
Corporation ("Sabre") and must not be  
reproduced, copied or used, in whole or in  
part, for any purpose without the prior  
written consent of Sabre.  
© 2006 Sabre Communications Corporation.  
All rights reserved.

14 FT. FACE SECTOR ROOF MOUNT  
(NON-PENETRATING)  
NO ANTENNA MOUNTING PIPES

REV	DATE	DRW	CHK	DESCRIPTION
1	07/25/06	WMN	WRF	ADDED ISOMETRIC VIEW

		SIZE	DRAWING NO.		REV
DATE	03/27/03	B	C10223030		1
DRAWN BY	KLE			SCALE	PAGE
CHECKED BY	CE			None	2 OF 2