



Distributed By

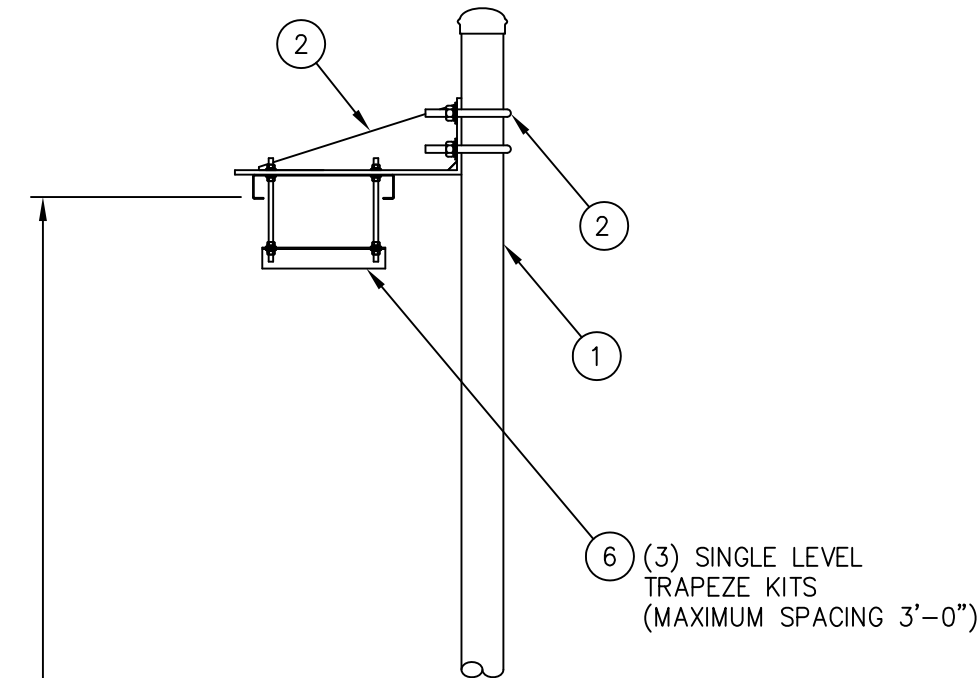
Rosenberger

Rosenberger Site Solutions, LLC

visit www.RosenbergerOnline.us

C20136063 GRIP STRUT WAVEGUIDE BRIDGE KIT

ITEM	QTY.	PART. NO.	DESCRIPTION	WEIGHT
1.	2	C20139005	WAVEGUIDE BRIDGE POST W/PIPE CAP & ANCHORS	233.8#
2.	2	C20140010	WAVEGUIDE BRIDGE SUPPORT ARM W/U-BOLTS	20.8#
3.	1	C20137001	GRIP STRUT WAVEGUIDE BRIDGE, 11 3/4" X 10'-0	44.0#
4.	4	C40012017	STAINLESS STEEL BOLT ASSY, 3/8 X 2	0.4#
5.	8	C40046001	FENDER WASHER, 7/16 I.D. X 1 1/2 O.D.	0.4#
6.	3	C20145001	SINGLE LEVEL TRAPEZE KIT	9.0#
TOTAL WEIGHT				308.4#

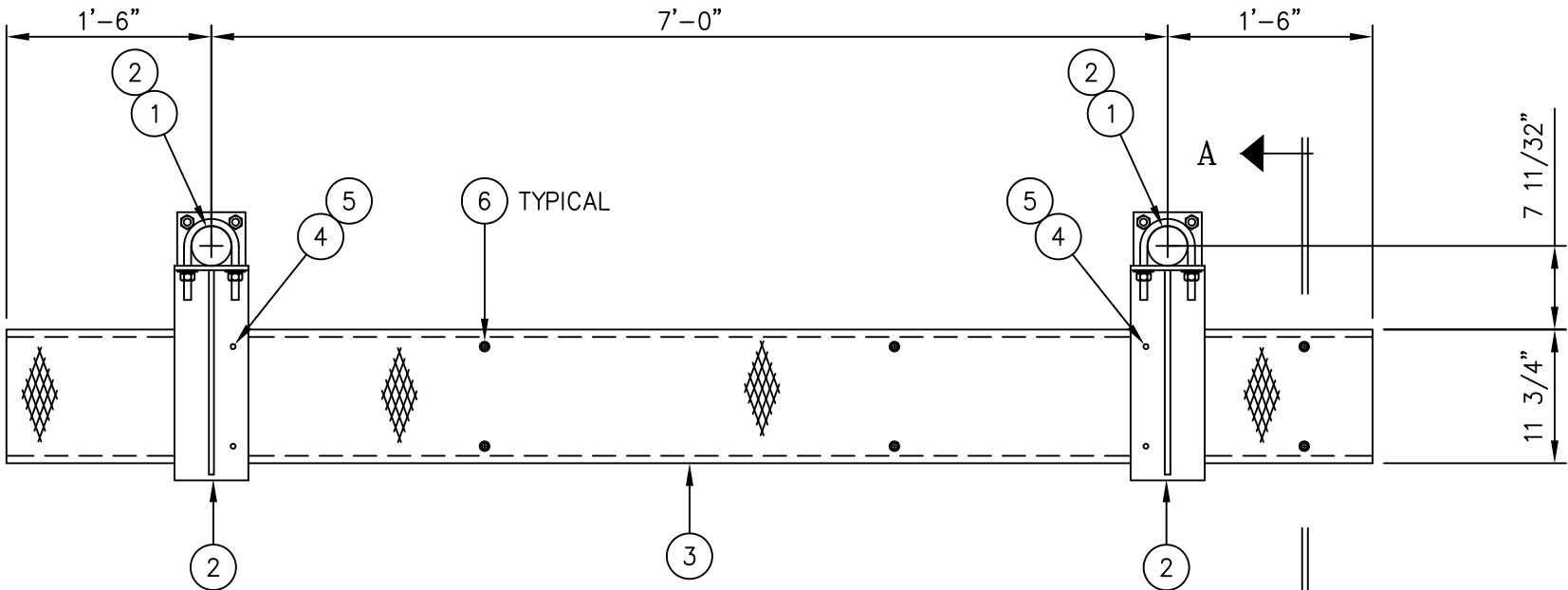


13'-0" (MAX.)

(3) SINGLE LEVEL TRAPEZE KITS (MAXIMUM SPACING 3'-0")

1/2"Ø EXPANSION ANCHORS ARE SUPPLIED WITH KIT C20139005

SECTION A-A



PLAN VEIW

NOTE:

THIS WAVEGUIDE BRIDGE ASSEMBLY IS NOT DESIGNED TO SUPPORT PERSONNEL OR EQUIPMENT.

UNLESS OTHERWISE SPECIFIED
ALL DIMENSIONS INCLUDE
FINISHES AND ARE IN INCHES

TOLERANCES: FRACTIONS ± 1/16"
ANGLES ± 1/2 DEG.
DECIMALS ± .010"

MATERIAL:

TOLERANCES DO NOT APPLY
TO RAW MATERIAL



CONFIDENTIAL

This document and the information contained herein is the confidential trade secret property of Sabre Communications Corporation ("Sabre") and must not be reproduced, copied or used, in whole or in part, for any purpose without the prior written consent of Sabre.
© 2006 Sabre Communications Corporation.
All rights reserved.

GRIP STRUT WAVEGUIDE BRIDGE
WITH 14'-0" BASE PLATE COLUMNS
(11 3/4" WIDE X 10'-0")
SINGLE LEVEL TRAPEZE

REV	DATE	DRW	CHK	DESCRIPTION

		SIZE	DRAWING NO.		REV
DATE	6/6/03	B	C20136063		0
DRAWN BY	KLE			SCALE	PAGE
CHECKED BY	PSB			None	1 OF 1