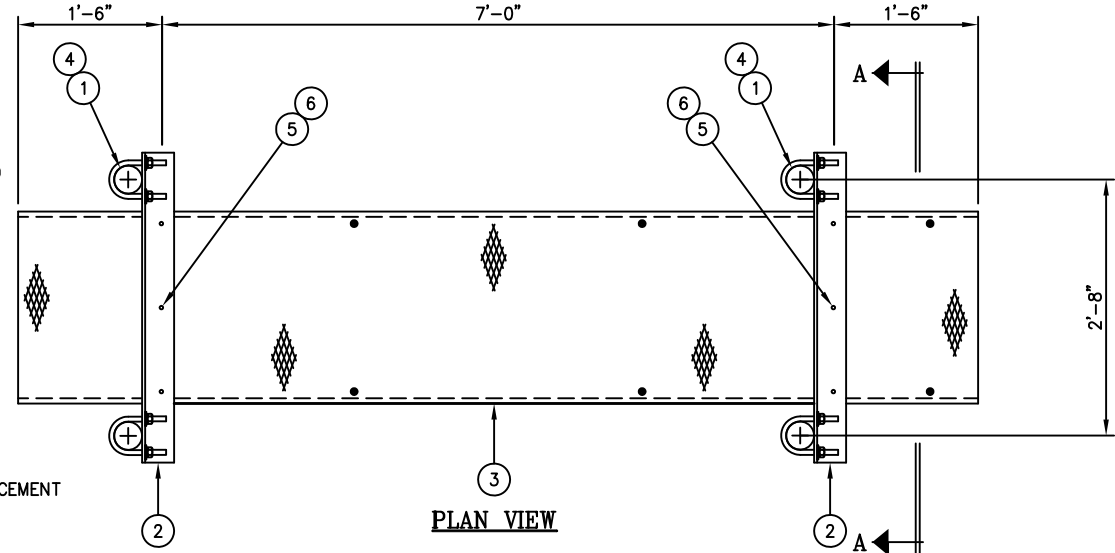


SECTION A-A


**Distributed By**  
**Rosenberger**  
 Rosenberger Site Solutions, LLC  
 Call 1.866.598.5250 or visit [www.RLSS.us](http://www.RLSS.us)

C20135053 GRIP STRUT WAVEGUIDE BRIDGE KIT				
ITEM	QTY.	PART. NO.	DESCRIPTION	WEIGHT
1.	4	C20138004	PIPE, WAVEGUIDE BRIDGE POST W/PIPE CAP	394.0#
2.	2	CS00053	WAVEGUIDE BRIDGE SUPPORT ANGLE	82.6#
3.	1	C20137002	GRIP STRUT WAVEGUIDE BRIDGE, 24" X 10'-0	74.0#
4.	8	C40034028	U-BOLT ASSEMBLY, 5/8"Ø X 4 3/16" C/C	15.4#
5.	6	C40012017	STAINLESS STEEL BOLT ASSY, 3/8 X 2	0.6#
6.	12	C40046001	FENDER WASHER, 7/16 I.D. X 1 1/2 O.D.	0.6#
TOTAL WEIGHT				567.2#



**NOTE:**

THIS WAVEGUIDE BRIDGE ASSEMBLY IS NOT DESIGNED TO SUPPORT PERSONNEL OR EQUIPMENT.

UNLESS OTHERWISE SPECIFIED ALL DIMENSIONS INCLUDE FINISHES AND ARE IN INCHES				MATERIAL:			GRIP STRUT WAVEGUIDE BRIDGE WITH 15'-4" PIPE COLUMNS (24" WIDE X 10'-0") NO TRAPEZE						
TOLERANCES: FRACTIONS ± 1/16" ANGLES ± 1/2 DEG. DECIMALS ± .010"				TOLERANCES DO NOT APPLY TO RAW MATERIAL									
						<b>CONFIDENTIAL</b>							
						This document and the information contained herein is the confidential trade secret property of Sabre Communications Corporation ("Sabre") and must not be reproduced, copied or used, in whole or in part, for any purpose without the prior written consent of Sabre.							
						© 2006 Sabre Communications Corporation. All rights reserved.							
								SIZE		DRAWING NO.		REV	
								B		C20135053		1	
						DATE		6/3/03					
						DRAWN BY		KLE					
						CHECKED BY		PSB		SCALE		PAGE	
										None		1 OF 1	