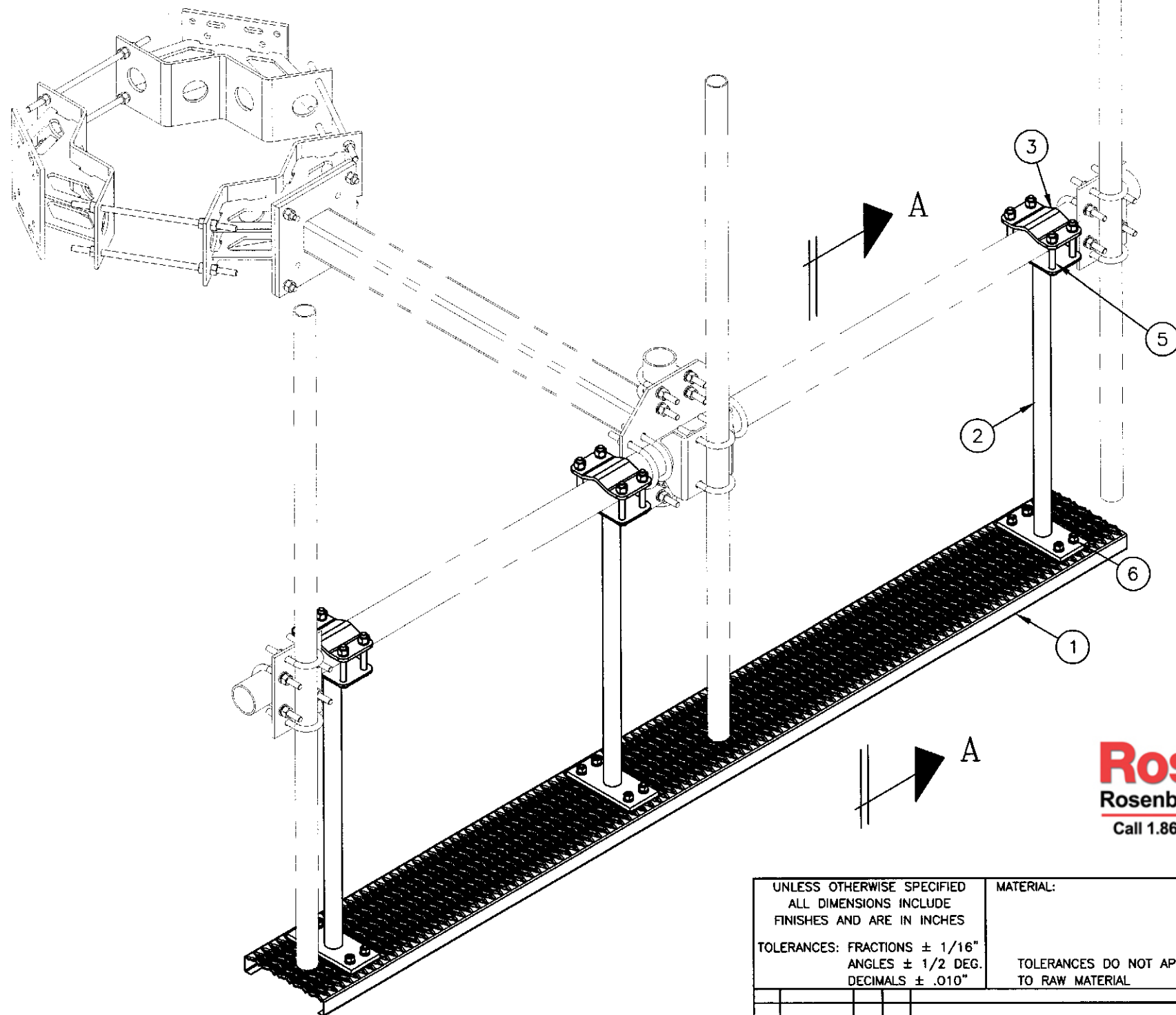


NOTES:

1. QUANTITIES SHOWN IN LIST OF MATERIAL ARE FOR ONE (1) T-ARM WORK PLATFORM ONLY.
2. TRI-COLLAR MOUNTS ARE SHOWN TYPICAL AND MUST BE PURCHASED SEPARATELY.
3. T-ARM MOUNTS MUST BE PURCHASED SEPARATELY.



ISOMETRIC VIEW

C10181301 (1) T-ARM WORK PLATFORM ASSEMBLY

(1)	GRATING	44#
(3)	CK00083 HARDWARE KIT	93#
TOTAL WEIGHT		137#

LIST OF MATERIAL

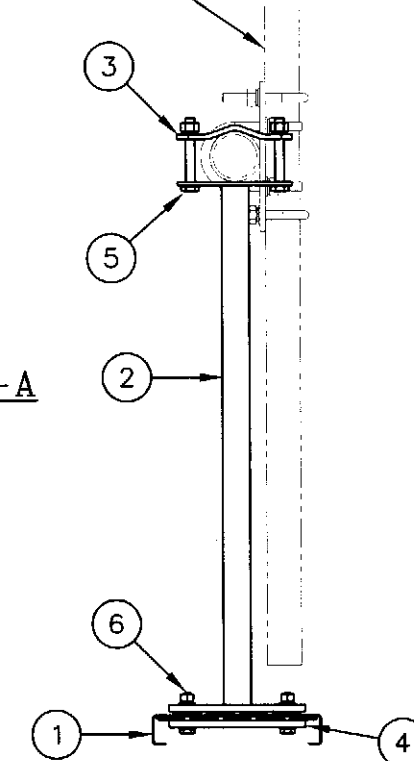
ITEM	QTY.	PART NO.	DESCRIPTION	WEIGHT
1.	1	C20137001	GRIP STRUT GRATING (11 3/4" X 10'-0")	44#
TOTAL WEIGHT				44#

CK00083 KIT LIST OF MATERIAL

ITEM	QTY.	PART NO.	DESCRIPTION	WEIGHT
2.	1	CW00680	WELDMENT, T-ARM WORK PLATFORM SUPPORT	17#
3.	1	CS02081	PLATE, 4 HOLE ADAPTER	4#
4.	1	CS00946	PLATE, BACKUP	5#
5.	4	C40026033	BOLT ASSEMBLY, 5/8 X 4 1/2 A325	3#
6.	4	C40026008	BOLT ASSEMBLY, 1/2 X 2 3/4 A325	2#
TOTAL WEIGHT				31#

ANTENNA MOUNTING PIPE

VIEW A-A



Distributed By
Rosenberger
Rosenberger Site Solutions, LLC
Call 1.866.598.5250 or visit www.RLSS.us

UNLESS OTHERWISE SPECIFIED ALL DIMENSIONS INCLUDE FINISHES AND ARE IN INCHES			MATERIAL:		
TOLERANCES: FRACTIONS $\pm 1/16"$ ANGLES $\pm 1/2$ DEG. DECIMALS $\pm .010"$			TOLERANCES DO NOT APPLY TO RAW MATERIAL		
REV	DATE	DRW/CHK	DESCRIPTION		



CONFIDENTIAL
This document and the information contained herein is the confidential trade secret property of Sabre Communications Corporation ("Sabre") and must not be reproduced, copied or used, in whole or in part, for any purpose without the prior written consent of Sabre.
© 2009 Sabre Communications Corporation. All rights reserved.

T-ARM WORK PLATFORM ASSEMBLY (FITS 3 1/2" ROUND TUBE)

		SIZE	DRAWING NO.		REV
DATE	6/23/09	B	C10181301		0
DRAWN BY	MLC		SCALE None	PAGE	
CHECKED BY	MC ✓			1 OF 1	