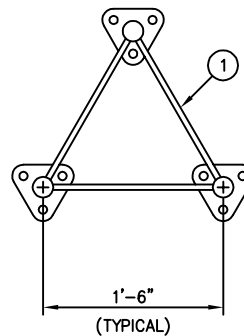


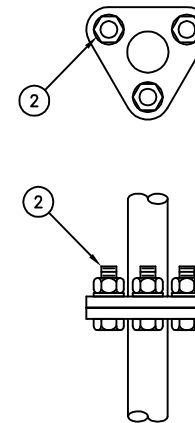
**ELEVATION VIEW**

**NOTES:**

1. THE PART NUMBER OF THE TOWER SECTION IS LOCATED AT THE TOP OF EACH SECTION.
2. IT IS IMPORTANT TO ALIGN THESE PART NUMBERS ON THE SAME LEG FOR THE ENTIRE HEIGHT OF THE TOWER.



**PLAN VIEW**



**SPLICE DETAIL**

**C30904801 10 FT. TOWER SECTION (MODEL 1800 SRWD)**

ITEM	QTY.	PART NO.	DESCRIPTION	WEIGHT
1.	1	T1800002	10 FT. TOWER SECTION (MODEL 1800 SRWD)	197.2#
2.	9	C40026005	BOLT ASSEMBLY, 1/2 X 2 A325	2.2#
TOTAL WEIGHT				199.4#

UNLESS OTHERWISE SPECIFIED ALL DIMENSIONS INCLUDE FINISHES AND ARE IN INCHES			MATERIAL:		
TOLERANCES: FRACTIONS $\pm 1/16"$ ANGLES $\pm 1/2$ DEG. DECIMALS $\pm .010"$			TOLERANCES DO NOT APPLY TO RAW MATERIAL		
REV	DATE	DRW/CHK	DESCRIPTION		
1	03/30/07	PSB/BSP	ADDED NOTES.		



**CONFIDENTIAL**  
This document and the information contained herein is the confidential trade secret property of Sabre Communications Corporation ("Sabre") and must not be reproduced, copied or used, in whole or in part, for any purpose without the prior written consent of Sabre.  
© 2006 Sabre Communications Corporation. All rights reserved.

**10 FT. TOWER SECTION  
(1 1/4"  $\phi$  LEG - 1/2"  $\phi$  BRACING)  
MODEL 1800 SRWD**

		SIZE B	DRAWING NO. C30904801		REV 1
DATE	3/3/04				
DRAWN BY	KLE		SCALE None	PAGE 1 OF 1	
CHECKED BY	DLW				