

ISOMETRIC VIEW
SEE PAGES 2 & 3 FOR ADDITIONAL DETAILS

C10855667C 12' HD PLATFORM W/COLLARS, CROSSOVERS & ENHANCED SUPPORT RAIL

ITEM	QTY.	PART NO.	DESCRIPTION	WEIGHT
1.	2	C10112377	TRI-COLLAR BRACKET ASSEMBLY (10"-40" MONOPOLE)	416
2.	3	CW01320	WELDMENT, PLATFORM CORNER	612
3.	3	CS03348	SQUARE TUBE, 3 X 3 X 3/16 X 12'-6	268
4.	3	CS03354	PLATE, UPPER CONNECTION	22
5.	3	CW01322	WELDMENT, KICKER SUPPORT	31
6.	3	CW01291	WELDMENT, KICKER SUPPORT	32
7.	6	CS03372	ANGLE, KICKER	82
8.	3	CW01321	WELDMENT, POST 3 1/2" O.D. X 3'-4	107
9.	3	CS03349	PLATE, CONNECTION 3/8 X 4 3/8 X 3'-6 1/16	56
10.	3	CS02229	PIPE, 1.9 O.D. X .145 X 12'-6	106
11.	12	CS03351	CROSSOVER PLATE	58
12.	12	CS03336	CROSSOVER PLATE	48
13.	18	C40026024	BOLT ASSEMBLY, 5/8 Ø X 2 1/4 A325	9
14.	36	C40026023	BOLT ASSEMBLY, 5/8 Ø X 2 A325	17
15.	12	C40024106	BOLT ASSEMBLY, 1/2 Ø X 6 1/2 GR5 FULL THD	5
16.	12	C40031003	FLATWASHER, 5/8 Ø HARDENED ASTM F436	1
17.	24	C40031002	FLATWASHER, 1/2 Ø HARDENED ASTM F436	1
18.	12	C40035017	SQ. U-BOLT ASSEMBLY, 5/8 Ø X 4 1/4 C-C	25
19.	36	C40034060	U-BOLT ASSEMBLY, 1/2 Ø X 2 9/16 C-C	26
20.	24	C40035106	SQ. U-BOLT ASSEMBLY, 1/2 Ø X 3 5/8 C-C	23
21.	48	C40034140	U-BOLT ASSEMBLY, 1/2 Ø X 3 7/16 C-C	43
22.	1	Z30992016	MOUNT CLASSIFICATION TAG C10855665C	1
23.	2	C40062104	STAINLESS STEEL SELF-LOCKING CABLE TIE	1
TOTAL WEIGHT				1990

2 7/8"Ø MOUNTING PIPES
MUST BE PURCHASED SEPARATELY

UNLESS OTHERWISE SPECIFIED
ALL DIMENSIONS INCLUDE
FINISHES AND ARE IN INCHES

TOLERANCES: FRACTIONS ± 1/16"
ANGLES ± 1/2 DEG.
DECIMALS ± .010"

MATERIAL:

TOLERANCES DO NOT APPLY
TO RAW MATERIAL

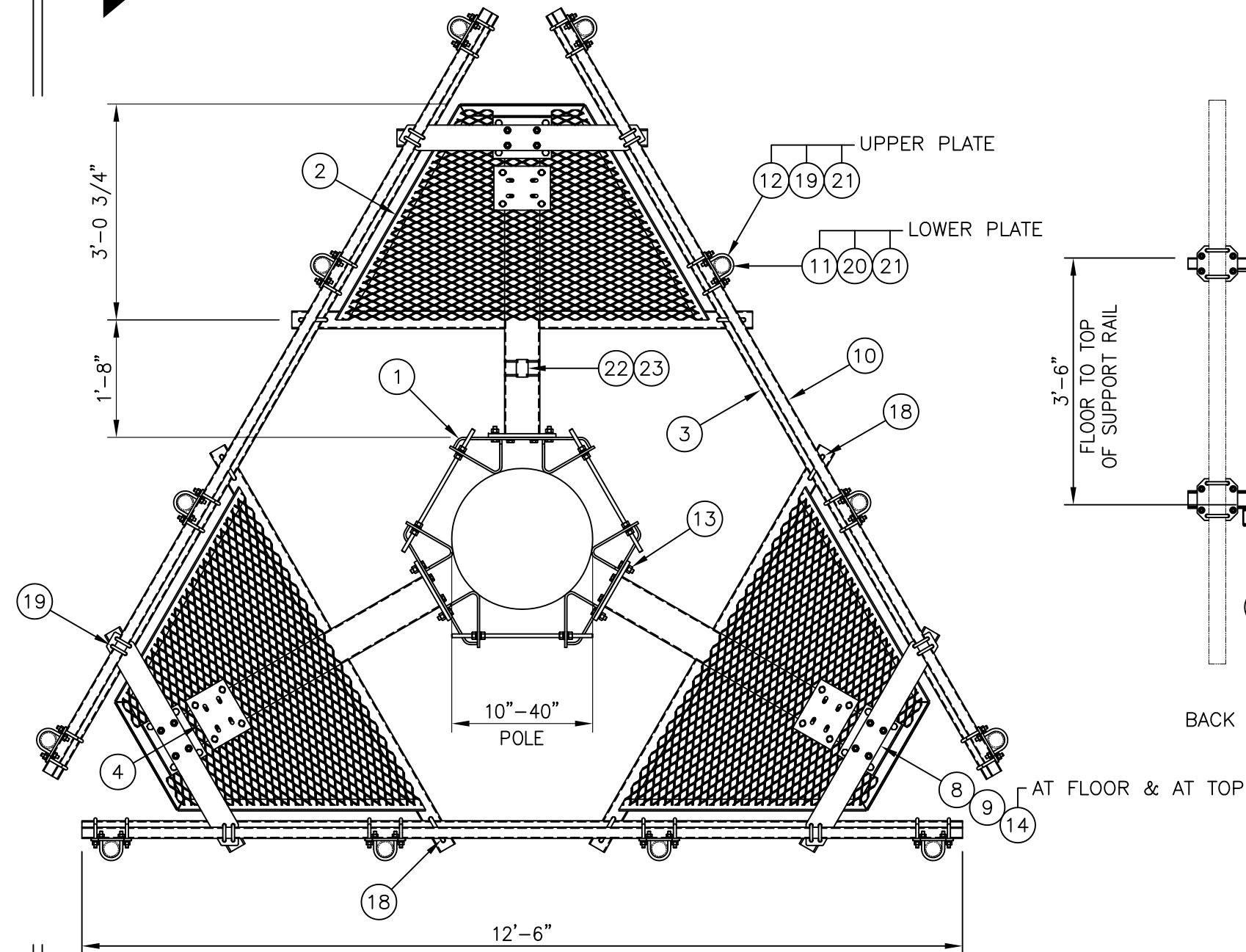
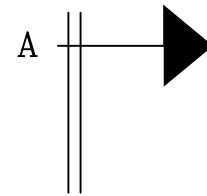


CONFIDENTIAL
This document and the information
contained herein is the confidential trade
secret property of Sabre Communications
Corporation ("Sabre") and must not be
reproduced, copied or used, in whole or in
part, for any purpose without the prior
written consent of Sabre.
© 2016 Sabre Communications Corporation.
All rights reserved.

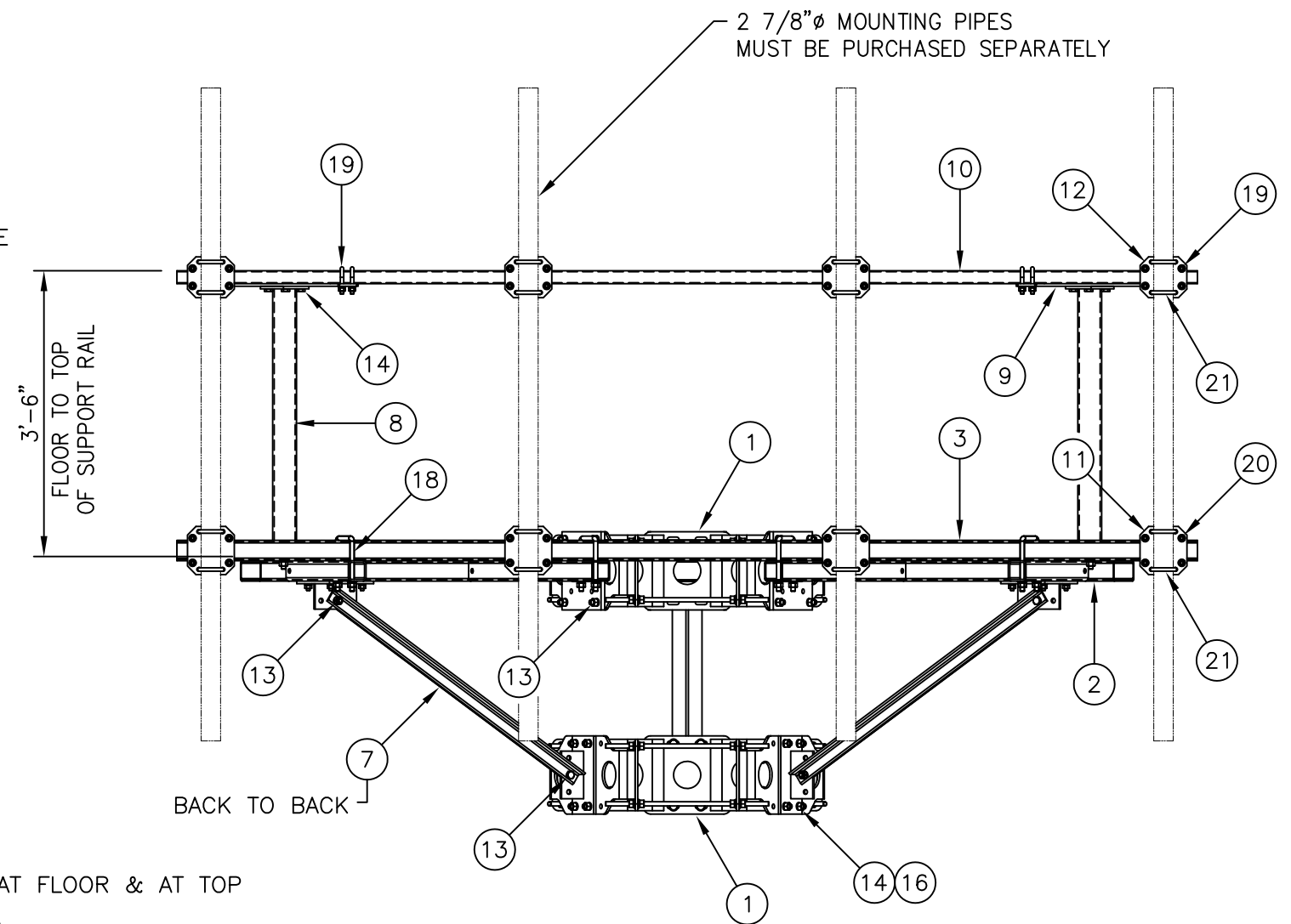
12' HD PLATFORM WITH COLLARS
& ENHANCED SUPPORT RAIL
1.9"Ø - 2 7/8"Ø CROSSOVERS
2 7/8"Ø - 3" SQUARE CROSSOVERS
FITS 10"Ø TO 40"Ø MONOPOLES

1	04/18/16	WRF	KLE	DESIGN UPDATE	
REV	DATE	DRW	CHK	DESCRIPTION	


		SIZE	DRAWING NO.		REV
DATE		B	C10855667C		1
DRAWN BY		WRF			
CHECKED BY		KLE	SCALE	PAGE	
			None	1 OF 3	



PLAN VIEW



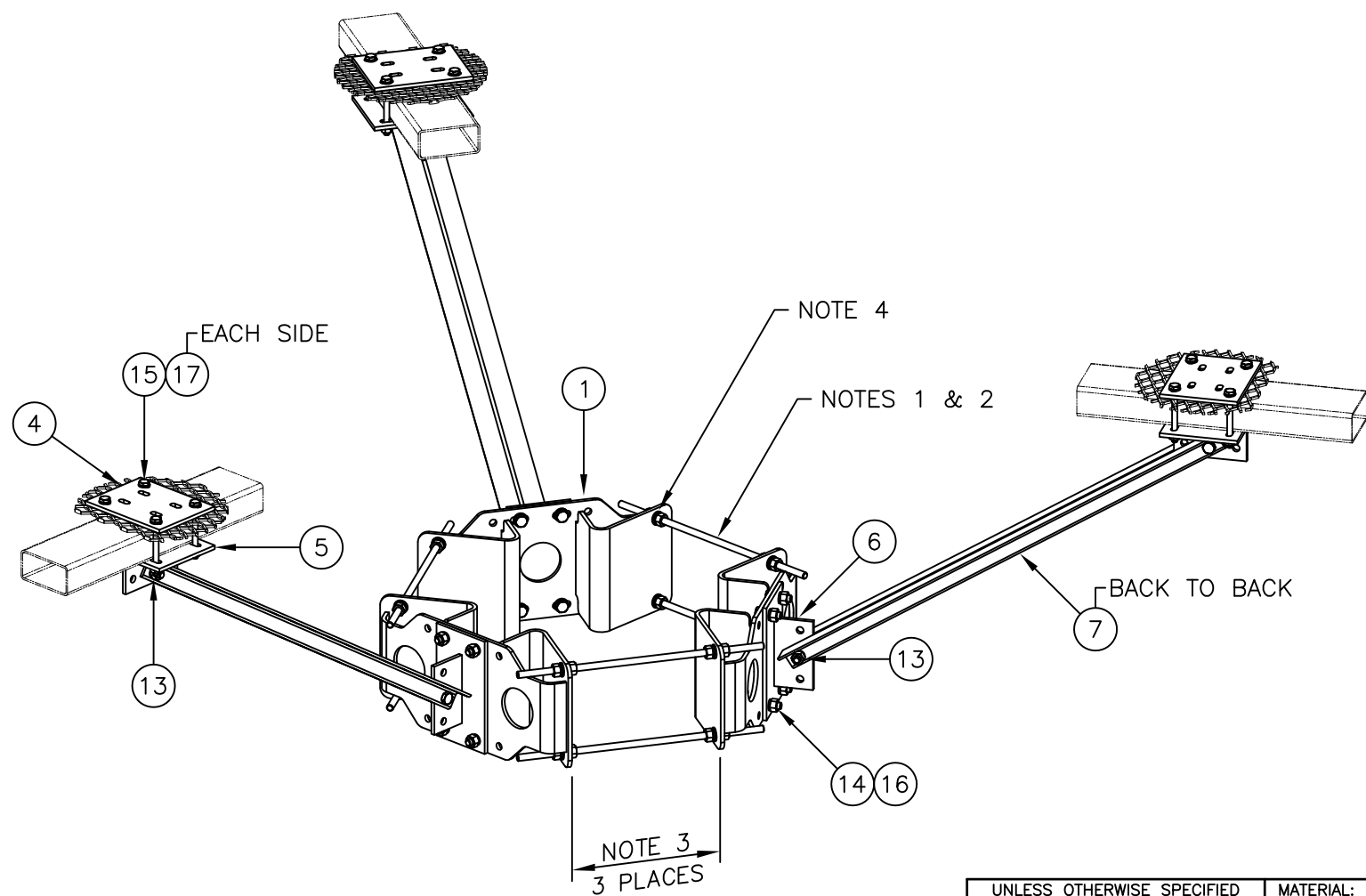
FRONT VIEW

UNLESS OTHERWISE SPECIFIED ALL DIMENSIONS INCLUDE FINISHES AND ARE IN INCHES				MATERIAL:			12' HD PLATFORM WITH COLLARS & ENHANCED SUPPORT RAIL 1.9"Ø – 2 7/8"Ø CROSSOVERS 2 7/8"Ø – 3" SQUARE CROSSOVERS FITS 10"Ø TO 40"Ø MONOPOLES					
TOLERANCES: FRACTIONS ± 1/16" ANGLES ± 1/2 DEG. DECIMALS ± .010"				TOLERANCES DO NOT APPLY TO RAW MATERIAL								
						CONFIDENTIAL This document and the information contained herein is the confidential trade secret property of Sabre Communications Corporation ("Sabre") and must not be reproduced, copied or used, in whole or in part, for any purpose without the prior written consent of Sabre. © 2016 Sabre Communications Corporation. All rights reserved.			SIZE	DRAWING NO.		REV
							DATE	02/16/16	B	C10855667C		1
							DRAWN BY		WRF			
							CHECKED BY		KLE			
										SCALE	PAGE	
										None	2 OF 3	
1	04/18/16	WRF	KLE	DESIGN UPDATE								
REV	DATE	DRW	CHK	DESCRIPTION								

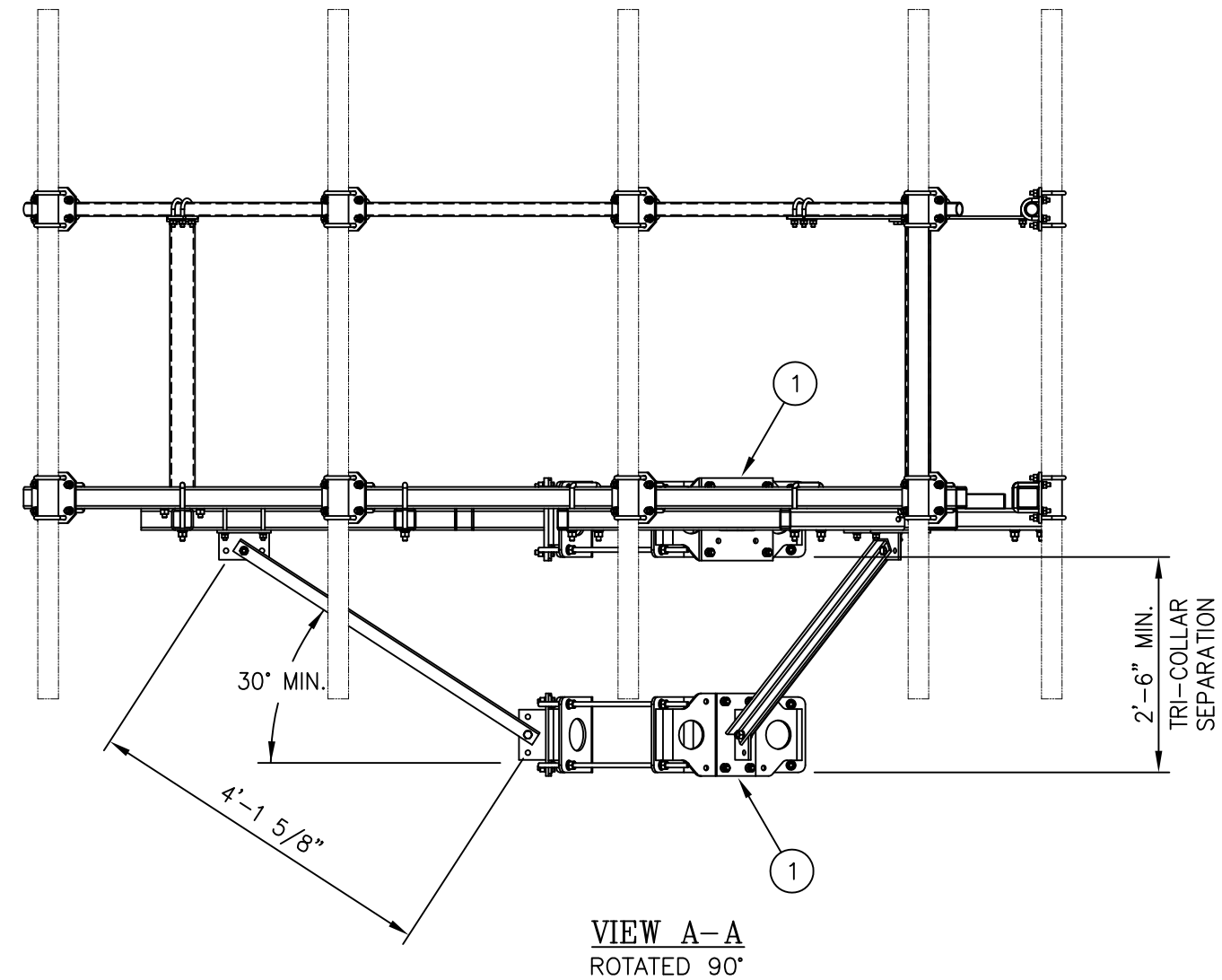



TRI-COLLAR NOTES:

- 1. THERE ARE (2) LENGTHS OF THREADED ROD SUPPLIED TO ACCOMMODATE DIAMETERS LISTED BELOW.
USE 5/8 X 1'-6" THREADED ROD ASSEMBLY FOR 10"-24" MONOPOLE DIAMETERS.
USE 5/8 X 2'-9" THREADED ROD ASSEMBLY FOR 24"-40" MONOPOLE DIAMETERS (SEE NOTE 2).
- 2. THREADED ROD MAY BE SHORTENED IF REQUIRED, FIELD CUT AND COLD GALV SPRAY TO SUIT.
- 3. THIS DISTANCE MUST BE EQUAL IN ALL (3) THREE LOCATIONS TO ENSURE THE STRUCTURAL INTEGRITY OF THE THREADED RODS AS WELL AS 120° SEPARATION.
- 4. FOR MONOPOLES 13" DIA. OR SMALLER, ONLY (1) ONE NUT AND (1) ONE LOCKWASHER ARE REQUIRED BETWEEN THE TRI-COLLAR BRACKETS.
FOR MONOPOLES LARGER THAN 13" DIA., (2) TWO NUTS AND (2) TWO LOCKWASHERS ARE REQUIRED BETWEEN THE TRI-COLLAR BRACKETS.



TRI-COLLAR & PLATFORM REINFORCEMENT DETAIL



UNLESS OTHERWISE SPECIFIED ALL DIMENSIONS INCLUDE FINISHES AND ARE IN INCHES					MATERIAL:							12' HD PLATFORM WITH COLLARS & ENHANCED SUPPORT RAIL 1.9"Ø – 2 7/8"Ø CROSSOVERS 2 7/8"Ø – 3" SQUARE CROSSOVERS FITS 10"Ø TO 40"Ø MONOPOLES				
TOLERANCES: FRACTIONS ± 1/16" ANGLES ± 1/2 DEG. DECIMALS ± .010"					TOLERANCES DO NOT APPLY TO RAW MATERIAL											
					<div>CONFIDENTIAL</div> <div>This document and the information contained herein is the confidential trade secret property of Sabre Communications Corporation ("Sabre") and must not be reproduced, copied or used, in whole or in part, for any purpose without the prior written consent of Sabre.</div> <div>© 2016 Sabre Communications Corporation. All rights reserved.</div>											
1	04/18/16	WRF	KLE	DESIGN UPDATE												
REV	DATE	DRW	CHK	DESCRIPTION												