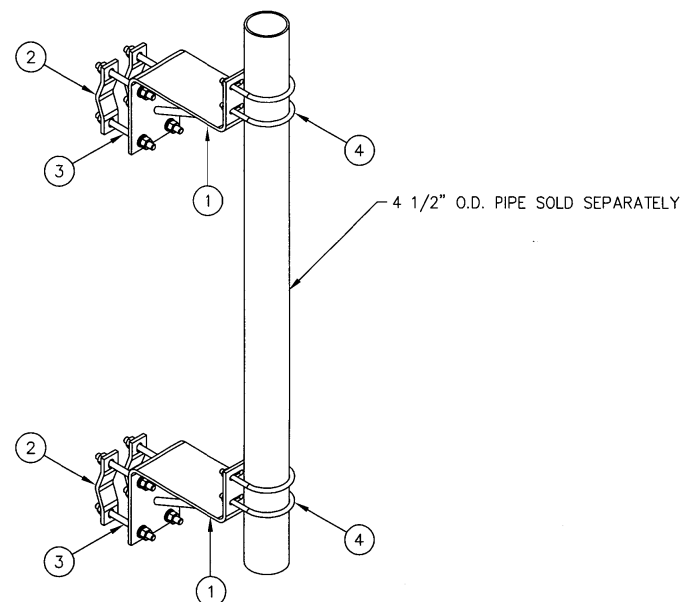
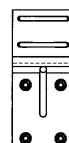
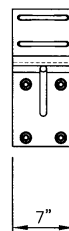
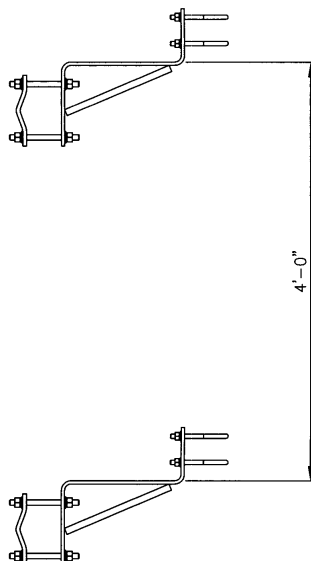
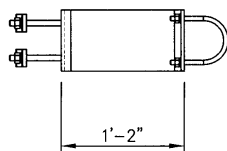




C10153434 (FMSOB-14) TOWER FACE MOUNT STANDOFF BRACKET

ITEM	QTY.	PART NO.	DESCRIPTION	WEIGHT
1.	2	CW01259	TOWER FACE STANDOFF BRACKET	46
2.	4	CS03203	SMALL CLAMP HALF	8
3.	8	C40032023	THREADED ROD ASSEMBLY, 5/8 ϕ X 0'-8	8
4.	4	C40034170	U-BOLT ASSEMBLY, 1/2 ϕ X 5 1/16 C-C	4
TOTAL WEIGHT				66

- * EACH THREADED ROD ASSEMBLY COMES WITH
(2) NUTS, (2) LOCKWASHERS & (2) FLATWASHERS



Distributed By
Rosenberger
Rosenberger Site Solutions, LLC
visit www.RosenbergerOnline.us

THIS MOUNT FITS:
ROUNDS UP 2 3/8" TO 4 1/2" O.D.

UNLESS OTHERWISE SPECIFIED ALL DIMENSIONS INCLUDE FINISHES AND ARE IN INCHES TOLERANCES: FRACTIONS $\pm 1/16"$ ANGLES $\pm 1/2$ DEG. DECIMALS $\pm .010"$		MATERIAL: TOLERANCES DO NOT APPLY TO RAW MATERIAL		Sabre Industries™ Towers and Poles		TOWER FACE MOUNT STANDOFF BRACKET (FMSOB-14)								
CONFIDENTIAL This document and the information contained herein is the confidential trade secret property of Sabre Communications Corporation ("Sabre") and must not be reproduced, copied or used, in whole or in part, for any purpose without the prior written consent of Sabre. © 2015 Sabre Communications Corporation. All rights reserved.						DATE		03/16/15	SIZE	B	DRAWING NO.	C10153434	REV	0
						DRAWN BY		WRF	CHECKED BY		KLE	SCALE	None	PAGE
REV	DATE	DRW	CHK	DESCRIPTION										