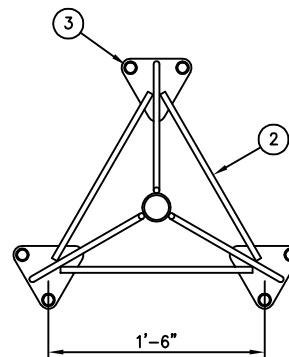


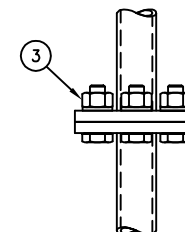
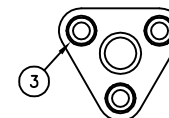
ELEVATION VIEW

NOTES:

1. THE PART NUMBER OF THE TOWER SECTION IS LOCATED AT THE TOP OF EACH SECTION.
2. IT IS IMPORTANT TO ALIGN THESE PART NUMBERS ON THE SAME LEG FOR THE ENTIRE HEIGHT OF THE TOWER.



PLAN VIEW



**SECTION BASE
SPLICE DETAIL**

C30904048 TAPERED TOP SECTION (MODEL 1800 TLWD)

ITEM	QTY.	PART NO.	DESCRIPTION	WEIGHT
1.	1	T1800010	7'-3 TOWER SECTION (MODEL 1800 TLWD)	103.0#
2.	1	CW00213	WELDMENT, TAPERED TOP STUB	27.6#
3.	15	C40026005	BOLT ASSEMBLY, 1/2"Ø X 2 A325	3.6#
TOTAL WEIGHT				134.2#

UNLESS OTHERWISE SPECIFIED ALL DIMENSIONS INCLUDE FINISHES AND ARE IN INCHES		MATERIAL:	
TOLERANCES: FRACTIONS ± 1/16" ANGLES ± 1/2 DEG. DECIMALS ± .010"		TOLERANCES DO NOT APPLY TO RAW MATERIAL	
REV	DATE	DRW/CHK	DESCRIPTION
1	03/30/07	ESB/SP	ADDED NOTES.



CONFIDENTIAL
This document and the information contained herein is the confidential trade secret property of Sabre Communications Corporation ("Sabre") and must not be reproduced, copied or used, in whole or in part, for any purpose without the prior written consent of Sabre.
© 2006 Sabre Communications Corporation. All rights reserved.

**10 FT TAPERED TOP TOWER SECTION
(1.660" O.D. LEG - 1/2"Ø BRACING)
MODEL 1800 TLWD**

DATE	04/07/04	SIZE	B	DRAWING NO.	C30904048	REV	1
DRAWN BY	WRF			SCALE	None	PAGE	1 OF 1
CHECKED BY	RWM						