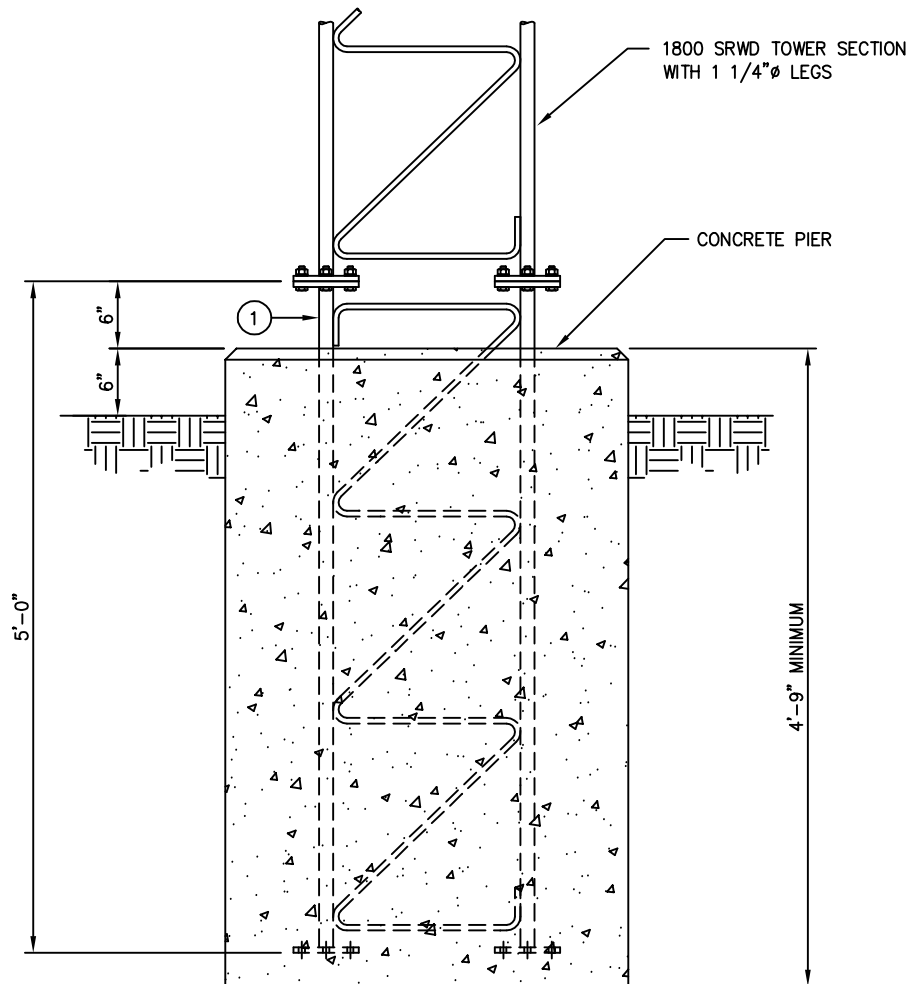
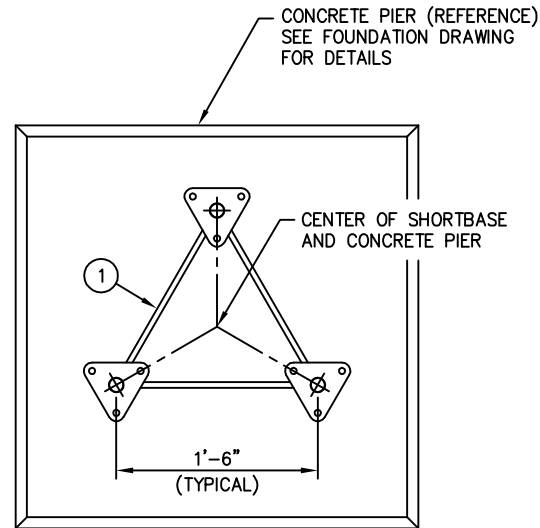


C30904851 SHORTBASE FOR MODEL 1800 SRWD WITH 1 1/4"Ø LEGS

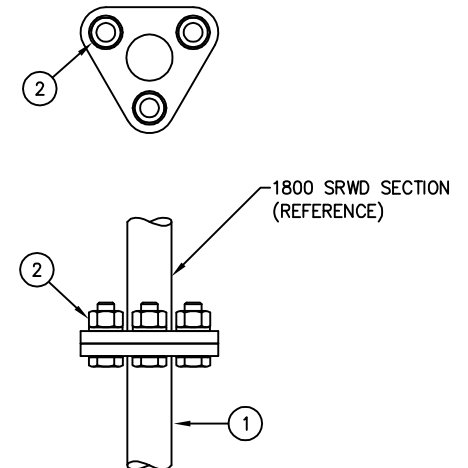
ITEM	QTY.	PART NO.	DESCRIPTION	WEIGHT
1.	1	T1800006	5 FT. SHORTBASE SECTION (1 1/4"Ø LEGS)	105.1#
2.	9	C40026005	BOLT ASSEMBLY, 1/2 X 2 A325	2.2#
TOTAL WEIGHT				107.3#



ELEVATION VIEW



PLAN VIEW



SPLICE DETAIL

UNLESS OTHERWISE SPECIFIED
ALL DIMENSIONS INCLUDE
FINISHES AND ARE IN INCHES

TOLERANCES: FRACTIONS $\pm 1/16"$
ANGLES $\pm 1/2$ DEG.
DECIMALS $\pm .010"$

MATERIAL:

TOLERANCES DO NOT APPLY
TO RAW MATERIAL



CONFIDENTIAL

This document and the information contained herein is the confidential trade secret property of Sabre Communications Corporation ("Sabre") and must not be reproduced, copied or used, in whole or in part, for any purpose without the prior written consent of Sabre.
© 2006 Sabre Communications Corporation. All rights reserved.

SHORTBASE INSTALLATION DETAIL FOR MODEL 1800 SRWD TOWER (1 1/4"Ø LEGS)

REV	DATE	DRW	CHK	DESCRIPTION

DATE	3/8/04	SIZE	B	DRAWING NO.	C30904851	REV	0
DRAWN BY	WRF	CHECKED BY	DLW	SCALE	None	PAGE	1 OF 1