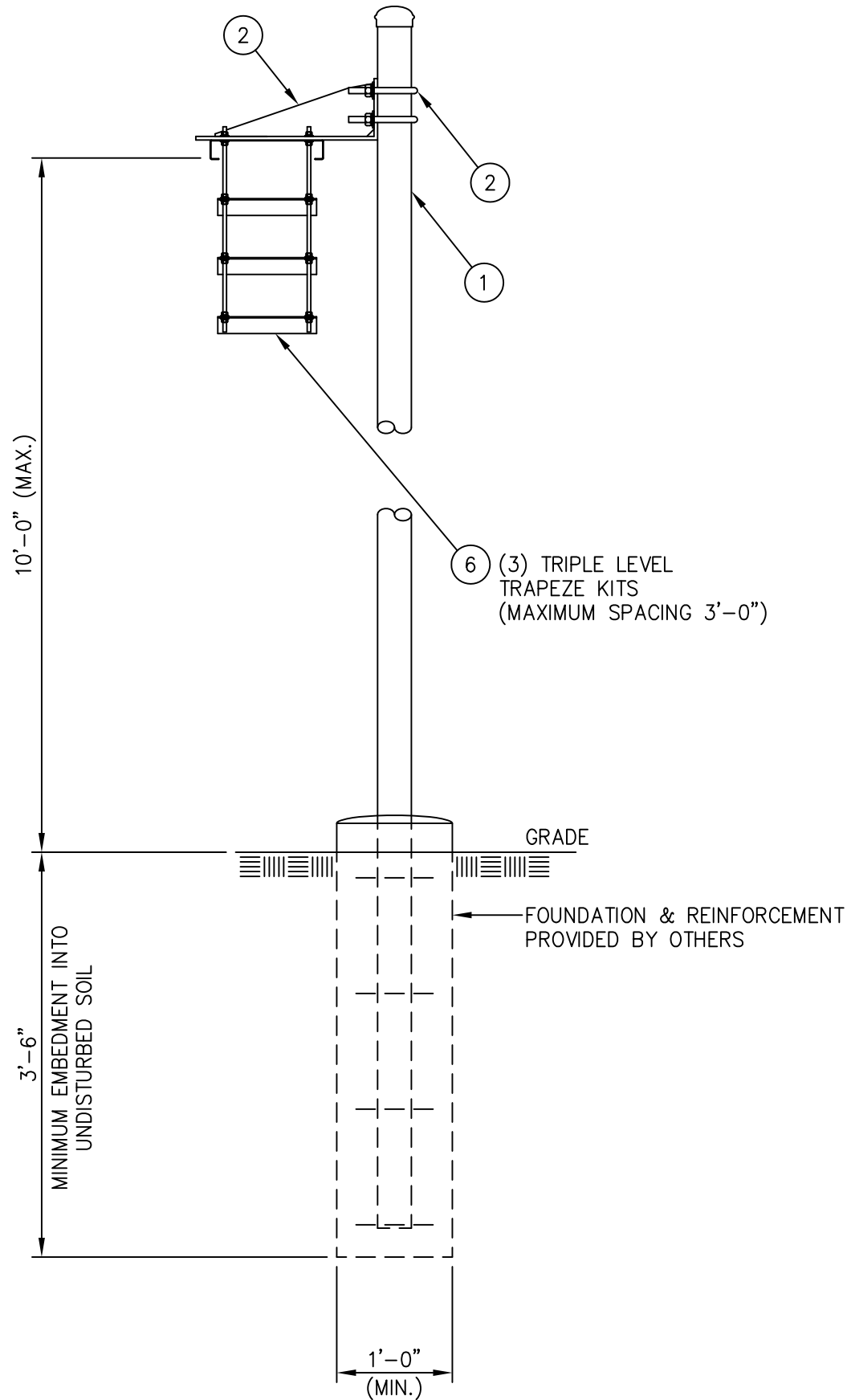


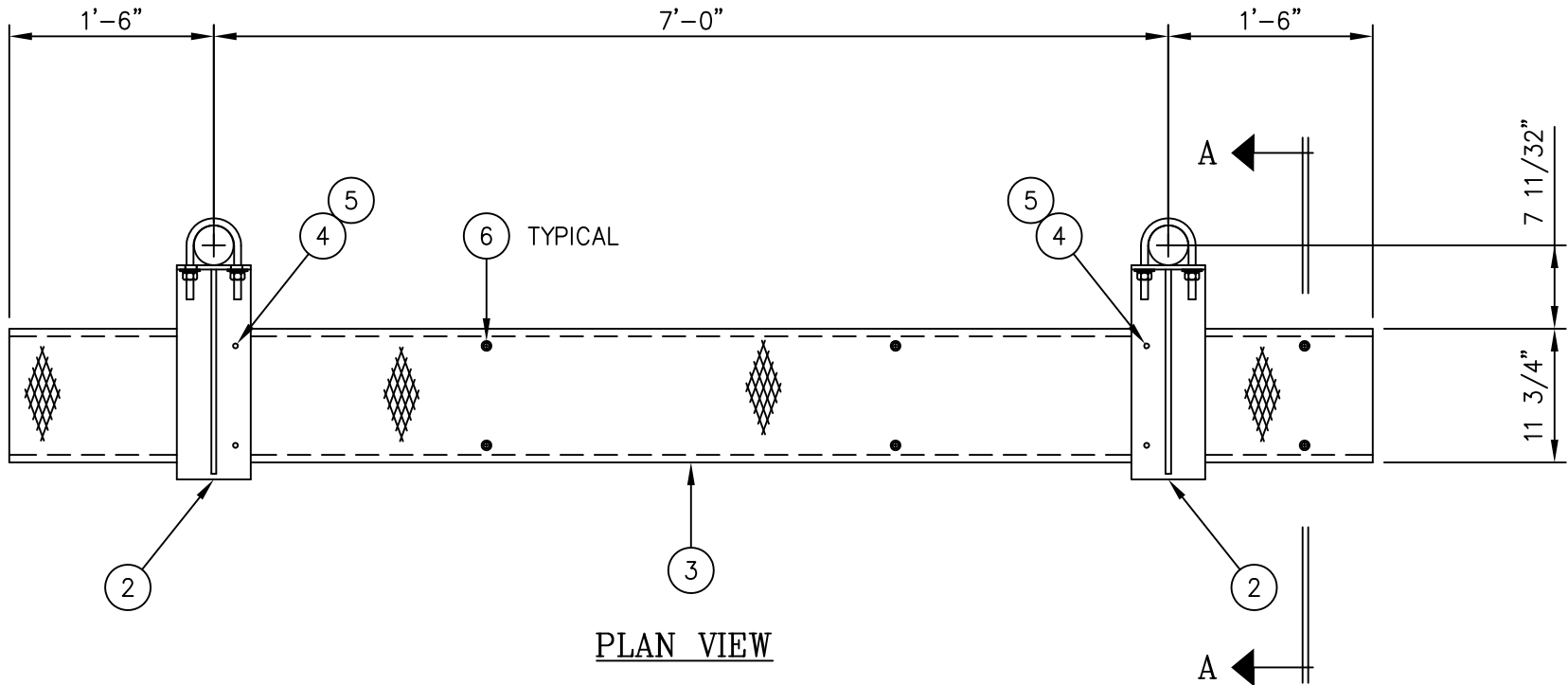


Distributed By
Rosenberger
Rosenberger Site Solutions, LLC
visit www.RosenbergerOnline.us

C20135060 GRIP STRUT WAVEGUIDE BRIDGE KIT				
ITEM	QTY.	PART. NO.	DESCRIPTION	WEIGHT
1.	2	C20138004	PIPE, WAVEGUIDE BRIDGE POST W/PIPE CAP	197.0#
2.	2	C20140010	WAVEGUIDE BRIDGE SUPPORT ARM W/U-BOLTS	20.8#
3.	1	C20137001	GRIP STRUT WAVEGUIDE BRIDGE, 11 3/4" X 10'-0	44.0#
4.	4	C40012017	STAINLESS STEEL BOLT ASSY, 3/8 X 2	0.4#
5.	8	C40046001	FENDER WASHER, 7/16 I.D. X 1 1/2 O.D.	0.4#
6.	3	C20145005	TRIPLE LEVEL TRAPEZE KIT	24.0#
TOTAL WEIGHT				286.6#




SECTION A-A



PLAN VIEW

NOTE:

THIS WAVEGUIDE BRIDGE ASSEMBLY IS NOT DESIGNED TO SUPPORT PERSONNEL OR EQUIPMENT.

UNLESS OTHERWISE SPECIFIED ALL DIMENSIONS INCLUDE FINISHES AND ARE IN INCHES				MATERIAL:			GRIP STRUT WAVEGUIDE BRIDGE WITH 15'-4" PIPE COLUMNS (11 3/4" WIDE X 10'-0") TRIPLE LEVEL TRAPEZE				
TOLERANCES: FRACTIONS ± 1/16" ANGLES ± 1/2 DEG. DECIMALS ± .010"				TOLERANCES DO NOT APPLY TO RAW MATERIAL							
						<p align="center">CONFIDENTIAL</p> <p>This document and the information contained herein is the confidential trade secret property of Sabre Communications Corporation ("Sabre") and must not be reproduced, copied or used, in whole or in part, for any purpose without the prior written consent of Sabre.</p> <p>© 2014 Sabre Communications Corporation. All rights reserved.</p>			SIZE B	DRAWING NO. C20135060	REV 1
							DATE 4/8/03				
							DRAWN BY CE			SCALE None	PAGE 1 OF 1
							CHECKED BY PSB				
1	1/14/09	MLC	MC	REVISED WEIGHT OF ITEM 1							
REV	DATE	DRW	CHK	DESCRIPTION							