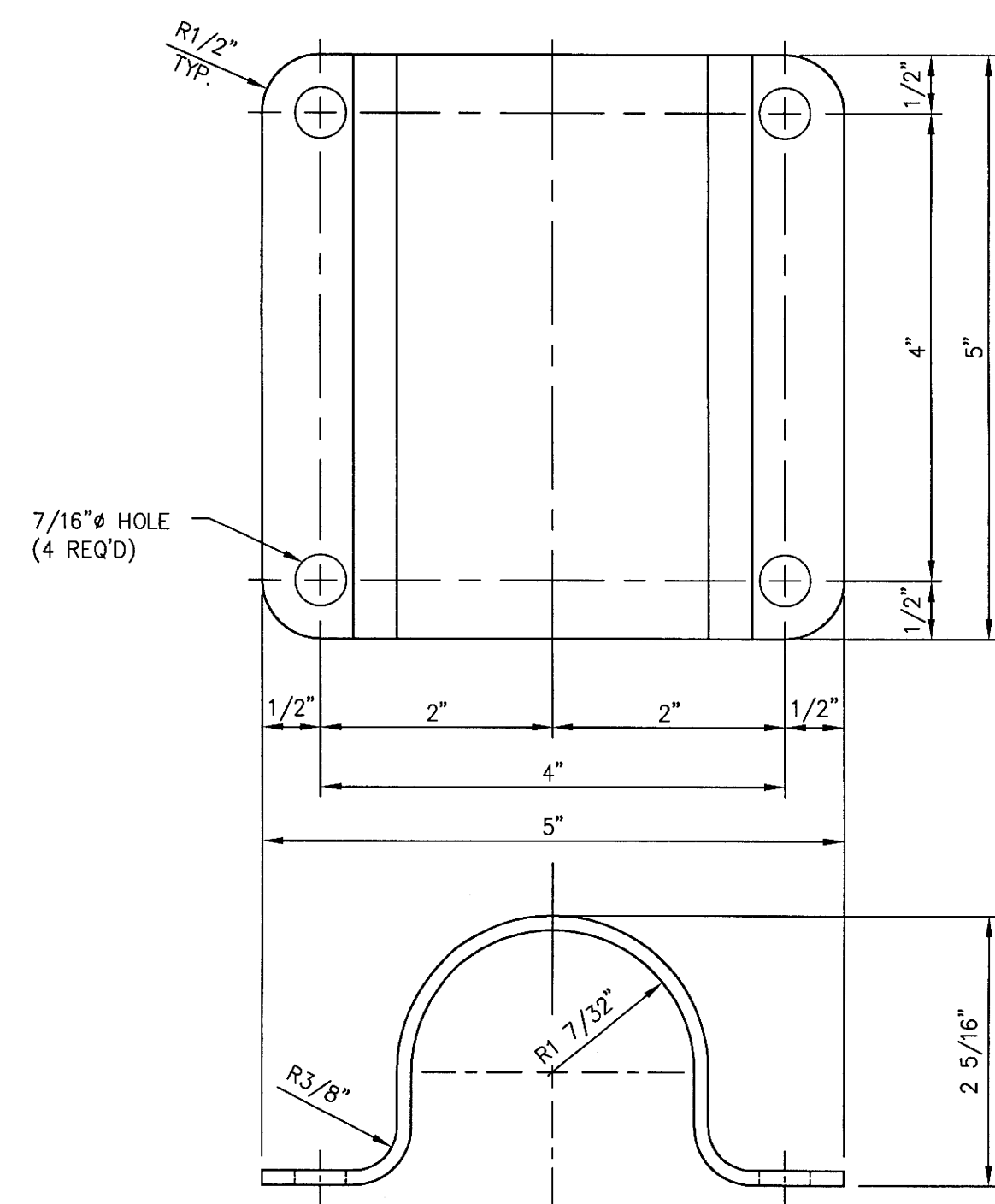
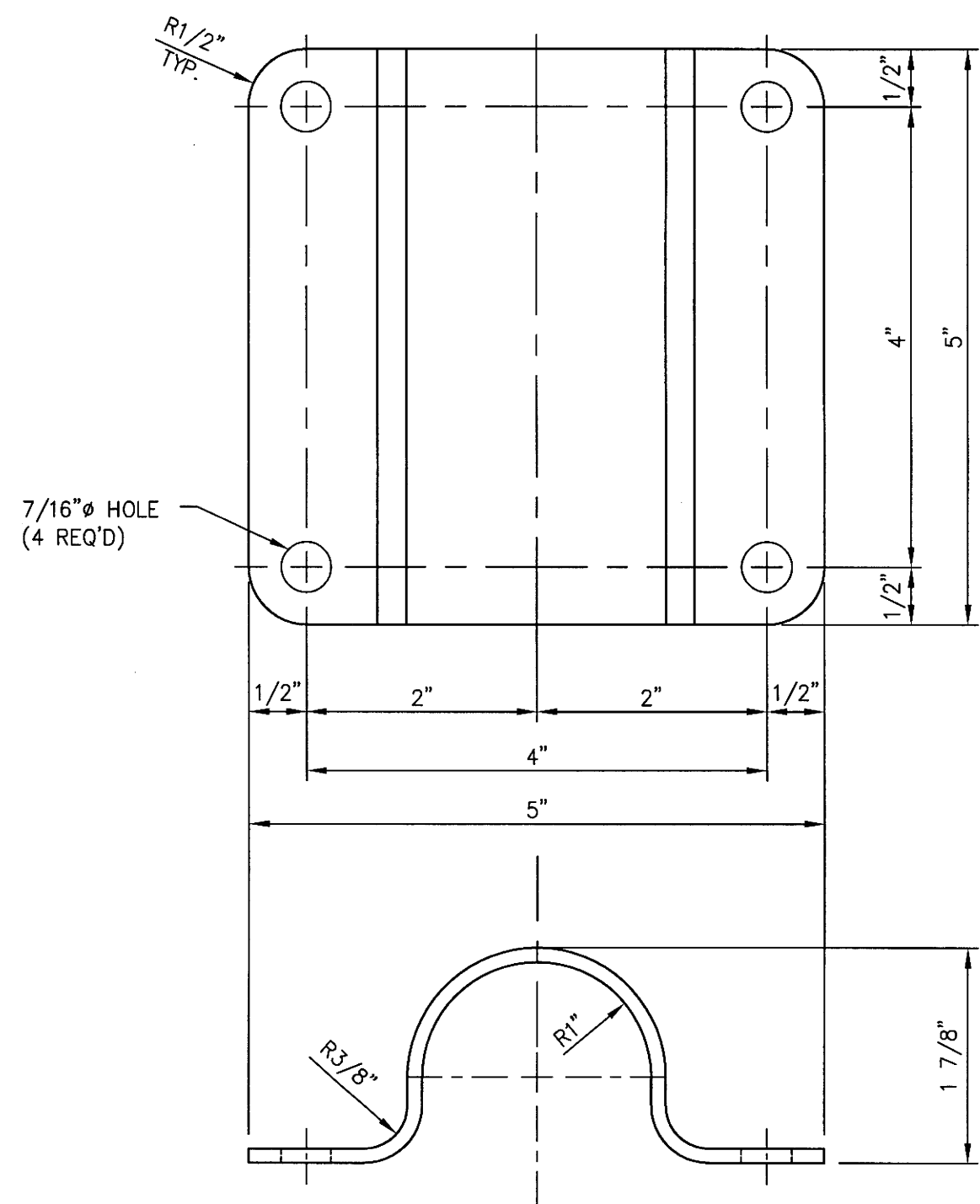


Distributed By
Rosenberger
Rosenberger Site Solutions, LLC
visit www.RosenbergerOnline.us



Distributed By
Rosenberger
Rosenberger Site Solutions, LLC
visit www.RosenbergerOnline.us

UNLESS OTHERWISE SPECIFIED
ALL DIMENSIONS INCLUDE
FINISHES AND ARE IN INCHES
TOLERANCES: FRACTIONS $\pm 1/16"$
ANGLES $\pm 1/2$ DEG.
DECIMALS $\pm .010"$

MATERIAL: PURCHASED ITEM
9 GA. STEEL
ASTM A36 OR EQUAL
TOLERANCES DO NOT APPLY
TO RAW MATERIAL



CONFIDENTIAL
This document and the information
contained herein is the confidential trade
secret property of Sabre Communications
Corporation ("Sabre") and must not be
reproduced, copied or used, in whole or in
part, for any purpose without the prior
written consent of Sabre.
© 2008 Sabre Communications Corporation.
All rights reserved.

CROSSOVER CLAMP W/HARDWARE
(1.90" ϕ - 2 3/8" ϕ PIPE)

REV	DATE	DRW/CHK	DESCRIPTION
1	5/27/14	KLE/DLW	ADDED MATERIAL GRADE ASTM A36 OR EQUAL

		SIZE B	DRAWING NO. C40204100		REV 1
DATE	5/27/08				
DRAWN BY	MLC		SCALE None	PAGE 2 OF 2	
CHECKED BY	MC				