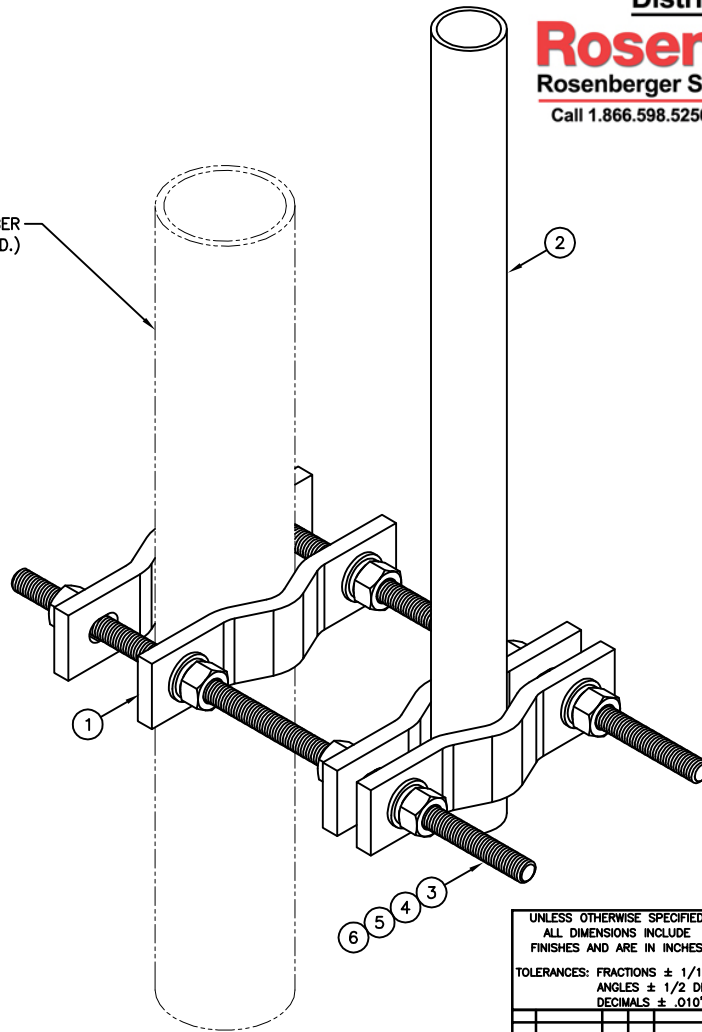


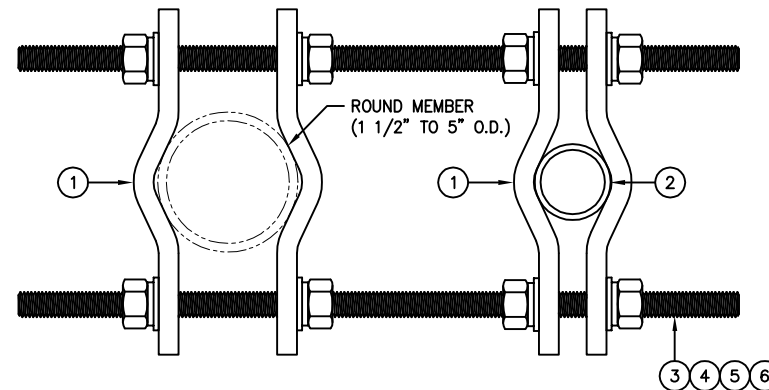
Distributed By  
**Rosenberger**  
 Rosenberger Site Solutions, LLC  
 Call 1.866.598.5250 or visit [www.RLSS.us](http://www.RLSS.us)

ROUND MEMBER  
 (1 1/2" TO 5" O.D.)



ISOMETRIC VIEW

C10158001 GPS MOUNT					
ITEM	QTY.	PART NO.	DESCRIPTION	WEIGHT	
1.	4	CS00144	2 HOLE PIPE ADAPTER CLAMP 1 1/2" TO 5" O.D.	10	
2.	1	CS00044	PIPE, 1.9" O.D. X 0.145 X 2'-0	6	
3.	2	C40099003	THR'D ROD ASS'Y. 5/8 Ø X 1'-6" ASTM A193 GR B7	4	
4.	4	C40042007	NUT, 5/8" A194 GRADE 2H	1	
5.	4	C40030012	LOCKWASHER, 5/8 Ø	1	
6.	4	C40031003	FLATWASHER, 5/8 Ø HARDENED ASTM F436	1	
TOTAL WEIGHT				23	



PLAN VIEW

UNLESS OTHERWISE SPECIFIED ALL DIMENSIONS INCLUDE FINISHES AND ARE IN INCHES		MATERIAL:	
TOLERANCES: FRACTIONS ± 1/16" ANGLES ± 1/2 DEG. DECIMALS ± .010"		TOLERANCES DO NOT APPLY TO RAW MATERIAL	
REV	DATE	DRW/CHK	DESCRIPTION
2	07/08/08	WRF/WMN	ADDED ISOMETRIC VIEW
1	01/12/05	RWM/MJR	REVISED ITEM #2 - WAS CS00505



**CONFIDENTIAL**  
 This document and the information  
 contained herein is the confidential trade  
 secret property of Sabre Communications  
 Corporation ("Sabre") and must not be  
 reproduced, copied or used, in whole or in  
 part, for any purpose without the prior  
 written consent of Sabre.  
 © 2006 Sabre Communications Corporation.  
 All rights reserved.

GPS MOUNT  
 (FITS 1 1/2" TO 5" O.D.)

DATE		SIZE	DRAWING NO.	REV
07/01/03		B	C10158001	2
DRAWN BY		SCALE		PAGE
KLE		None		1 OF 1
CHECKED BY				
DLW				