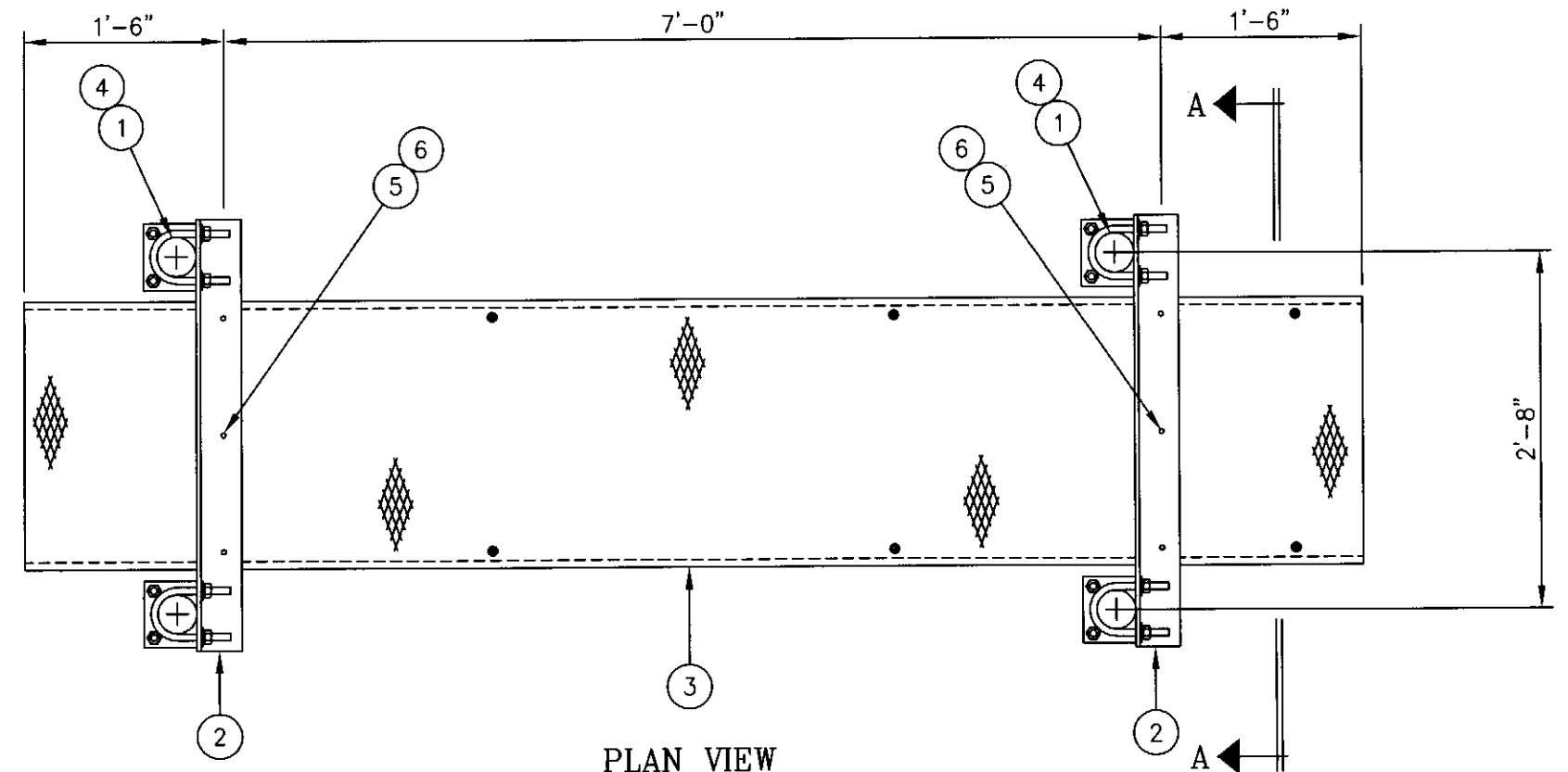
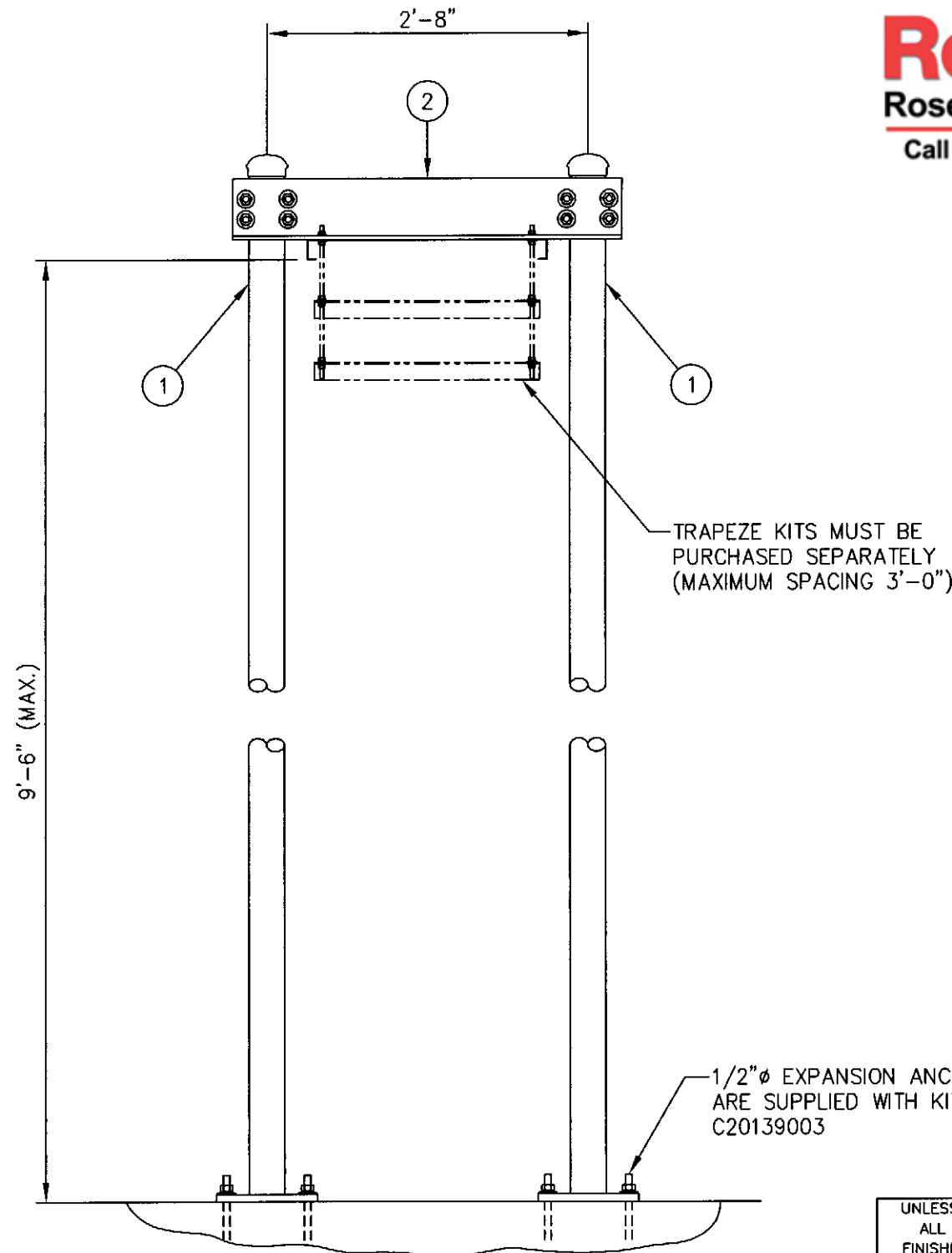


Distributed By
Rosenberger
 Rosenberger Site Solutions, LLC
 Call 1.866.598.5250 or visit www.RLSS.us

C20136022 GRIP STRUT WAVEGUIDE BRIDGE KIT

ITEM	QTY.	PART. NO.	DESCRIPTION	WEIGHT
1.	4	C20139003	WAVEGUIDE BRIDGE POST W/PIPE CAP & ANCHORS	357.6#
2.	2	CS00053	WAVEGUIDE BRIDGE SUPPORT ANGLE	82.6#
3.	1	C20137002	GRIP STRUT WAVEGUIDE BRIDGE, 24" X 10'-0	74.0#
4.	8	C40034028	U-BOLT ASSEMBLY, 5/8" X 4 3/16" C/C	15.4#
5.	6	C40012017	STAINLESS STEEL BOLT ASSY, 3/8 X 2	0.6#
6.	12	C40046001	FENDER WASHER, 7/16 I.D. X 1 1/2 O.D.	0.6#
TOTAL WEIGHT				530.8#



PLAN VIEW

NOTE:

THIS WAVEGUIDE BRIDGE ASSEMBLY IS NOT DESIGNED TO SUPPORT PERSONNEL OR EQUIPMENT.

SECTION A-A

UNLESS OTHERWISE SPECIFIED
 ALL DIMENSIONS INCLUDE
 FINISHES AND ARE IN INCHES
 TOLERANCES: FRACTIONS $\pm 1/16"$
 ANGLES $\pm 1/2$ DEG.
 DECIMALS $\pm .010"$

MATERIAL:
 TOLERANCES DO NOT APPLY
 TO RAW MATERIAL



CONFIDENTIAL
 Information contained herein is the sole property of Sabre Communications Corporation, constitutes a trade secret as defined by Iowa Code Ch. 550 and shall not be reproduced, copied or used in whole or in part for any purpose whatsoever without prior written consent of Sabre Communications Corporation.

**GRIP STRUT WAVEGUIDE BRIDGE
 WITH 10'-6" BASE PLATE COLUMNS
 (24" WIDE X 10'-0")
 NO TRAPEZE**

REV	DATE	DRW	CHK	DESCRIPTION

		SIZE	DRAWING NO.		REV
DATE	6/10/03	B	C20136022		0
DRAWN BY	KLE			SCALE	PAGE
CHECKED BY	PSB ✓			None	1 OF 1