

ISOMETRIC VIEW  
SHOWING SINGLE BOOM  
(TYPICAL 3 PLACES)

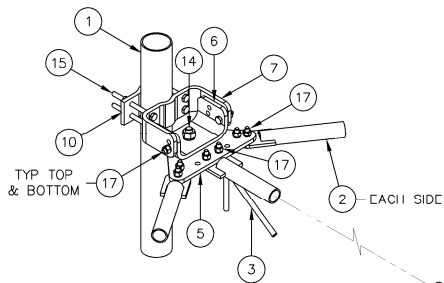
[illegible]

**Sabre Industries™**  
INNOVATION DELIVERED

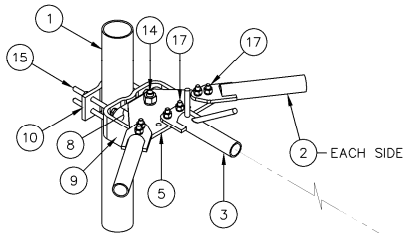
**CONFIDENTIAL**  
This document and the information contained herein is the confidential trade secret property of Sabre Industries, Inc. ("Sabre") and must not be reproduced, copied or used, in whole or in part, for any purpose without the prior written consent of Sabre.  
© 2021 Sabre Industries, Inc. All rights reserved.

DUAL SECTOR V-BOOMS  
W/POLE PIPE MOUNT ASSEMBLY  
(10" TO 40" DIA. POLES)

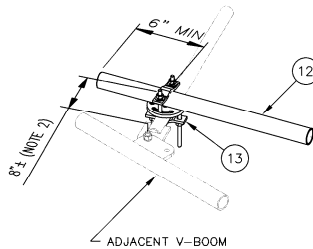
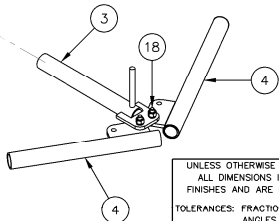
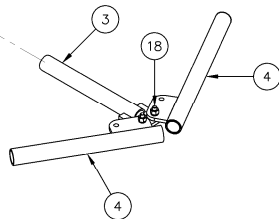
|            |          |           |             |       |        |
|------------|----------|-----------|-------------|-------|--------|
|            |          | SIZE<br>B | DRAWING NO. |       | REV    |
| DATE       | 08/18/21 |           | C10850006   |       | 0      |
| DRAWN BY   |          |           | WRF         | SCALE | PAGE   |
| CHECKED BY | EK       |           |             | None  | 2 OF 4 |



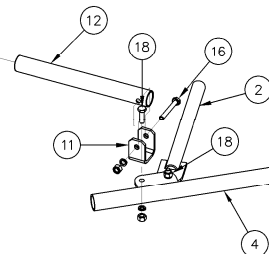
UPPER LEG MOUNTING DETAIL



LOWER LEG MOUNTING DETAIL



TIE BACK DETAIL  
(ONE END EXPLODED)



UNLESS OTHERWISE SPECIFIED  
ALL DIMENSIONS INCLUDE  
FINISHES AND ARE IN INCHES  
TOLERANCES: FRACTIONS  $\pm 1/16$ "  
ANGLES  $\pm 1/2$  DEG.  
DECIMALS  $\pm .010$ "

MATERIAL:  
TOLERANCES DO NOT APPLY  
TO RAW MATERIAL

**Sabre Industries**  
INNOVATION DELIVERED

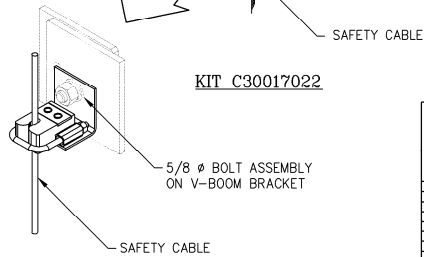
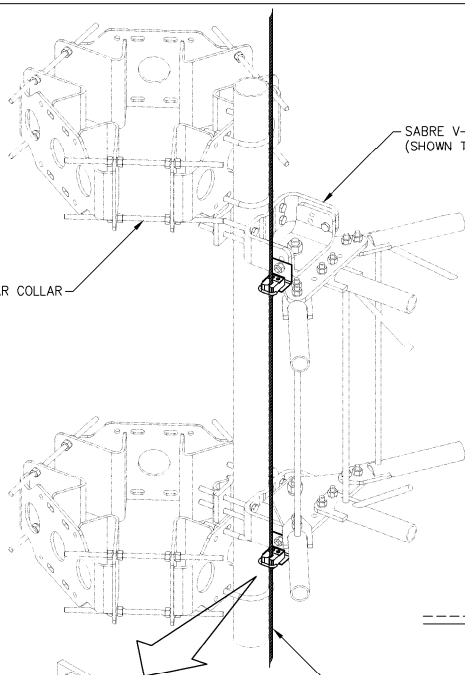
CONFIDENTIAL

This document and the information  
contained herein is the confidential trade  
secret property of Sabre Industries, Inc.  
("Sabre") and must not be reproduced,  
copied or used, in whole or in part, for  
any purpose without the prior written  
consent of Sabre.  
© 2021 Sabre Industries, Inc. All rights  
reserved.

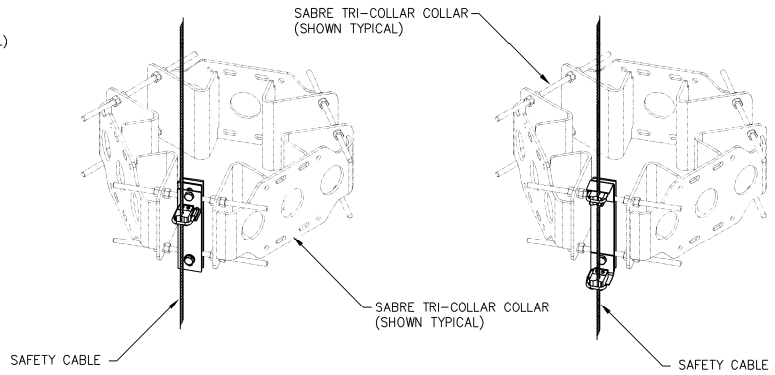
DUAL SECTOR V-BOOMS  
W/POLE PIPE MOUNT ASSEMBLY  
(10" TO 40" DIA. POLES)

| REV | DATE | DRW | CHK | DESCRIPTION |
|-----|------|-----|-----|-------------|
|     |      |     |     |             |
|     |      |     |     |             |
|     |      |     |     |             |
|     |      |     |     |             |
|     |      |     |     |             |
|     |      |     |     |             |
|     |      |     |     |             |
|     |      |     |     |             |
|     |      |     |     |             |
|     |      |     |     |             |

| DATE       | 08/18/21 | SIZE  | B | DRAWING NO. | C10850006 | REV         | 0 |
|------------|----------|-------|---|-------------|-----------|-------------|---|
| DRAWN BY   | WRF      | SCALE |   | None        |           | PAGE 3 OF 4 |   |
| CHECKED BY | EK       |       |   |             |           |             |   |



KIT C30017022




KIT C30017031

KIT C30017032

-----OPTIONAL CABLE GUIDE MOUNTING OPTIONS -----

**OPTIONAL LOCKING CABLE GUIDE**  
IF REQUIRED PLEASE ORDER THE APPROPRIATE KIT BELOW TO FIT YOUR INDIVIDUAL FIELD NEEDS.

**NOTE**  
OTHER ADDITIONAL CABLE GUIDE SUPPORTS MAY BE REQUIRED ABOVE AND BELOW V-BOOM SO THAT CABLE ALIGNMENT IS WITHIN REQUIRED LIMITS.

|  |  |  |   |  |     |      |   |  |             |  |           |  |        |   |  |
|--|--|--|---|--|-----|------|---|--|-------------|--|-----------|--|--------|---|--|
| UNLESS OTHERWISE SPECIFIED<br>ALL DIMENSIONS INCLUDE<br>FINISHES AND ARE IN INCHES<br>TOLERANCES: FRACTIONS $\pm 1/16"$<br>ANGLES $\pm 1/2$ DEG.<br>DECIMALS $\pm .010"$ |  | MATERIAL:                                  | <br><b>Sabre Industries</b><br>INNOVATION DELIVERED   | DUAL SECTOR V-BOOMS<br>W/POLE PIPE MOUNT ASSEMBLY<br>(10" TO 40" DIA. POLES) |     |      |   |  |             |  |           |  |        |   |  |
|  |  | TOLERANCES DO NOT APPLY<br>TO RAW MATERIAL |   |  |     |      |   |  |             |  |           |  |        |   |  |
|  |  |  | CONFIDENTIAL<br>This document and the information contained herein is the confidential trade secret property of Sabre Industries, Inc. ("Sabre") and must not be reproduced, copied or used, in whole or in part, for any purpose without the prior written consent of Sabre.<br>© 2021 Sabre Industries, Inc. All rights reserved. |  |     |      |   |  |             |  |           |  |        |   |  |
|  |  |  | DATE  | 08/18/21   |     | SIZE | B |  | DRAWING NO. |  | C10850006 |  | REV    | 0 |  |
|  |  |  | DRAWN BY  |  | WRF |      |   |  |             |  | SCALE     |  | PAGE   |   |  |
| REV    DATE    DRW/CHK    DESCRIPTION  |  |  | CHECKED BY  |  | EK  |      |   |  |             |  | None      |  | 4 OF 4 |   |  |