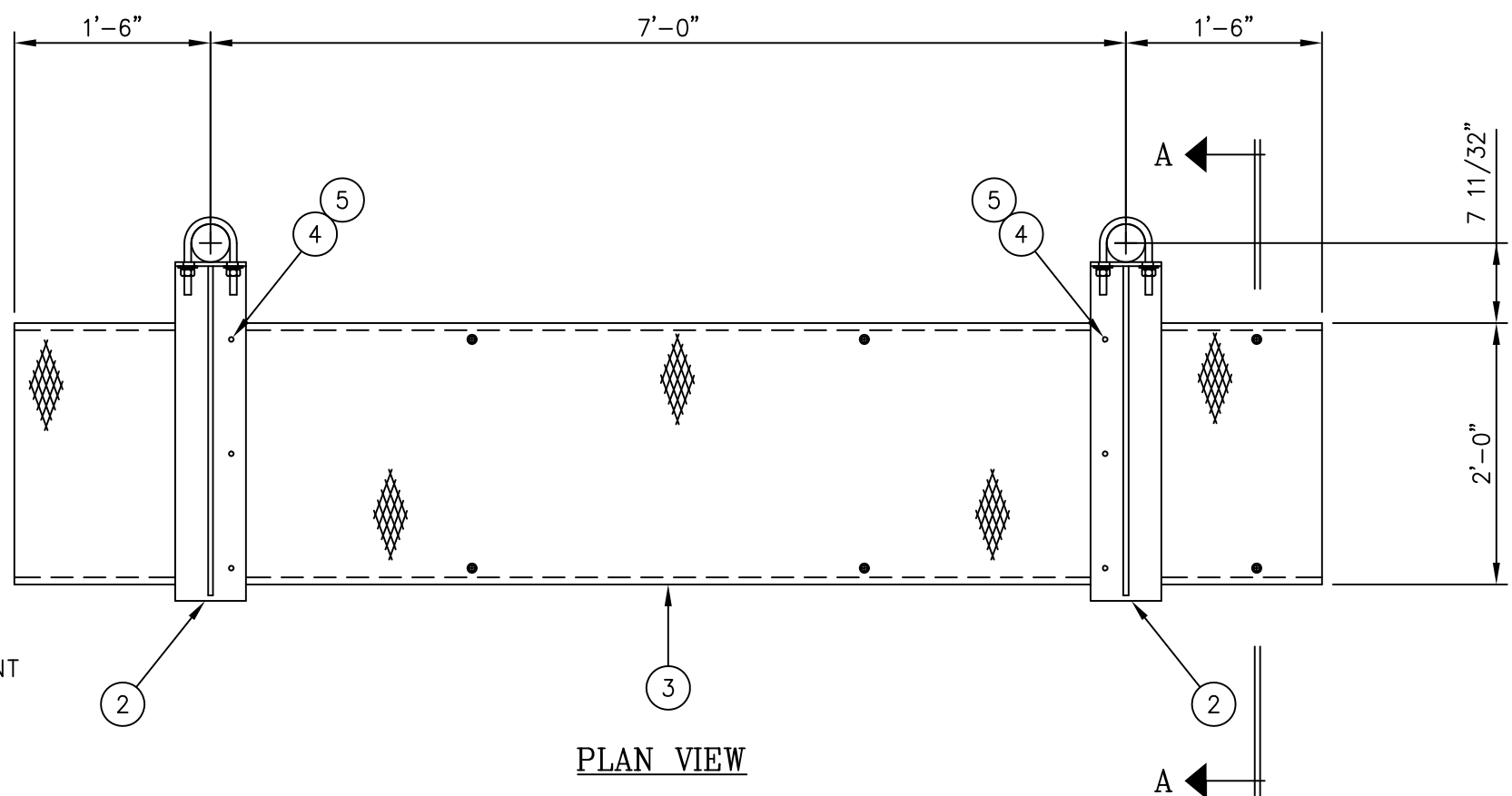
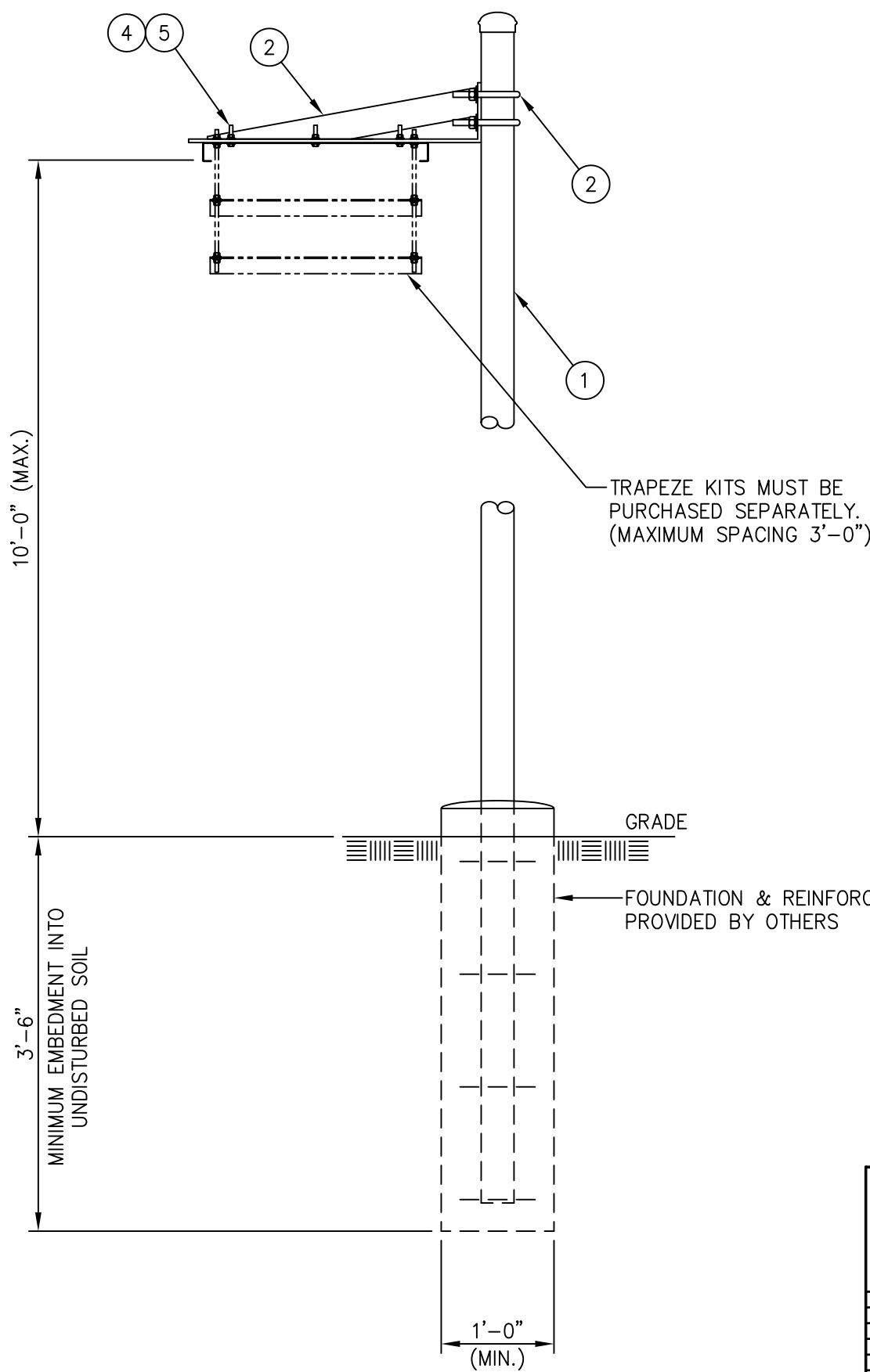





Distributed By  
**Rosenberger**  
Rosenberger Site Solutions, LLC  
visit [www.RosenbergerOnline.us](http://www.RosenbergerOnline.us)

C20135052 GRIP STRUT WAVEGUIDE BRIDGE KIT				
ITEM	QTY.	PART. NO.	DESCRIPTION	WEIGHT
1.	2	C20138004	PIPE, WAVEGUIDE BRIDGE POST W/PIPE CAP	197.0#
2.	2	C20140011	WAVEGUIDE BRIDGE SUPPORT ARM W/U-BOLTS	33.8#
3.	1	C20137002	GRIP STRUT WAVEGUIDE BRIDGE, 24" X 10'-0	74.0#
4.	6	C40012017	STAINLESS STEEL BOLT ASSY, 3/8 X 2	0.6#
5.	12	C40046001	FENDER WASHER, 7/16 I.D. X 1 1/2 O.D.	0.6#
TOTAL WEIGHT				306.0#



**NOTE:**  
THIS WAVEGUIDE BRIDGE ASSEMBLY IS NOT DESIGNED TO SUPPORT PERSONNEL OR EQUIPMENT.

SECTION A-A



**Sabre**  
Communications  
Corporation™

**CONFIDENTIAL**

This document and the information contained herein is the confidential trade secret property of Sabre Communications Corporation ("Sabre") and must not be reproduced, copied or used, in whole or in part, for any purpose without the prior written consent of Sabre.

© 2007 Sabre Communications Corporation. All rights reserved.

UNLESS OTHERWISE SPECIFIED ALL DIMENSIONS INCLUDE FINISHES AND ARE IN INCHES				MATERIAL:	
TOLERANCES: FRACTIONS ± 1/16"				TOLERANCES DO NOT APPLY TO RAW MATERIAL	
ANGLES ± 1/2 DEG.					
DECIMALS ± .010"					
2	1/14/09	MLC	MC	REVISED WEIGHT OF ITEM 1	
1	4/9/03	CE	PSB	UPDATED DWG & MOVED MAT'L LIST	
REV	DATE	DRW	CHK	DESCRIPTION	

GRIP STRUT WAVEGUIDE BRIDGE WITH 15'-4" PIPE COLUMNS (24" WIDE X 10'-0") NO TRAPEZE					
		SIZE	DRAWING NO.		REV
DATE	8/19/02	B	C20135052		2
DRAWN BY	CHH			SCALE	PAGE
CHECKED BY	RSL			None	1 OF 1