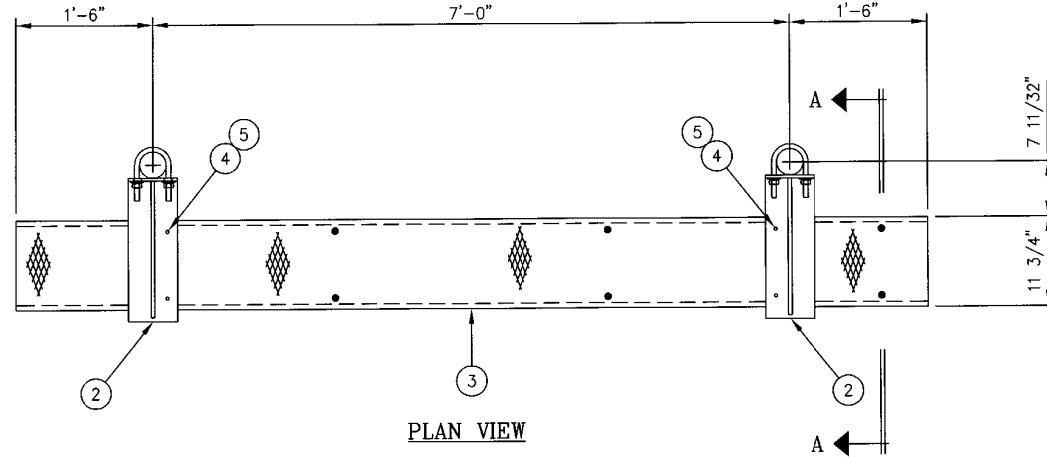



Distributed By
Rosenberger
 Rosenberger Site Solutions, LLC
 Call 1.866.598.5250 or visit www.RLSS.us

C20135026 GRIP STRUT WAVEGUIDE BRIDGE KIT				
ITEM	QTY.	PART. NO.	DESCRIPTION	WEIGHT
1.	2	C20138003	PIPE, WAVEGUIDE BRIDGE POST W/PIPE CAP	211.2#
2.	2	C20140010	WAVEGUIDE BRIDGE SUPPORT ARM W/U-BOLTS	20.8#
3.	1	C20137001	GRIP STRUT WAVEGUIDE BRIDGE, 11 3/4" X 10'-0"	44.0#
4.	4	C40012017	STAINLESS STEEL BOLT ASSY, 3/8 X 2	0.4#
5.	8	C40046001	FENDER WASHER, 7/16 I.D. X 1 1/2 O.D.	0.4#
TOTAL WEIGHT				276.8#



NOTE:

THIS WAVEGUIDE BRIDGE ASSEMBLY IS NOT DESIGNED TO SUPPORT PERSONNEL OR EQUIPMENT.

UNLESS OTHERWISE SPECIFIED ALL DIMENSIONS INCLUDE FINISHES AND ARE IN INCHES				MATERIAL:			GRIP STRUT WAVEGUIDE BRIDGE WITH 13'-4" PIPE COLUMNS (11 3/4" WIDE X 10'-0") NO TRAPEZE				
TOLERANCES: FRACTIONS ± 1/16" ANGLES ± 1/2 DEG. DECIMALS ± .010"				TOLERANCES DO NOT APPLY TO RAW MATERIAL							
						<p>CONFIDENTIAL</p> <p>Information contained herein is the sole property of Sabre Communications Corporation, constitutes a trade secret as defined by Iowa Code Ch. 550 and shall not be reproduced, copied or used in whole or in part for any purpose whatsoever without prior written consent of Sabre Communications Corporation.</p>			SIZE	DRAWING NO.	REV
							DATE	4/8/03	B	C20135026	0
							DRAWN BY	CE			
							CHECKED BY	PSB ✓		SCALE	PAGE
										None	1 OF 1
REV	DATE	DRW	CHK	DESCRIPTION							